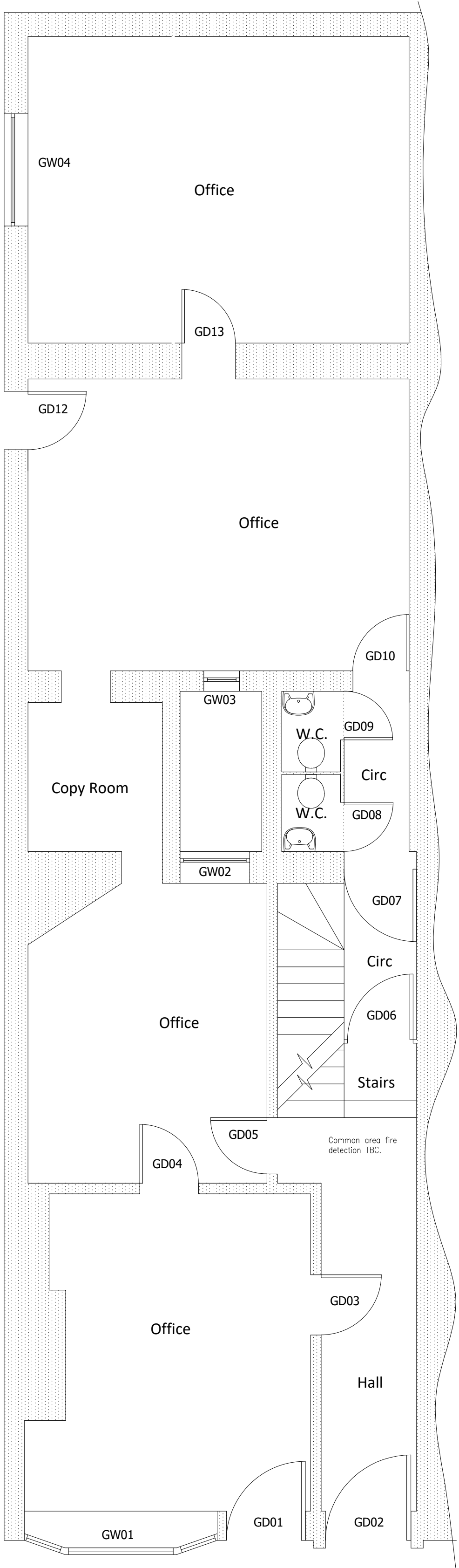
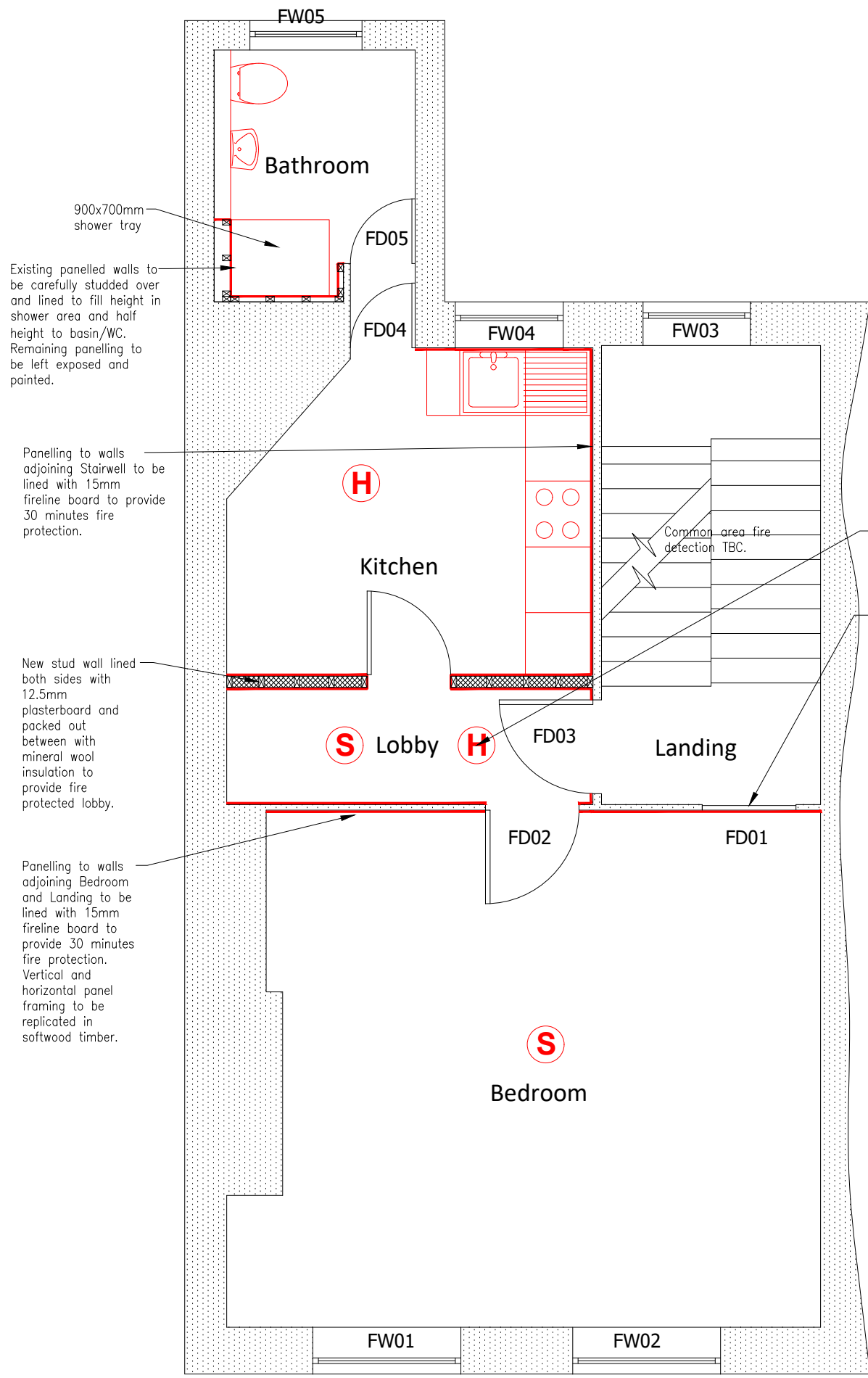


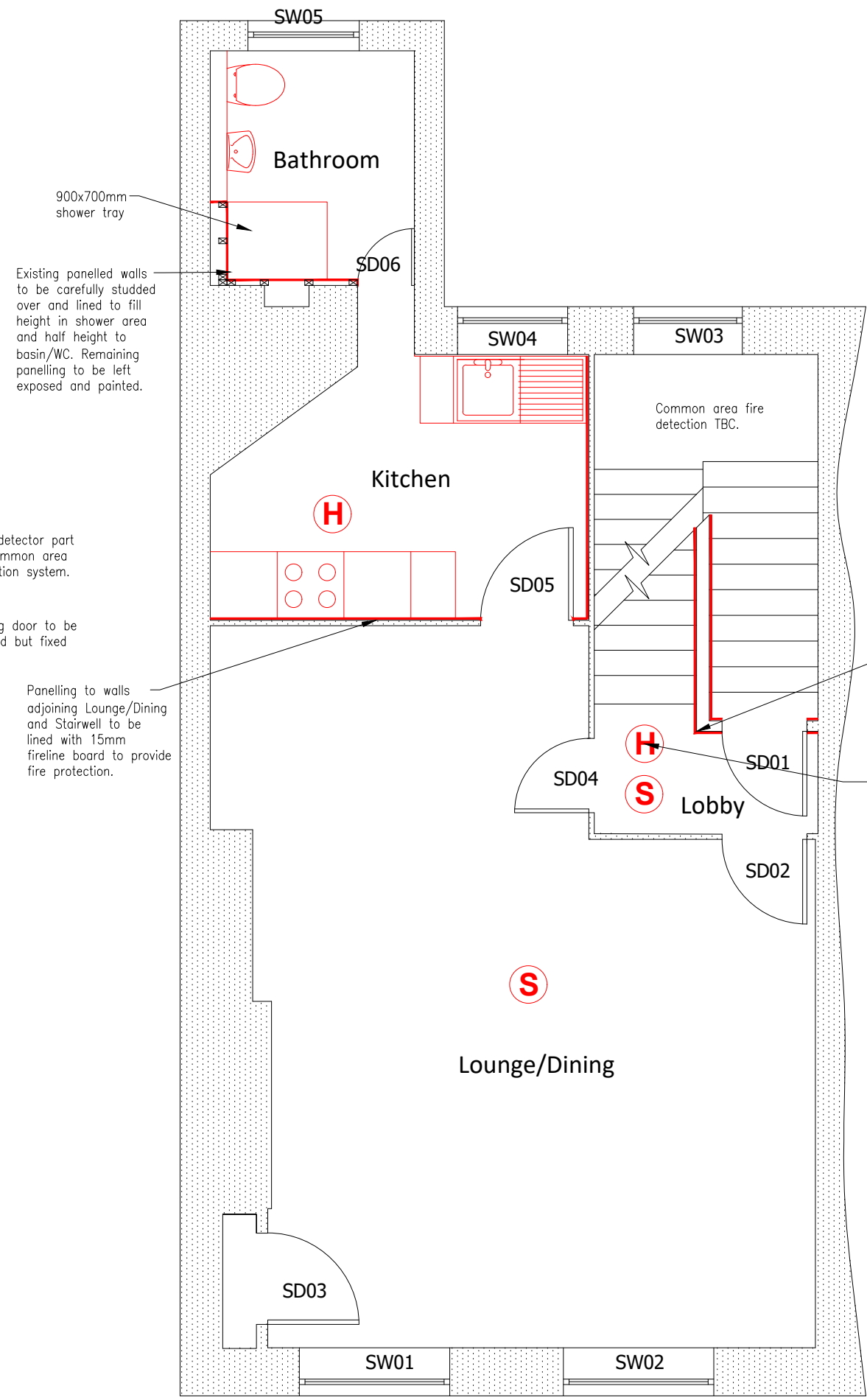
BASEMENT FLOOR



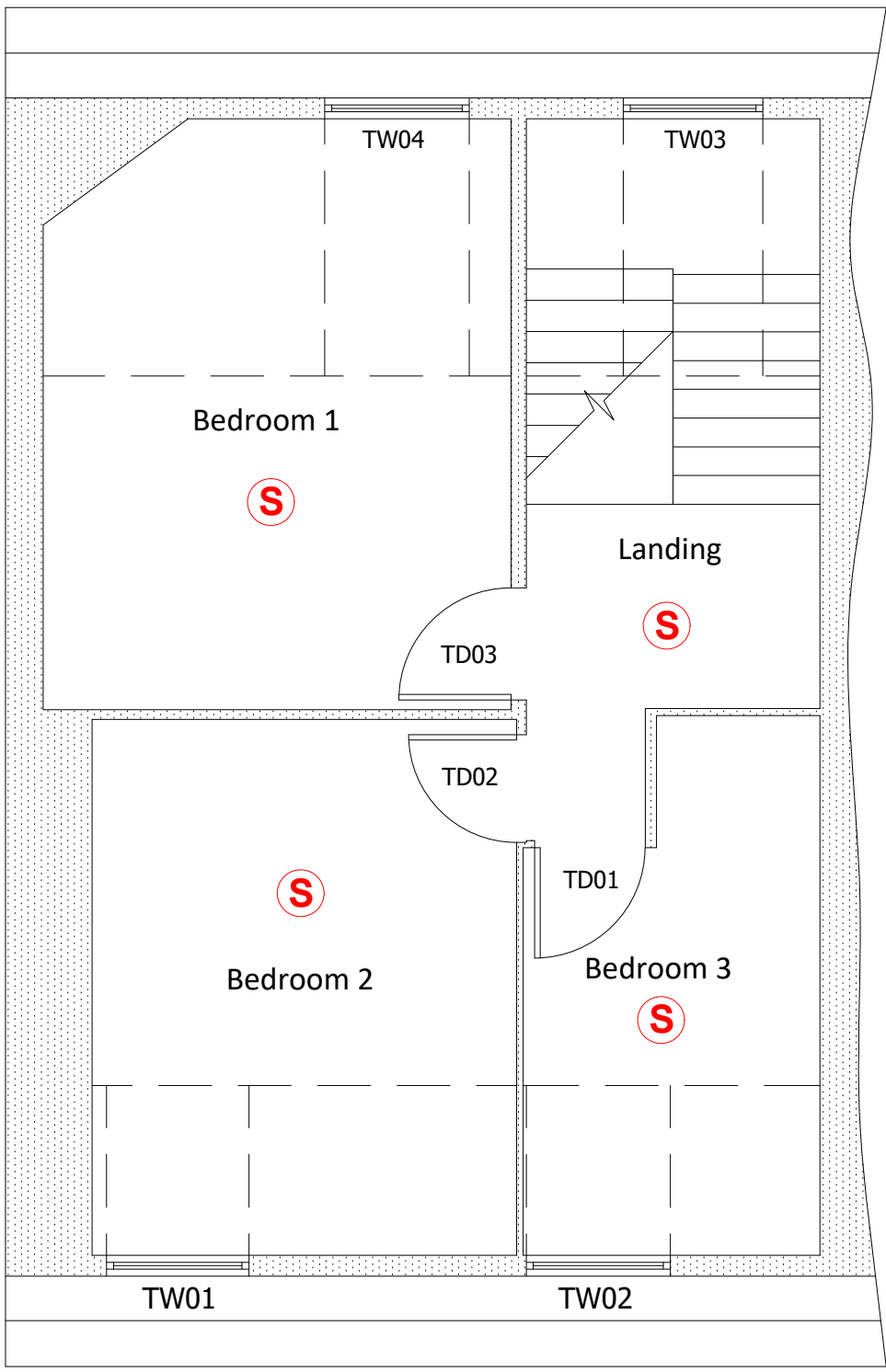
GROUND FLOOR



FIRST FLOOR



SECOND FLOOR



THIRD FLOOR

CARBON MONOXIDE DETECTION

C Indicates a carbon monoxide detector that accords with BS EN 50291:2001, and be powered by a battery designed to operate for the working life of the alarm. The alarm should incorporate a warning device to alert users when the working life of the alarm is due to pass. The alarm must be located in the same room as the appliance:

- On the ceiling at least 300mm from any wall or, if it is located on a wall, as high up as possible above windows and doors, but not within 150mm of the ceiling; and;
- between 1m and 3m horizontally from any appliance.

All in accordance with Approved Document J.

MEANS OF ESCAPE PROVISION

S Area equipped with mains operated optical smoke detection

H Area equipped with mains operated heat detection

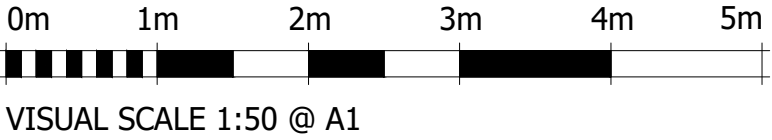
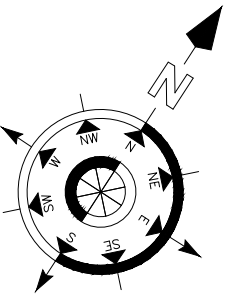
NOTES.
DO NOT SCALE OFF THIS DRAWING


CHECK ALL DIMENSIONS ON SITE BEFORE ANY WORK IS COMMENCED.

ALL GOODS MATERIALS AND WORKMANSHIP MUST CONFORM WITH CURRENT BUILDING REGULATIONS, BRITISH STANDARDS AND CODES OF PRACTICE.

R.I.B.A BASIC SERVICES GIVEN/ NOT GIVEN.

COPYRIGHT OF THIS DRAWING IS RETAINED BY GOULD AND COMPANY LTD. AND IT MUST NOT BE REPRODUCED WITHOUT WRITTEN CONSENT.



REV.	DATE.	BY.	AMENDMENT.
<div><div></div><div><div>2 LUCASTES MEWS PADDOCKHALL ROAD HAYWARDS HEATH WEST SUSSEX RH16 1HE</div><div>(01444) 452604 rh@gouldco.co.uk www.gouldandco-chartered-surveyors.co.uk</div></div></div>			
CLIENT. Great Ormond Street Hospital			
PROJECT. 51 Great Ormond Street			
DRAWING. Floor Plans As Proposed			
DATE. 15.02.17	SCALE. 1:50 A1	DRAWN BY. AMD	CHECKED BY. DL
DRAWING NO. H4857.0.PL002			