

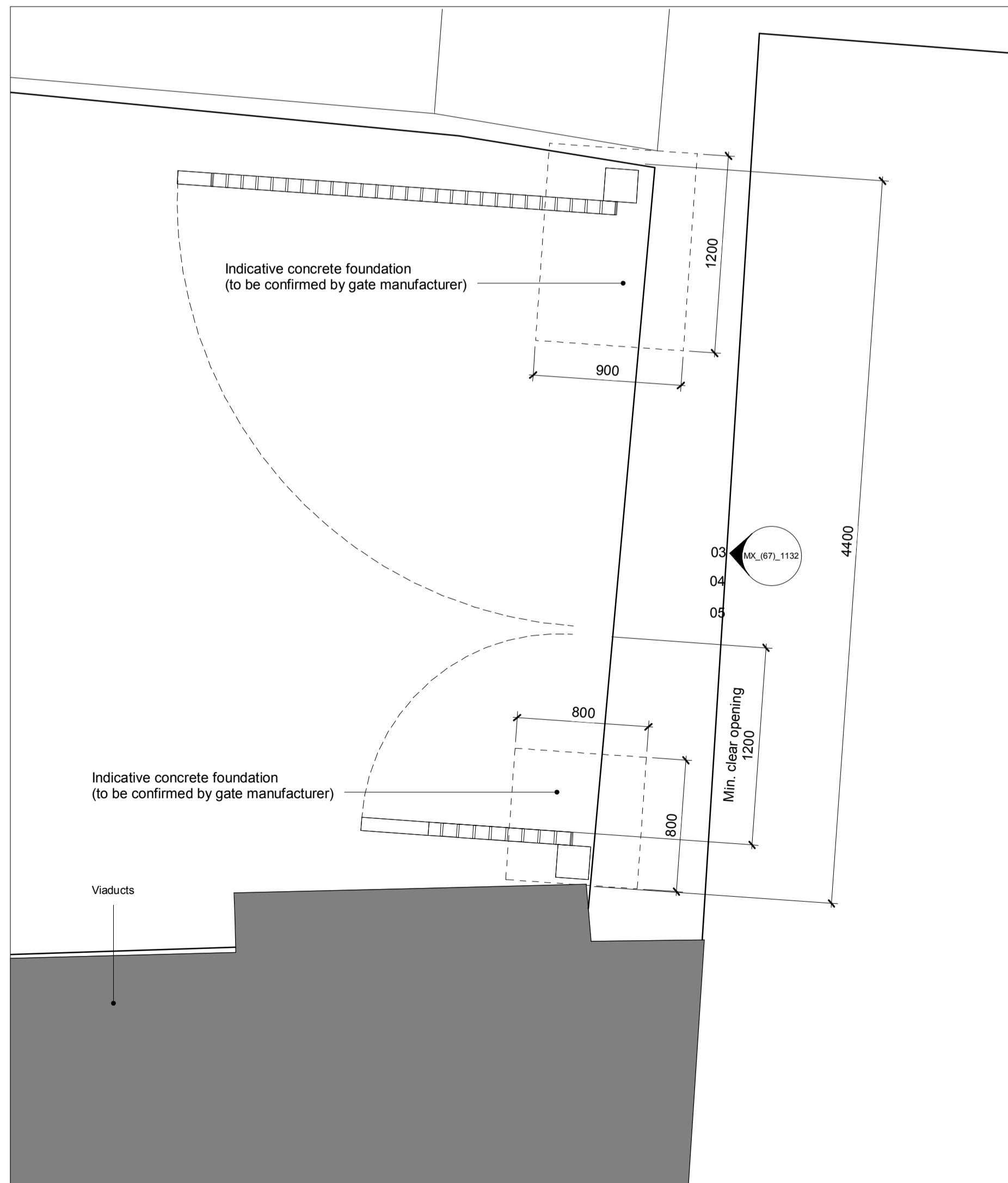
**GATE 20 - 2 leaf**

Dimensions : 4400(W) x 2400(H) Min. above paving level

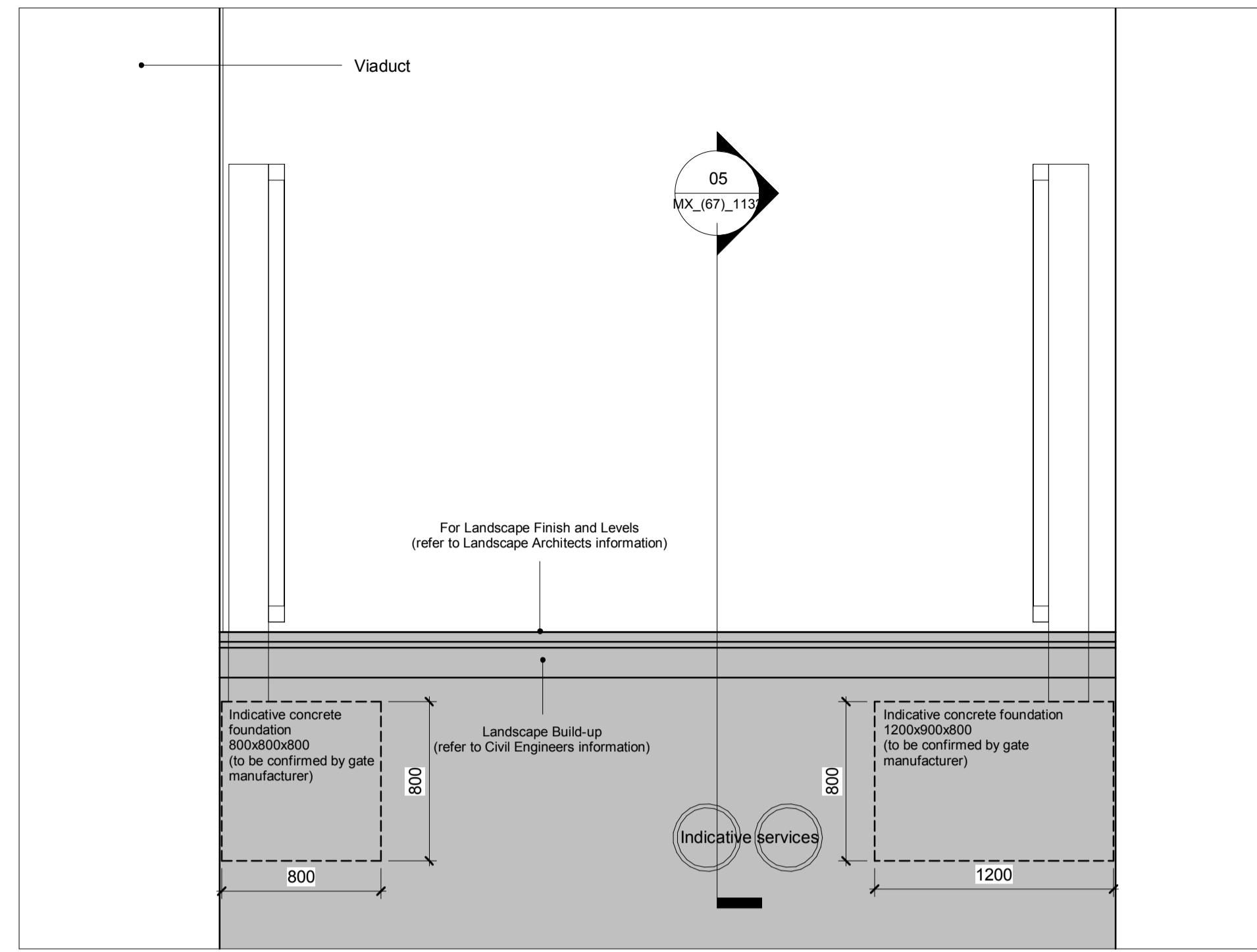
Pedestrian leaf: 1200(W) Min. clear opening x 2400(H) Min. above paving level



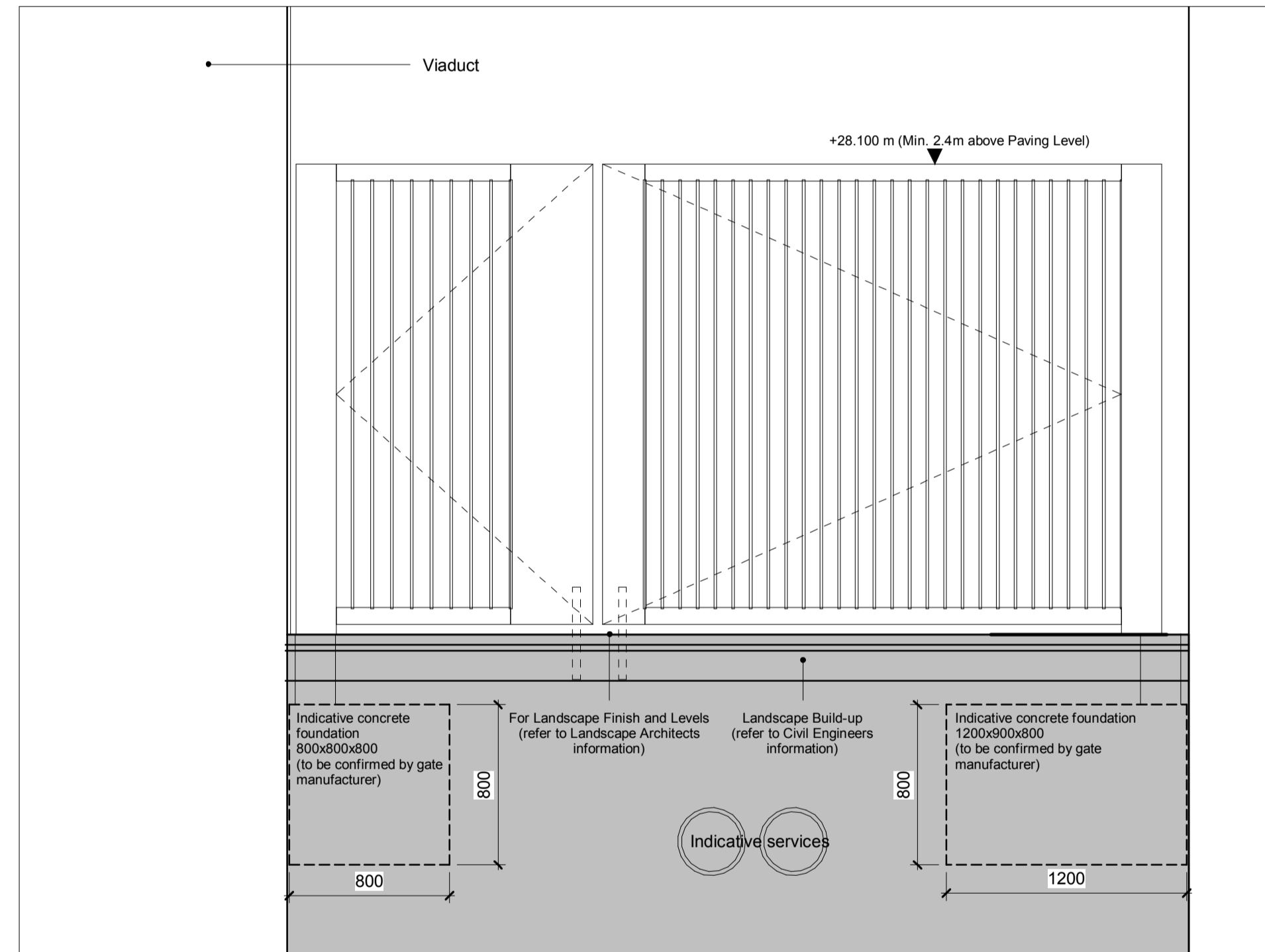
**01 Gates Key Plan 1/1000**



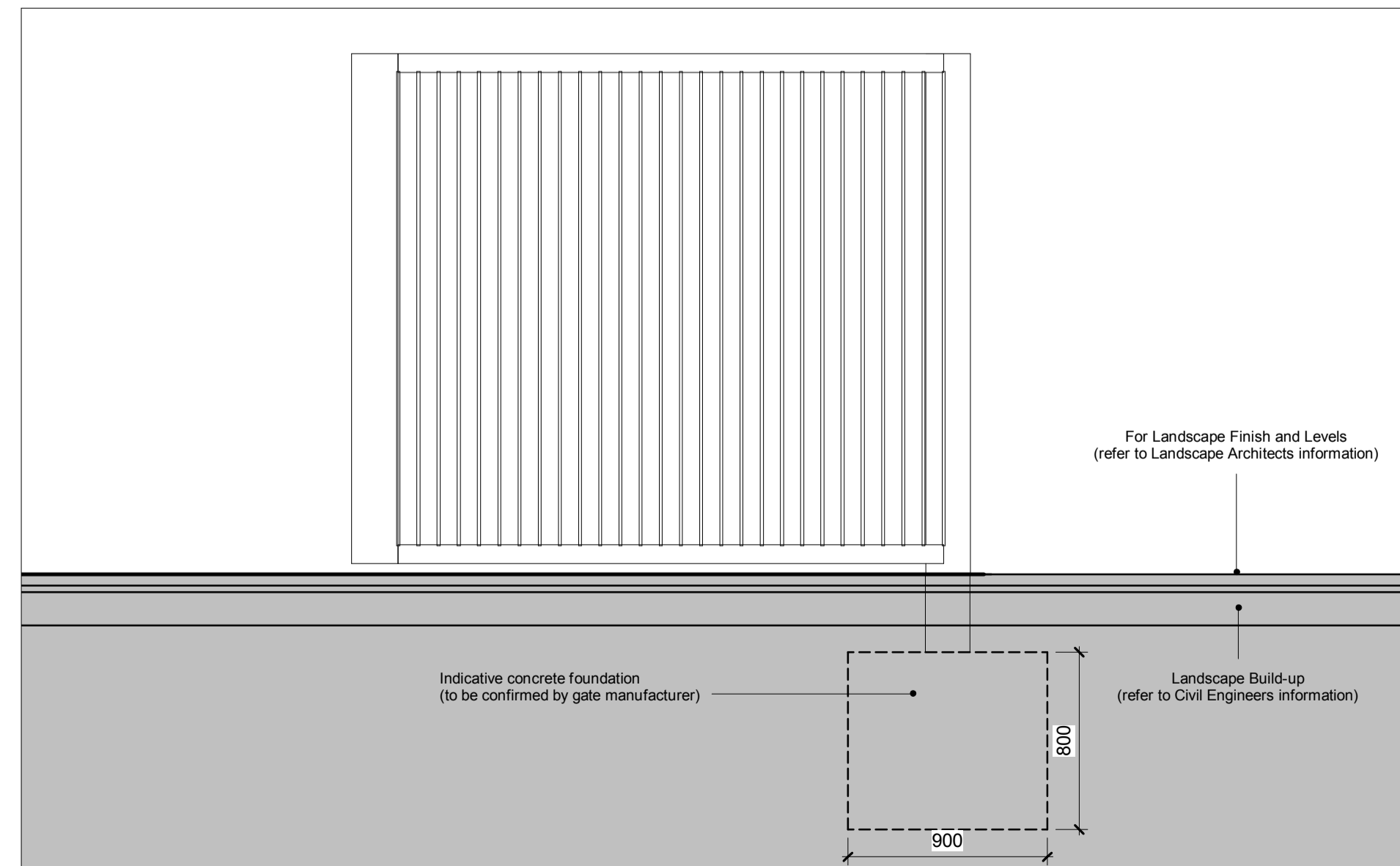
**02 Gate 20 Plan 1/25**



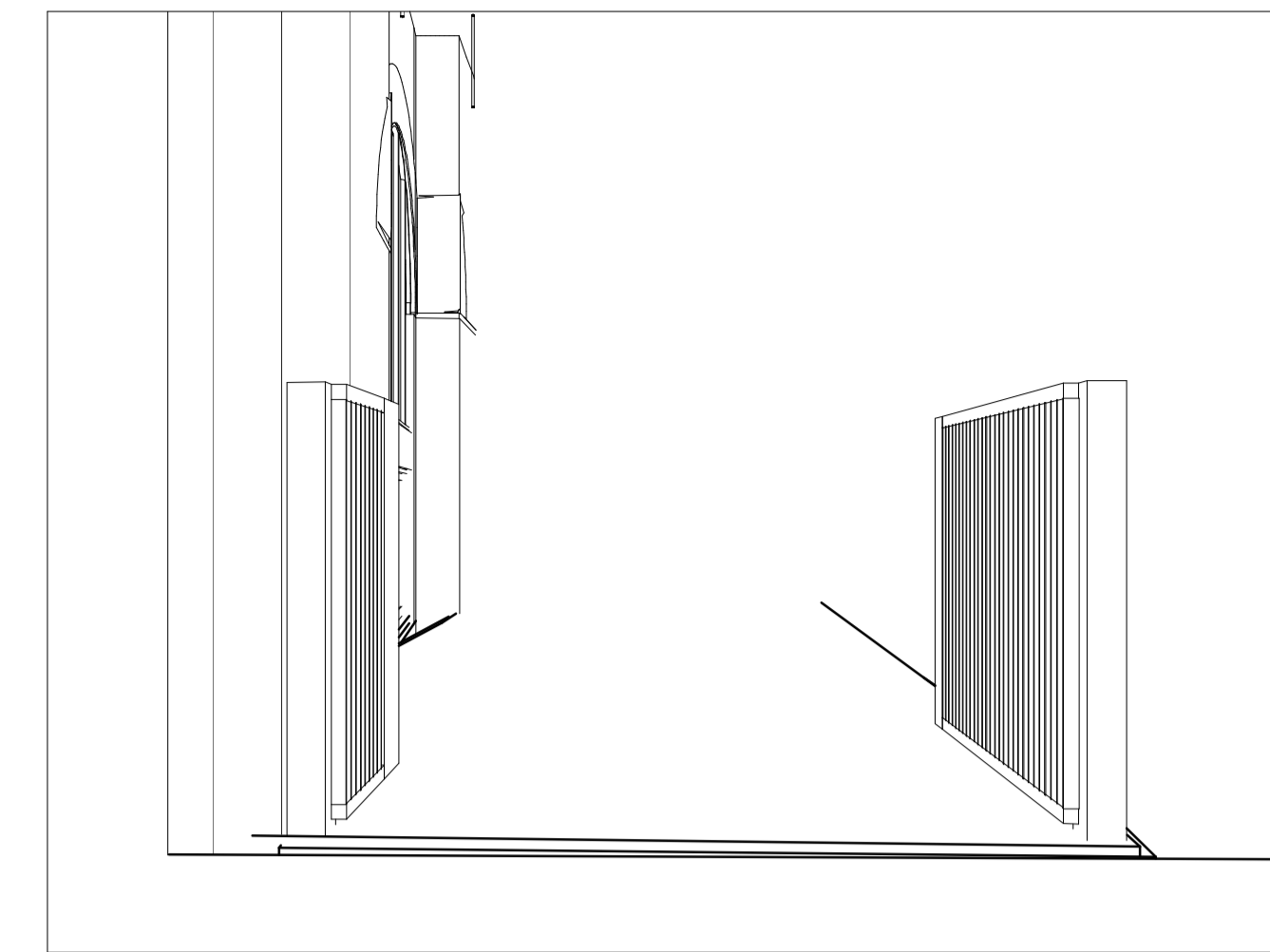
**03 Open Gate 20 Elevation 1/25**



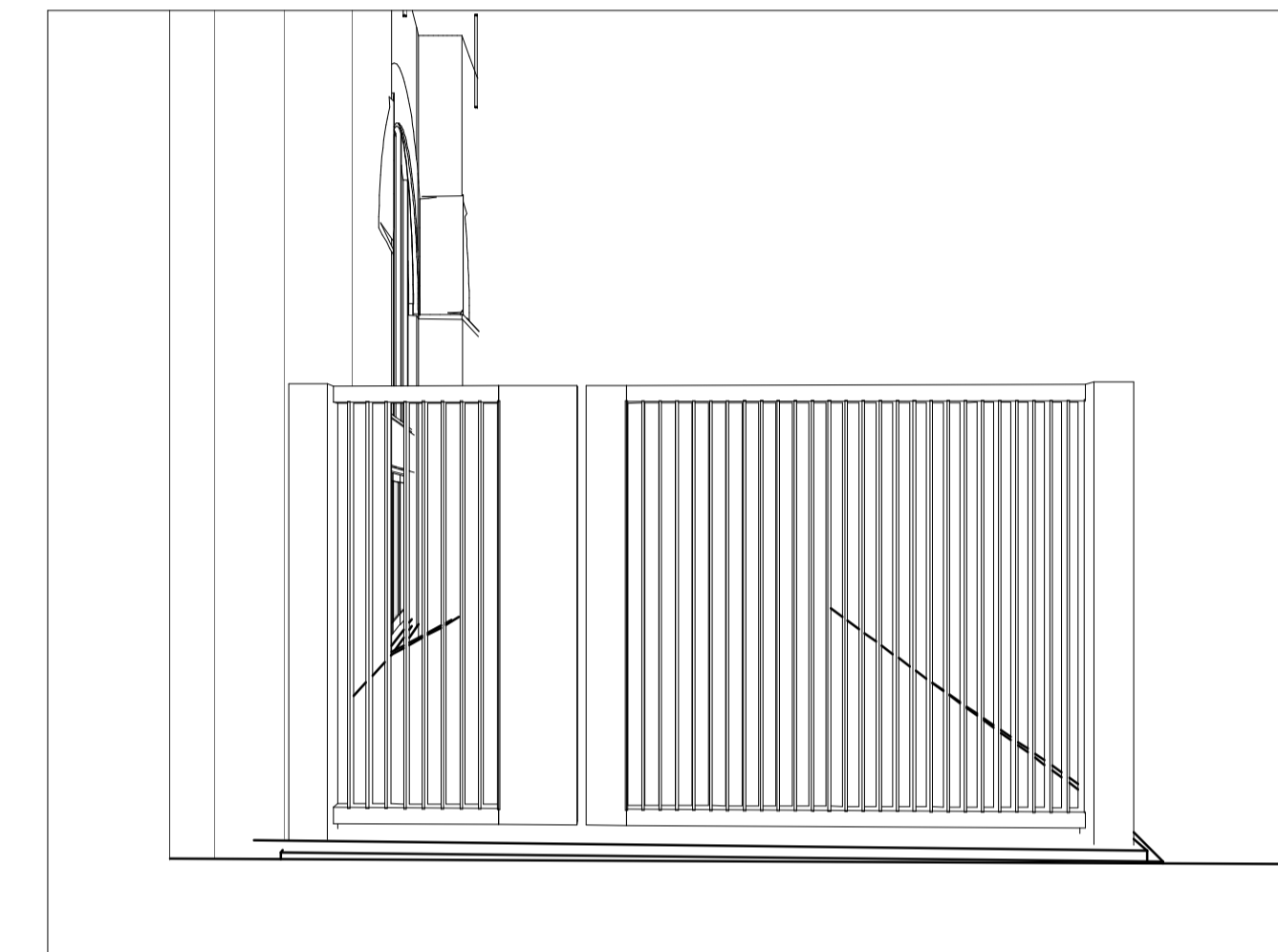
**04 Closed Gate 20 Elevation 1/25**



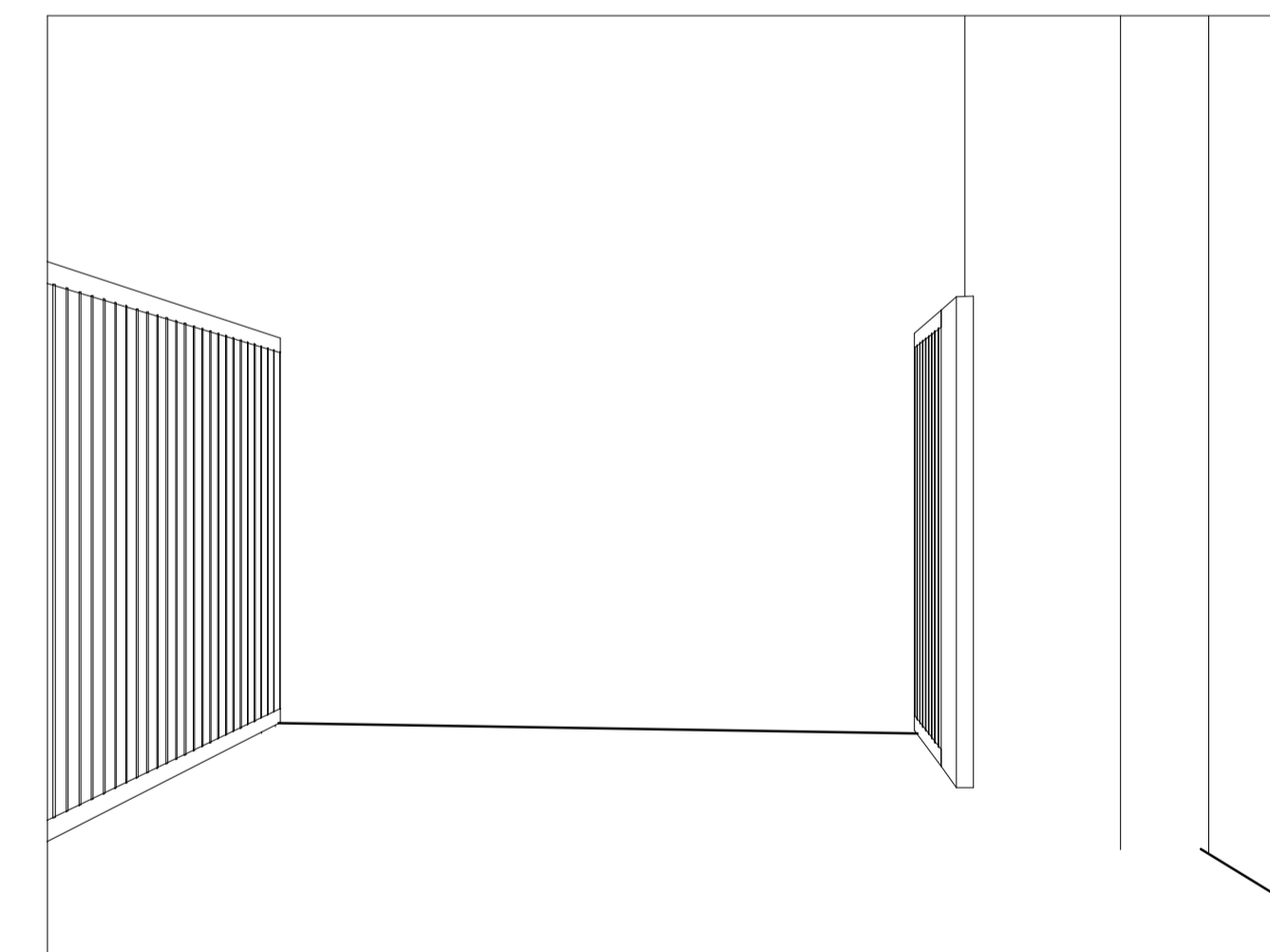
**05 Gate 20 Section 1/25**



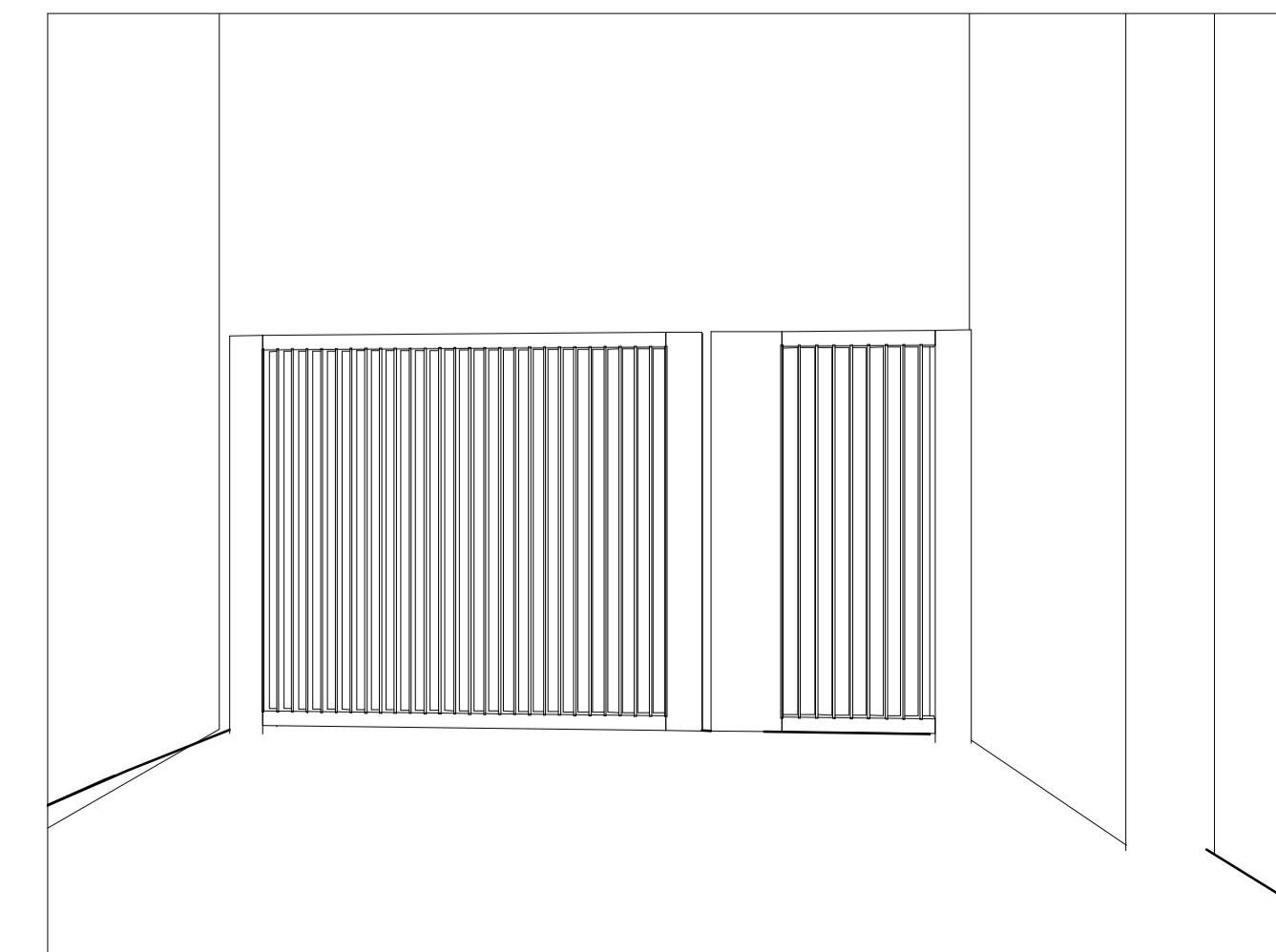
**06 Gate 20 view 01 Open**



**07 Gate 20 view 01 closed**



**08 Gate 20 view 02 Open**



**09 Gate 20 view 02 closed**

**KEY**  
 Masterplan: Refer to 14045\_MX\_(XX)\_XXXX for relevant drawings  
 Building A: Refer to 14045\_AX\_(XX)\_XXXX for relevant drawings  
 Building C: Refer to 14045\_CX\_(XX)\_XXXX for relevant drawings  
 Building DE: Refer to 14045\_DE\_(XX)\_XXXX for relevant drawings  
 Building WX: Refer to 14045\_WX\_(XX)\_XXXX for relevant drawings  
 Viaducts: Refer to 14045\_VX\_(XX)\_XXXX for relevant drawings

For Access & Maintenance refer to:  
 Building A: 14045\_A\_V\_RP002  
 Building C: 14045\_C\_W\_RP001  
 Building DE: 14045\_DE\_RP002  
 Building WX: 14045\_C\_W\_RP001  
 Viaducts: 14045\_A\_V\_RP002

**Notes:**  
 For Structural information refer to the Structural Engineers information.  
 For Below Ground Site-wide Drainage refer to the Civil Engineers information.  
 For Fire Strategy refer to Fire Engineers information.  
 For Landscape refer to the Landscape Architects information. All landscape levels to be confirmed by Landscape Architect.

FOR THE GATE SPECIFICATION REFER TO 14045\_V\_SP\_Q40  
 FOR TYPICAL DETAILS REFER TO DRAWING 14045\_MX\_(67)\_1150  
 FOR INFORMATION ON SHOOT BOLTS AND GATE STOPS REFER TO DRAWING 14045\_MX\_(67)\_1150

ALL POWER REQUIREMENTS TO BE CONFIRMED BY MEPH ENGINEER AND SUBCONTRACTOR.

SUBCONTRACTOR TO ADVISE ON GATE IRONMONGERY INCLUDING FLOOR LOCATED SHOOT BOLTS AND GATE STOPS.

**NOTES**  
 Refer to Schedule MX\_(67)\_1090 and MX\_(67)\_1010.

External levels and build-ups are indicative. Refer to Landscape information and Civil Engineer information.

Gate dimensions are indicative. To be confirmed on site by manufacturer.

Subcontractor to confirm ironmongery and operating mechanisms to meet current legislation and best practice.

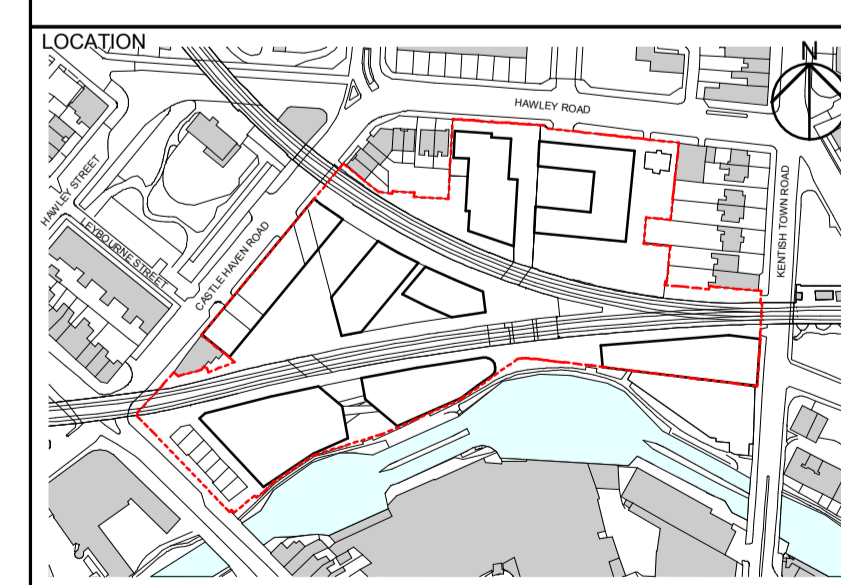
| F01 | 05/05/17 | For Coordination |
|-----|----------|------------------|
| REV | DATE     | DESCRIPTION      |

| CONSULTANTS           |                     |
|-----------------------|---------------------|
| CLIENT:               | Stanley Sidings     |
| CONTRACTOR:           | Mace Group          |
| STRUCTURAL ENGINEER:  | Walsh Group         |
| MECHANICAL ENGINEER:  | Aecom               |
| COST CONSULTANT:      | Gardiner & Theobald |
| PROJECT MANAGER:      | Gardiner & Theobald |
| ACOUSTIC CONSULTANT:  | Hoare Lea           |
| TRANSPORT CONSULTANT: | Arup                |
| PLANNING CONSULTANT:  | Gerald Eve          |
| LANDSCAPE ARCHITECT:  | Fabrik              |
| CDM CO-ORDINATOR:     | Gardiner & Theobald |

- NOTE**
- Do not scale from this drawing.
  - All dimensions to be checked on site by the contractor and such dimensions to be his responsibility. Report all drawing errors, omissions and discrepancies to the architect.
  - This document may be issued in an uncontrolled CAD format to enable others to use it as background information to make alterations and/or additions. In that instance the file will be accompanied by a PDF version. It is for those making such alterations and additions to ensure that they make use of current background information.
  - AHMM Ltd accepts no liability for any such alterations or additions to the background information or arising out of changes to background information which occur prior to alterations of additions being made.

**Note**

All gates to meet accessibility requirements for widths and opening force  
 All gates within residential circulation routes to be provided with fob access and handles to permit free escape from inside  
 Handles / mechanisms etc. to be suitable for use by people with limited strength and dexterity  
 Opening / closing force to be within 30N or gate will require automatic opening  
 All door casing assemblies to be tamper proof and external hinges to be provided with welded cover plates to prevent climbing  
 Emergency escape sign and statutory signage to be provided to gates within door casing zone  
 Gate lettering design is indicative only - design TBC  
 The height of the gates will be reviewed during Stage E to ensure coordination with transport heights of adjacent buildings



**ALLFORD HALL MONAGHAN MORRIS**  
 ARCHITECTS Ltd  
 5-23 OLD STREET, LONDON, EC1V 9HL  
 TEL 020 7251 5261 FAX 020 7251 5123 WEB WWW.AHMM.CO.UK

job title  
**Camden Lock Village**  
 Gate 20

|          |              |                   |                  |
|----------|--------------|-------------------|------------------|
| drawn by | checked      | scale             | status           |
| MP       | AH           | As indicated @ A1 | For Coordination |
| project  | drawing no.  | revision          |                  |
| 14045    | MX_(67)_1132 | F01               |                  |