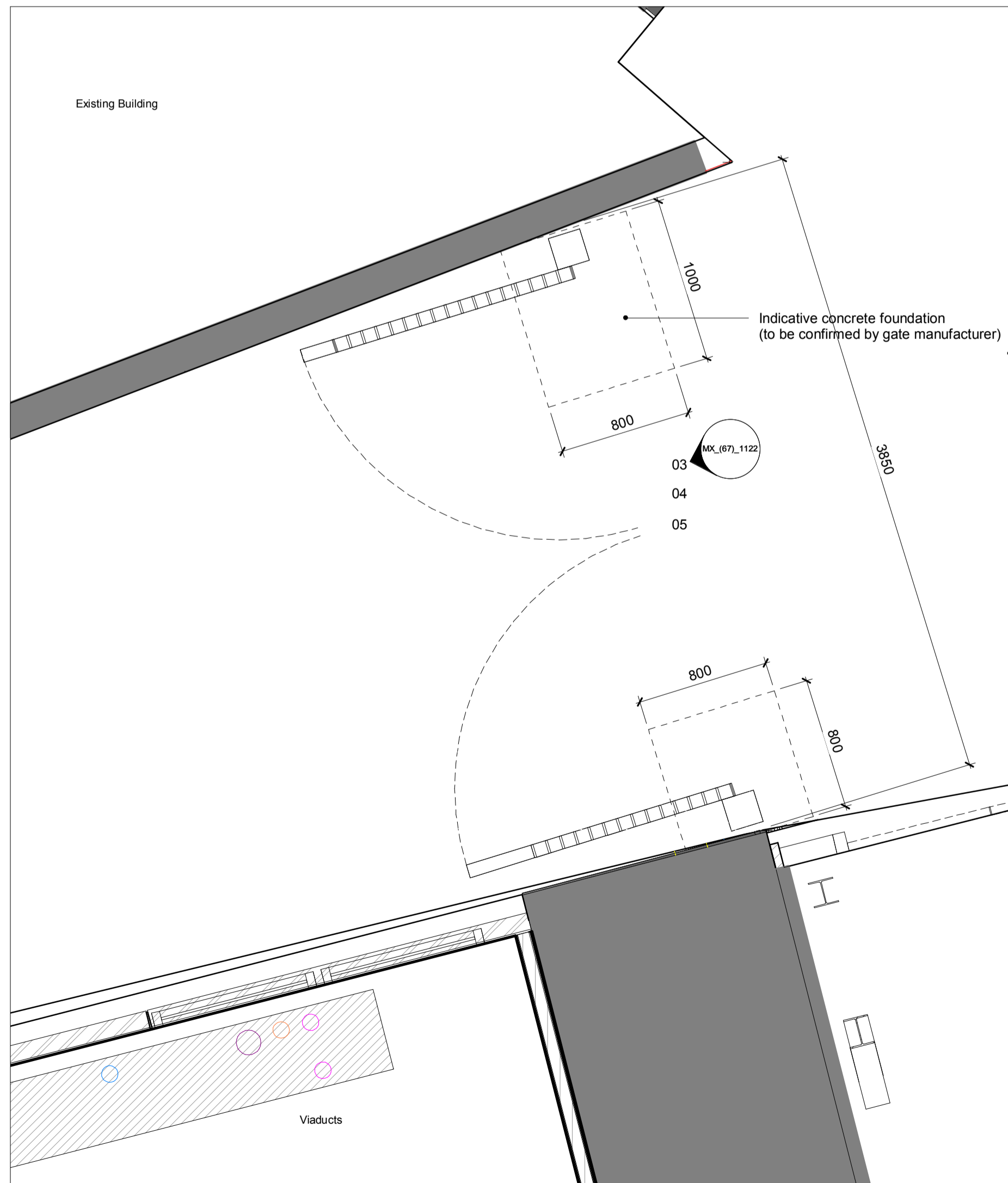


GATE 10 - 2 leaf - equal leaves

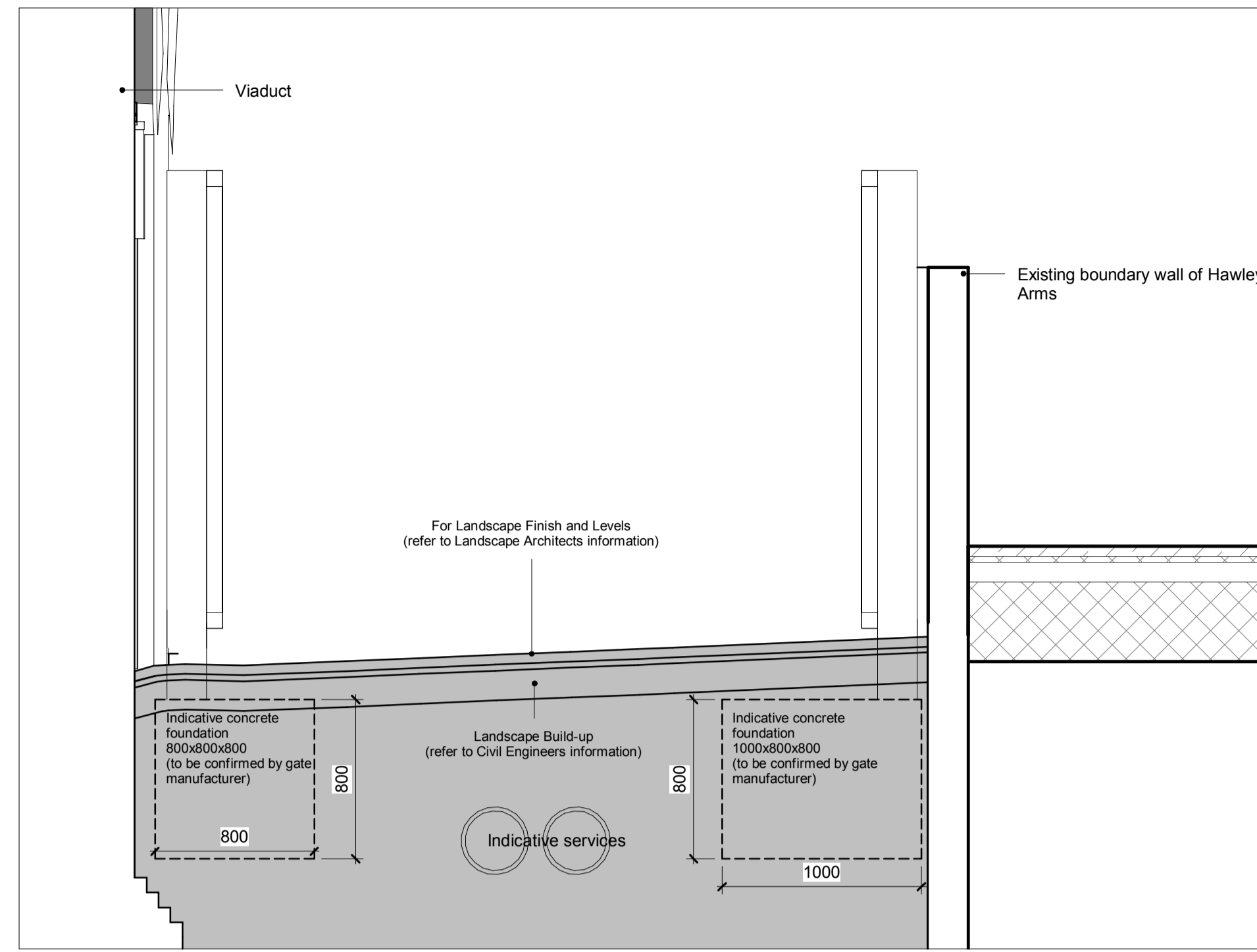
Dimensions : 3850(W) x 2400(H) Min above paving level



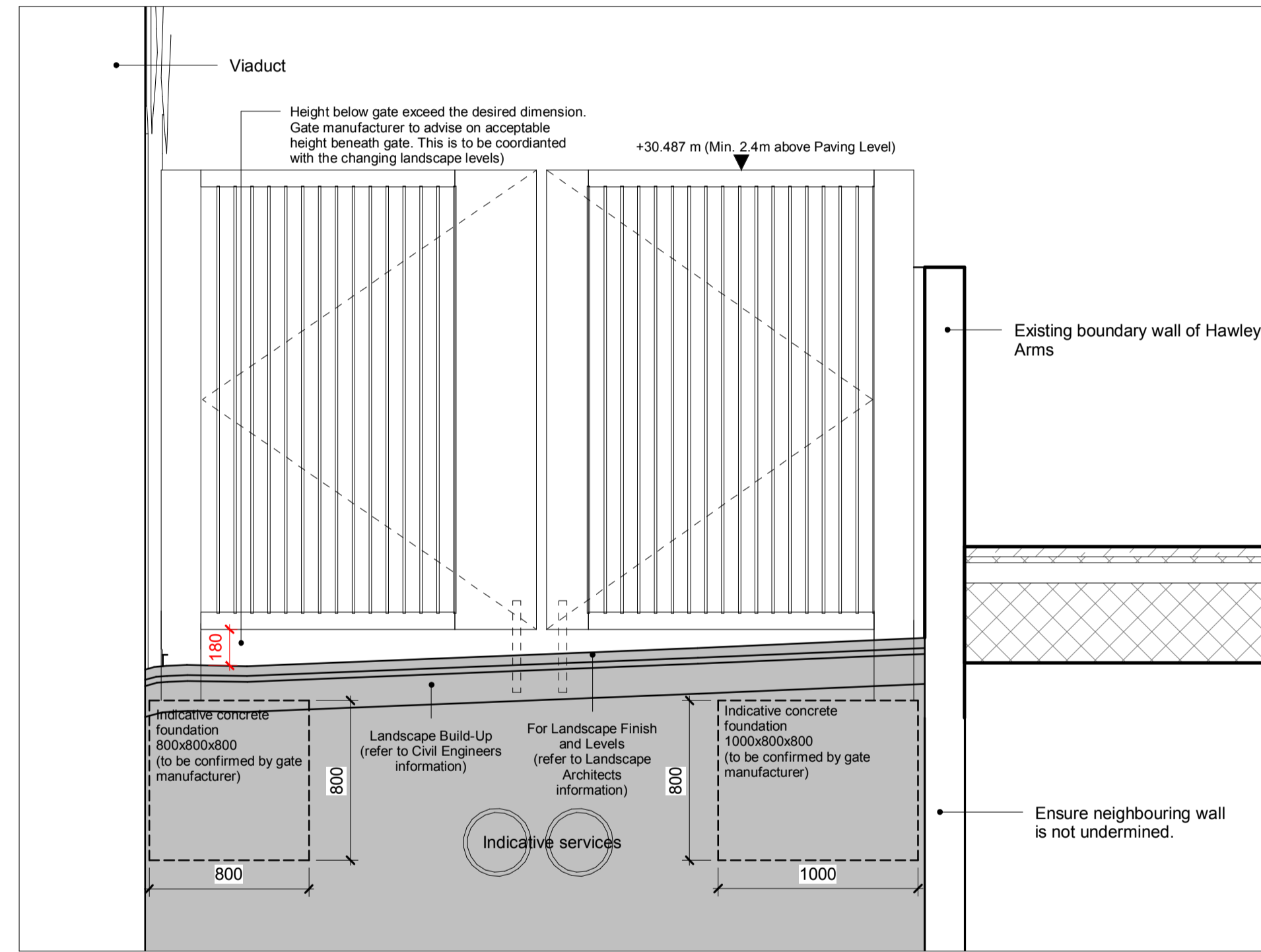
01 Gates Key Plan 1/1000



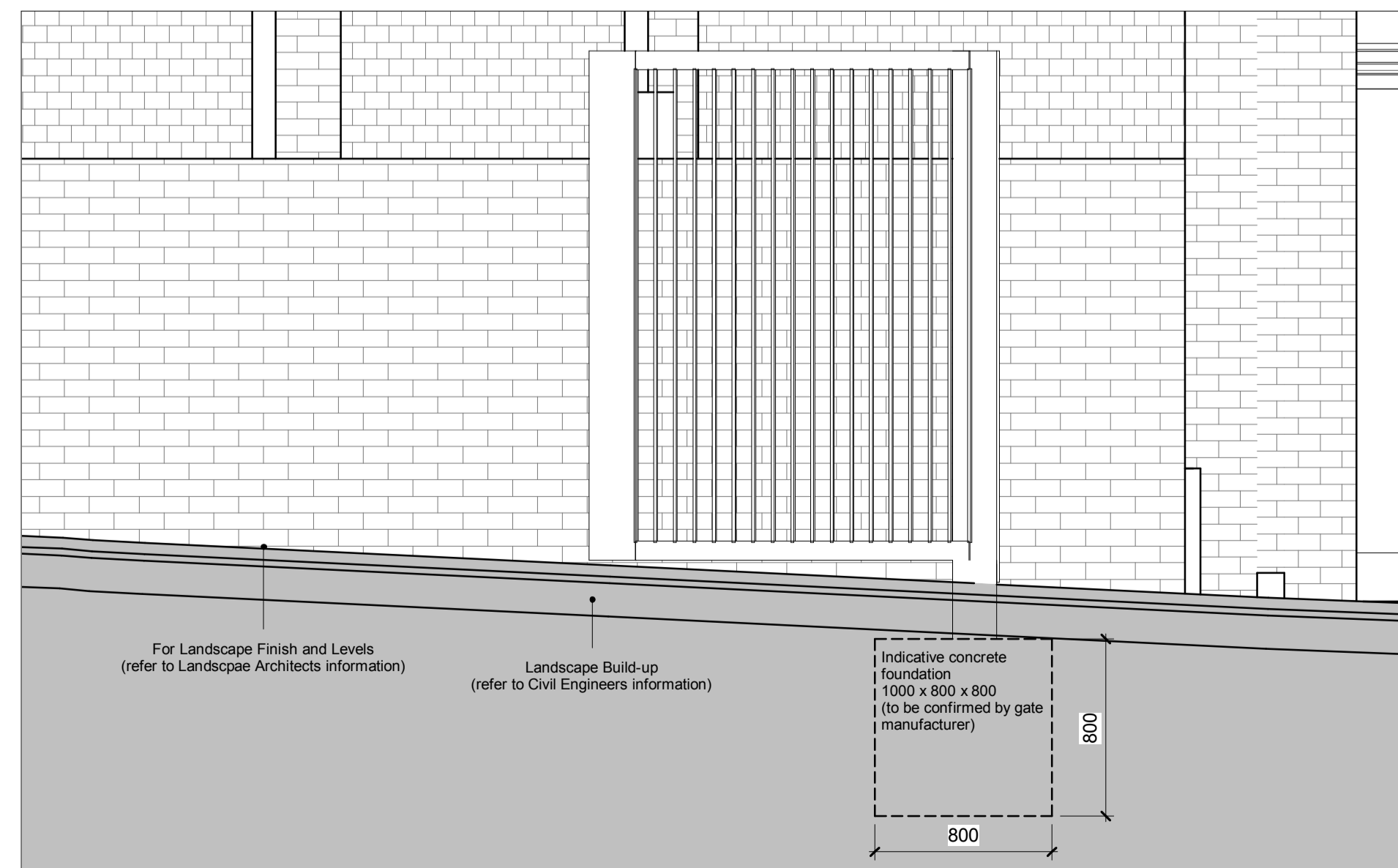
02 Gate 10 Plan 1/25



03 Open Gate 10 Elevation 1/25



04 Closed Gate 10 Elevation 1/25



05 Gate 10 Section 1/25



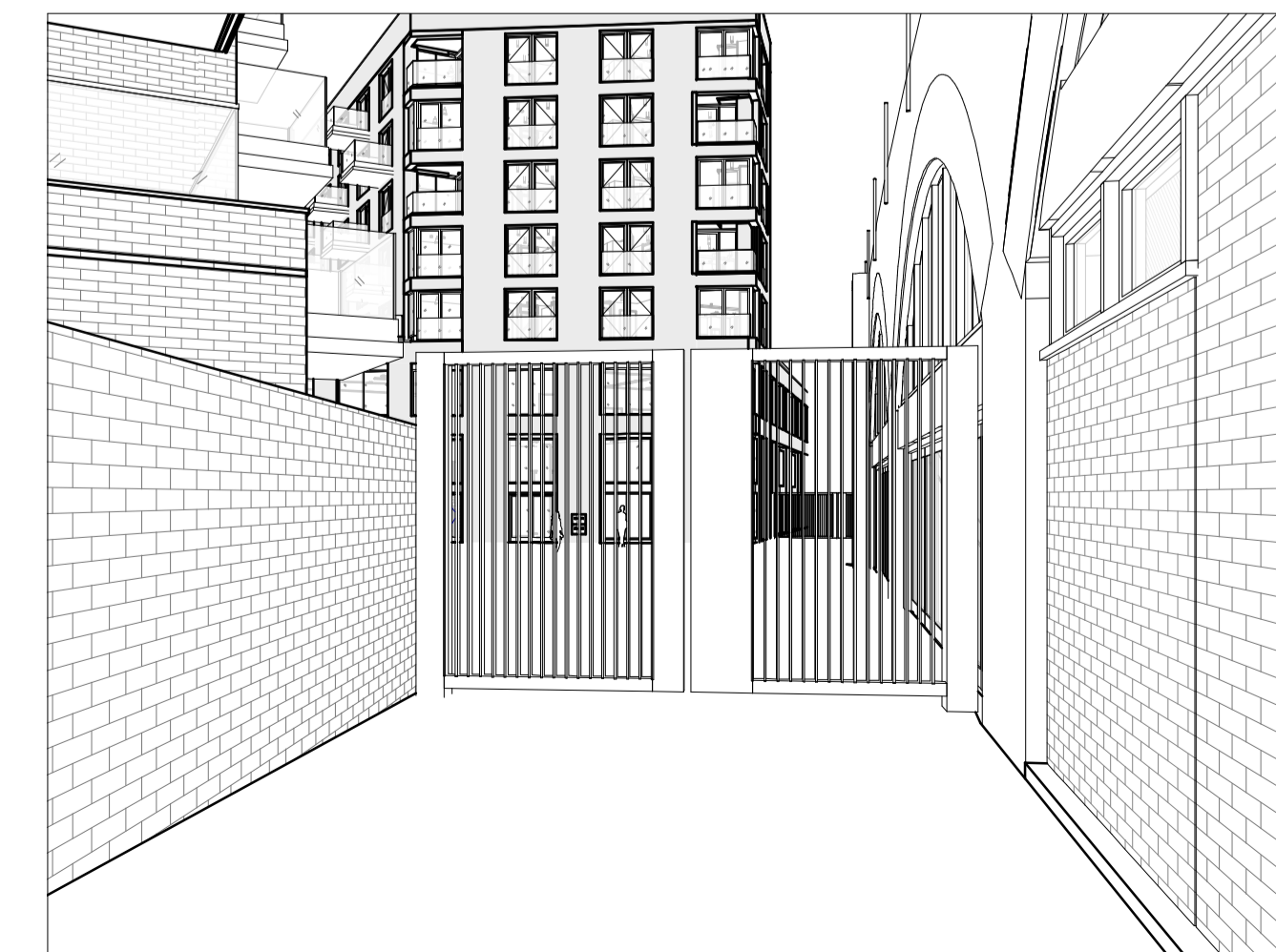
06 Gate 10 View 01 Open



07 Gate 10 View 01 Closed



08 Gate 10 View 02 Open



09 Gate 10 View 02 Closed

KEY
 Masterplan: Refer to 14045_MX_(XX)_XXXX for relevant drawings
 Building A: Refer to 14045_AX_(XX)_XXXX for relevant drawings
 Building C: Refer to 14045_CX_(XX)_XXXX for relevant drawings
 Building DE: Refer to 14045_DE_(XX)_XXXX for relevant drawings
 Building WX: Refer to 14045_WX_(XX)_XXXX for relevant drawings
 Viaducts: Refer to 14045_VX_(XX)_XXXX for relevant drawings

For Access & Maintenance refer to:
 Building A: 14045_A_V_RP002
 Building C: 14045_C_W_RP001
 Building DE: 14045_DE_RP002
 Building WX: 14045_C_W_RP001
 Viaducts: 14045_A_V_RP002

NOTES
 For Structural information refer to the Structural Engineers information.
 For Below Ground Site-wide Drainage refer to the Civil Engineers information.
 For Fire Strategy refer to Fire Engineers information.
 For Landscape refer to Landscape Architects information. All landscape levels to be confirmed by Landscape Architect.

FOR THE GATE SPECIFICATION REFER TO 14045_V_SP_Q40
 FOR TYPICAL DETAILS REFER TO DRAWING 14045_MX_(67)_1150
 FOR INFORMATION ON SHOOT BOLTS AND GATE STOPS REFER TO DRAWING 14045_MX_(67)_1150

ALL POWER REQUIREMENTS TO BE CONFIRMED BY MEPH ENGINEER AND SUBCONTRACTOR.

SUBCONTRACTOR TO ADVISE ON GATE IRONMONGERY INCLUDING FLOOR LOCATED SHOOT BOLTS AND GATE STOPS.

Refer to Schedule MX_(67)_1090 and MX_(67)_1010.

External levels and build-ups are indicative. Refer to Landscape information and Civil Engineer information.

Gate dimensions are indicative. To be confirmed on site by manufacturer.

Subcontractor to confirm ironmongery and operating mechanisms to meet current legislation and best practice.

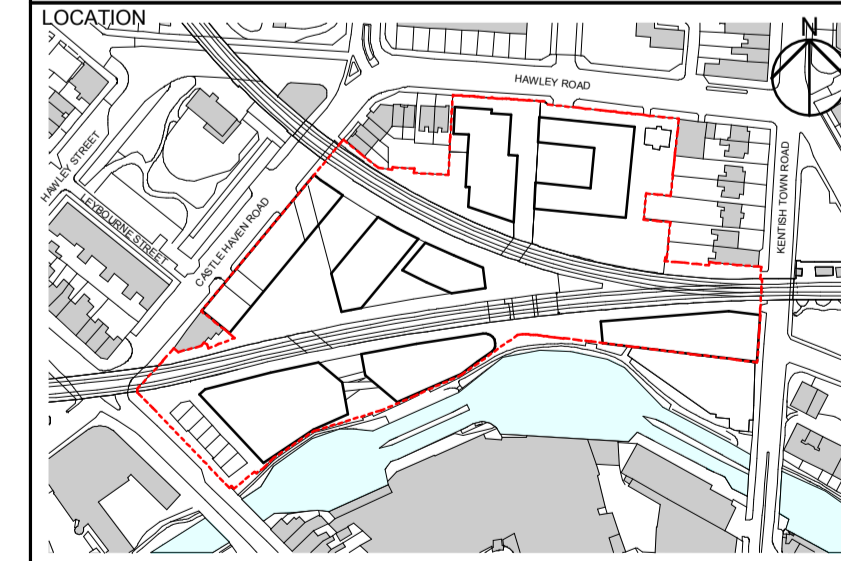
REV	DATE	DESCRIPTION
F01	05/05/17	For Coordination

CONSULTANTS	
CLIENT:	Stanley Sidings
CONTRACTOR:	Mace Group
STRUCTURAL ENGINEER:	Walsh Group
MECHANICAL ENGINEER:	Aecom
COST CONSULTANT:	Gardiner & Theobald
PROJECT MANAGER:	Gardiner & Theobald
ACOUSTIC CONSULTANT:	Hoare Lea
TRANSPORT CONSULTANT:	Arup
PLANNING CONSULTANT:	Gerald Eve
LANDSCAPE ARCHITECT:	Fabrik
CDM CO-ORDINATOR:	Gardiner & Theobald

- NOTE**
- Do not scale from this drawing.
 - All dimensions to be checked on site by the contractor and such dimensions to be his responsibility. Report all drawing errors, omissions and discrepancies to the architect.
 - This document may be issued in an uncontrolled CAD format to enable others to use it as background information to make alterations and/or additions. In that instance the file will be accompanied by a PDF version. It is for those making such alterations and additions to ensure that they make use of current background information.
 - AHMM Ltd accepts no liability for any such alterations or additions to the background information or arising out of changes to background information which occur prior to alterations of additions being made.

Note

All gates to meet accessibility requirements for widths and opening force
 All gates within residential circulation routes to be provided with fob access and handles to permit free escape from inside
 Handles / mechanisms etc to be suitable for use by people with limited strength and dexterity
 Opening / closing force to be within 30N or gate will require automatic opening
 All door casing assemblies to be tamper proof and external hinges to be provided with welded cover plates to prevent climbing
 Emergency escape sign and statutory signage to be provided to gates within door casing zone
 Gate lettering design is indicative only - design TBC
 The height of the gates will be reviewed during Stage E to ensure coordination with transom heights of adjacent buildings



ALLFORD HALL MONAGHAN MORRIS
 ARCHITECTS Ltd
 5-23 OLD STREET, LONDON, EC1V 9HL
 TEL 020 7251 5261 FAX 020 7251 5123 WEB WWW.AHMM.CO.UK

job title
Camden Lock Village

drawing title / location
Gate 10

drawn by	checked	scale	status
MP	AH	As indicated @ A1	For Coordination

project	drawing no.	revision
14045	MX_(67)_1122	F01