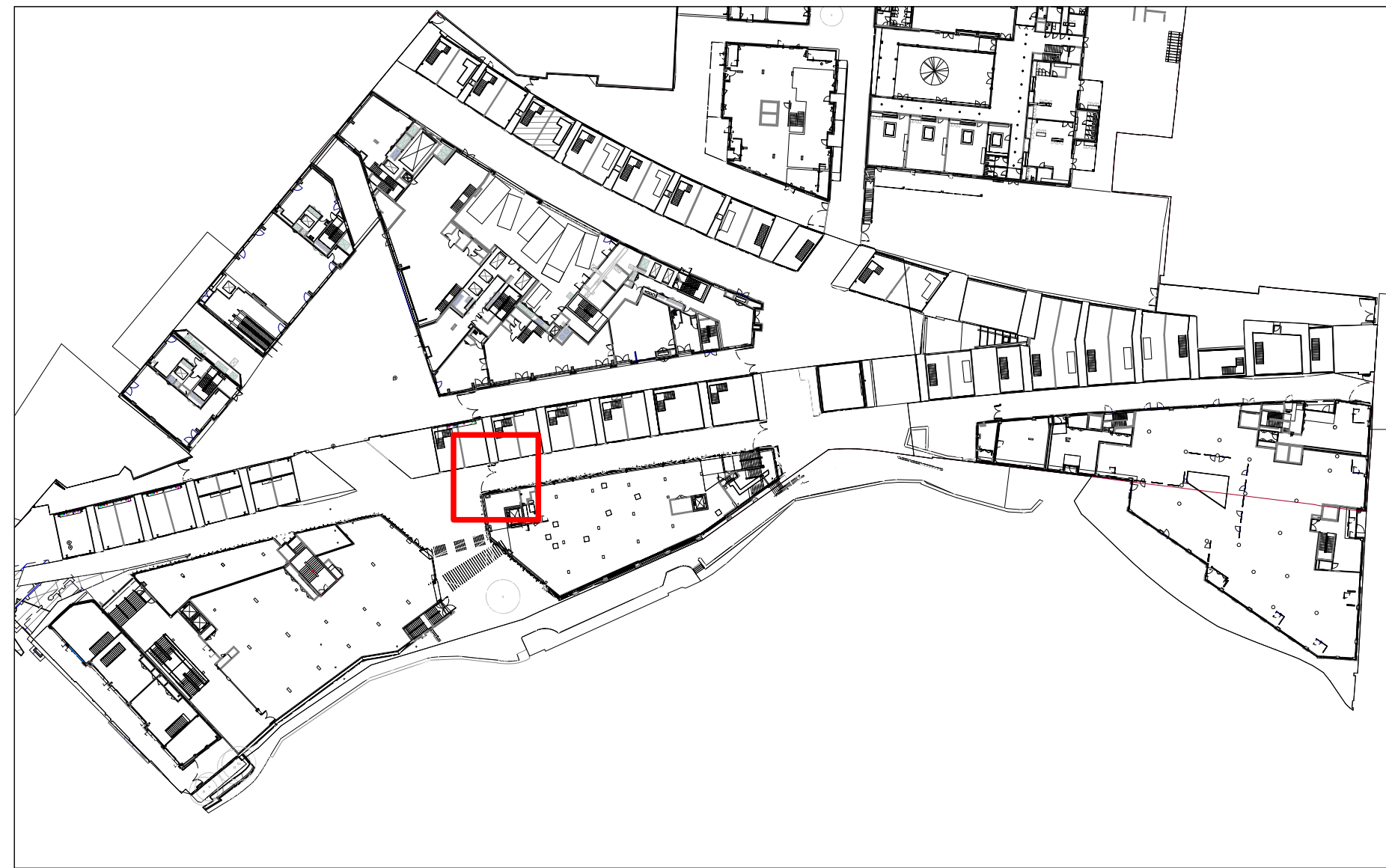


**GATE 03 - 2 leaf**

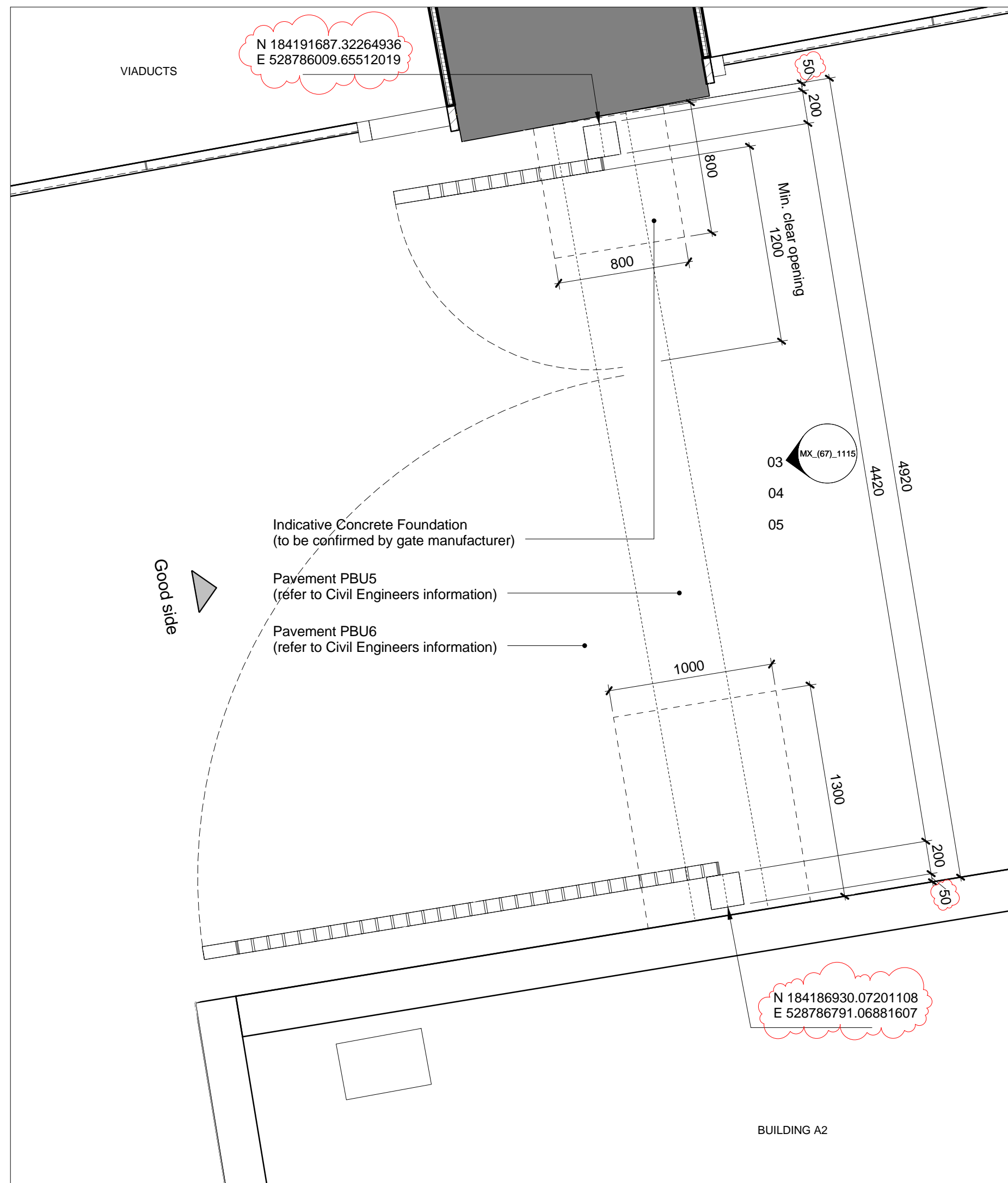
Dimensions : 4860(W) x 2400(H) Min. above paving level

Pedestrian leaf: 1200(W) Min. clear opening x 2400(H) min. height above external FFL

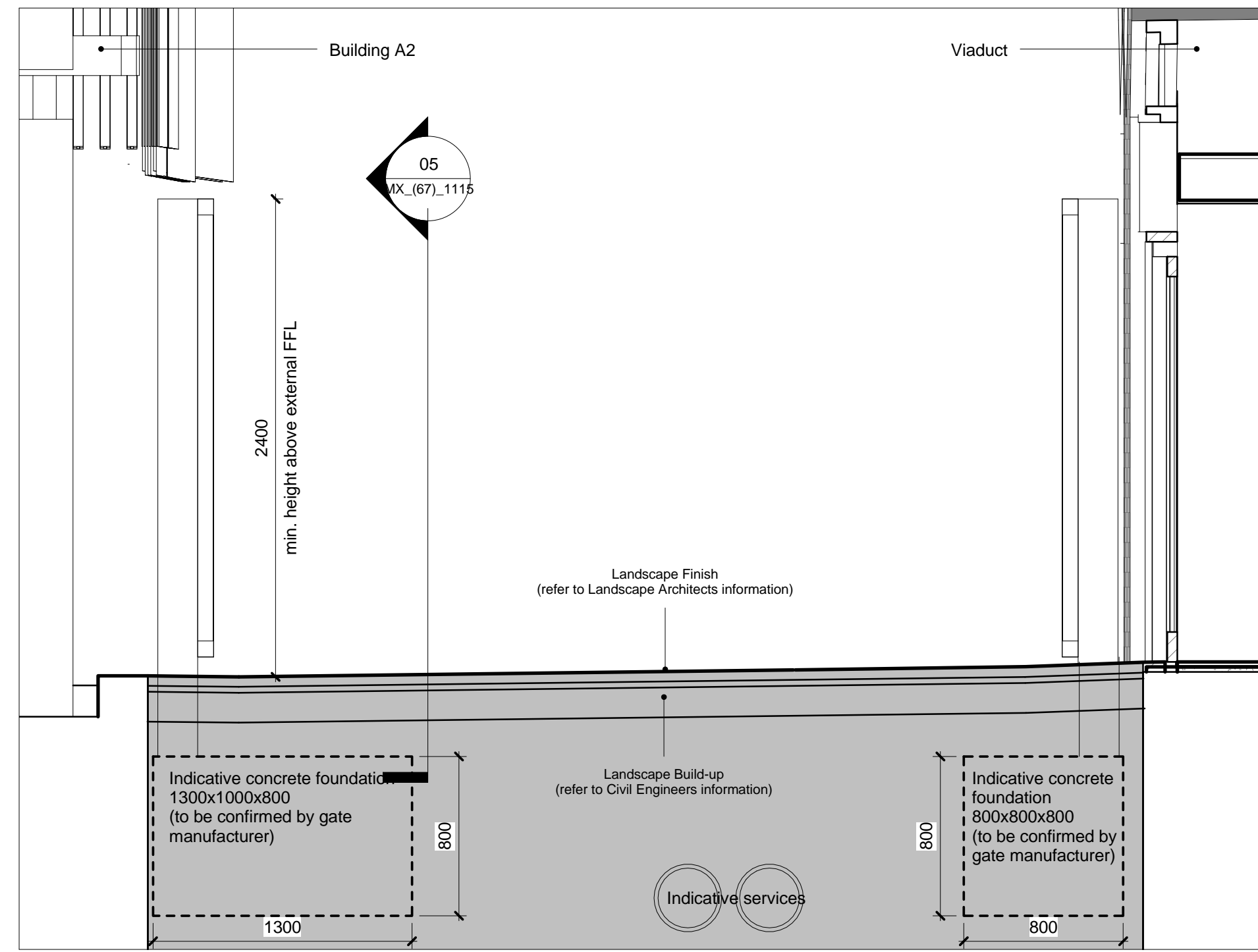
Special Conditions : Fire Tender Egress.  
Electronic access control required.



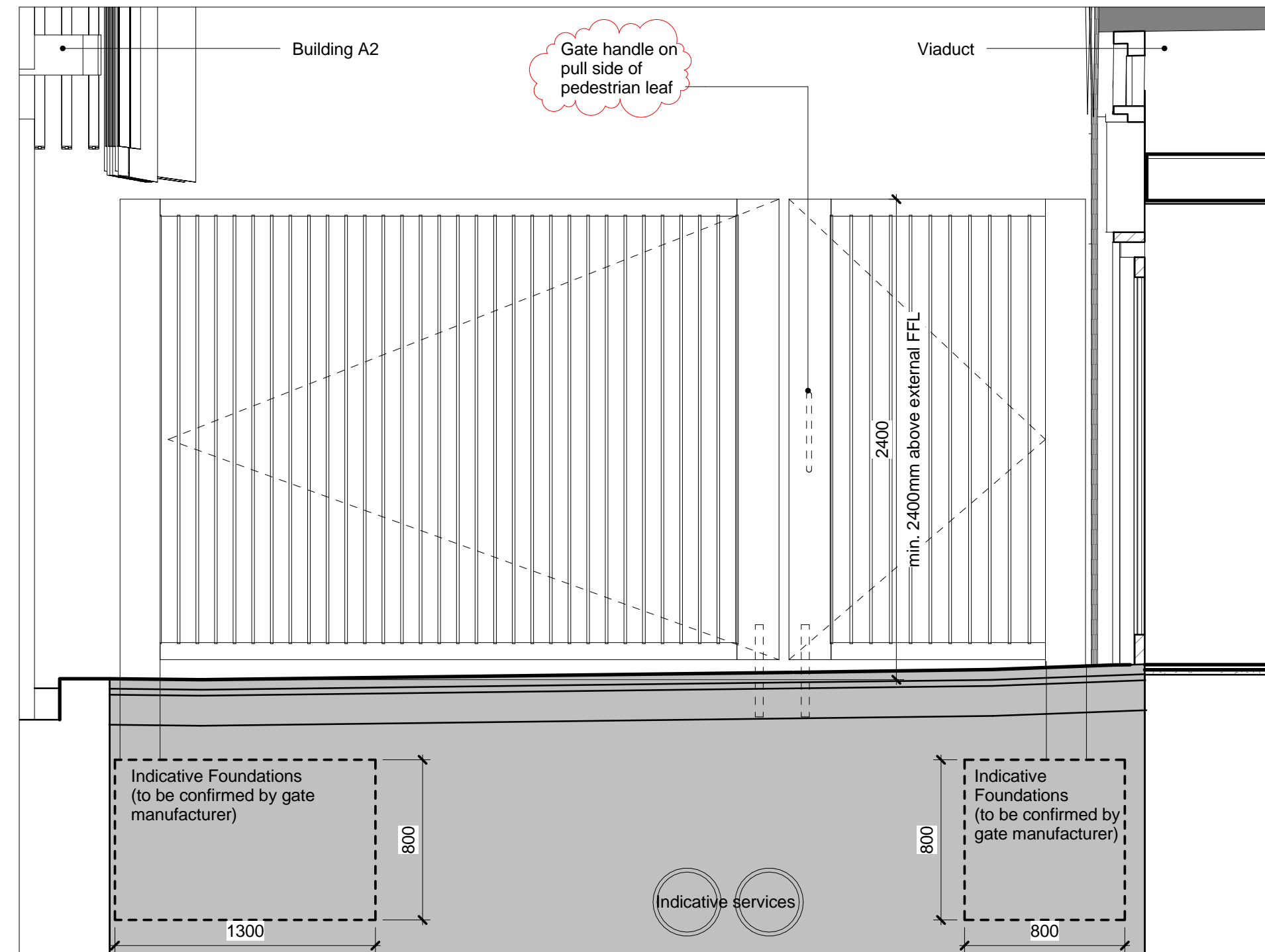
01 Gates Key Plan 1/1000



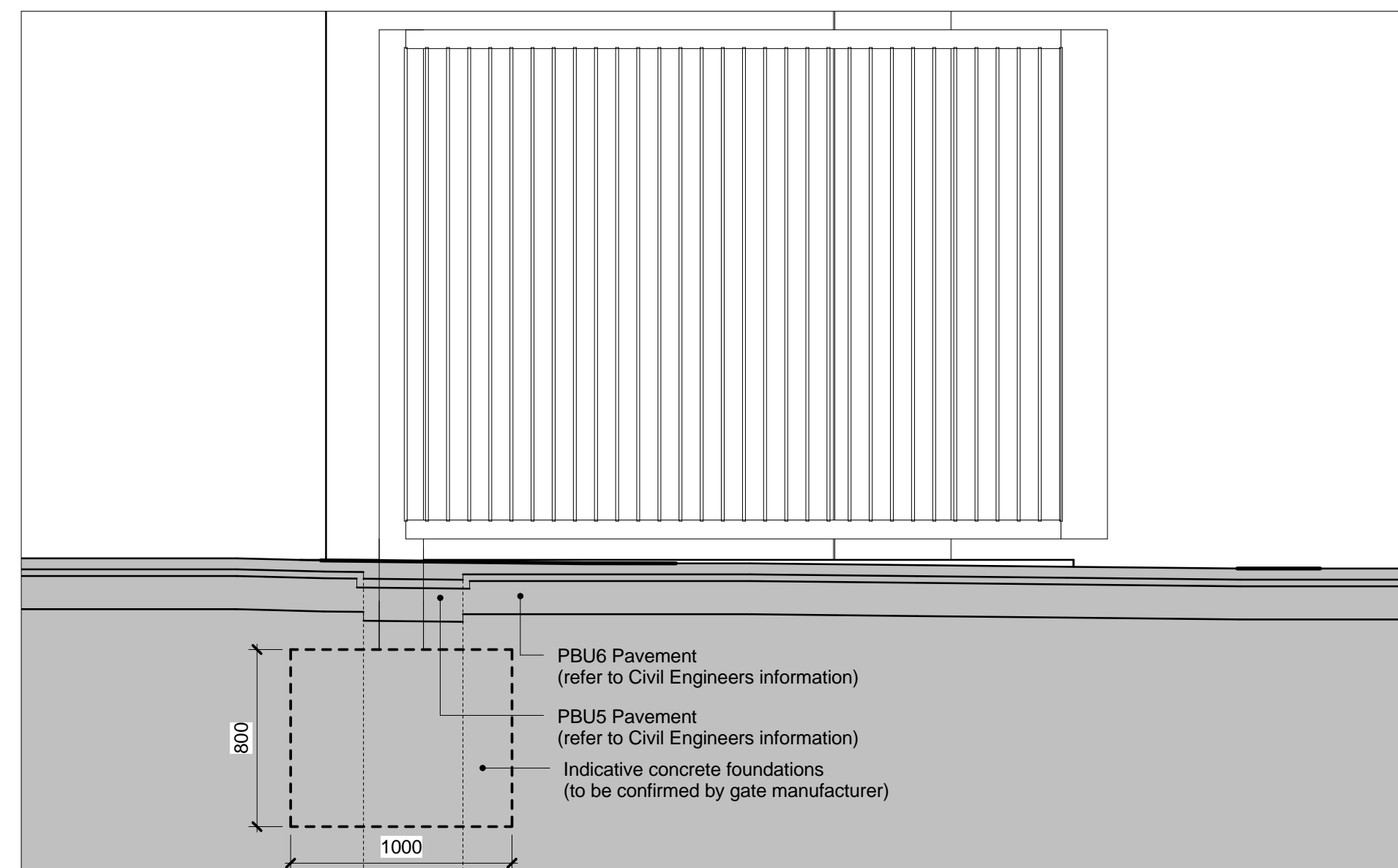
02 Gate 03 Plan 1/25



03 Open Gate 03 Elevation 1/25



04 Closed Gate 03 Elevation 1/25



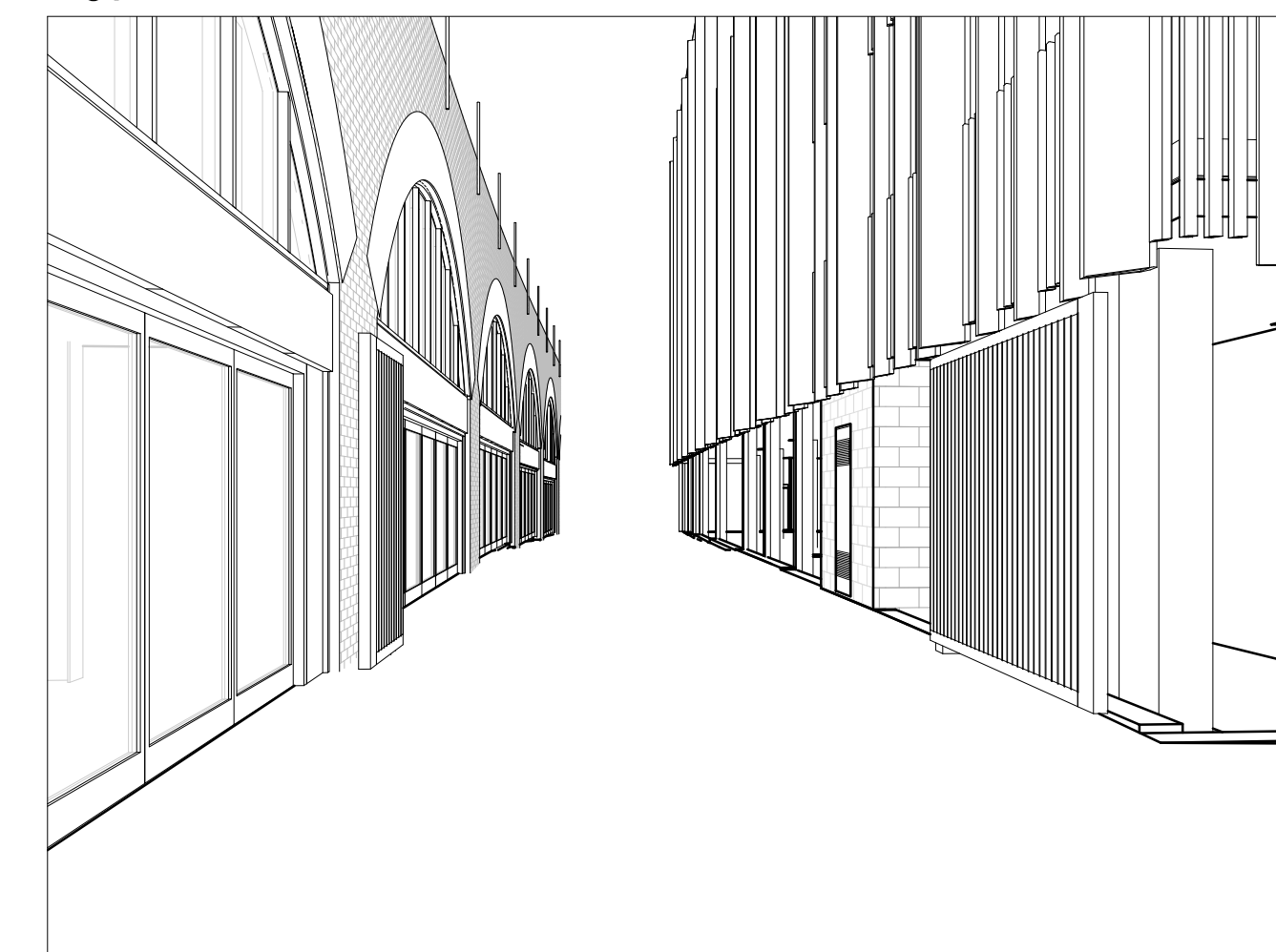
05 Gate 03 Section 1/25



06 Gate 03 view 01 Open



07 Gate 03 view 01 Closed



08 Gate 03 view 02 Open



09 Gate 03 view 02 Closed

**KEY**  
Masterplan: Refer to 14045\_MX\_(XX)\_XXXX for relevant drawings  
Building A: Refer to 14045\_AX\_(XX)\_XXXX for relevant drawings  
Building C: Refer to 14045\_CX\_(XX)\_XXXX for relevant drawings  
Building DE: Refer to 14045\_DE\_(XX)\_XXXX for relevant drawings  
Building WX: Refer to 14045\_WX\_(XX)\_XXXX for relevant drawings  
Viaducts: Refer to 14045\_VX\_(XX)\_XXXX for relevant drawings

For Access & Maintenance refer to:  
Building A: 14045\_A\_V\_RP002  
Building C: 14045\_C\_W\_RP001  
Building DE: 14045\_DE\_RP002  
Building WX: 14045\_C\_W\_RP001  
Viaducts: 14045\_A\_V\_RP002

Notes:  
For Structural information refer to the Structural Engineers information.  
For Below Ground Site/Drainage refer to the Civil Engineers information.  
For Fire Strategy refer to Fire Engineers information.  
For Landscape refer to the Landscape Architects information. All landscape levels to be confirmed by Landscape Architect.

FOR THE GATE SPECIFICATION REFER TO 14045\_V\_SP\_040  
FOR TYPICAL DETAILS REFER TO DRAWING 14045\_MX\_(67)\_1150  
FOR INFORMATION ON SHOOT BOLTS AND GATE STOPS REFER TO DRAWING 14045\_MX\_(67)\_1150

ALL POWER REQUIREMENTS TO BE CONFIRMED BY MEPH ENGINEER AND SUBCONTRACTOR.

SUBCONTRACTOR TO ADVISE ON GATE IRONMONGERY INCLUDING FLOOR LOCATED SHOOT BOLTS AND GATE STOPS.

**NOTES**  
Refer to Schedule MX\_(67)\_1090 and MX\_(67)\_1010.

External levels and build-ups are indicative. Refer to Landscape information and Civil Engineer information.

Gate dimensions are indicative. To be confirmed on site by manufacturer.

Subcontractor to confirm ironmongery and operating mechanisms to meet current legislation and best practice.

**C02 Revision notes:**  
- 50mm offset of gate posts from nearest structure added for tolerance, as agreed with site  
- Indicative coordinates to centre of gate posts added  
- Gate handle shown as agreed with subcontractor

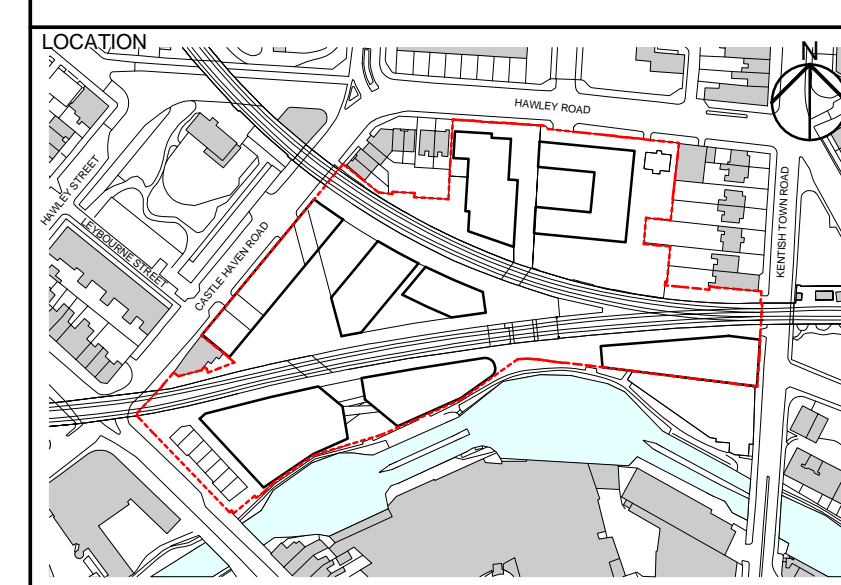
C02	23/03/18	For Construction		
C01	05/05/17	For Construction	F01	17/03/17 For Coordination

REV	DATE	DESCRIPTION
CONSULTANTS		
CLIENT:	Stanley Sidings	
CONTRACTOR:	Mace Group	
STRUCTURAL ENGINEER:	Walsh Group	
MECHANICAL ENGINEER:	Aecom	
COST CONSULTANT:	Gardiner & Theobald	
PROJECT MANAGER:	Gardiner & Theobald	
ACOUSTIC CONSULTANT:	Hoare Lea	
TRANSPORT CONSULTANT:	Arup	
PLANNING CONSULTANT:	Gerald Eve	
LANDSCAPE ARCHITECT:	Fabrik	
CDM CO-ORDINATOR:	Gardiner & Theobald	

- NOTE**
- Do not scale from this drawing.
  - All dimensions to be checked on site by the contractor and such dimensions to be his responsibility. Report all drawing errors, omissions and discrepancies to the architect.
  - This document may be issued in an uncontrolled CAD format to enable others to use it as background information to make alterations and/or additions. In that instance the file will be accompanied by a PDF version. It is for those making such alterations and additions to ensure that they make use of current background information.
  - AHMM Ltd accepts no liability for any such alterations or additions to the background information or arising out of changes to background information which occur prior to alterations of additions being made.

**Note**

All gates to meet accessibility requirements for widths and opening force. All gates within residential circulation routes to be provided with fob access and handles to permit free escape from inside. Handles / mechanisms etc to be suitable for use by people with limited strength and dexterity. Opening / closing force to be within 30N or gate will require automatic opening. All door casing assemblies to be tamper proof and external hinges to be provided with welded cover plates to prevent climbing. Emergency escape sign and statutory signage to be provided to gates within door casing zone. Gate lettering design is indicative only - design TBC. The height of the gates will be reviewed during Stage E to ensure coordination with transom heights of adjacent buildings.



**ALLFORD HALL MONAGHAN MORRIS**  
ARCHITECTS Ltd  
6-23 OLD STREET, LONDON, EC1V 9HL  
TEL 020 7251 5261 FAX 020 7251 5123 WEB WWW.AHMM.CO.UK

job title  
**Camden Lock Village**  
drawing title / location  
**Gate 03**

drawn by	checked	scale	status
MP	AH	As indicated @ A1	For Construction
project	drawing no.		revision
14045	MX_(67)_1115		C02