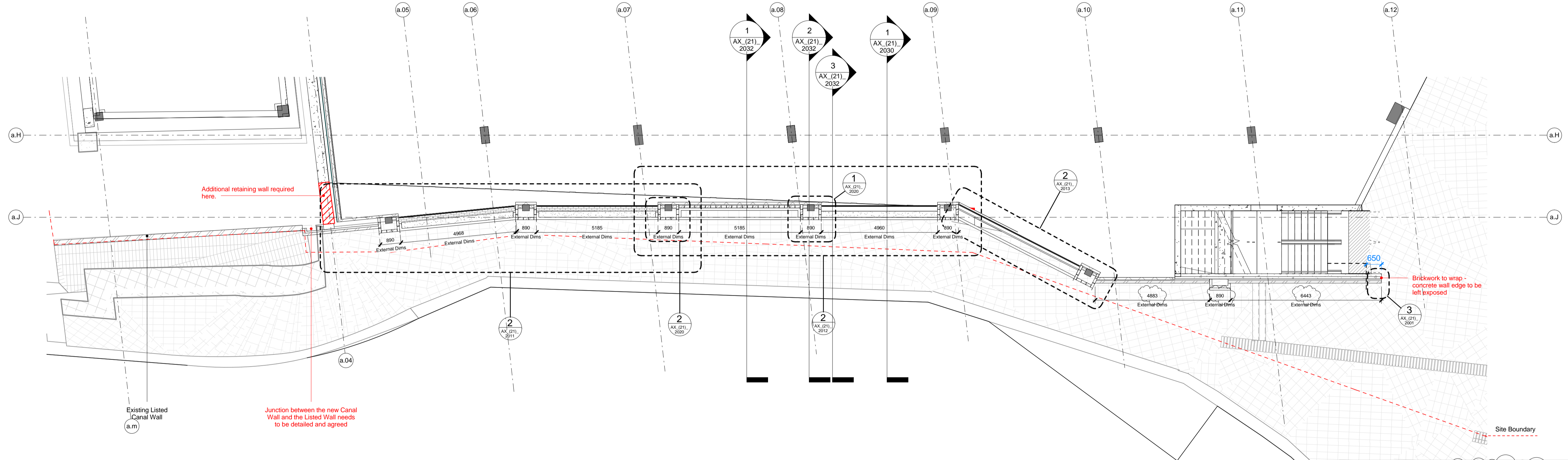
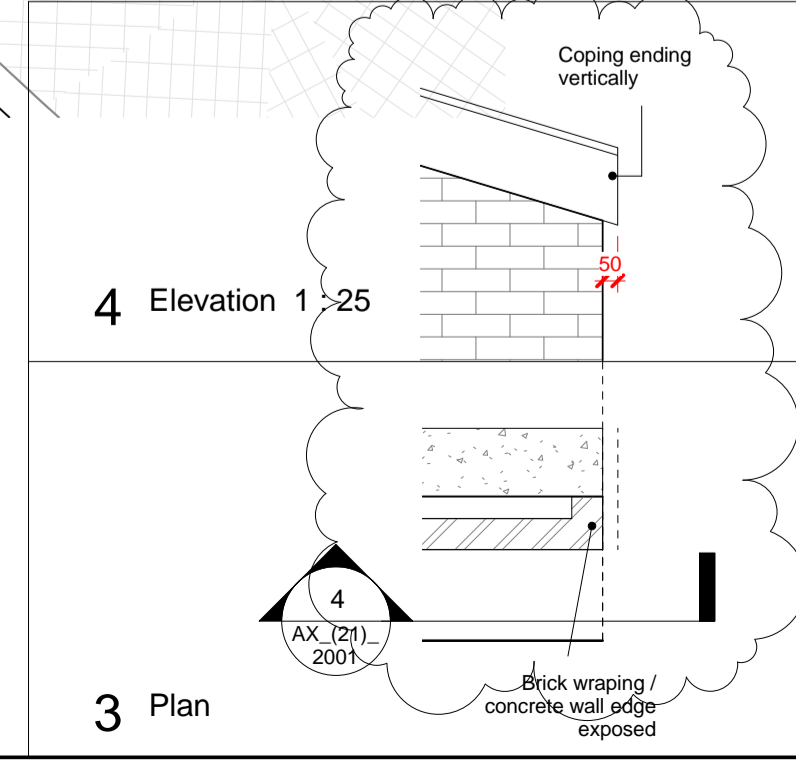


1 South Elevation Building A1



2 A1 Canal Wall Plan



4 Elevation 1-25

3 Plan

KEY
 Site Boundary - - - - -
 KEY
 Refer to (00) series for GA's
 Refer to (05) series for Cores
 Refer to (20) series for Slab setting out
 Refer to (21)_3 series for Second Floor Glazing
 Refer to (21)_4 series for Terracotta Screen
 Refer to (21)_6 series for Third Floor Glazing
 Refer to (24) series for Stairs
 Refer to (31) series for Windows and Louvres
 Refer to (32) series for Doors
 Refer to (40) series for Concrete Scope

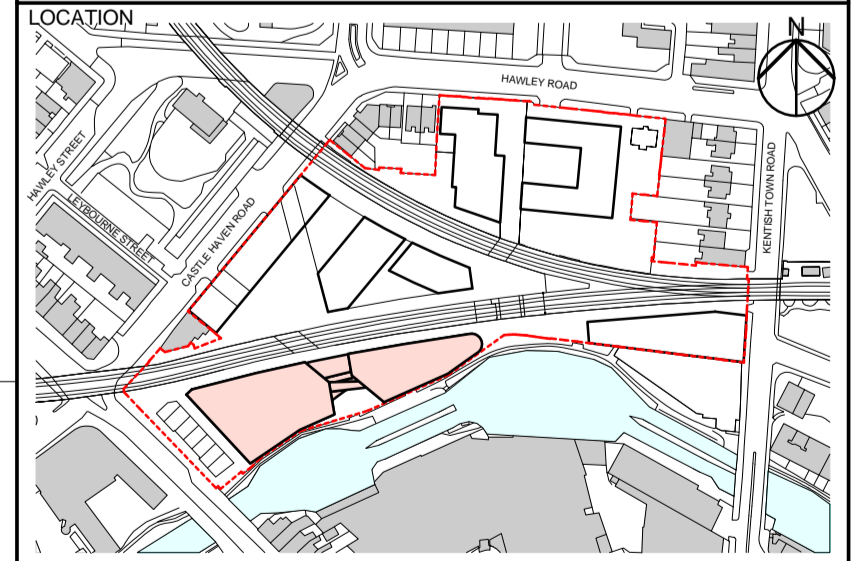
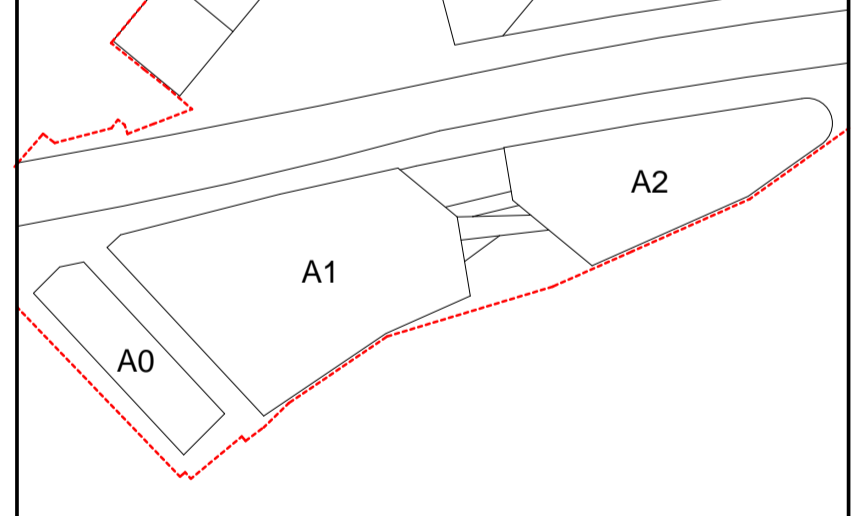
REFER TO SUB-CONTRACTOR INFORMATION
 Performance Requirements: Refer to Specification
 NOTES
 All windows to be inward opening to comply with Access and Maintenance Strategy. Refer to 14045_A_V_RP002.
 ALL DIMENSIONS TO BE CHECKED AND SET OUT ON SITE.
 REFER TO AX_(21)_2001 for SECTION DETAIL REFERENCES.

REV	DATE	DESCRIPTION	F01	28/06/16	Issue For Coordination
C03	05/12/17	For Construction			
C02	16/06/17	For Construction			
C01	02/09/16	For Construction			

CONSULTANTS	
CLIENT:	Stanley Sidings
CONTRACTOR:	Mace Group
STRUCTURAL ENGINEER:	Walsh Group
MECHANICAL ENGINEER:	AECOM
COST CONSULTANT:	Gardiner & Theobald
PROJECT MANAGER:	Gardiner & Theobald
ACOUSTIC CONSULTANT:	Arup
TRANSPORT CONSULTANT:	Arup
PLANNING CONSULTANT:	Gerald Eve
LANDSCAPE ARCHITECT:	Fabrik
CDM CO-ORDINATOR:	Gardiner & Theobald

- NOTE
- Do not scale from this drawing.
 - All dimensions to be checked on site by the contractor and such dimensions to be his responsibility. Report all drawing errors, omissions and discrepancies to the architect.
 - This document may be issued in an uncontrolled CAD format to enable others to use it as background information to make alterations and/or additions. In that instance the file will be accompanied by a PDF version. It is for those making such alterations and additions to ensure that they make use of current background information.
 - AHMM Ltd accepts no liability for any such alterations or additions to the background information or arising out of changes to background information which occur prior to alterations of additions being made.

REFER TO TECHNICAL REFERENCE SHEET FOR SPECIFICATION CLAUSES
 DOCUMENT REFERENCE: 14045_A_TRS



ALFORD HALL MONAGHAN MORRIS
 ARCHITECTS Ltd
 5-23 OLD STREET, LONDON, EC1V 9HL
 TEL 020 7251 5261 FAX 020 7251 5123 WEB WWW.AHMM.CO.UK

job title
CAMDEN LOCK VILLAGE
 drawing title / location
 Canal Wall Plan & Elevation - Building A1

drawn by	checked	scale	status
MP	FG	As indicated @ 1:50 @ A3	For Construction
project	drawing no.	revision	
14045	AX_(21)_ 2001	C03	