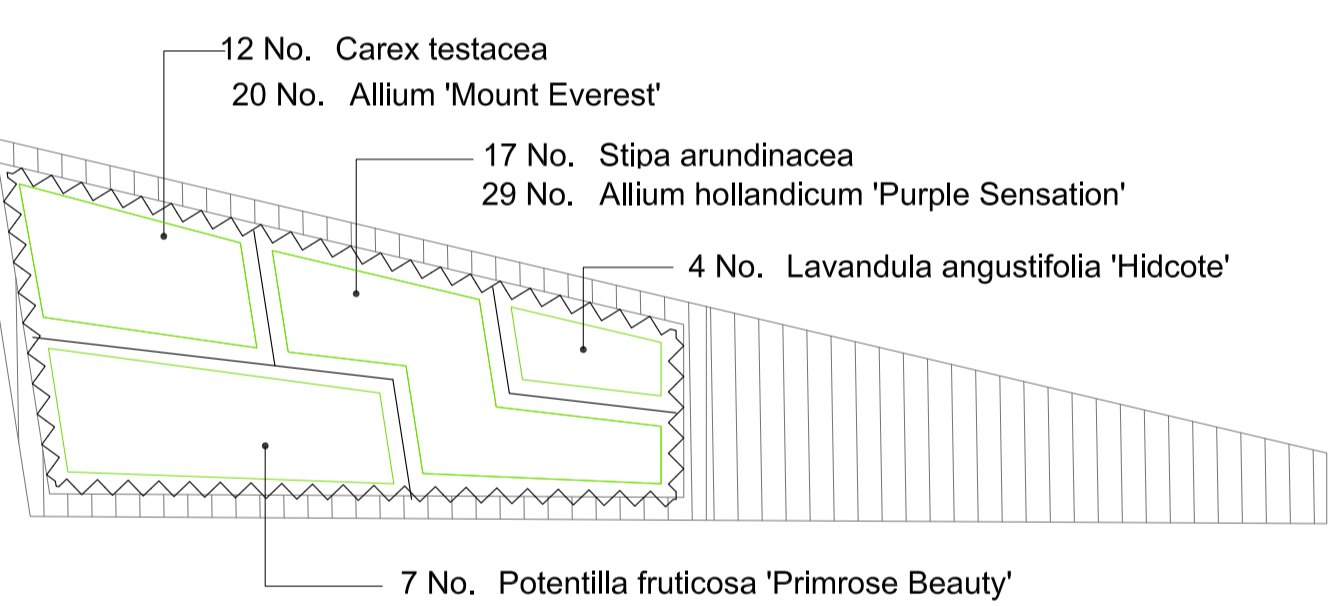
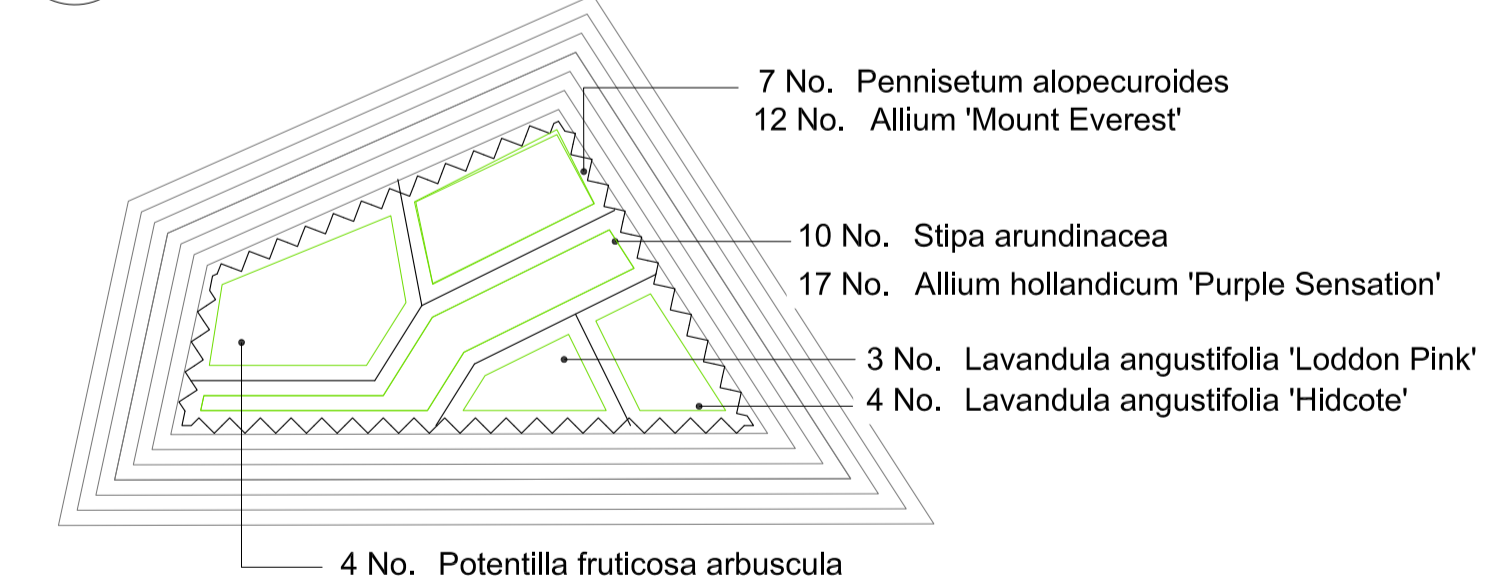


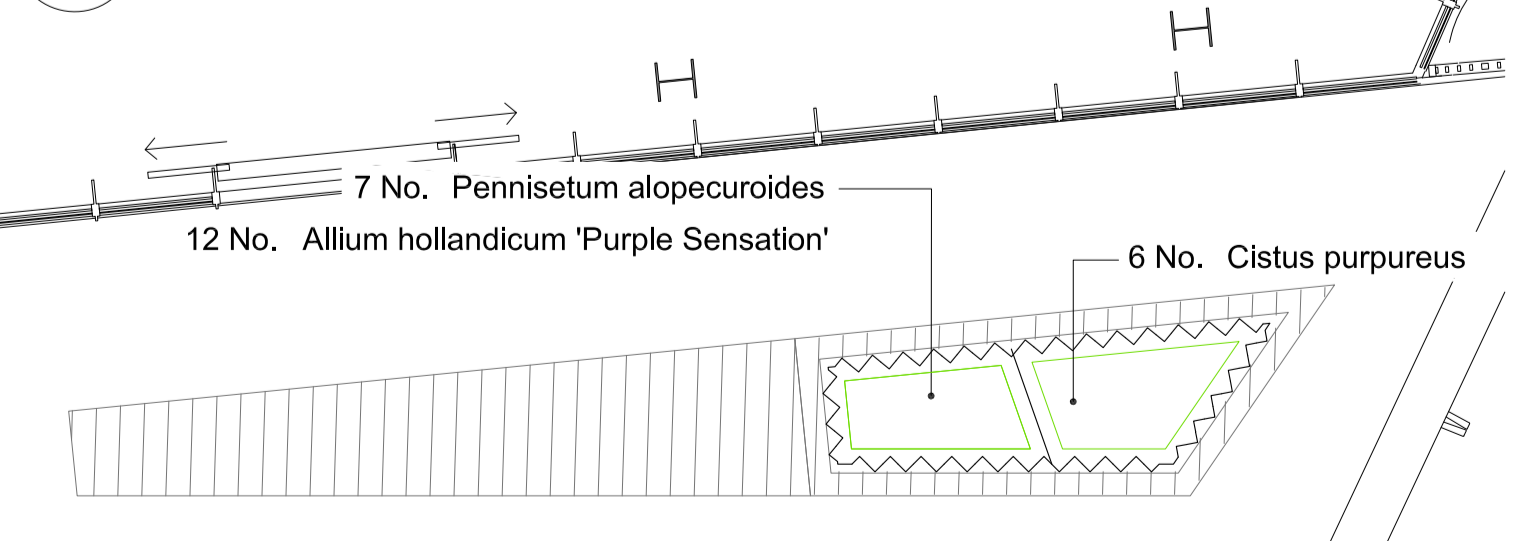
1 Building A: Roof Terrace
SCALE 1:50@A1



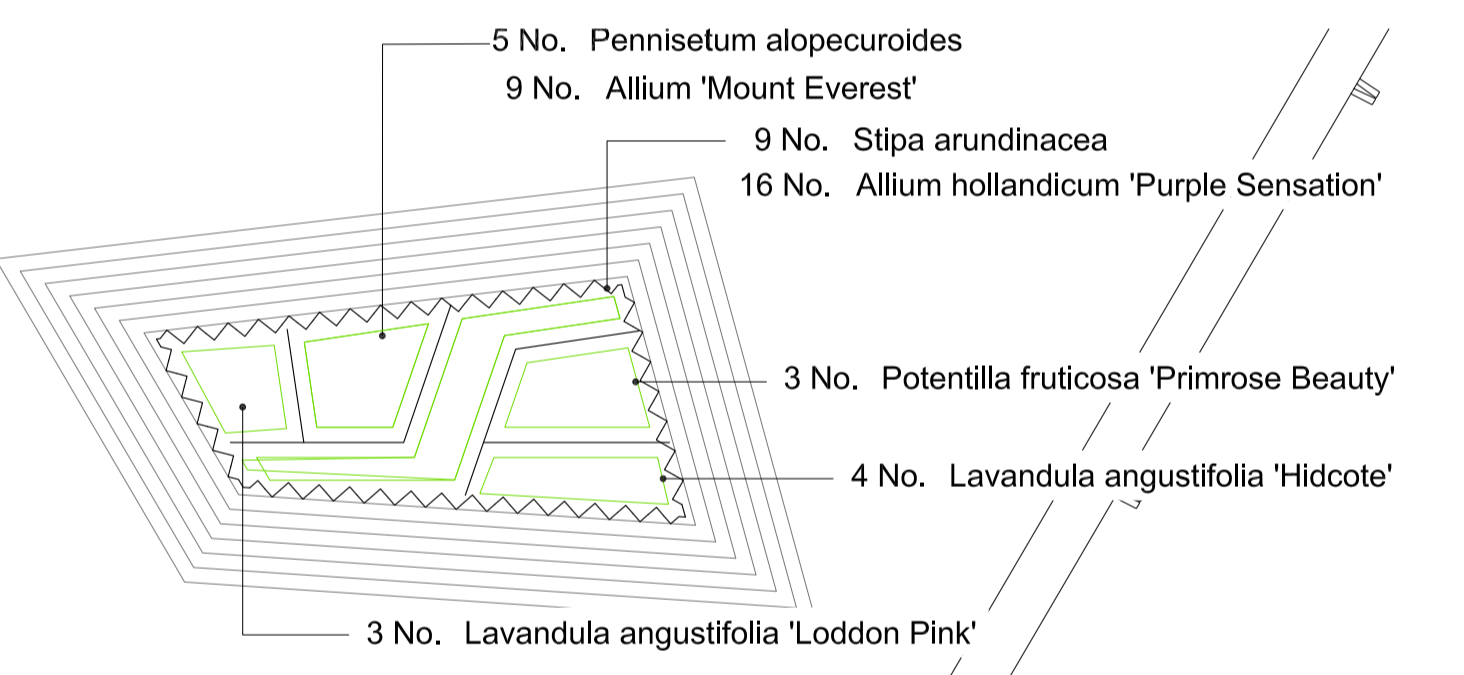
2 Building A: Raised Planter 1
SCALE 1:50@A1



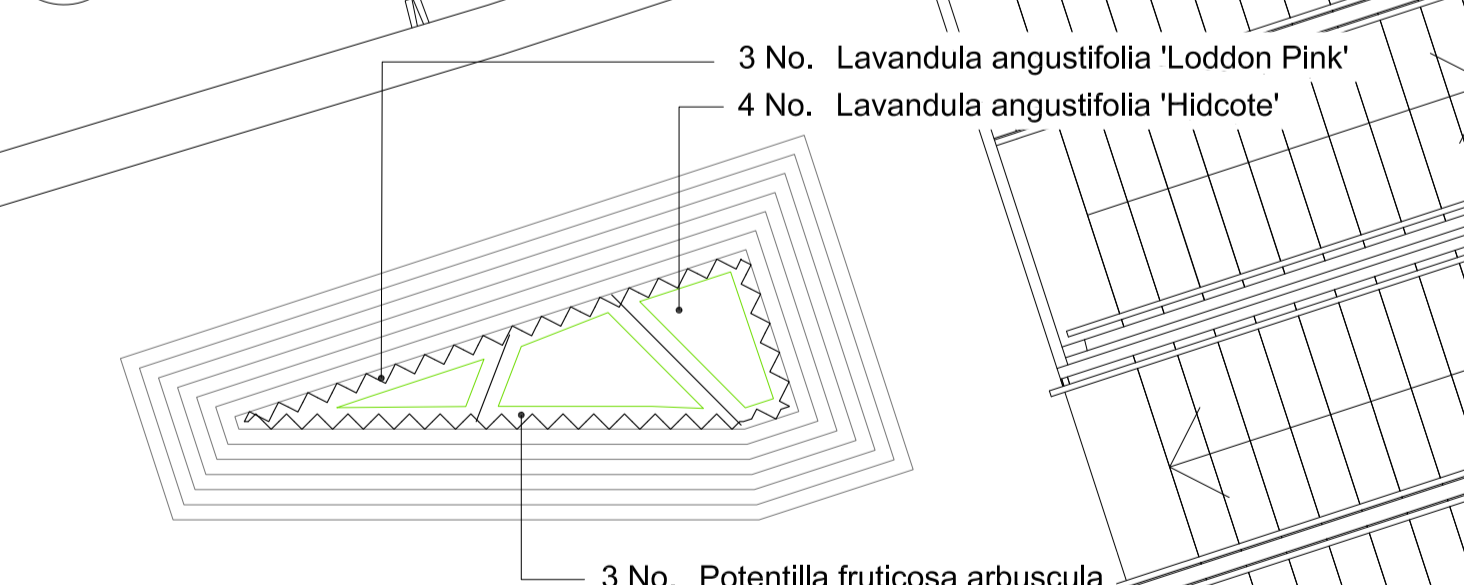
3 Building A: Raised Planter 2
SCALE 1:50@A1



4 Building A: Raised Planter 3
SCALE 1:50@A1



5 Building A: Raised Planter 4
SCALE 1:50@A1



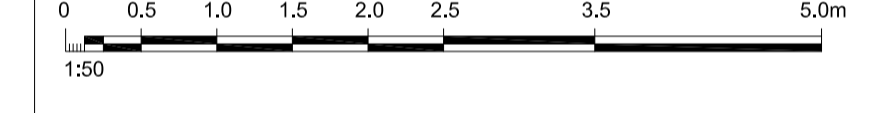
6 Building A: Raised Planter 5
SCALE 1:50@A1

ROOF GARDENS - COMBINED SOFT LANDSCAPE SCHEDULE

Number	Species	Height	Girth	Density	Specification
TREES					
6 No.	Betula utilis jacquemontii (m. stem)	2.5m	Multi-Stem	Counted	Semi-Mature 5x
SHRUBS					
31 No.	Cistus purpureus	C5	40-60cm	5/m ²	Bushy 5/6 brks
94 No.	Euonymus fortunei 'Emerald Gaiety'	C5	60-80cm	5/m ²	Branched
50 No.	Lavandula angustifolia 'Hidcote'	C5	30-40cm	5/m ²	Bushy 7 brks
44 No.	Lavandula angustifolia 'Loddon Pink'	C5	30-40cm	5/m ²	Bushy 7 brks
159 No.	Litopse muscari	C3	30-40cm	9/m ²	Full pot
66 No.	Pachysandra terminalis	C5	30-40cm	7/m ²	Several shoots
9 No.	Perovskia a. 'Blue Spire'	C5-7.5	30-40cm	3/m ²	Several shoots
10 No.	Potentilla fruticosa 'Primrose Beauty'	C5-7.5	30-40cm	3/m ²	Bushy 5 brks
7 No.	Potentilla fruticosa arbuscula	C5-7.5	30-40cm	3/m ²	Bushy 5 brks
64 No.	Rosa 'Kent'	C5	60-80cm	5/m ²	Bushy 4 brks
54 No.	Viburnum davidii	C5	30-40cm	5/m ²	Bushy 4 brks
25 No.	Vinca minor 'Alba'	C5	30-40cm	7/m ²	Several shoots
20 No.	Vinca minor 'Gertrude Jekyll'	C5	30-40cm	7/m ²	Several shoots
HERBACEOUS					
42 No.	Agapanthus 'Jacks Blue'	C5		5/m ²	Full Pot
61 No.	Agapanthus campanulatus albidus	C5		5/m ²	Full Pot
61 No.	Anemone hybrida 'Honorable Jobert'	C5		7/m ²	Full Pot
72 No.	Carex morrowii	C3		7/m ²	Full Pot
65 No.	Carex testacea	C3		7/m ²	Full Pot
62 No.	Geranium 'Johnson's Blue'	C3		7/m ²	Full Pot
56 No.	Geranium renardii	C3		7/m ²	Full Pot
7 No.	Hosta fortunei aureomarginata	C3		7/m ²	Full Pot
8 No.	Nepeta faassenii	C3		7/m ²	Full Pot
CLIMBERS					
12 No.	Clematis 'Betty Corning'	C10		Counted	Several Shoots 3/4 brks
14 No.	Hydrangea anomala subsp. petiolaris	C10		Counted	Several Shoots 5 brks
8 No.	Jasminum officinale 'Argenteovariegatum'	C10		Counted	Several Shoots 5 brks
10 No.	Trachelospermum jasminoides	C10		Counted	Several Shoots 5 brks
BULBS					
141 No.	Allium 'Mount Everest'			12/m ²	Plant in clumps
192 No.	Allium hollandicum 'Purple Sensation'			12/m ²	Plant in clumps
363 No.	Tulipa 'White Triumphator'			12/m ²	Plant in clumps
GRASSES					
138 No.	Pennisetum alopecuroides	C3		7/m ²	Full Pot
150 No.	Stipa arundinacea	C3		7/m ²	Full Pot

Notes

- This drawing is the property of fabrik ltd. It must not be copied or reproduced without written consent.
- Only figured dimensions are to be taken from this drawing. All contractors must visit site and be responsible for taking and checking all dimensions related to the works shown on the drawing.



No.	Date	Reason	Drawn	Checked
P1	23.04.18	Issued for planning approval	MN	MB
C2	28.07.17	Minor changes to planter geometry	CG	NB
C1	12.04.17	Issued for construction	MB	PC

External References:

- 14045_AX_00_1230_iss9_revC01
- 14045_AX_00_1240_iss8_revC01

fabrik

First Floor
4-8 Emerson Street
London
SE1 9DU

T: 0207 620 1453
E: london@fabrikuk.com
W: www.fabrikuk.com

Project
Camden Lock Village, Camden Town, London
for Mace

Drawing
Roof Terraces - Building A0/A1/A2 Detailed Soft
Landscape General Arrangement Plan

Scale	Date	Checked	Drawn
1:50 @ A1	March '17	CB	PC
Drawing No.	Revision		
D2456 L.321	P1		

<input type="checkbox"/> Preliminary	<input type="checkbox"/> Issued for Design/Information
<input checked="" type="checkbox"/> Issued for Planning Approval	<input type="checkbox"/> Issued for Tender
<input type="checkbox"/> Issued for Construction	<input type="checkbox"/> As Built

Drawing sheet size - A1 Copyright Reserved ©