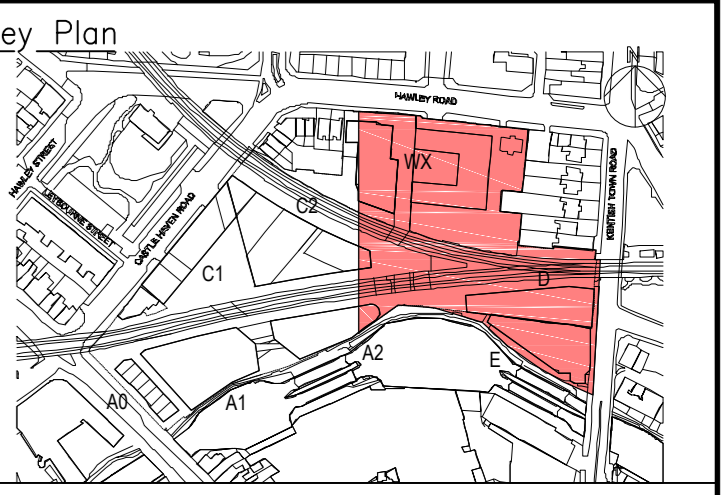
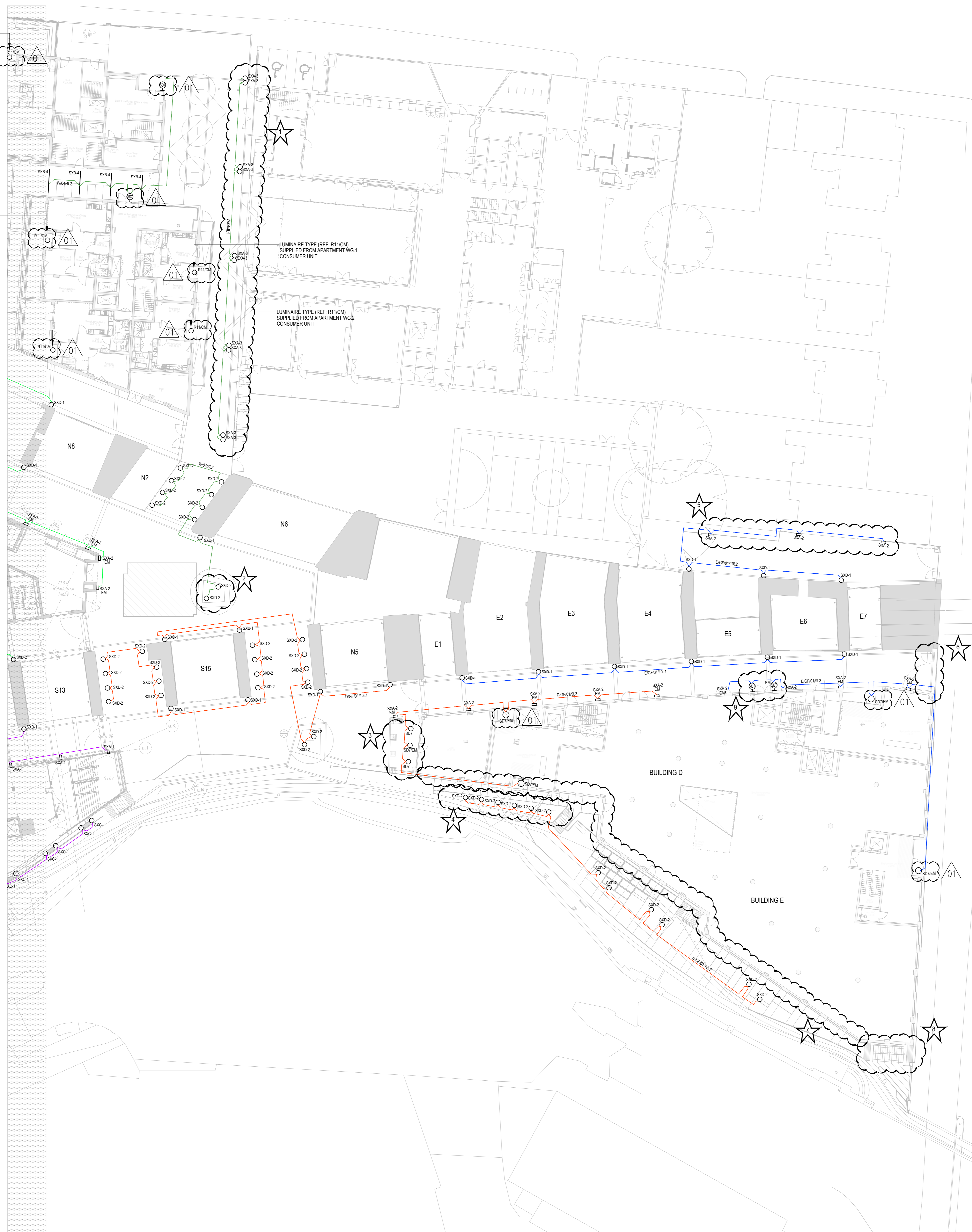


LUMINAIRE TYPE (REF: R11CM)  
SUPPLIED FROM APARTMENT WG.1  
CONSUMER UNIT

LUMINAIRE TYPE (REF: R11CM)  
SUPPLIED FROM APARTMENT WG.4  
CONSUMER UNIT

LUMINAIRE TYPE (REF: R11CM)  
SUPPLIED FROM APARTMENT WG.3  
CONSUMER UNIT

FOR CONTINUATION SEE DRAWING NUMBER: CLV-6000-ZZ-GF-DR-1001



- Notes
- REFER TO LUMINAIRE SCHEDULE FOR LIGHTING FITTING DESCRIPTIONS.
  - SETTING OUT OF ALL LIGHT FITTINGS SHALL BE DETAILED BY THE ARCHITECT AND WHERE REQUIRED, THE LANDSCAPE ARCHITECT.
  - THE LIGHTING CONTROL OF ALL EXTERNAL LUMINAIRES TO BE REVIEWED WITH MACE AND THE DESIGN TEAM.

- ★ LUMINAIRE TYPE (REF: SKA-3) AND LOCATIONS TO BE CONFIRMED BY AECOM VIA MACE.
- ★ THE 2No. UPLIGHTS (REF: SKD-2) WITHIN THIS STARRED LOCATION ARE ADDITIONAL LUMINAIRES. A CLIENT INSTRUCTION SHALL BE NEEDED TO PROCEED, SHOULD THESE LUMINAIRES BE REQUIRED.
- ★ 3 No. DOWNLIGHTS (REF: SKD-2) AT CAFE ENTRANCE ARE ADDITIONAL LUMINAIRES. A CLIENT INSTRUCTION SHALL BE NEEDED TO PROCEED, SHOULD THESE LUMINAIRES BE REQUIRED.
- ★ 6 No. UPLIGHTS (REF: SKD-2) WITHIN STARRED LOCATION ARE ADDITIONAL LUMINAIRES. A CLIENT INSTRUCTION SHALL BE NEEDED TO PROCEED, SHOULD THESE LUMINAIRES BE REQUIRED.
- ★ CONFIRMATION NEEDED WITH REGARDS TO THE LEGALITIES OF INSTALLING THESE LUMINAIRES TO NEIGHBOURS PARTY WALL.
- ★ LIGHTING ASSOCIATED WITH ENTRANCE GATE TO BE CONFIRMED BY MACE.
- ★ REQUIREMENT FOR LIGHTING FIXED TO BUILDING D FRONTAGE ALONG TOWPATH TO BE CONFIRMED BY CRT. A CLIENT INSTRUCTION SHALL BE NEEDED TO PROCEED, SHOULD THESE LUMINAIRES BE REQUIRED.
- ★ REQUIREMENT FOR LUMINAIRES MOUNTED UNDERSIDE OF THE BRIDGE TO BE CONFIRMED BY CRT. A CLIENT INSTRUCTION SHALL BE NEEDED TO PROCEED, SHOULD THESE LUMINAIRES BE REQUIRED.
- ★ REQUIREMENT FOR 2 No. LUMINAIRES (REF: SD7) TO BE CONFIRMED BY OTHERS.

- Legend
- CIRCUITS FED FROM DISTRIBUTION BOARD REF: 'D/GF'
  - CIRCUITS FED FROM DISTRIBUTION BOARD REF: 'E/GF'
  - CIRCUITS FED FROM DISTRIBUTION BOARD REF: 'W/G'

REFERENCE DOCUMENTS USED TO PRODUCE THIS DRAWING

AECOM 41075005-ACM-SM-XX-E-1603 Rev 'C1'			
<b>01 FOR APPROVAL</b>	GW	GW	14/02/18
REVISED TO INCORPORATE DESIGN TEAM COMMENTS			
<b>00 FOR APPROVAL</b>	RC	NB	15/05/17
REVISED TO INCORPORATE DESIGN TEAM COMMENTS			

This document is based on an original copyright work owned by a company in the Grate group of companies (Grate) or a third party (Others) showing the layout of the relevant part of the building and/or the appearance of the relevant part of the building or the relevant part of the building or to be affected and/or fixed to that part. All property rights including copyright in a drawing created by Grate or a third party in relation to the drawing and/or the relevant part of the building or to be affected and/or fixed to that part may not be reproduced, copied, stored in any retrieval system in any form or passed to any third party without the express written consent of both Grate and the relevant Others. Grate does not accept any responsibility or liability for any errors in the dimensions or scale shown in the drawing.



Job  
CAMDEN LOCK VILLAGE

Description  
SITESIDE SPECIALIST LIGHTING LAYOUT  
Sheet 2 of 2

Draw. No.	Rev	Scale
CLV-6000-E-ZZ-GF-DR-1002	01	1:200 @ A0
Date	Drawn	Checked
MAY '17	NB	R Clarke



2 Regents Wharf  
All Saints Street  
London N1 9PL  
Tel: 020 7837 6433  
Fax: 020 7520 8100  
email: csk@gratte.com

PROJECT NUMBERS  
GBL 08133  
DWA 8059

Building services  
engineers