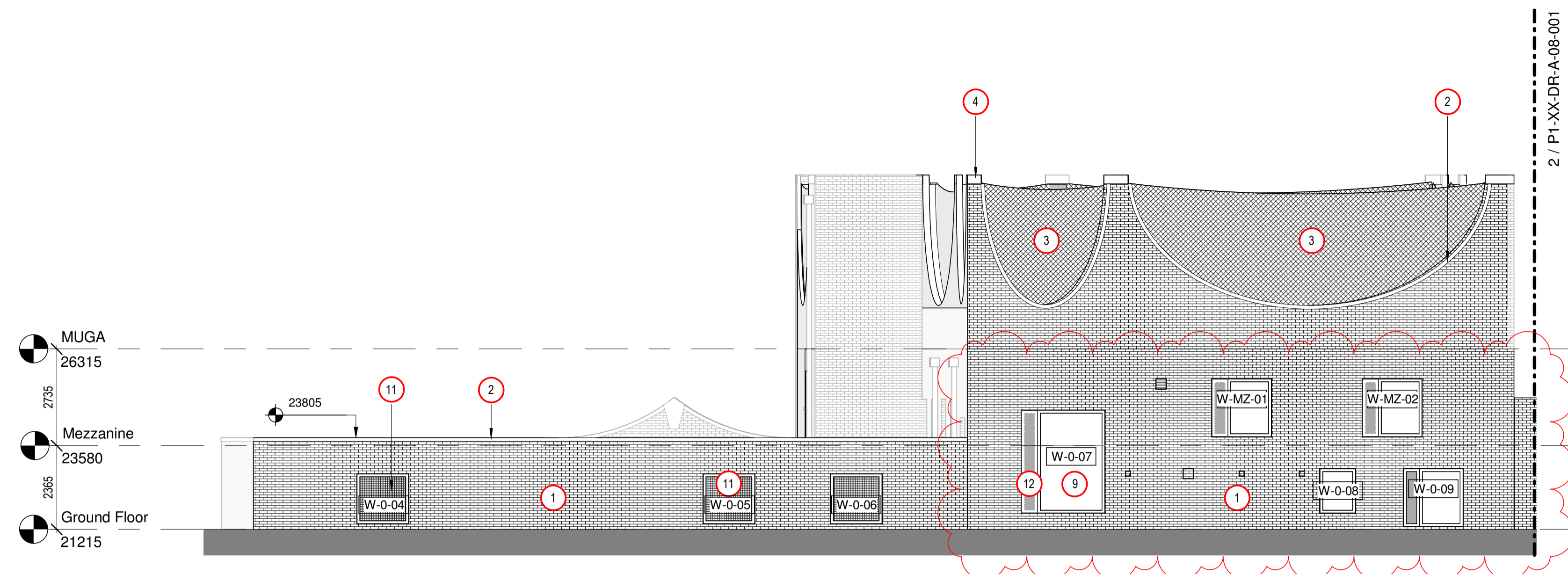
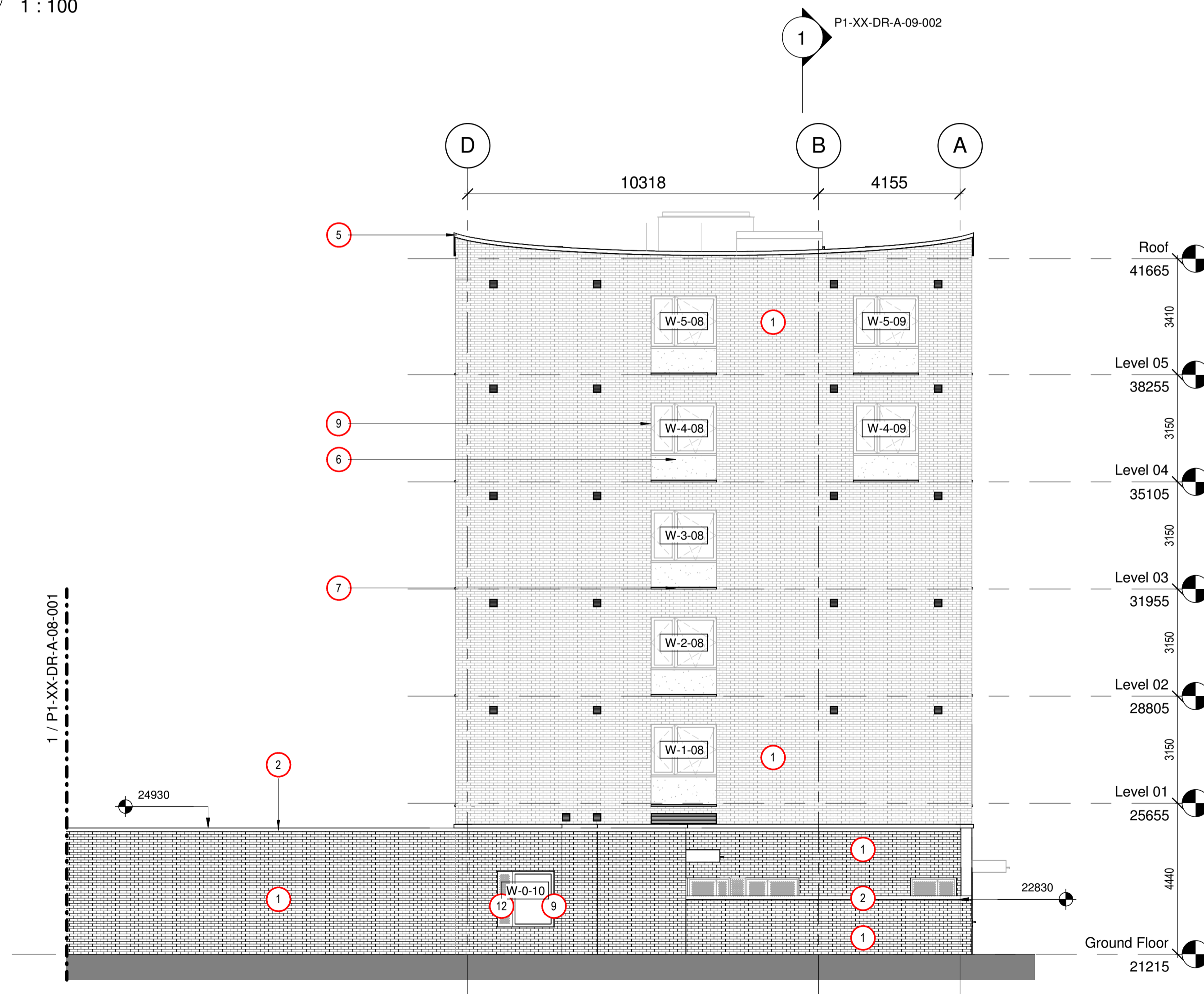


NOTE

- For movement joint locations and bed joint reinforcement refer to Structural Engineers drawings.
- For locations of brick supports refer to 09 series sections and relevant details.



**1 GA North Elevation Part 1**  
1 : 100



**2 GA North Elevation Part 2**  
1 : 100

MATERIALS KEY

To be read in conjunction with drawings A-08-001 - 007

- |   |  |
|---|--|
| 1 Brickwork (F10/120)   | 12 Laser cut powder coated metal screen to vent                    |
| 2 Header brick capping component (F10/120)                            | 13 Perforated powder coated aluminium screens to vent (L20/240)    |
| 3 Sports net (Q52/645) suspended on tension rods (see SE information) | 14 Powder coated metal balustrade (L30/565)                        |
| 4 Precast concrete (F31/110)  | 15 Precast concrete projecting balcony (F31/110)                   |
| 5 Precast concrete coping (F31/110)                                   | 16 Precast concrete capping stone (F31/110)                        |
| 6 Precast concrete recessed panel (F31/110)                           | 17 Precast concrete plinth (F31/110)                               |
| 7 Precast concrete sill (F31/110)                                     | 18 Metal gate with obscured wired glass (L20/650)                  |
| 8 Powder coated metal window (L10/315)                                | 19 Powder coated aluminium door with large glazing panel (L20/240) |
| 9 Aluminium windows (L20/315)   | 20 Timber fence  |
| 10 Aluminium windows (L20/240)  | 21 Metal downpipes (R10/115)                                       |
| 11 Metal window frame with obscured wired glass (L20/650)             |  |

rev	description	drawn	checked	date
2	Vents added to Elevation as per ER's	GB	NF	25/04/18
1	First Construction Issue			13/04/18

status: CONSTRUCTION

This drawing is protected under The Copyright, Designs and Patents Act 1988. Do not scale. Figured dimensions only are to be taken from this drawing. All dimensions are to be checked on site before any work is put in hand. If in doubt, ASK.

**P T A L**

PETER TAYLOR ASSOCIATES LIMITED  
7 CURZON STREET  
MAYFAIR LONDON W1J 5HG

TELEPHONE + 44 (0)20 7495 3837  
FACSIMILE + 44 (0)20 7493 3475  
EMAIL MAYFAIR@PTAL.CO.UK  
WWW.PTAL.CO.UK

client: Neilcott Construction Group  
Excel House  
Cray Avenue  
Orpington  
Kent  
BR5 3ST



project: Central Somers Town  
Plot 1

title: GA North Elevation

scale: As indicated @ A1  
date: 16/10/17  
drawn: ST  
checked: NF

Project ID: 170044 Originator: PTA Drawing No: P1-XX-DR-A-08-001 revision: C2

