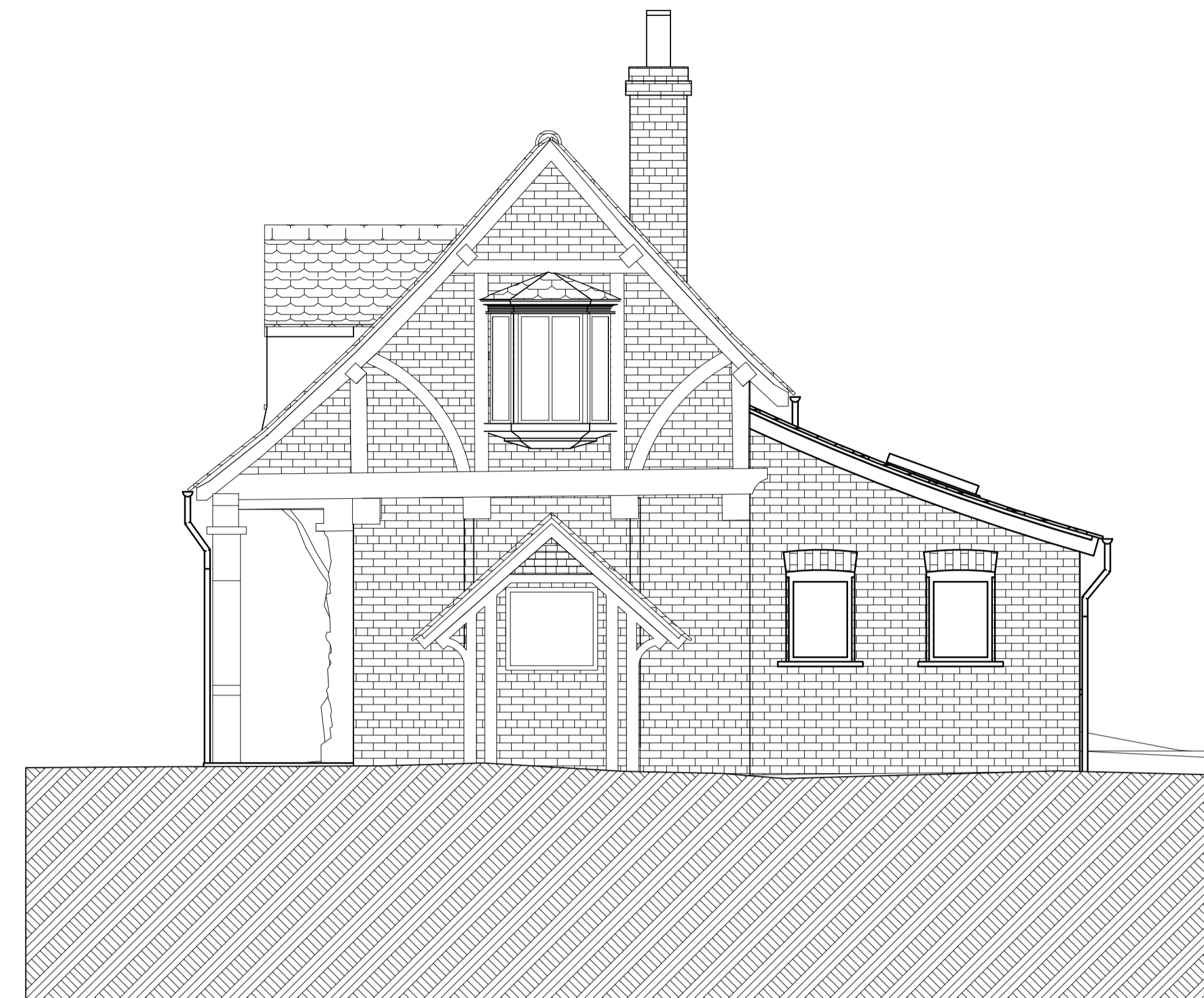




**A** West Elevation Gate House



**B** South Elevation Gate House



**C** North Elevation Gate House



**D** East Elevation Gate House

**Notes**

Positions shown on this drawing are indicative only and should be taken from designers layouts and elevations.

**Copyright ©**

This drawing and the copyright therein are the property of Ideaworks Ltd. This drawing must not be used, copied or otherwise duplicated without prior written permission of Ideaworks Ltd and no articles must be manufactured in accordance with this drawing or used other than permitted by Ideaworks Ltd.

**Key to lighting symbols**

| Interior              | Exterior  |
|-----------------------|---|
| Round Pendant         | Spike Light   |
| Square Pendant        | Underwater Light                                    |
| Round downlight       | Up-light  |
| Square downlight      | Surface mounted light                               |
| Twin square downlight | Wall light  |
| Miniature downlight   | Linear LED  |
| Up-light              | Lantern   |
| Surface mounted light | Bollard   |
| Wall light            | Floor washer  |
| Picture light         | Lamp post   |
| Tread light           | Tread light   |
| Local sump outlet     | Provisional Feed                                    |
| Local power outlet    | <b>Additional</b>                                   |
| Vertical linear LED   | Section Tag<br>1 - Detail number<br>2 - Detail page |
| High Level linear LED | Callout Tag<br>1 - Detail number<br>2 - Detail page |
| Low level linear LED  | Center line   |
| Utility light         | Lighting control panel                              |
| Reading light         | Decorative light                                    |
| Provisional Feed      |   |
| Local door contact    |   |
| Locally switched PIR  |   |
| Local light switch    |   |
| <b>Elevations</b>     |   |
| Up-light              |   |
| Surface mounted light |   |
| Tread Light           |   |
| Decorative wall light |   |
| Decorative pendant    |   |

**Revision History**

| Rev | Date       | Description     | By | Ch. |
|-----|------------|-----------------|----|-----|
| FI  | 29/01/2018 | For information | MS | FNP |



Ideaworks Limited  
206 Great Portland Street  
London W1W 5QJ

t +44 (0)20 3668 9870  
e info@ideaworks.co.uk  
w ideaworks.co.uk

|               |                                |
|---------------|--------------------------------|
| Size          | Scale (do not scale for print) |
| A1            | 1:50                           |
| Drawn / date  | Signed / date                  |
| MS 29/01/2018 | FNP 29/01/2018                 |

Project  
**Athlone House**

Description  
Elevations - Gate House  
Lighting Layout

DWG no. 4395-523

Rev. Pg.  
FI 1/1