



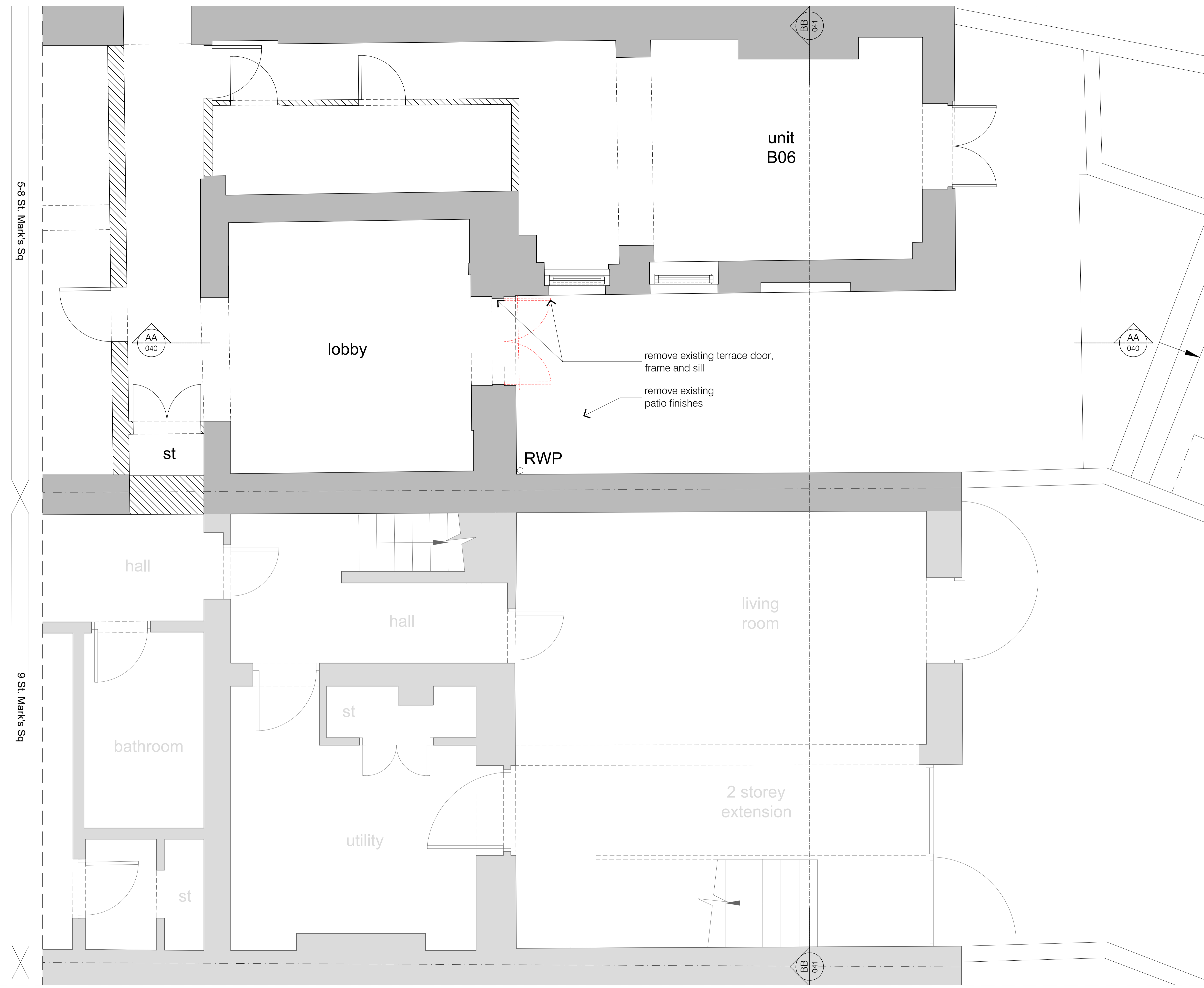


GENERAL NOTES

Note: All original features such as cornices & skirting boards to be retained throughout unless otherwise noted


KEY:

-  Existing original walls to be retained
-  Existing modern fabric to be retained
-  Modern fabric to be demolished/removed
-  Original fabric to be demolished/removed



B	2018.04.26	db	lg	key revision
A	2018.04.19	db	lg	9 St. Marks Square differentiated
rev	date	drawn	checked	description

 modular studio
5a Iliffe Yard
London SE17 3QA
t: +44 (0)20 7193 1717
e: www.modular-studio.co.uk

client:  SAV GROUP
project address: Vernon Hse, 5-8 St. Marks Sq, NW1 7TN
drawing title: Existing Lower Ground Floor Plan showing demolition
scale: 1:25 @ A1 / 1:50 @ A3