
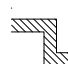

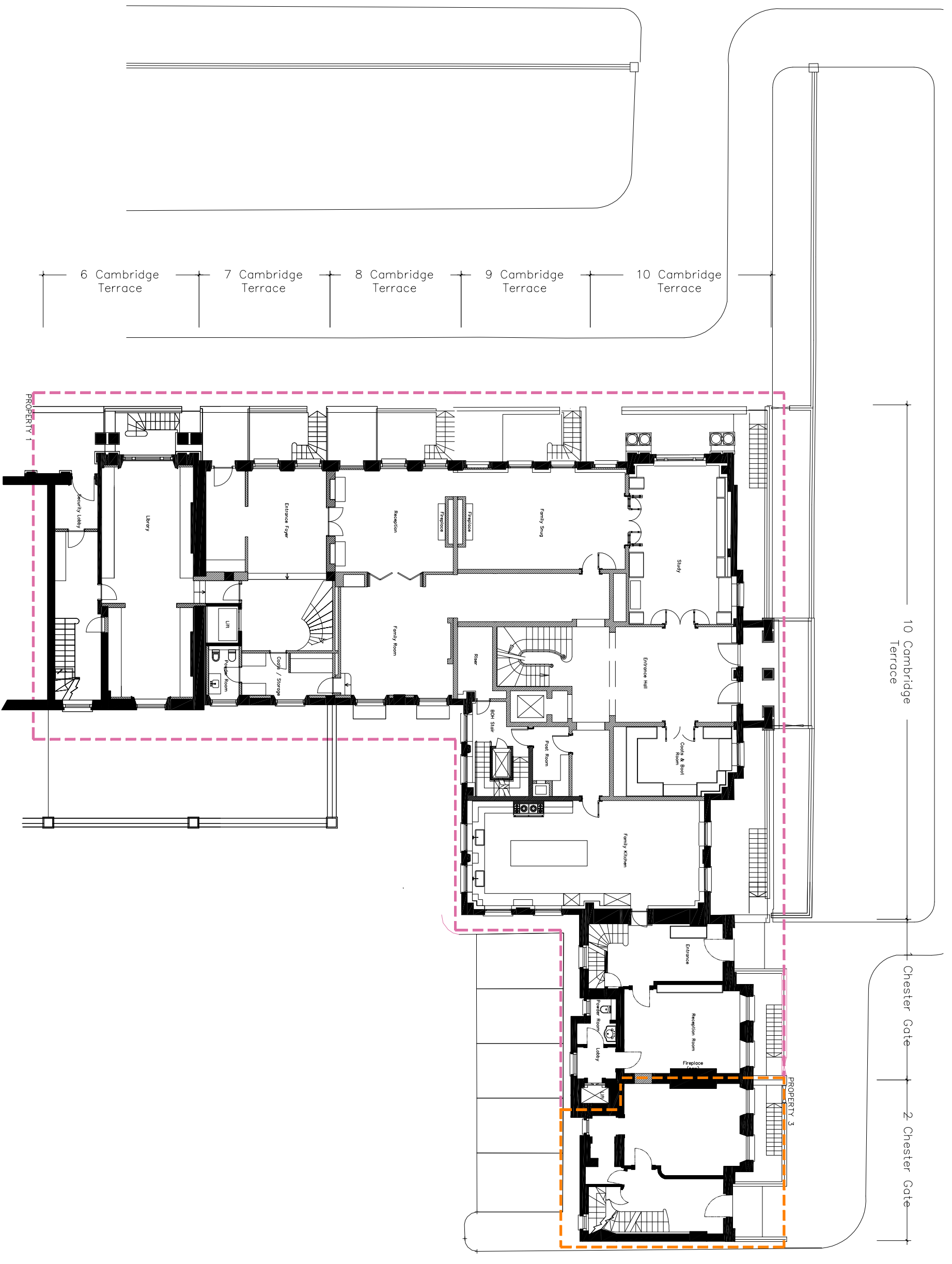


DISCLAIMER: In accordance with our duties under the Misrepresentation Act 1967 and the Misrepresentation Act 1991, these plans are not intended to constitute part of an offer of contract. No other contractual conditions, terms, exclusions, limitations or kind provided by CPC London or its Agents, whether written or verbal, shall apply. "Information" may be relied upon as a statement of representation, nor its Agents have any authority to make any representation or warranty concerning any information or plan in the part of CPC London, its Agents or the seller. Any plans, photos, and are indicative and cannot be guaranteed to represent the complete scheme. Any areas, measurements or distances given are approximate only. Any dimensions are approximate only and may be subject to variations or change. It is not possible to locate foundations to or use of any part of the property. **Liability is not accepted for any loss or damage of any kind, whether direct or indirect, arising from the use of any part of the property. All rights reserved to CPC London.**

--- PROPERTY 1
--- PROPERTY 2
--- PROPERTY 3
 EXISTING WALL
 PROPOSED WALL
 METRES
0 1 2 3 4 5

REV#	BY	DATE	DESCRIPTION

PROJECT CODE: Quod
PROJECT TITLE: 6 – 10 Cambridge Terrace and 1–2 Chester Gate Regents Park London NW1
DRAWING TITLE: GROUND FLOOR PROPOSED
DRAWN BY: NC
CHECKED BY: NC
ISSUED FOR: PLANNING
SCALE: 1:200 @ A3 APRIL 18
DRAWING NO: 639-2-003
REVISION: E



10 Cambridge Terrace

Chester Gate

2 Chester Gate

PROPERTY 1

PROPERTY 3

PROPERTY 2

6 Cambridge Terrace

7 Cambridge Terrace

8 Cambridge Terrace

9 Cambridge Terrace

10 Cambridge Terrace

Family Study

Reception

Entrance Foyer

Family Room

Study

Entrance Hall

Family Kitchen

Kitchen

Living Room

Reception Room

Firezone

Lobby

Lift

Paper Room

Coat / Storage

Security Lobby