

EXISTING TREES AND PLANTING

TOTAL TREES 25
TOTAL PLANTING 3

Total trees to be retained 7

- T1 London Plane.
- T2 London Plane.
- T20 Sycamore.
- T21 Oak.
- T22 Horse Chesnut.
- T23 Lime.
- T24 Lime.

Trees to be replaced 2

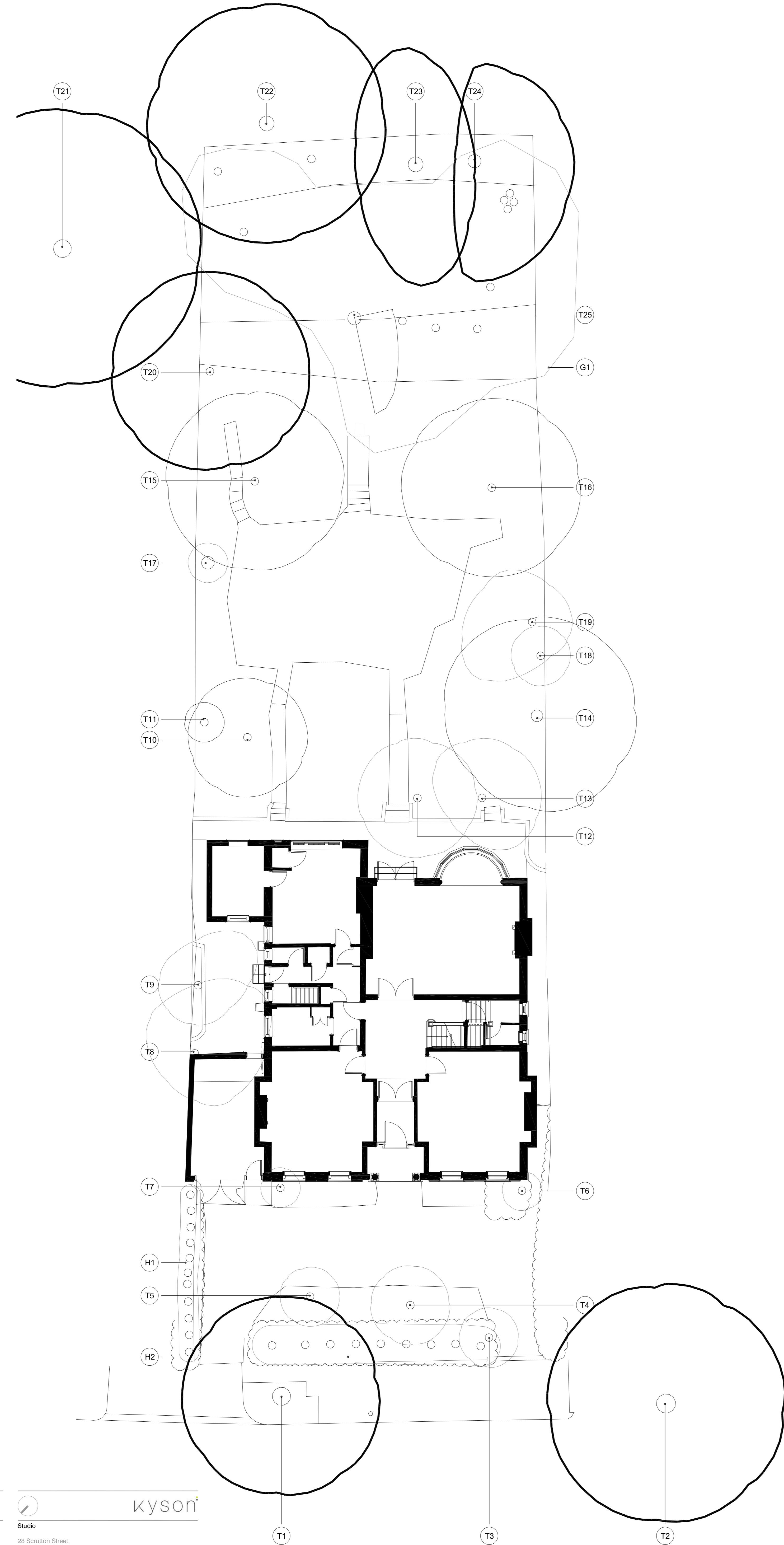
- T15 Yew. The tree has outgrown its position. Replaced with Mangolia 'Susan' Feathered, 3.0m high
- T16 Yew. The tree has outgrown its position. Replaced with Mangolia 'Susan' Feathered, 3.0m high

Trees to be removed 16

- T3 Oak. Removed to suit proposals.
- T4 Elder. Removed to suit proposals.
- T5 Elder. Removed to suit proposals.
- T6 Pyracantha. Removed to allow build works.
- T7 Pyracantha. Removed to allow build works.
- T8 Goat Willow. Removed to allow build works.
- T9 Elder. Removed to allow build works.
- T10 Birch. Removed to allow build works.
- T11 Cherry. Fell due to condition.
- T12 Cherry. Removed to allow build works.
- T13 Rhododendron. Removed to allow build works.
- T14 Cherry. Fell due to condition..
- T17 Oak. Remove to allow build works.
- T18 Sycamore. Removed to allow build works.
- T19 Crab Apple. Removed to allow build works.
- T25 Crab Apple. Fell due to condition.

Total planting to be removed 3

- H1 Privet. Removed to suit proposals.
- H2 Privet. Removed to suit proposals.
- G1 Group. Removed to suit proposals.



Tree Survey

PROPOSED TREES AND PLANTING

TOTAL TREES 21
TOTAL PLANTING 9

Total Proposed new trees 12

- T26 Magnolia 'Gallisonensis' Standard Tree (1.8m clear stem) 3.5m high.
- T27 Magnolia 'Gallisonensis' Standard Tree (1.8m clear stem) 3.5m high.
- T28 Liquidamber styraciflua 'Worplesdon' Standard Tree, 3.0m high.
- T29 Acer palmatum 'Bloodgood' Feathered, 3.0m specimens.
- T30 Acer palmatum 'Bloodgood' Feathered, 3.0m specimens.
- T31 Amelanchier 'Ballerina' Feathered Multi-stem specimens, 3.0m high.
- T32 Amelanchier 'Ballerina' Feathered Multi-stem specimens, 3.0m high.
- T33 Prunus 'Tai Haku' Standard, 3.0m high.
- T34 Acer palmatum 'Dissectum Atropurpureum', 1.0m high specimens (4 in containers)
- T35 Acer palmatum 'Dissectum Atropurpureum', 1.0m high specimens (4 in containers)
- T36 Acer palmatum 'Dissectum Atropurpureum', 1.0m high specimens (4 in containers)
- T37 Acer palmatum 'Dissectum Atropurpureum', 1.0m high specimens (4 in containers)

Total trees to be retained 7

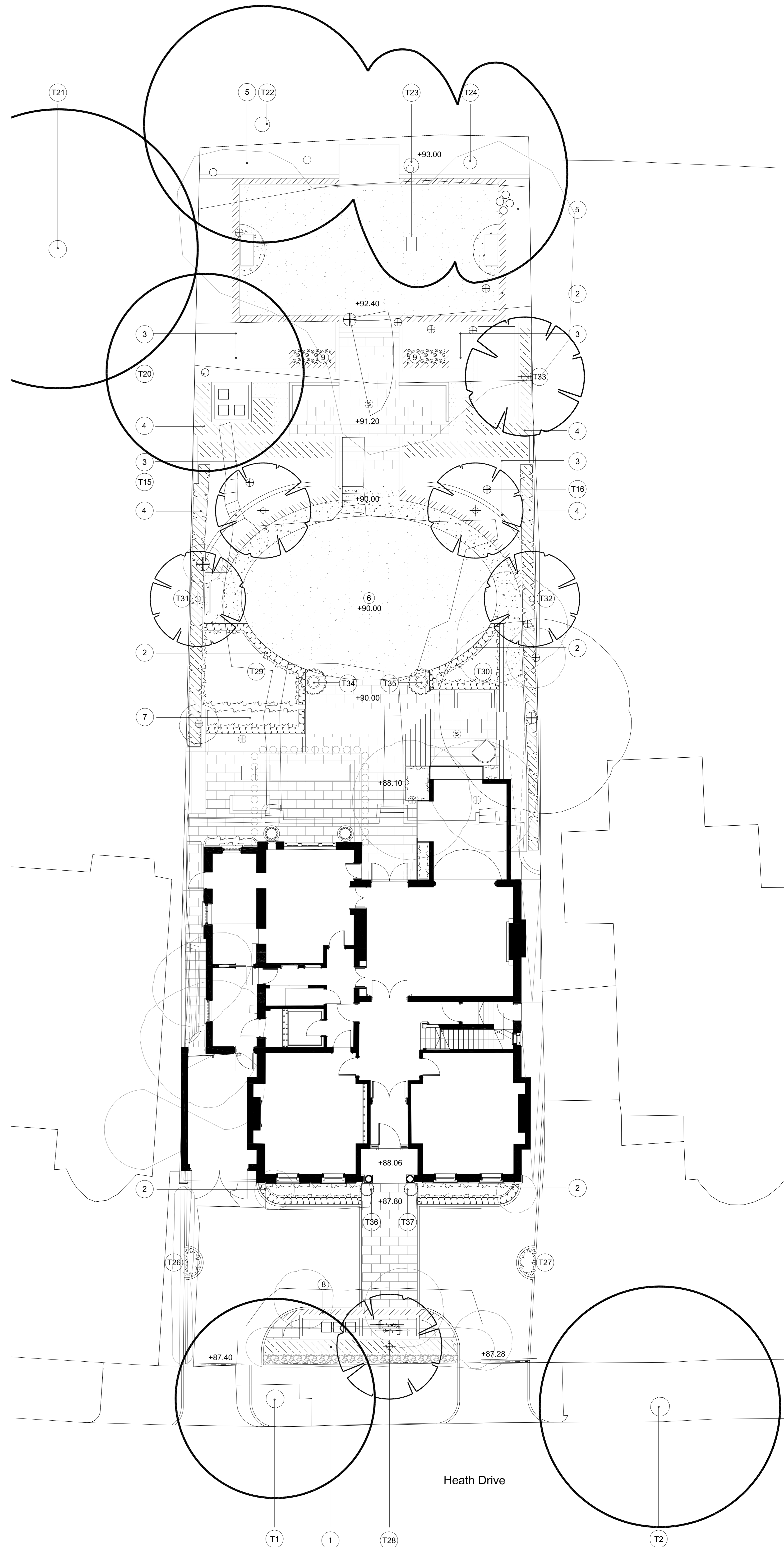
- T1 London Plane.
- T2 London Plane.
- T20 Sycamore.
- T21 Oak.
- T22 Horse Chesnut.
- T23 Lime.
- T24 Lime.

Total trees to be replaced 2

- T15 Yew. The tree has outgrown its position. Replaced with Mangolia 'Susan' Feathered, 3.0m high
- T16 Yew. The tree has outgrown its position. Replaced with Mangolia 'Susan' Feathered, 3.0m high

Total new planting 9

- 1 New hedge.
- 2 Box hedge (H2).
- 3 Tiered planters.
- 4 Bay hedge (H3) 2.5m high.
- 5 Planting (PL1).
- 6 Formal lawn.
- 7 Herb garden.
- 8 Jasmine hedge.
- 9 Box hedge edged ornamental vegetable production beds.



Heath Drive

Proposed Landscape Plan

SCALE - 1:200 0 2.5 5 10 15 25m

FOR INFORMATION

Rev: Comments: By: Date:

Client: Sarah Bard

Project Title: 24 Heath Drive, Hampstead, London, NW3

Drawing Title: Tree Survey & Landscape Design

Studio
 28 Scrutton Street
 London
 UK
 EC2A 4RP

T: +44(0) 20 7247 2462
 E: enquiries@kyson.co.uk
 W: www.kyson.co.uk

Scale: 1:100@AD Date: APR 18 Drawn: - Checked: - Project No.: 508-16 Drawing No.: - Revision: -

Do not scale this drawing. All dimensions must be checked on site. All rights reserved. No reproduction in any material form is permitted without consent.