

EXTERNAL LIGHT FITTINGS

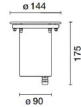
- ⓕ Low level external light fitting. See specification for details.
- ⓗ Low level external light fitting. See specification for details.
- Ⓢ Up lighting external light fitting. See specification for details.
- Ⓤ External light fitting. See specification for details.



- ⓕ Hunza Tier light (260mm) bronze
- 510lm
 - 4000K
 - IP66
 - size: 25(dia.) x700



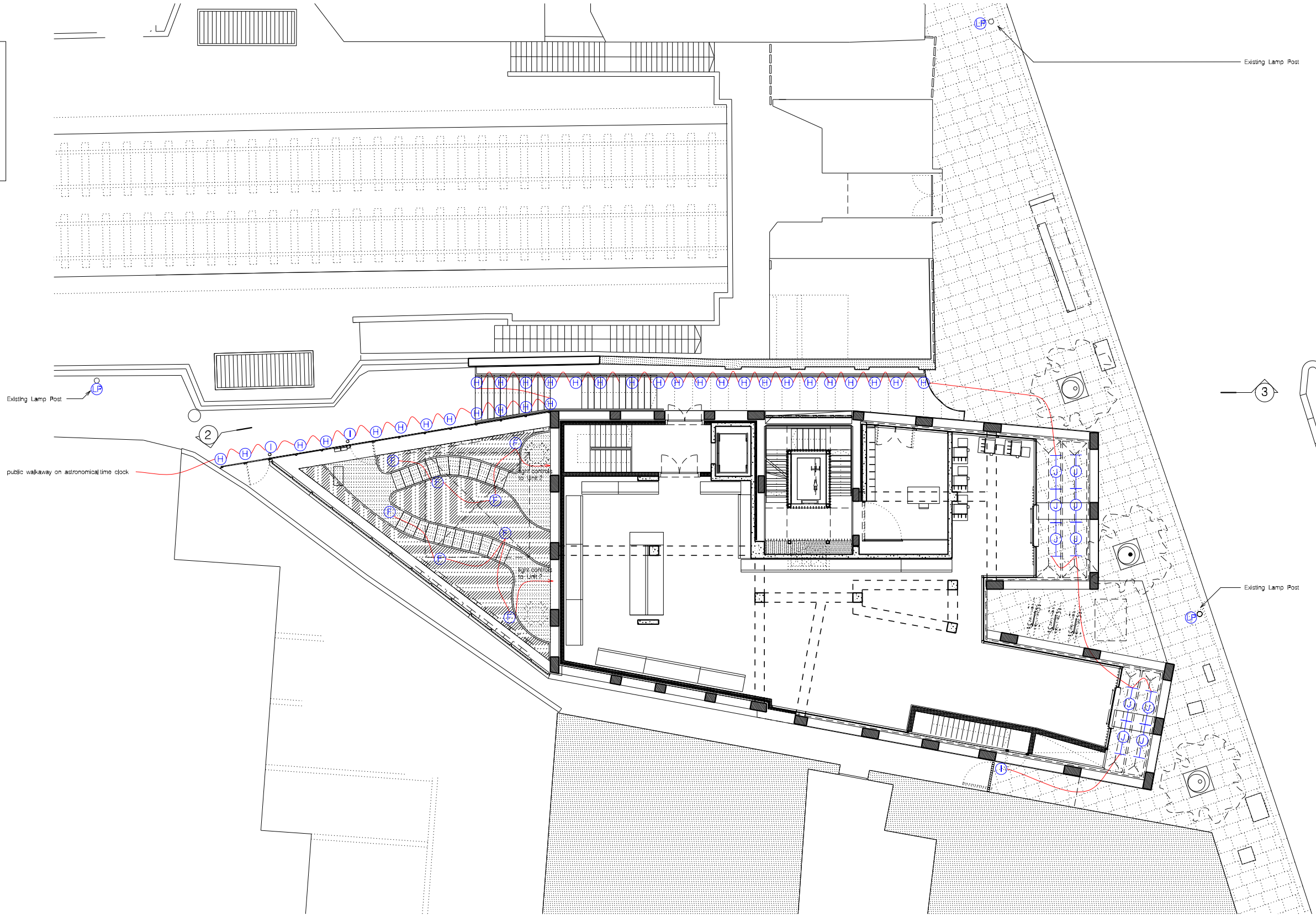
- ⓗ Iguzzini LED_EG67
- 21W 2550lm
 - 4000K CRI 80
 - Optic: wide flood 48/48
 - IP66
 - size: 611x47x77



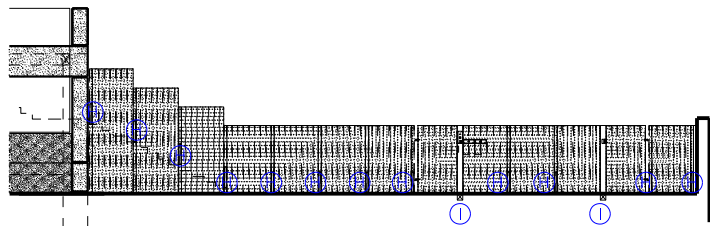
- Ⓢ Iguzzini LED_E122
- 6.7W 750lm
 - 4000K CRI 80
 - D - diffused light
 - IP68
 - size: 144(dia.) x175



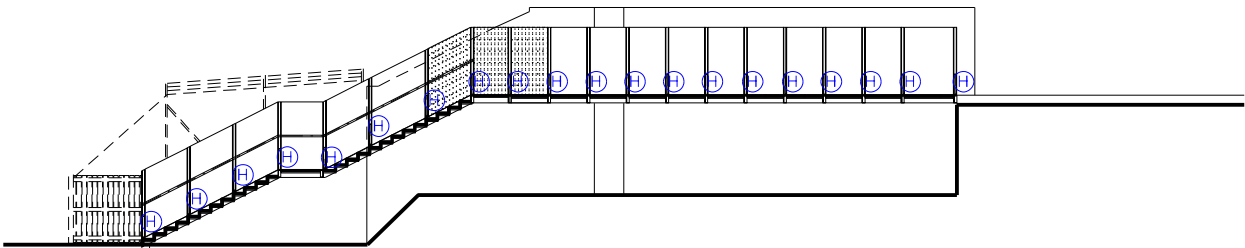
- Ⓤ Iguzzini LED_BW28
- 20W 1860lm
 - 4000K CRI 80
 - Optic: flood 48
 - IP67
 - size: 1609x55x74



① PLAN



② ELEVATION



③ ELEVATION

REVISION:	PURPOSE:	DATE:	1. The design and these drawings are the sole copyright of Amin Taha Architects to Clerkenwell Green, London EC1R 9JA. T: 020 7353 8144 F: 020 7353 9955. 2. Do not scale from this drawing in either analog or digital form. Use written dimensions only. To check drawing has been printed to the intended scale this bar should be 30mm long (30'1'').	Information: C=Comment F=Facing T=Transfer See Construction	CLIENT:	PROJECT:	DWG TITLE:	REVISION:	DATE:	SCALE:
A	ISSUED FOR PLANNING	19.04.2018			317 Finchley Road	317 Finchley Road London NW3 6EP	Public Realm – Lighting & Small Power	A	SEP 2017	① A1 1:100 ② A3 1:200
								DWG No: 240 – 1064	PURPOSE OF ISSUE: P	DR: DK CB: AT