



PLANNING STATEMENT

Proposed replacement of windows, rear external door & sidelight
at 29b Grafton Road, London NW5 3DX



RICS

14, Cornard Road
Sudbury
Suffolk CO10 2XA

1.0 Introduction

This Planning Statement accompanies an Application for Planning Permission made for the replacement of existing single glazed windows, rear external door & sidelight.

2.0 Design Principles and Concepts

2.1 The Site

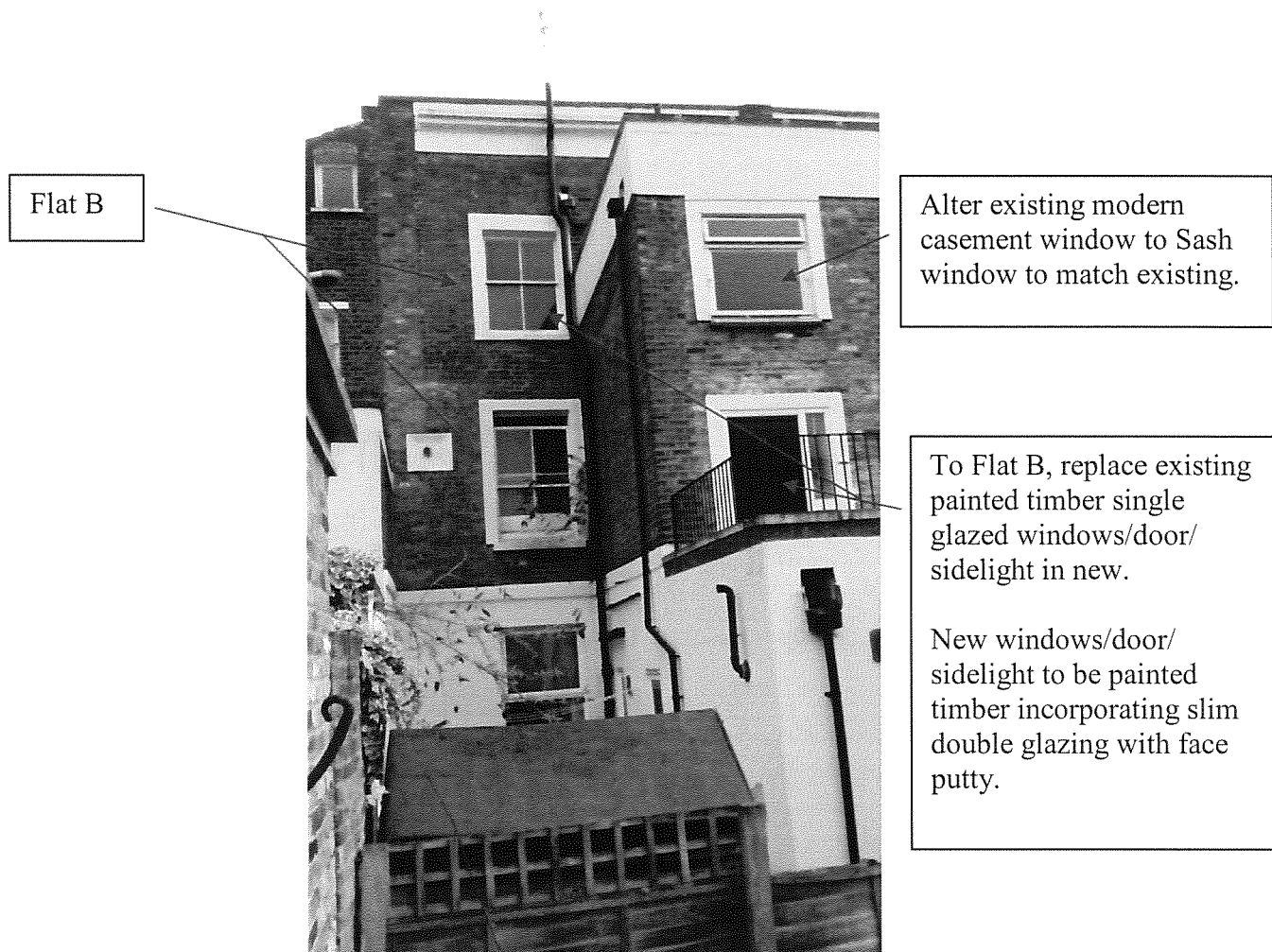
The site lies within in the Inkerman Conservation Area.

The proposal involves the replacement of painted timber single glazed windows, rear external door & sidelight in new to match existing. The new units will incorporate slim 4-4-4mm double glazing.

Front Elevation



Rear Elevation



2.2 Design and Appearance

To the front and rear elevations, the existing painted timber single glazed windows, rear door & sidelight will be replaced with new. New windows, door & sidelight will be painted timber units incorporating slim 4-4-4mm double glazing with face putty.

To the existing high level modern casement window, it is proposed to replace with a more in keeping painted timber Sash window. The window will incorporate slim 4-4-4mm double glazing with face putty.

In respect of scale, the windows and door opening sizes will not alter from existing.

In terms of context, the property is sited in the Inkerman Conservation Area and materials and details are to match those existing.

Therefore overall, it is considered there will be no detrimental effect to the Inkerman Conservation Area.

3.0 Access

Access to the site and surrounding foot paths will remain unaffected by the proposed.

2017/241