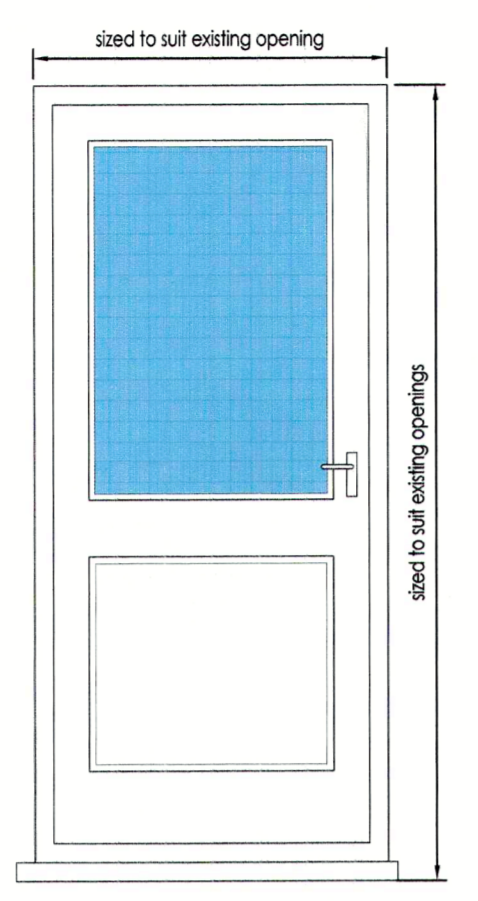


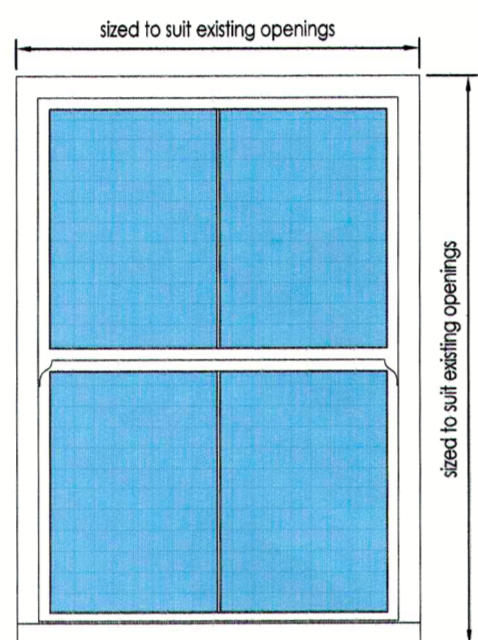
Existing painted timber single glazed Sash windows. Replace all in new painted timber unit incorporating slim 4-4mm double glazing with face putty.



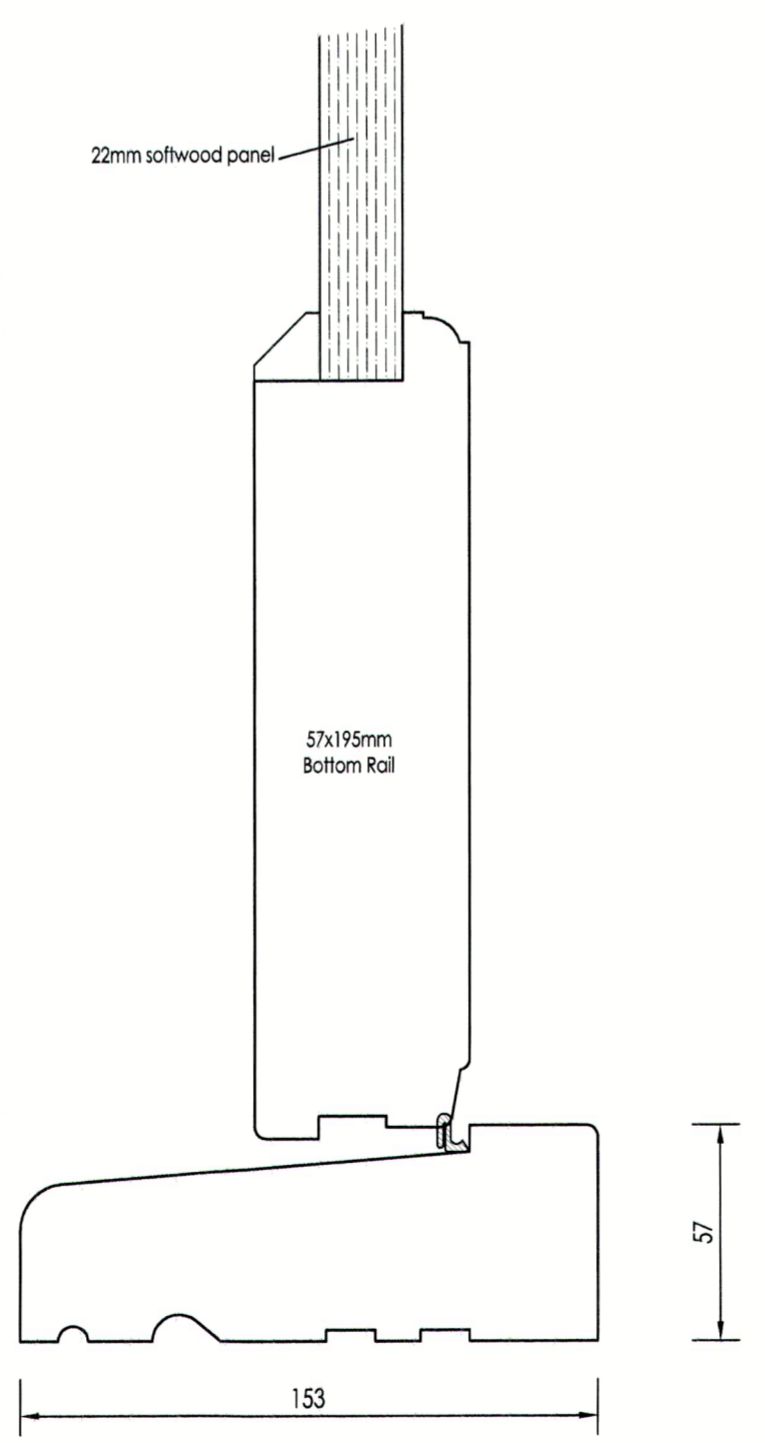
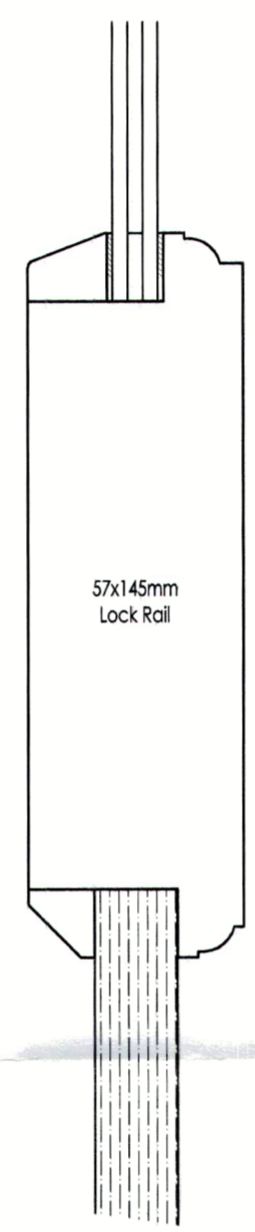
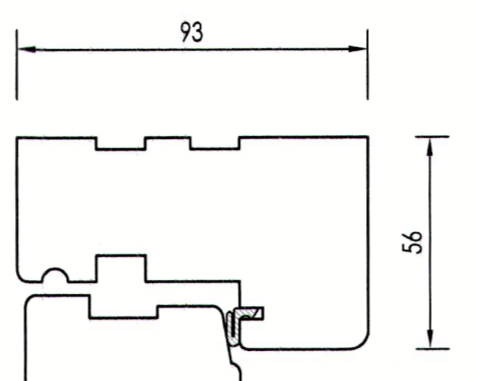
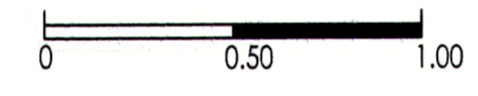
Existing/Proposed Front Elevation



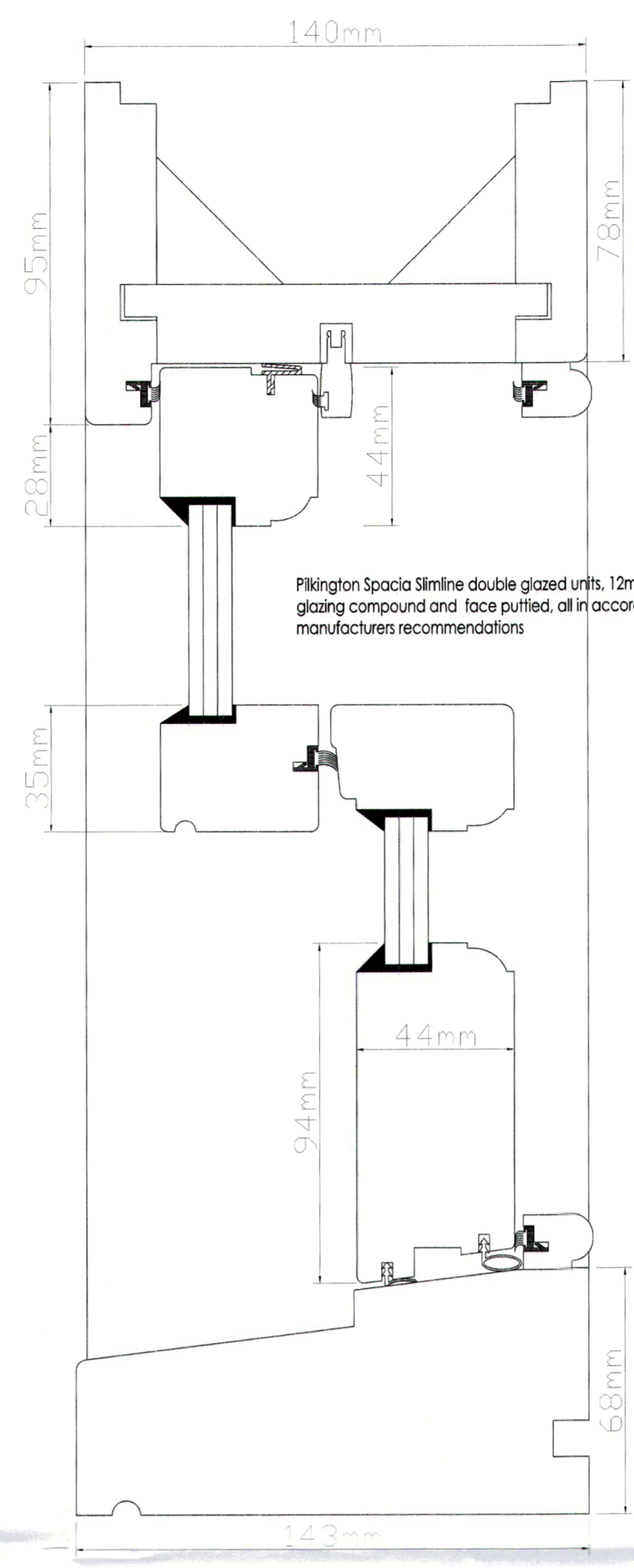
Proposed Double Glazed Door



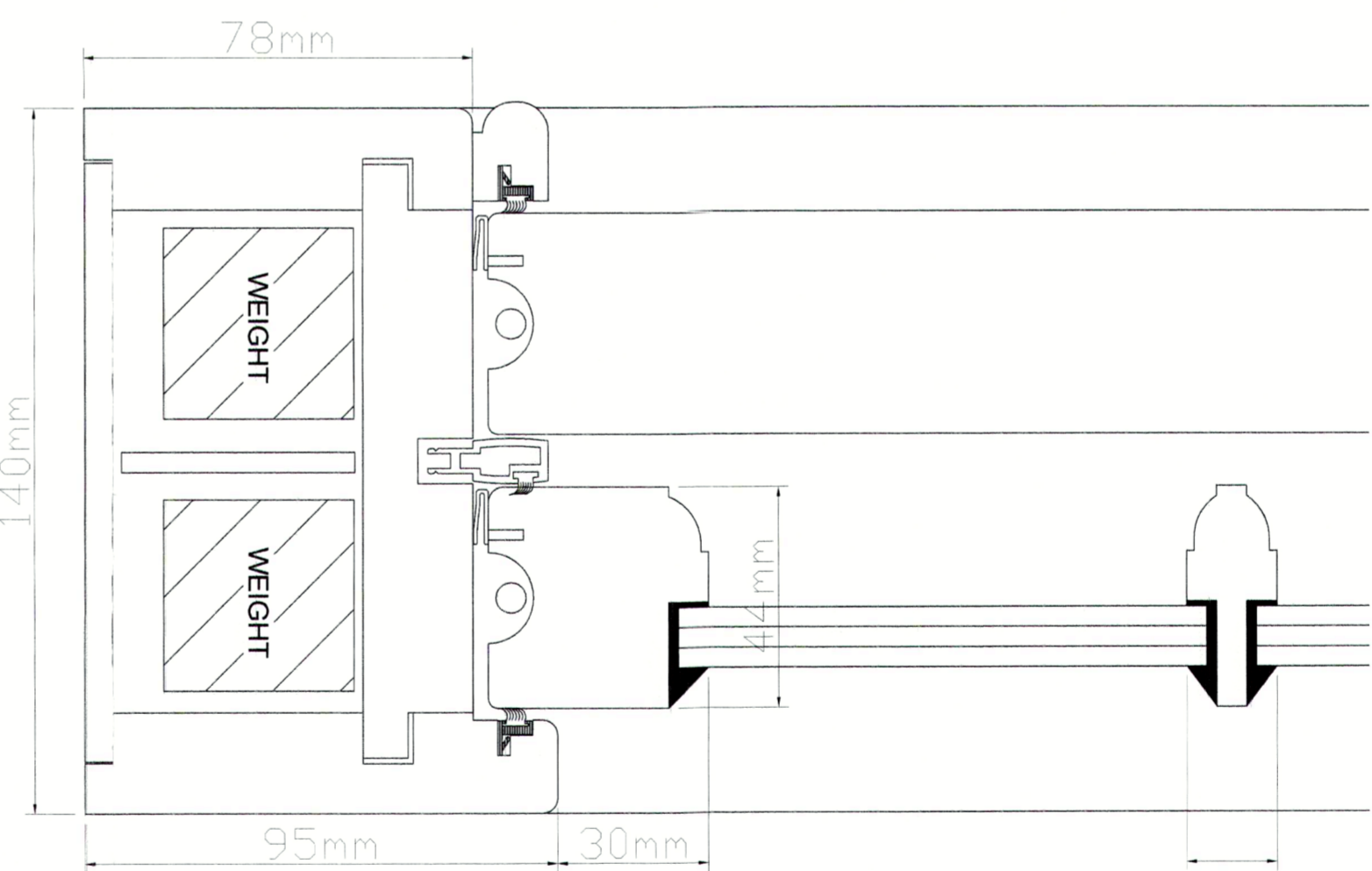
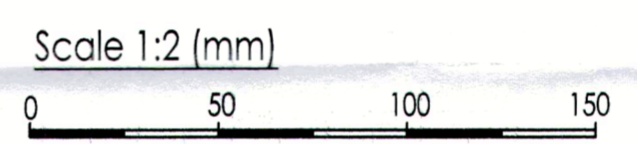
Typical Window Elevation
Scale 1:20 (m)



Double Glazed Door - Vertical Section

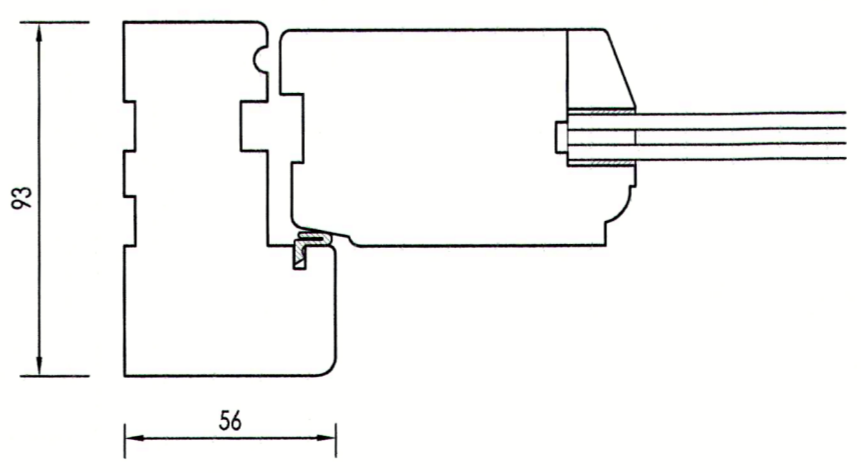


Windows sections

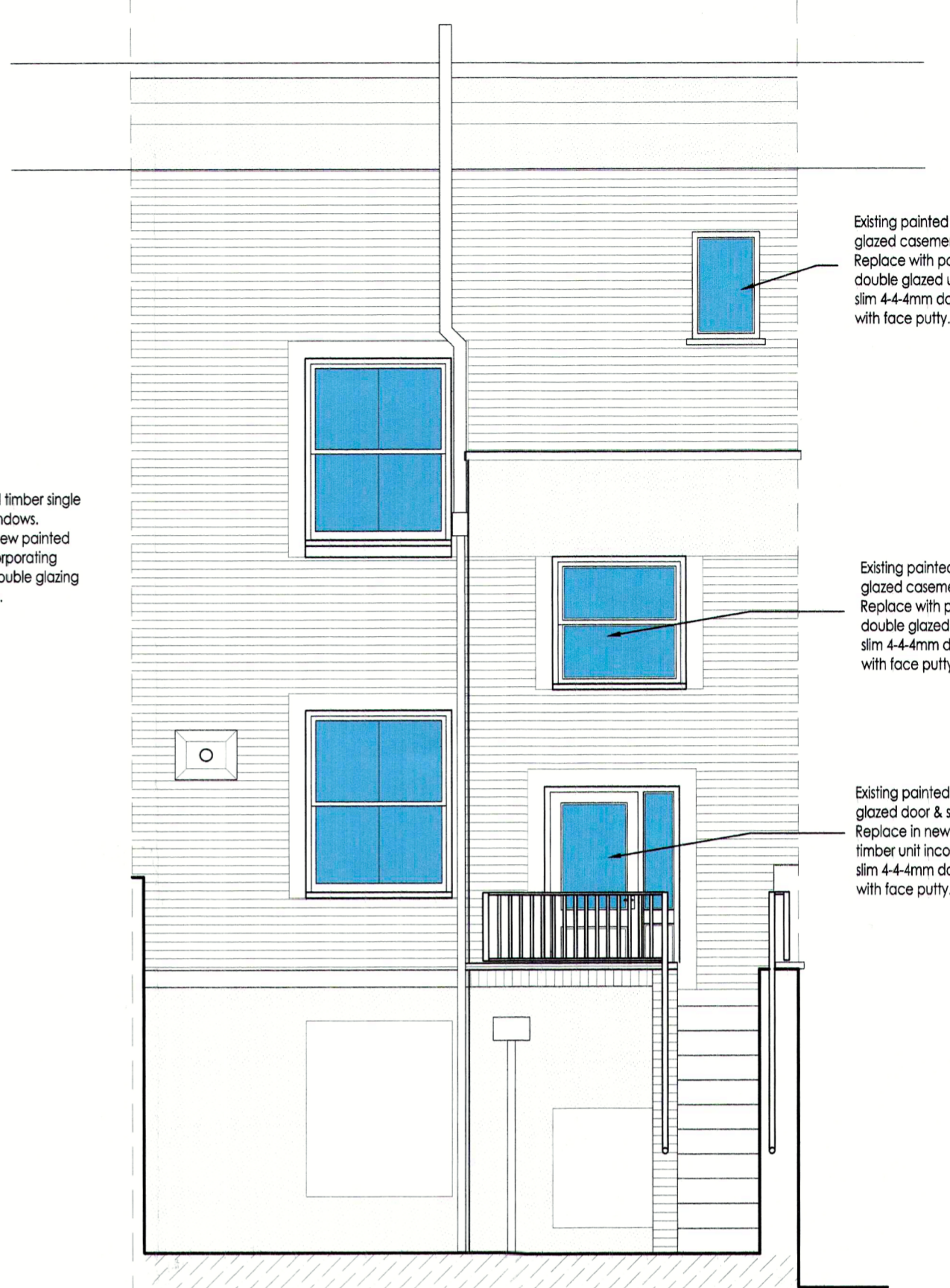
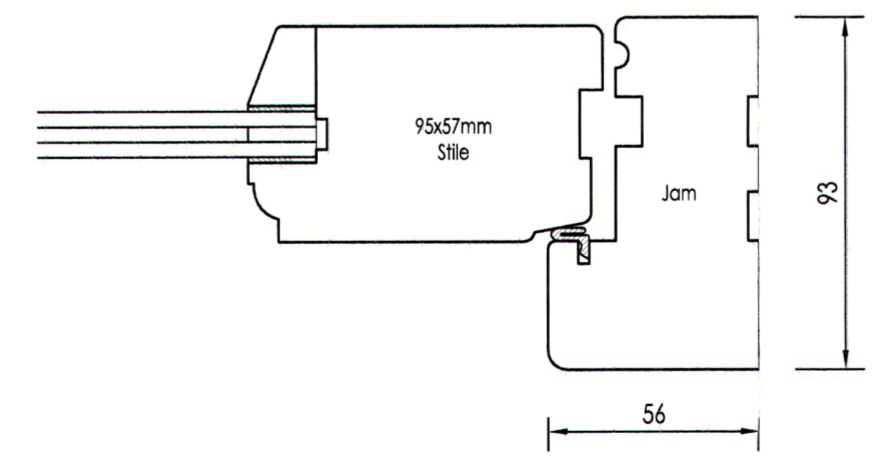


JAMB

GLAZING BAR



Double Glazed Door - Horizontal Section



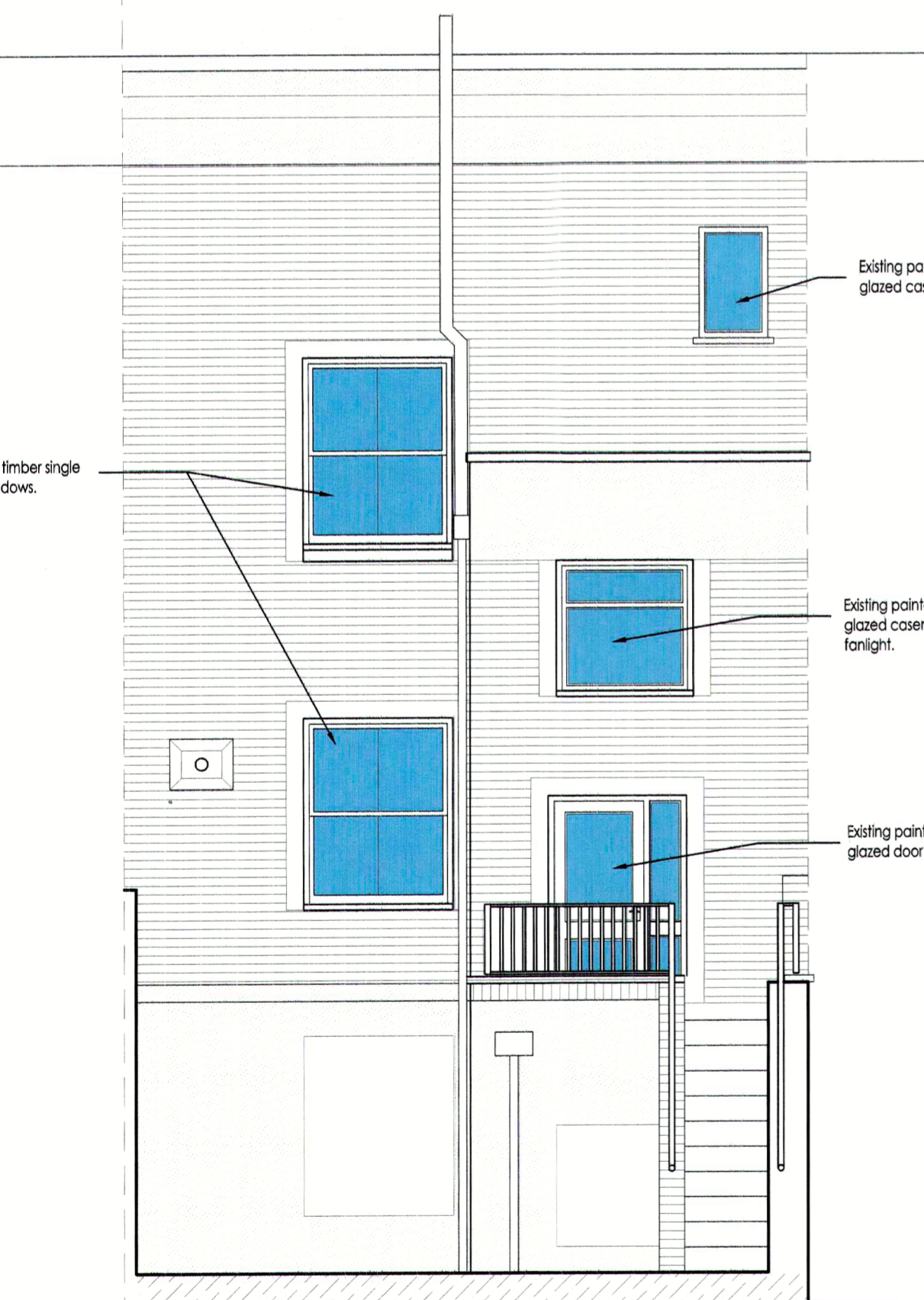
Proposed Rear Elevation

Existing painted timber single glazed casement window. Replace with painted timber double glazed unit incorporating slim 4-4mm double glazing with face putty.

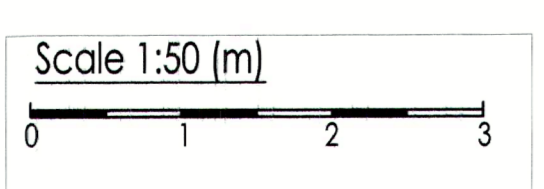
Existing painted timber single glazed casement window. Replace with painted timber double glazed unit incorporating slim 4-4mm double glazing with face putty.

Existing painted timber single glazed door & sidelight. Replace in new painted timber unit incorporating slim 4-4mm double glazing with face putty.

Existing painted timber single glazed Sash windows.



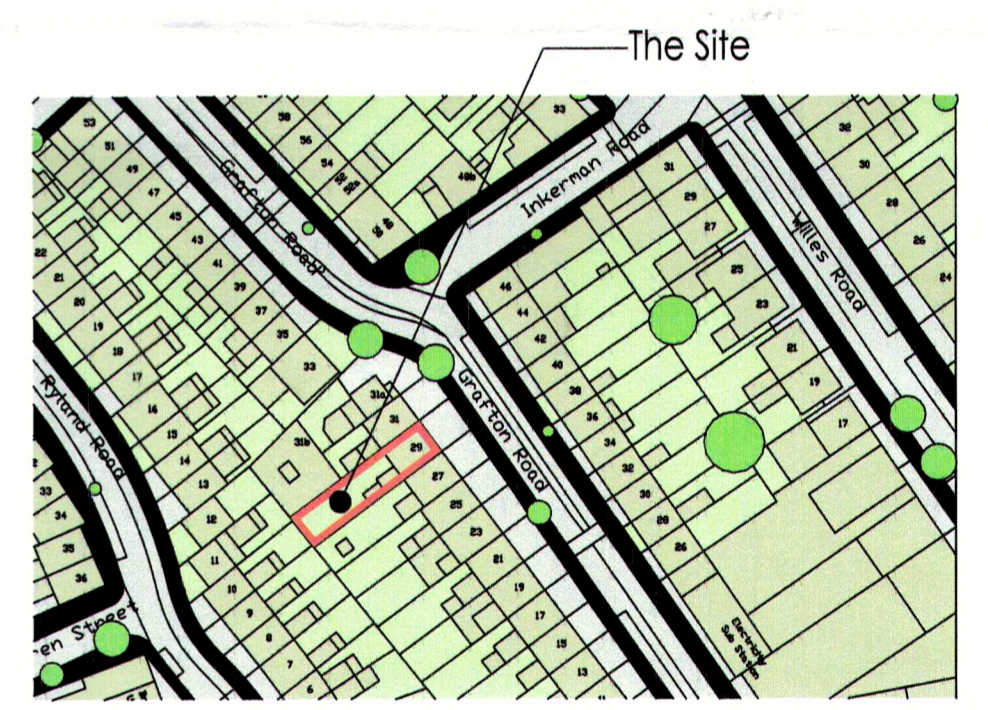
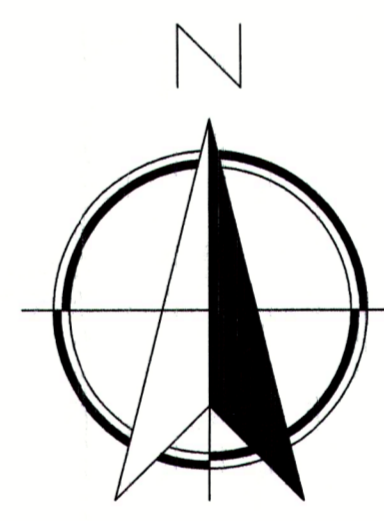
Existing Rear Elevation



Existing painted timber single glazed casement window.

Existing painted timber single glazed casement window with fanlight.

Existing painted timber single glazed door & sidelight.



Location Plan
Scale 1:1250

Whymark & Moulton
Chartered Surveyors & Building Engineers
14 Cornard Road, Sudbury, Suffolk. CO10 2XA
RICS
Tel: 01787 371371

Project **29B GRAFTON ROAD LONDON NW5 3DX**
PROPOSED WINDOW REPLACEMENT
Scale 1:2, 1:20, 1:50, 1:1250 Date **April 2018**
Drawing No **17/241-05**

Amendments