

- Balustrade:** Handrail 50 x 38mm MS channel  
Balusters 20mm diameter MS rods  
To be retained + refurbished.
- Glazing:** Clear float horizontal pivot windows  
above fixed obscured GWP panels  
Painted SW frames + post



REVISION	DATE
P2 DETAIL REFERENCES ADDED	21.12.17

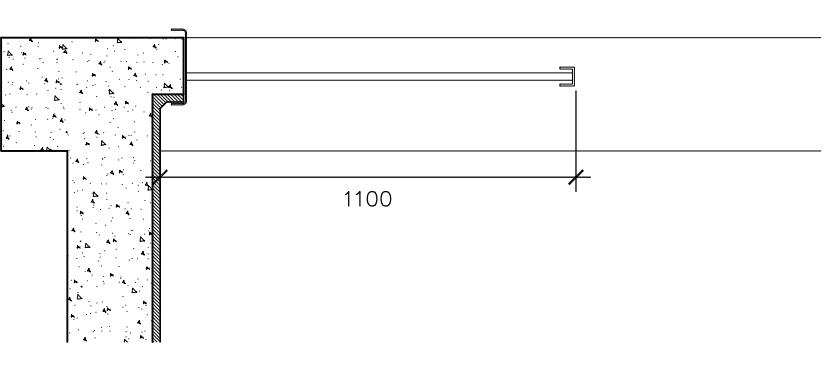
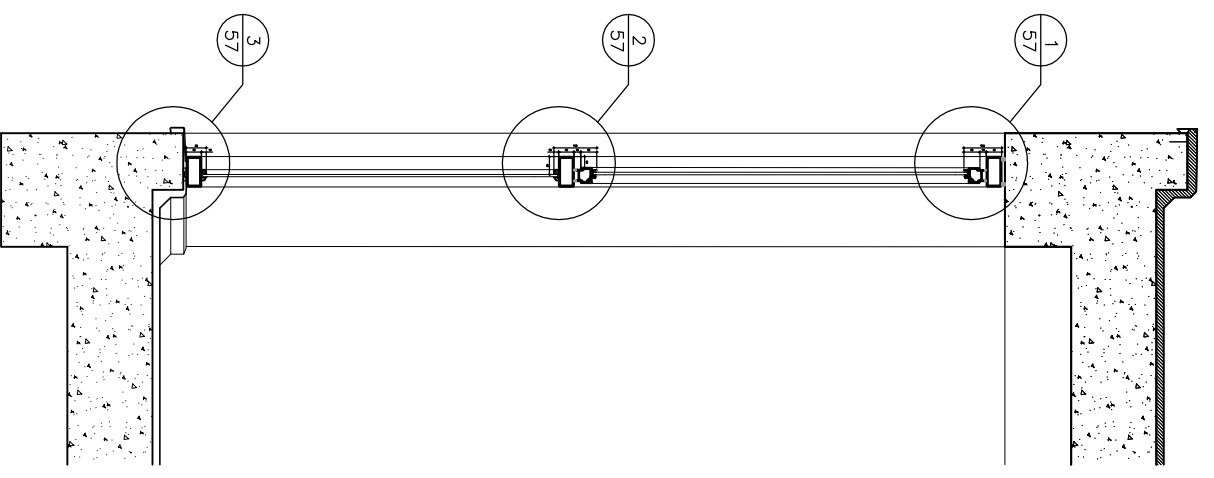
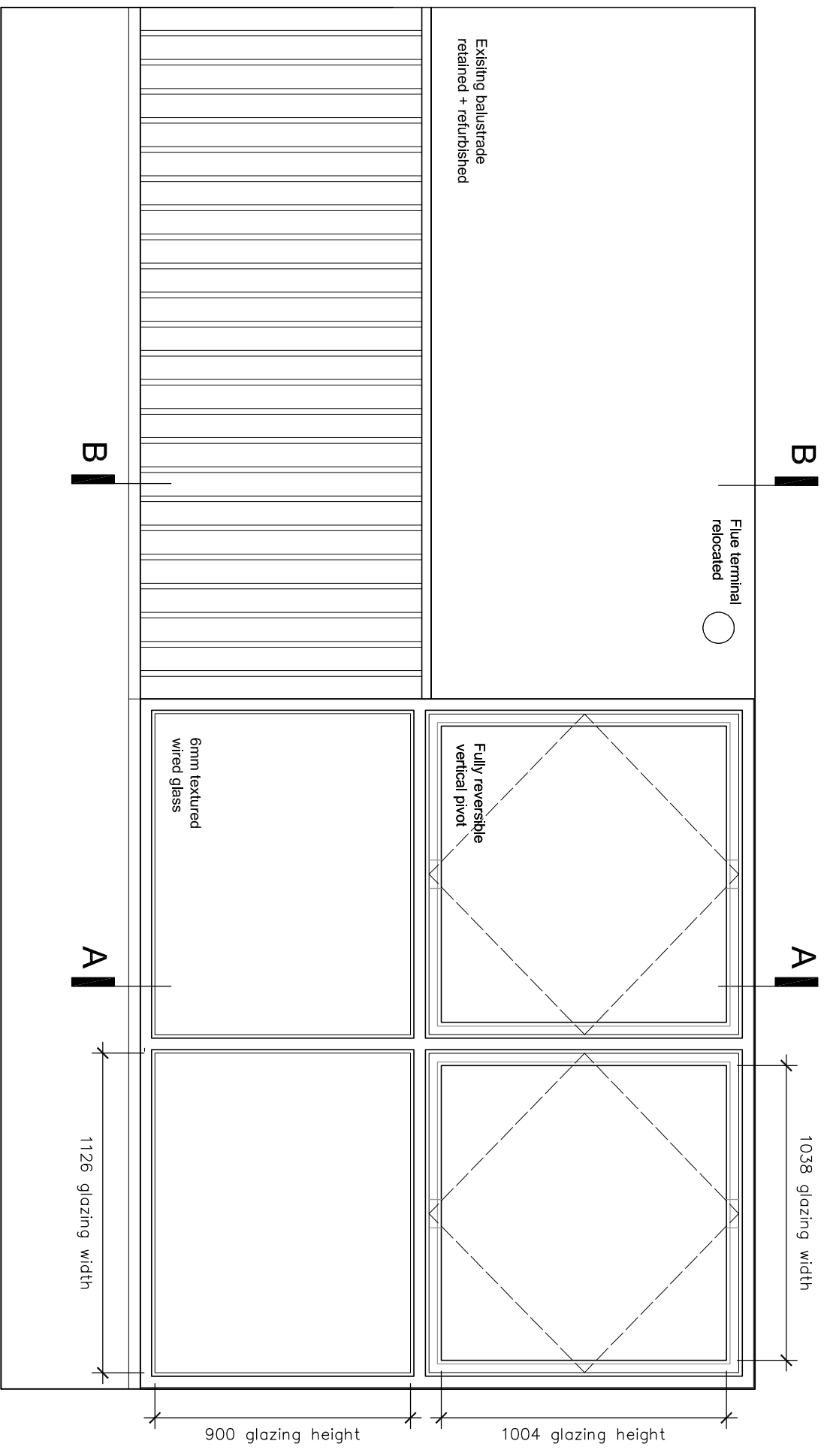
Do not scale this drawing.  
All dimensions to be checked by the Contractor before construction proceeds.  
© Randall Shaw Billingham

**RANDALL SHAW BILLINGHAM**  
Architects Energy Consultants Planners  
54 Harcombe Road London N16 0SA  
e-mail: rsh@randallshaw.co.uk  
tel: 020 7254 7472

JOB TITLE  
**CAMDEN MAJOR REPAIRS**

DWG TITLE  
**HADDO HOUSE  
BALCONIES  
AS EXISTING**

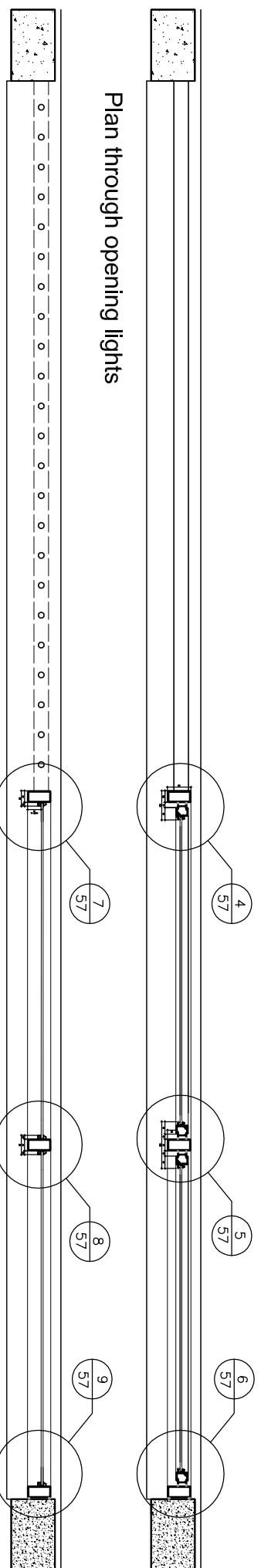
SCALE 1:20 @ A3 DWN KR  
DATE 10/16 CHK bs  
DWG NO 254/54 REV. p2



Elevation: typical bay

Section: AA  
Glazed screen

Section: BB  
Balustrade



Plan through opening lights

Plan through fixed glazing

Glazed screen: 80 x 40mm rectangular hollow section steel frame, white PPC finish

Vertical pivot clear glazed opening lights to upper panels comprising

W20 steel window frames inset in RHS frame, white PPC finish, clear laminated single glazing

Fixed lower panels with obscured glazing

Flue terminals relocated



REVISION	DATE
P2 ELEVATION AND SECTION FOR REVISED FRAME	16.02.18
P2 DETAIL REFERENCES ADDED	21.12.17

Do not scale this drawing.  
All dimensions to be checked by the Contractor before construction proceeds.  
© Randall Shaw Billingham

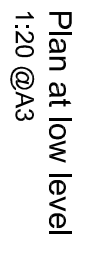
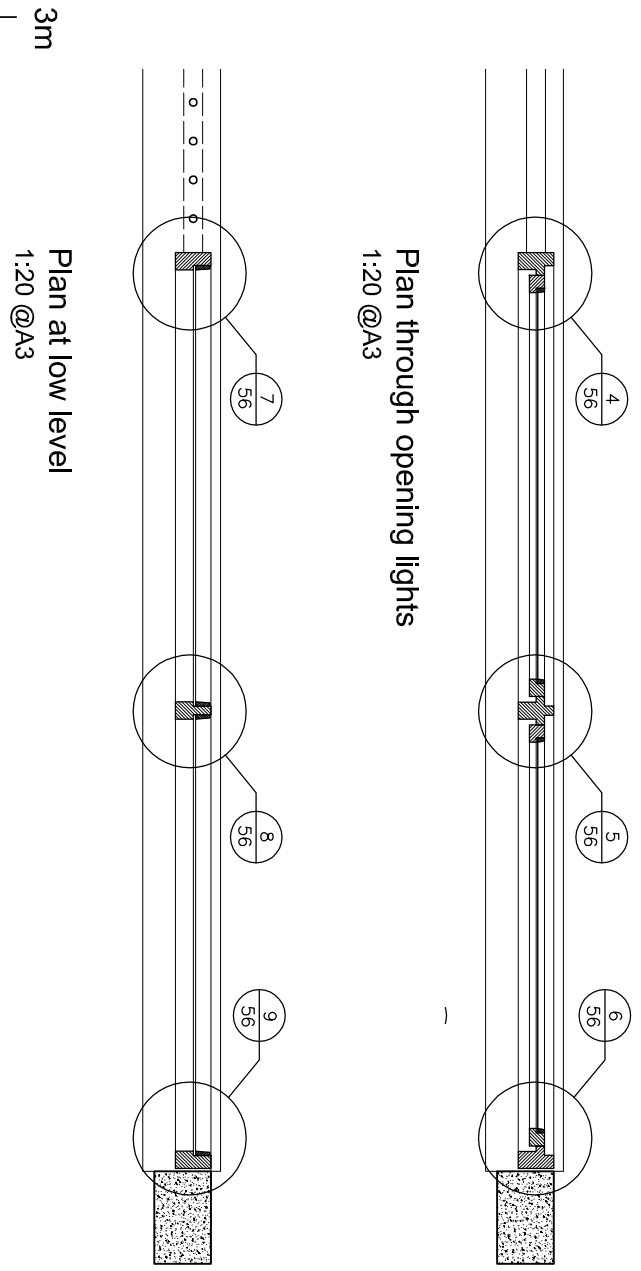
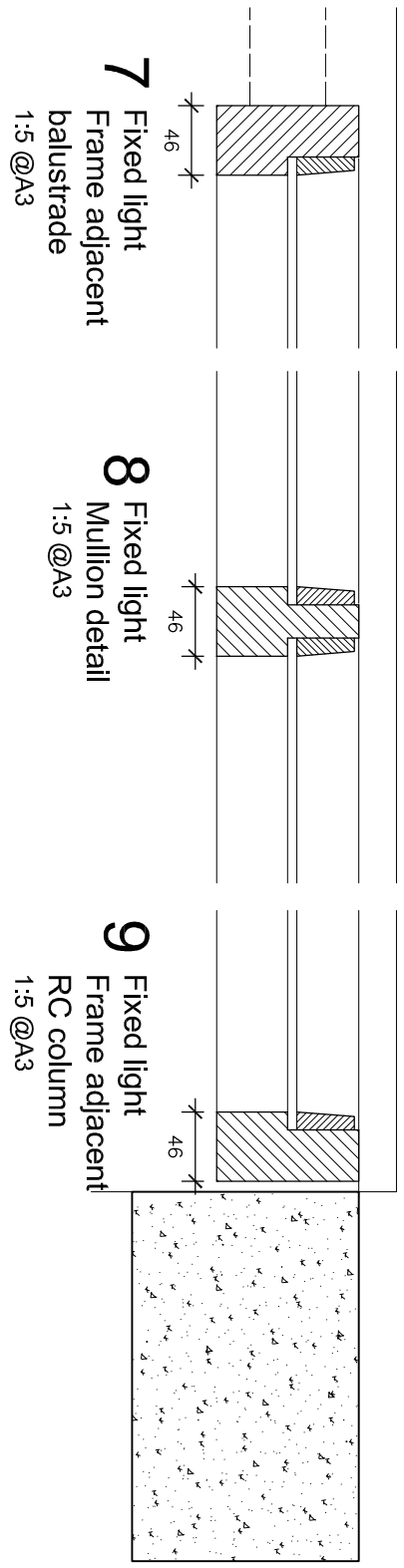
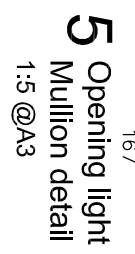
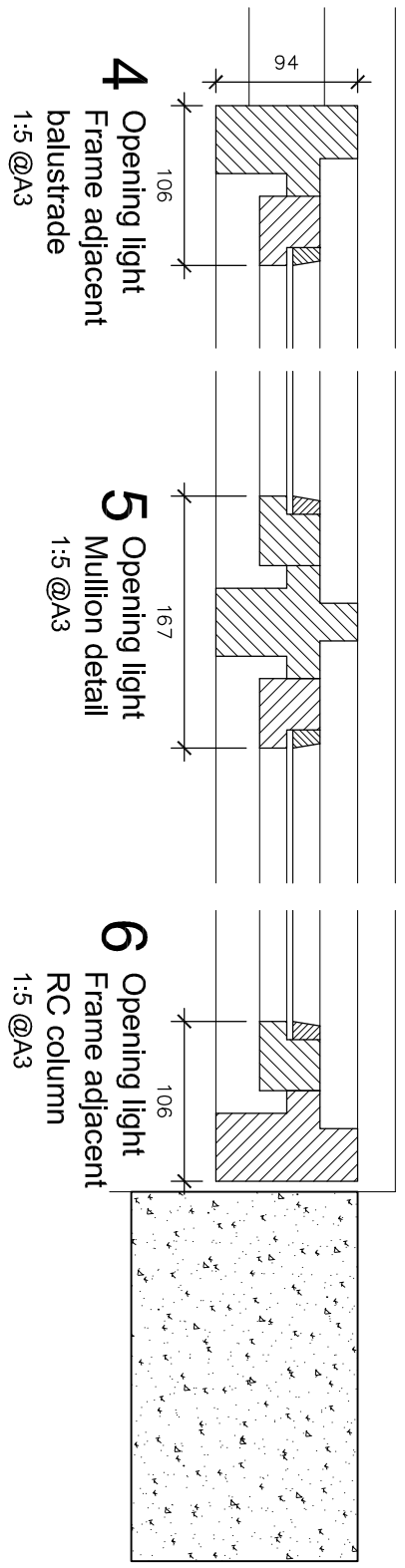
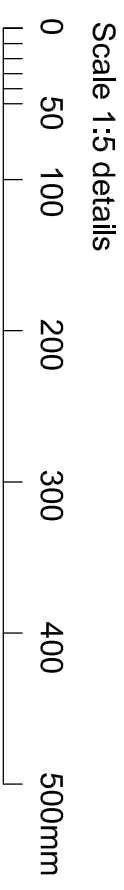
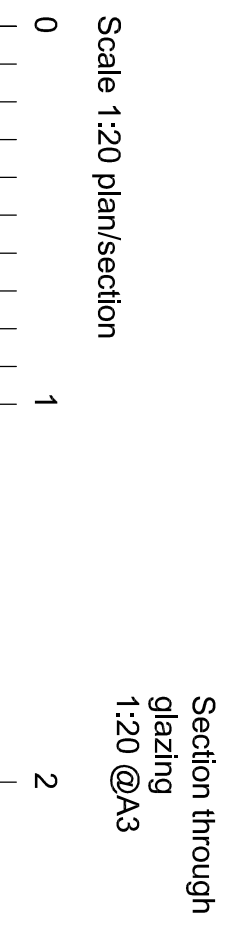
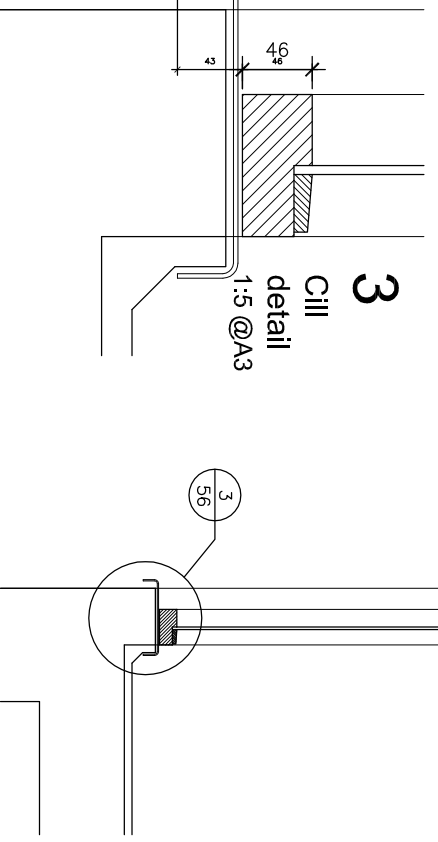
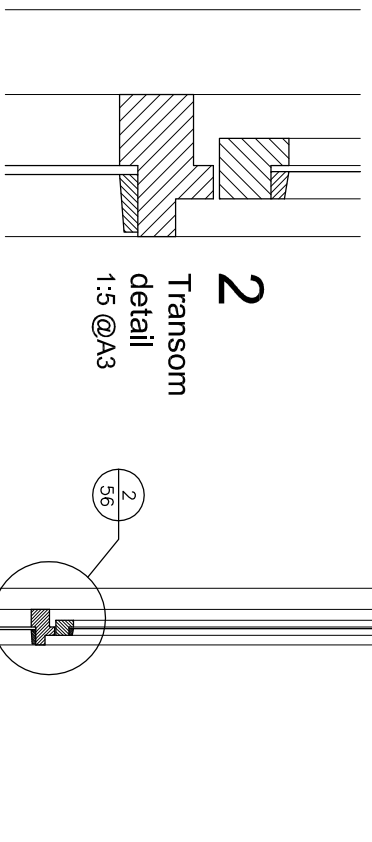
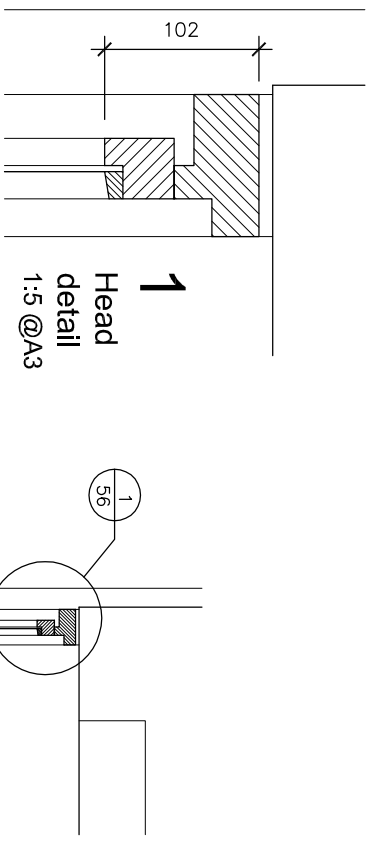
**RANDALL SHAW BILLINGHAM**  
Architects Energy Consultants Planners  
54 Harcombe Road London N16 0SA  
e-mail: [rsb@randallshaw.co.uk](mailto:rsb@randallshaw.co.uk)  
tel: 020 7254 7472

JOB TITLE  
CAMDEN MAJOR REPAIRS

DWG TITLE  
HADDO HOUSE  
ACCESS BALCONY  
GLAZED SCREENS  
AS PROPOSED

SCALE 1:20 @ A3 DWM kr  
DATE 10/17 CHK bs  
DWG NO 254/55 REV p3

Glazed Clear float horizontal pivot windows  
panels: above fixed obscured GWP panels  
Painted SW frames



REVISION	DATE

P2 DETAIL REFERENCES + DWG NO: 21.12.17

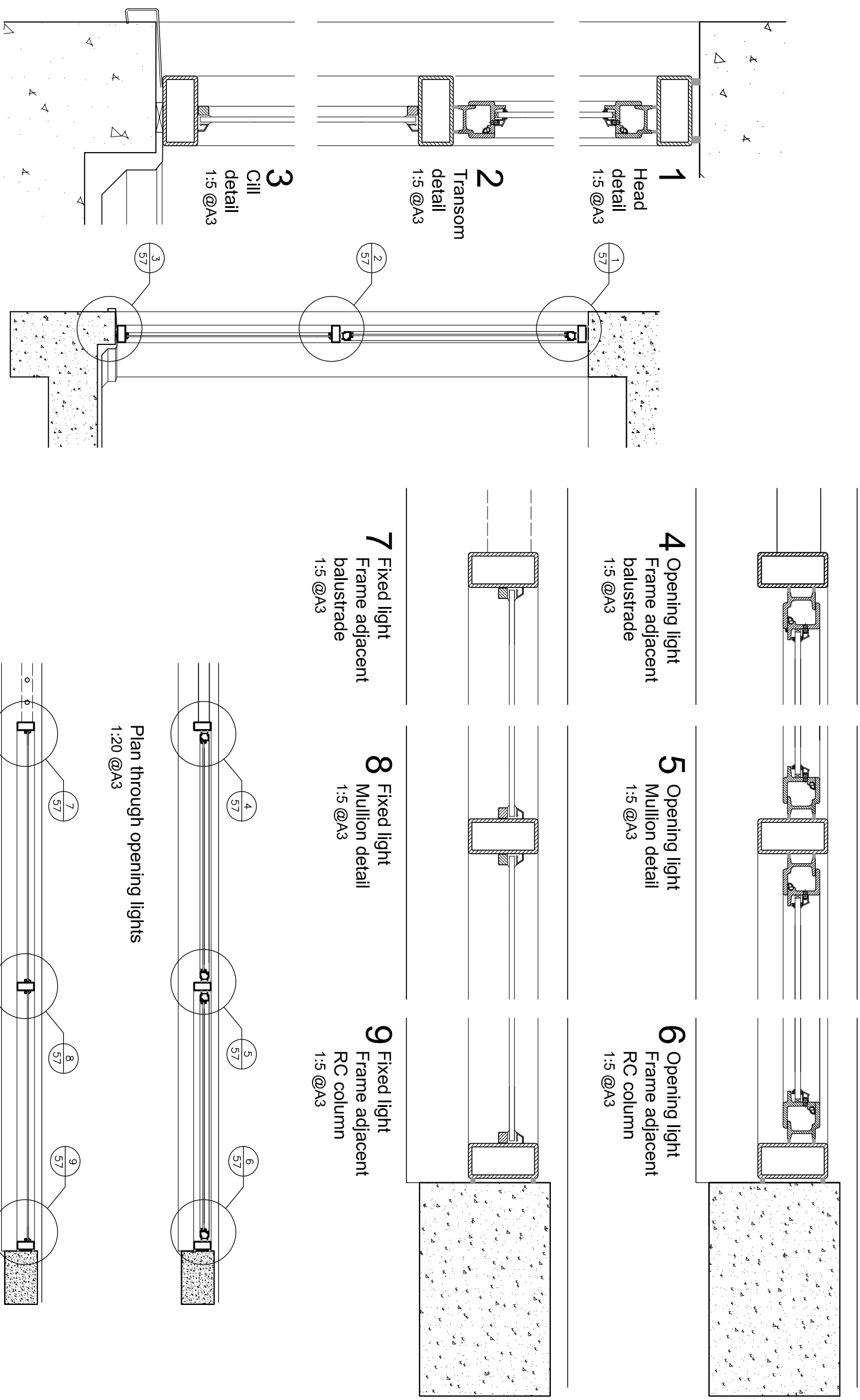
Do not scale this drawing.  
All dimensions to be checked by the Contractor  
before construction proceeds.  
© Randall Shaw Billingham

**RANDALL SHAW BILLINGHAM**  
Architects Energy Consultants Planners  
54 Harcombe Road London N16 0SA  
e-mail: rsh@randallshaw.co.uk  
tel: 020 7254 7472

JOB TITLE  
**CAMDEN MAJOR REPAIRS**

DWG TITLE  
HADDO HOUSE  
ACCESS BALCONY  
GLAZED SCREEN  
DETAILS AS EXISTING

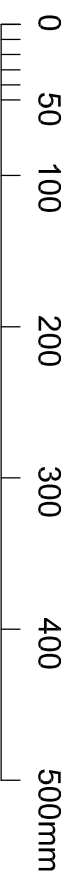
SCALE 1:20.5 @ A3 DWM kr  
DATE 10/17 CHK bs  
DWG NO 254/56 REV. p2



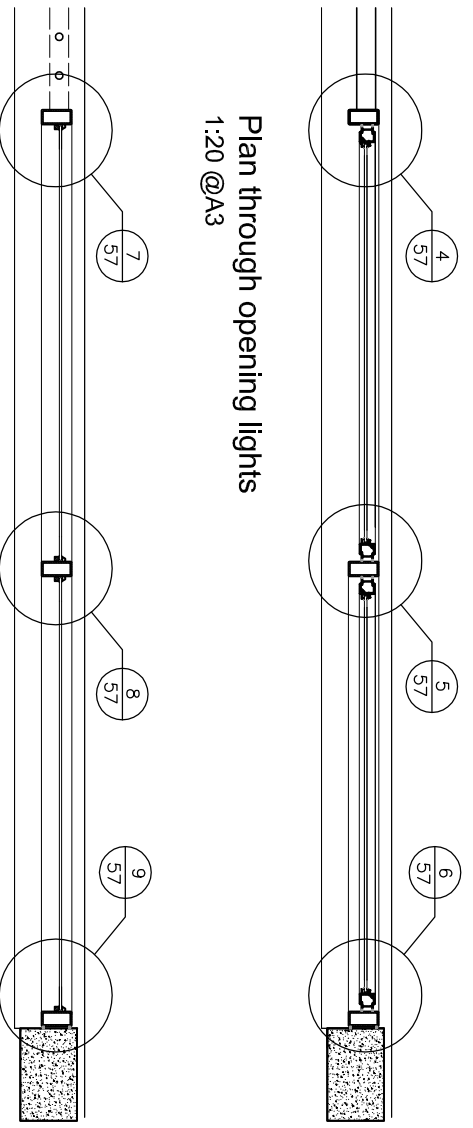
Scale 1:20 plan/section



Scale 1:5 details



Plan at low level  
1:20 @A3



Glazed screen:

80 x 40mm rectangular hollow section steel frame, white PPC finish  
Vertical pivot clear glazed opening lights to upper panels comprising  
W20 steel window frames inset in RHS frame, white PPC finish,  
clear laminated single glazing  
Fixed lower panels with obscured glazing  
Flue terminals relocated

P2 REVISION PLAN SCREENS, NOTES AMENDED 14.02.14  
P2 REV: A0000: SCALE AMENDED 21.12.17

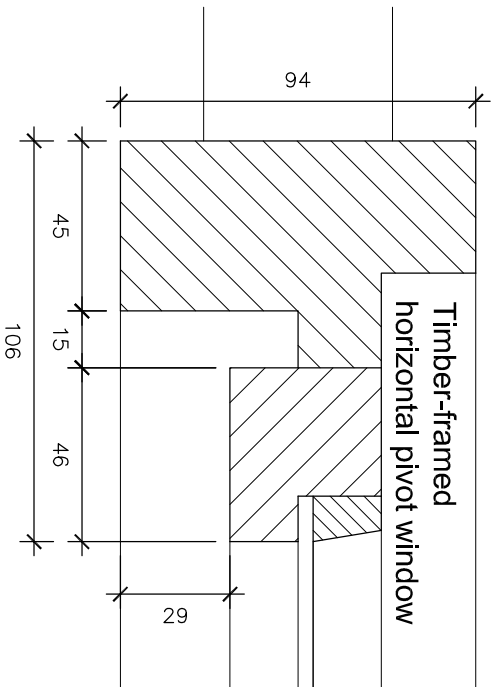
Do not scale this drawing.  
All dimensions to be checked by the Contractor  
before construction proceeds.  
© Randall Shaw Billingham

RANDALL SHAW BILLINGHAM  
Architects Energy Consultants Planners  
54 Harcombe Road London N16 0SA  
e-mail: rsh@randallshaw.co.uk  
tel: 020 7254 7472

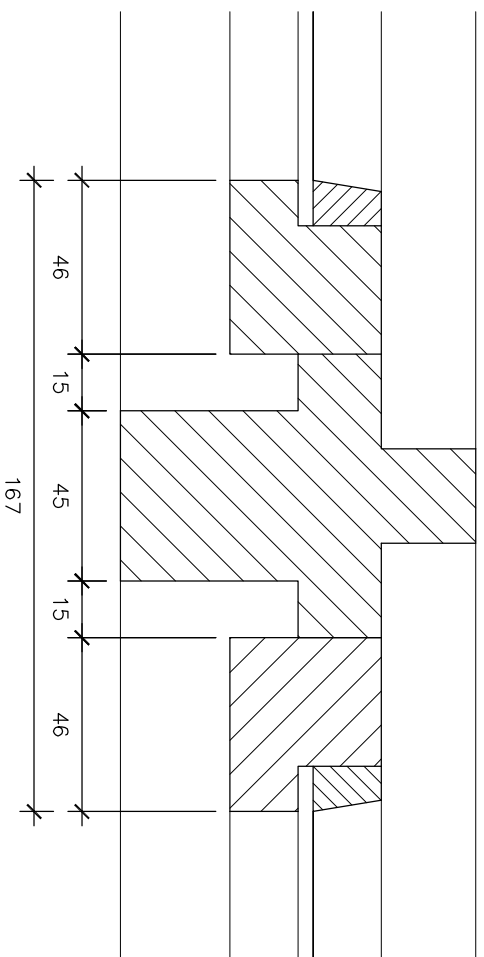
JOB TITLE  
CAMDEN MAJOR REPAIRS

DWG TITLE  
HADDO HOUSE  
ACCESS BALCONY  
GLAZED SCREEN  
DETAILS AS PROPOSED

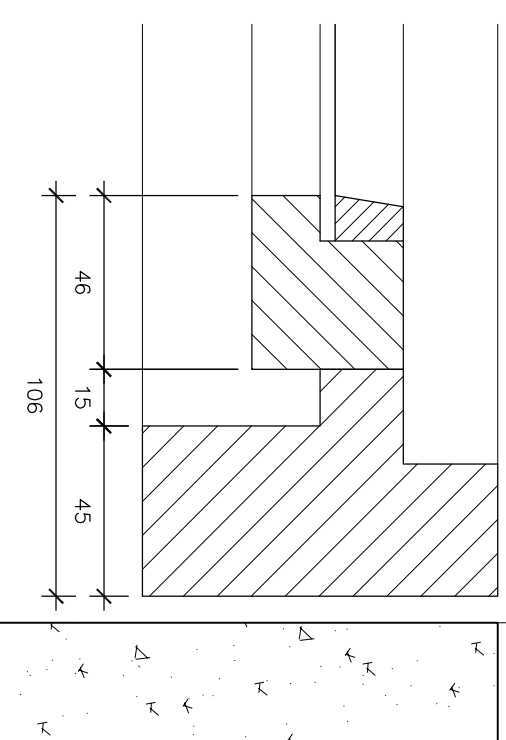
SCALE 1:20, 5 @ A3 DWN kr  
DATE 10/17 CHK bs  
DWG NO 254/57 REV p2



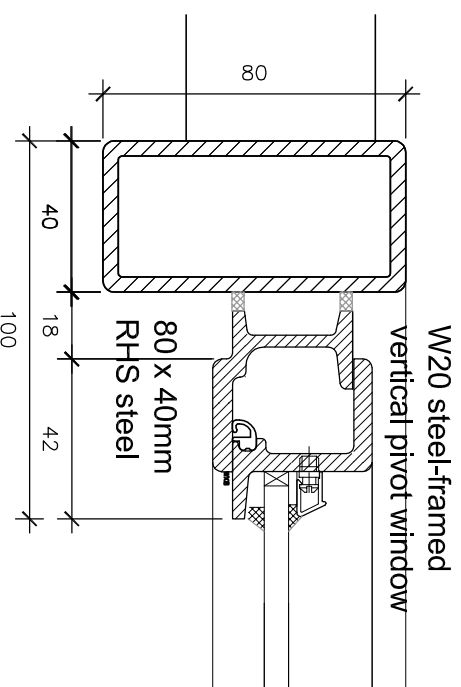
Opening light  
 Frame adjacent balustrade  
**Details as existing**



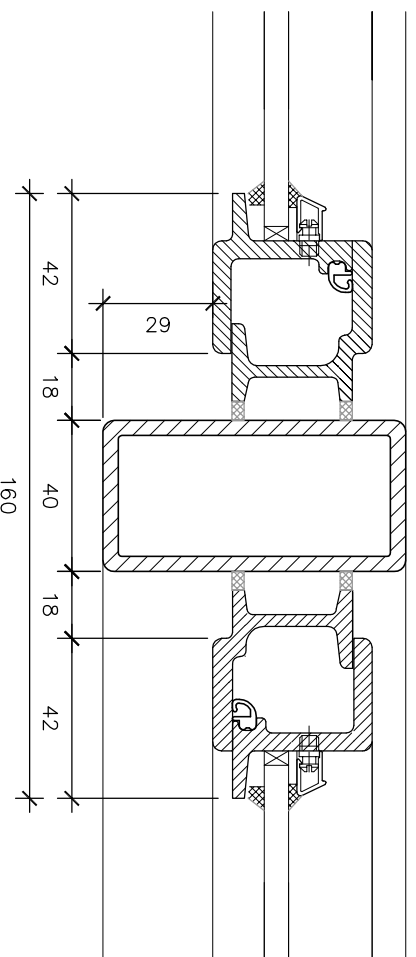
Opening light  
 Mullion detail



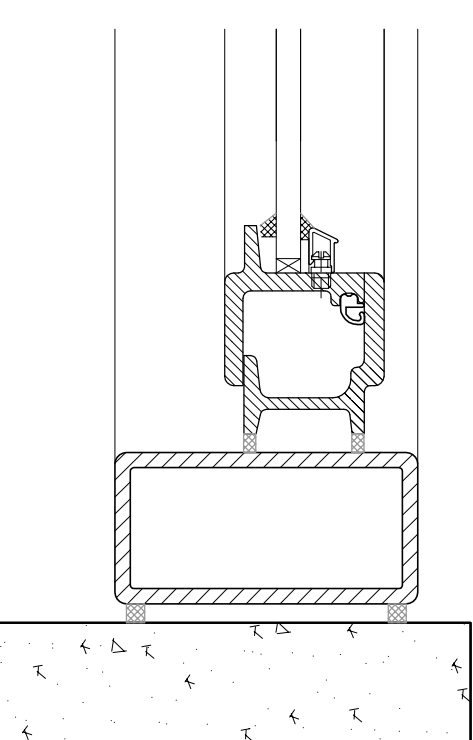
Opening light  
 Frame adjacent  
 RC column



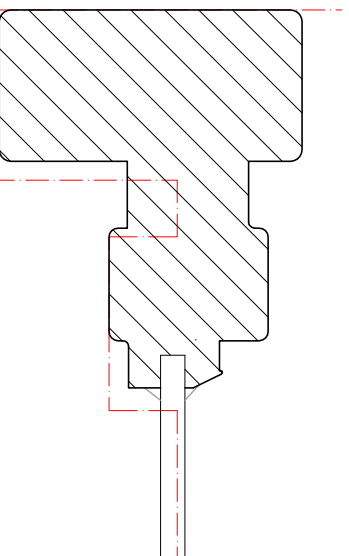
Opening light  
 Frame adjacent balustrade  
**Details as proposed**



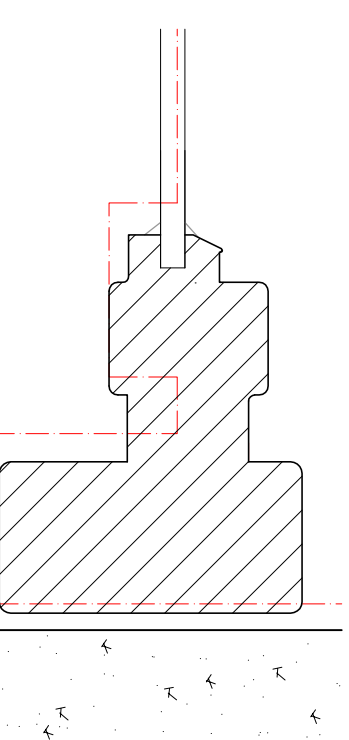
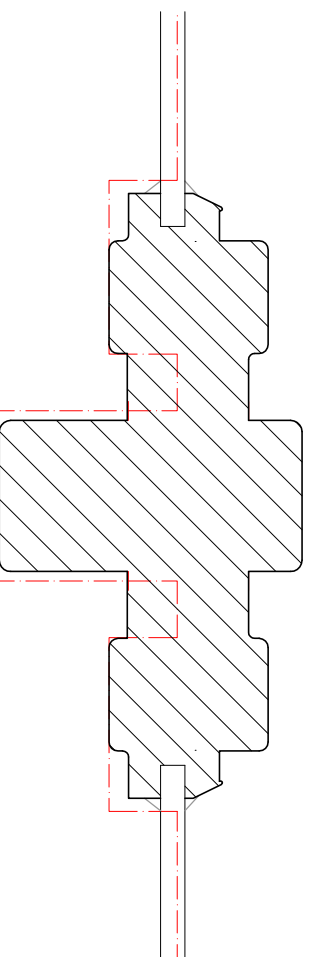
Opening light  
 Mullion detail3



Opening light  
 Frame adjacent  
 RC column



Profiles compared:- Red line shows existing  
 Solid black line shows proposed



REVISION	DATE

p2 *Detail revised, comparative section added* 16.02.18

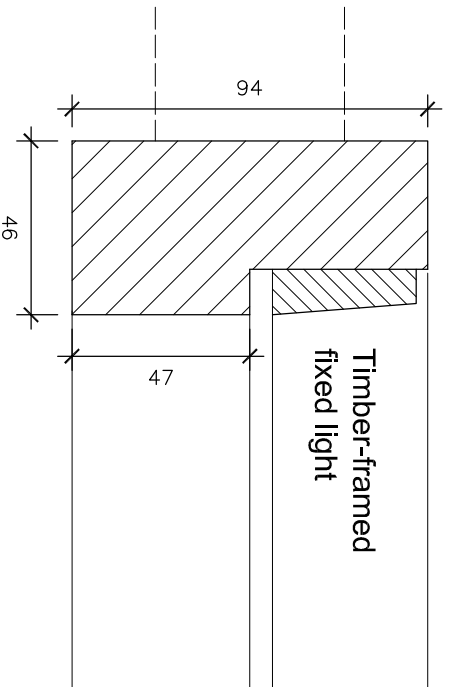
Do not scale this drawing.  
 All dimensions to be checked by the Contractor before construction proceeds.  
 © Randall Shaw Billingham

**RANDALL SHAW BILLINGHAM**  
 Architects Energy Consultants Planners  
 54 Harcombe Road London N16 0SA  
 e-mail: rsh@randallshaw.co.uk  
 tel: 020 7254 7472

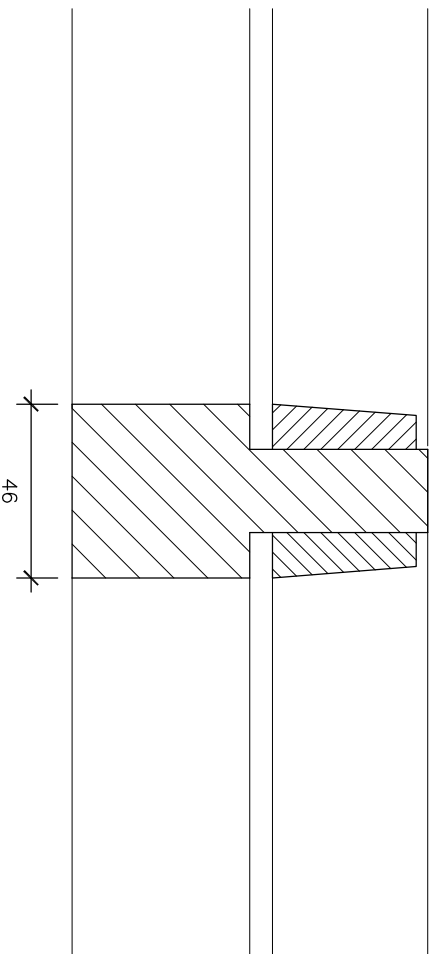
JOB TITLE  
**CAMDEN MAJOR REPAIRS**

DWG TITLE  
**HADDO HOUSE  
 GLAZED SCREEN  
 COMPARATIVE  
 OPENING LIGHT DETAILS**

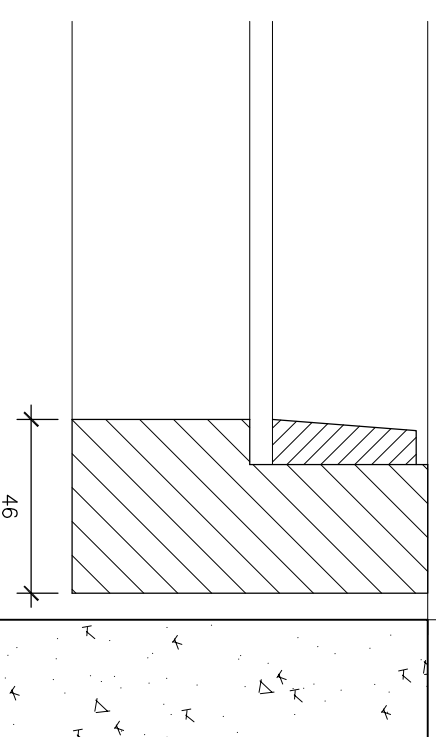
SCALE 1:2 @ A3 DWM KR  
 DATE 12/17 CHK. bs  
 DWG NO. 254/ 58 REV. p2



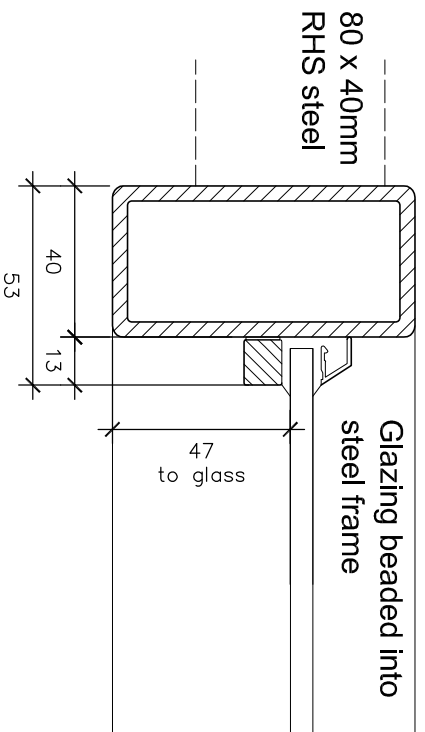
Fixed glazing  
Frame adjacent balustrade  
**Details as existing**



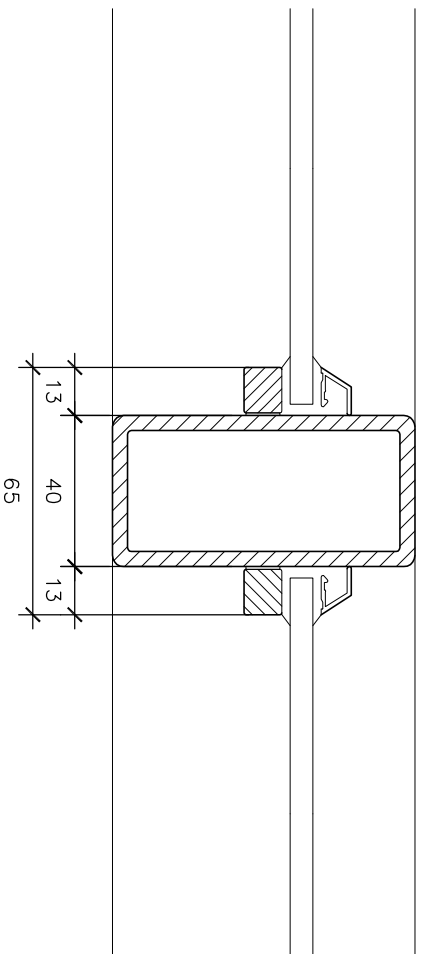
Fixed glazing  
Mullion detail



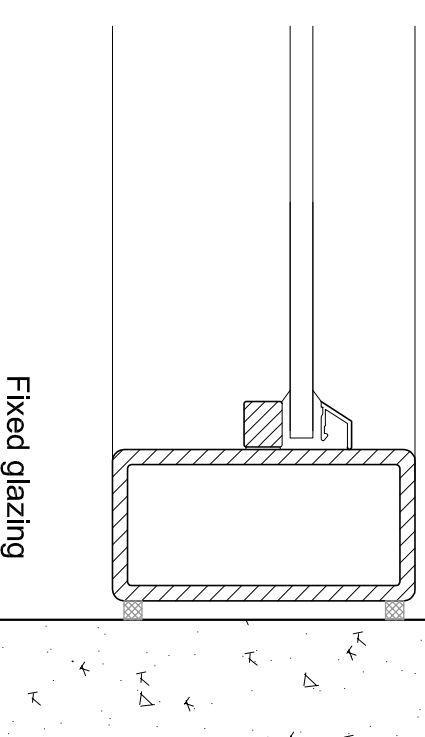
Fixed glazing  
Frame adjacent  
RC column



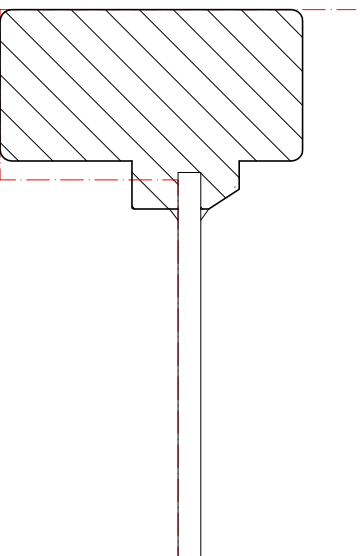
Fixed glazing  
Frame adjacent balustrade  
**Details as proposed**



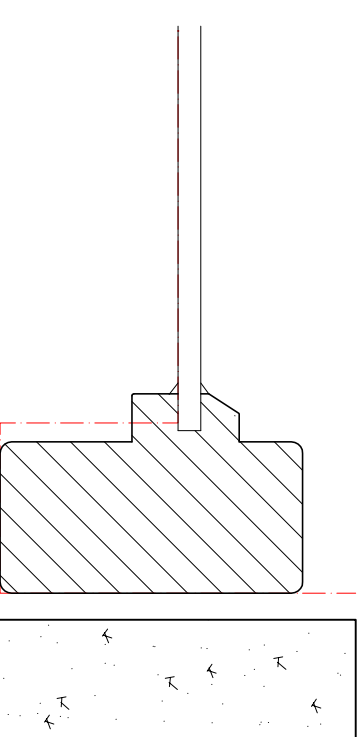
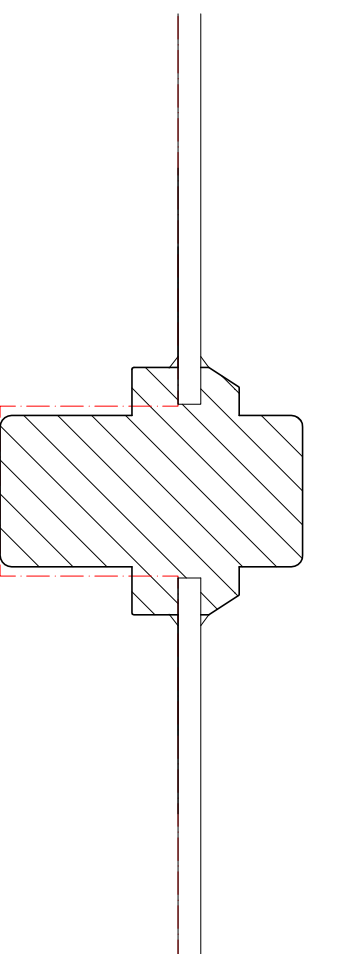
Fixed glazing  
Mullion detail



Fixed glazing  
Frame adjacent  
RC column



Profiles compared:- Red line shows existing  
Solid black line shows proposed



p2 details revised, comparative  
revision 55/24

16.02.18

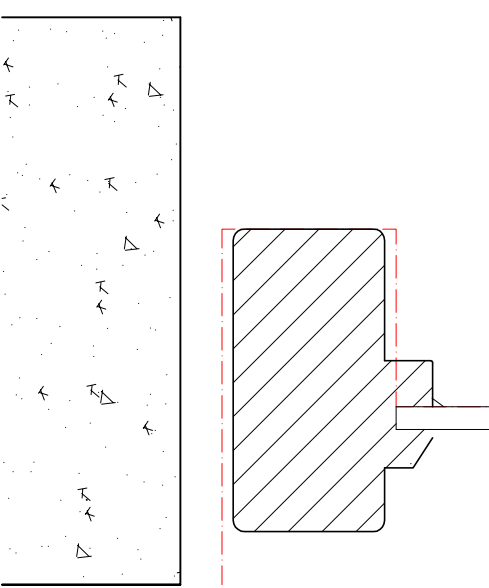
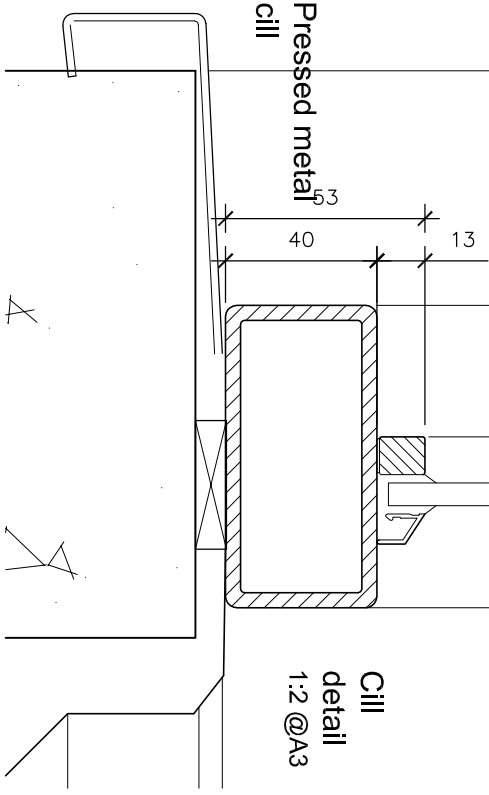
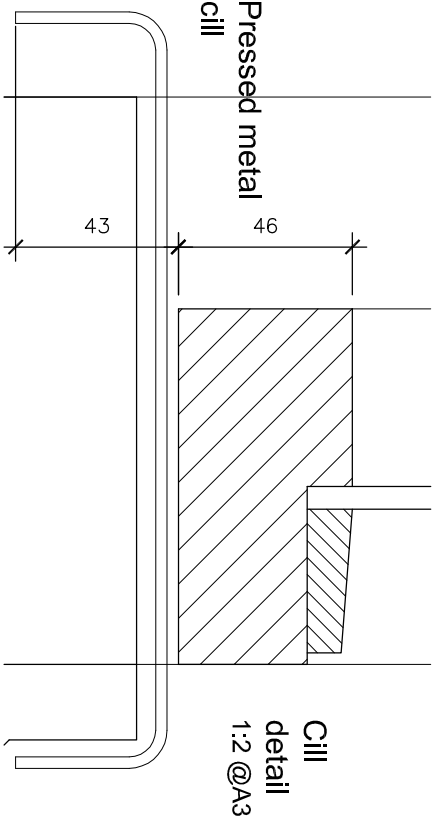
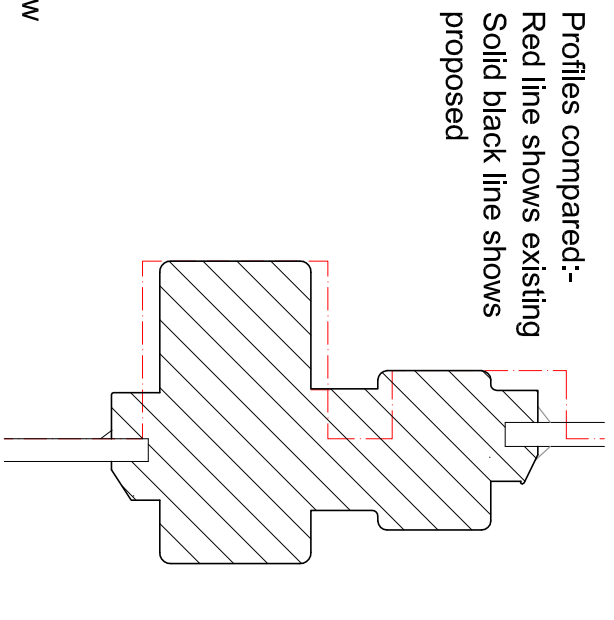
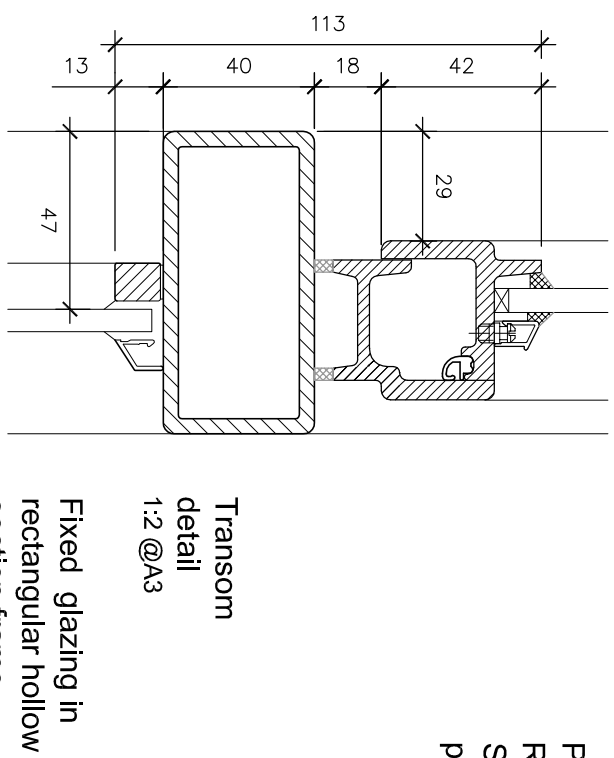
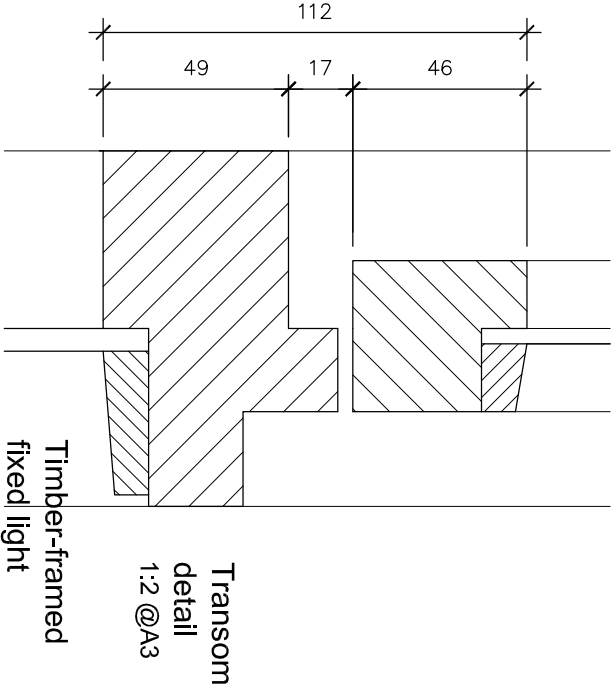
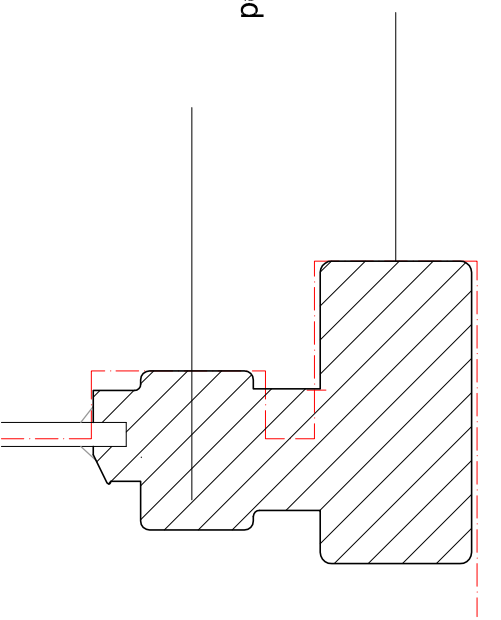
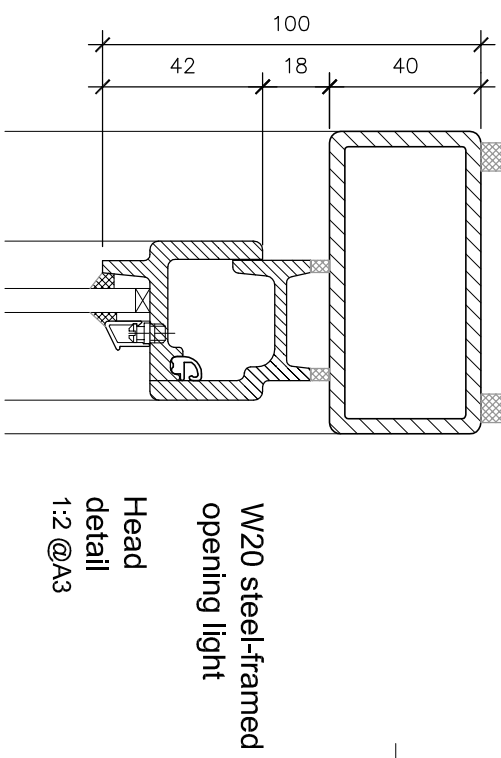
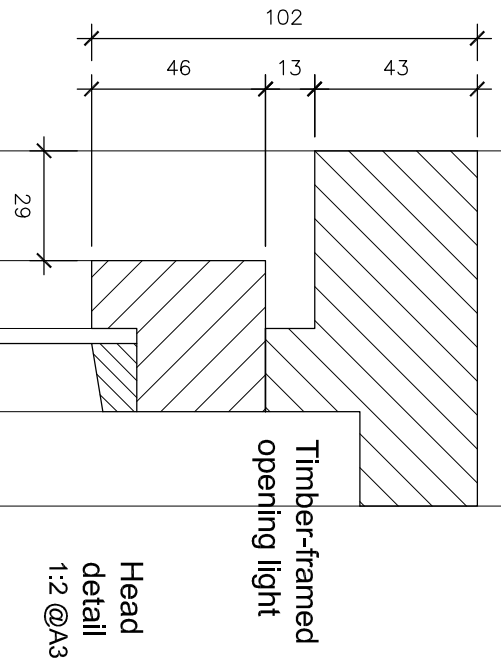
Do not scale this drawing.  
All dimensions to be checked by the Contractor  
before construction proceeds.  
© Randall Shaw Billingham

**RANDALL SHAW BILLINGHAM**  
Architects Energy Consultants Planners  
54 Harcombe Road London N16 0SA  
e-mail: rsh@randallshaw.co.uk  
tel: 020 7254 7472

JOB TITLE  
**CAMDEN MAJOR REPAIRS**

DWG TITLE  
**HADDO HOUSE  
GLAZED SCREEN  
COMPARATIVE  
FIXED LIGHT DETAILS**

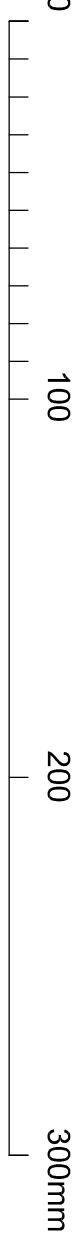
SCALE 1:2 @ A3 DWN KR  
DATE 12/17 CHK bs  
DWG NO 254/59 REV. p2

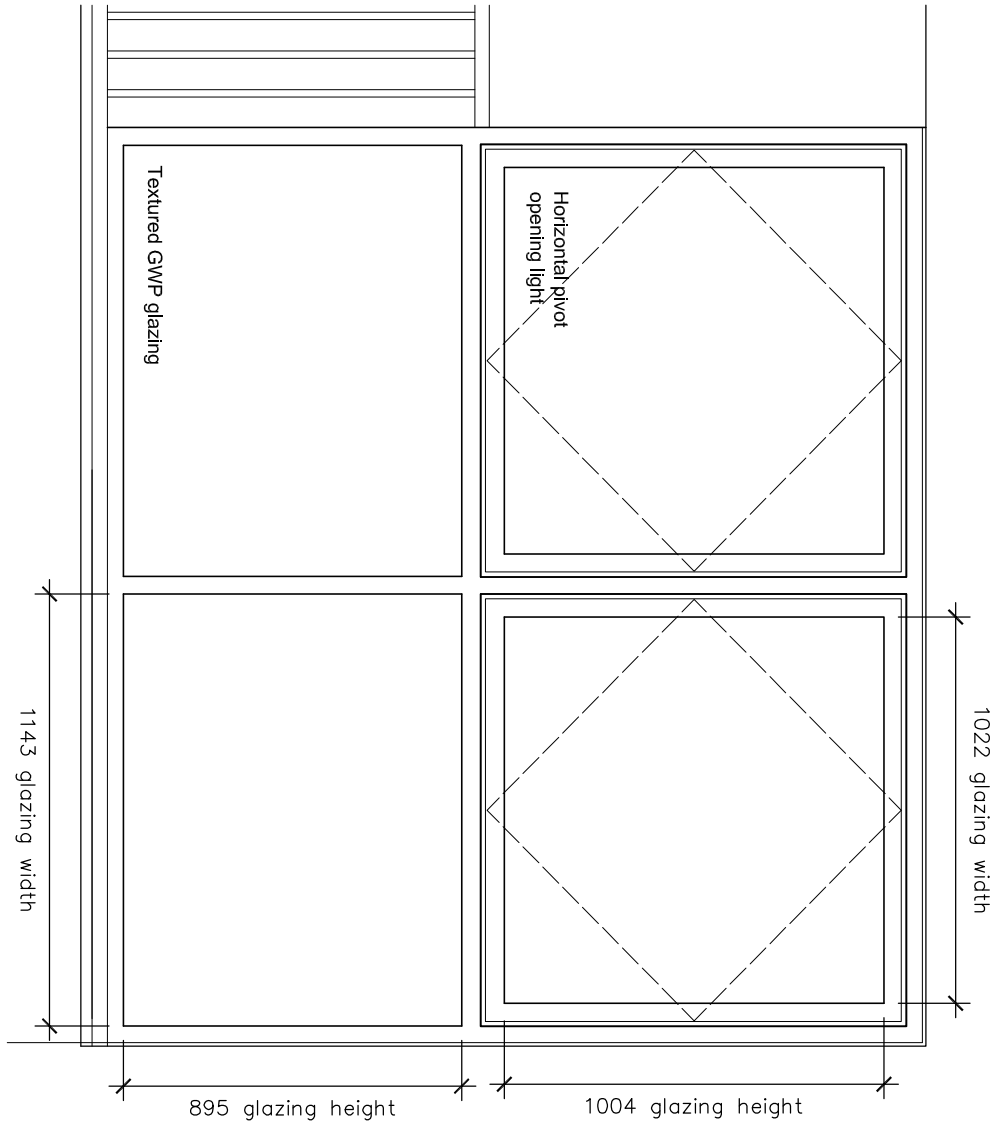


Profiles compared:-  
Red line shows existing  
Solid black line shows proposed

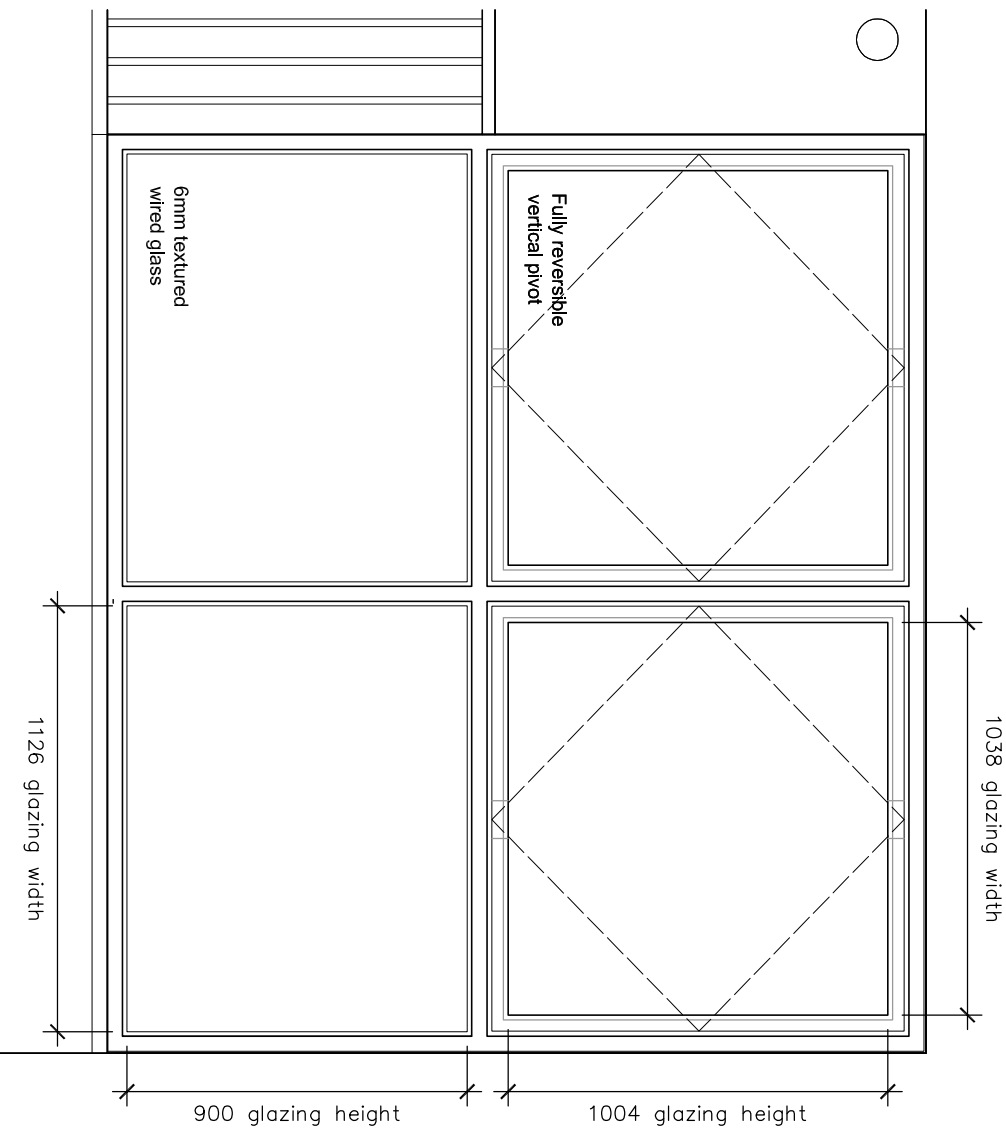
Details as existing

Details as proposed





Window assembly as existing



Window assembly as proposed

REVISION	DATE

16.02.18  
p1 first issue

Do not scale this drawing.  
All dimensions to be checked by the Contractor before construction proceeds.  
© Randall Shaw Billingham

**RANDALL SHAW BILLINGHAM**  
Acolicists Energy Consultants Planners  
54 Harcombe Road London N16 0SA  
e-mail: rsb@randallshaw.co.uk  
tel: 020 7254 7472

JOB TITLE  
**CAMDEN MAJOR REPAIRS**

DWG TITLE  
**HADDO HOUSE  
GLAZED SCREEN  
COMPARATIVE  
ELEVATIONS**

SCALE 1:20 @ A3 DWM kr  
DATE 2/18 CHK bs  
DWG NO 254/61 REV p1

