

ENTRANCE LOBBY
see dwg 3.102

RECEPTION

Residential
Flat

new frameless glass door
and fixed window panels -
to align with building (not
with steps)

no wall mounted
luminaires

new paving

new paving

retain steps configuration
as existing

Revisions:

D, 18.03.19	- Non Material Minor Amendment
C, 17.10.31	- Tender issue
B, 17.04.24	- revision
A, 17.03.13	- First Issue



Refer to Document Issue Sheet for status and purpose of issue.

Scale - 1:50@A3
1m 2m

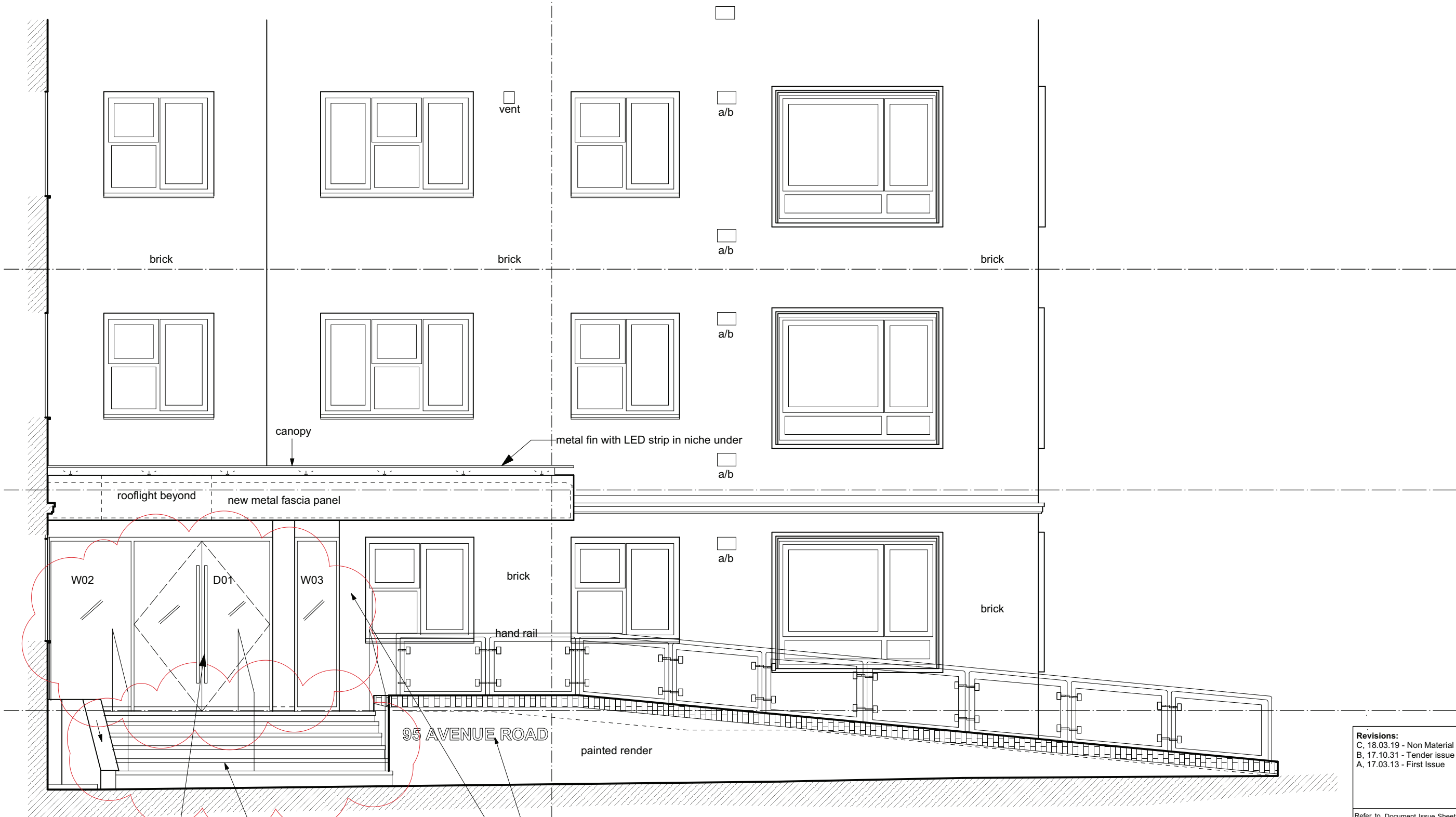
Entrance Remodelling,
95 Avenue Road, London NW8 6HY

Proposed Ground Floor Plan

224-1.006-D

© FINE architecture ltd
1 Westmoreland Terrace
London SW1V 4AG
T 08454 300 120
mail@finearchitecture.co.uk

510 E



new frameless glass door
and fixed window panels -
to align with building (not
with steps)

retain existing steps configuration
retain existing handrails
new pavers over steps and landing

metal letters with halo illumination
behind - see drawing 8.004

no wall luminaires

Revisions:
 C, 18.03.19 - Non Material Minor Amendment
 B, 17.10.31 - Tender issue
 A, 17.03.13 - First Issue

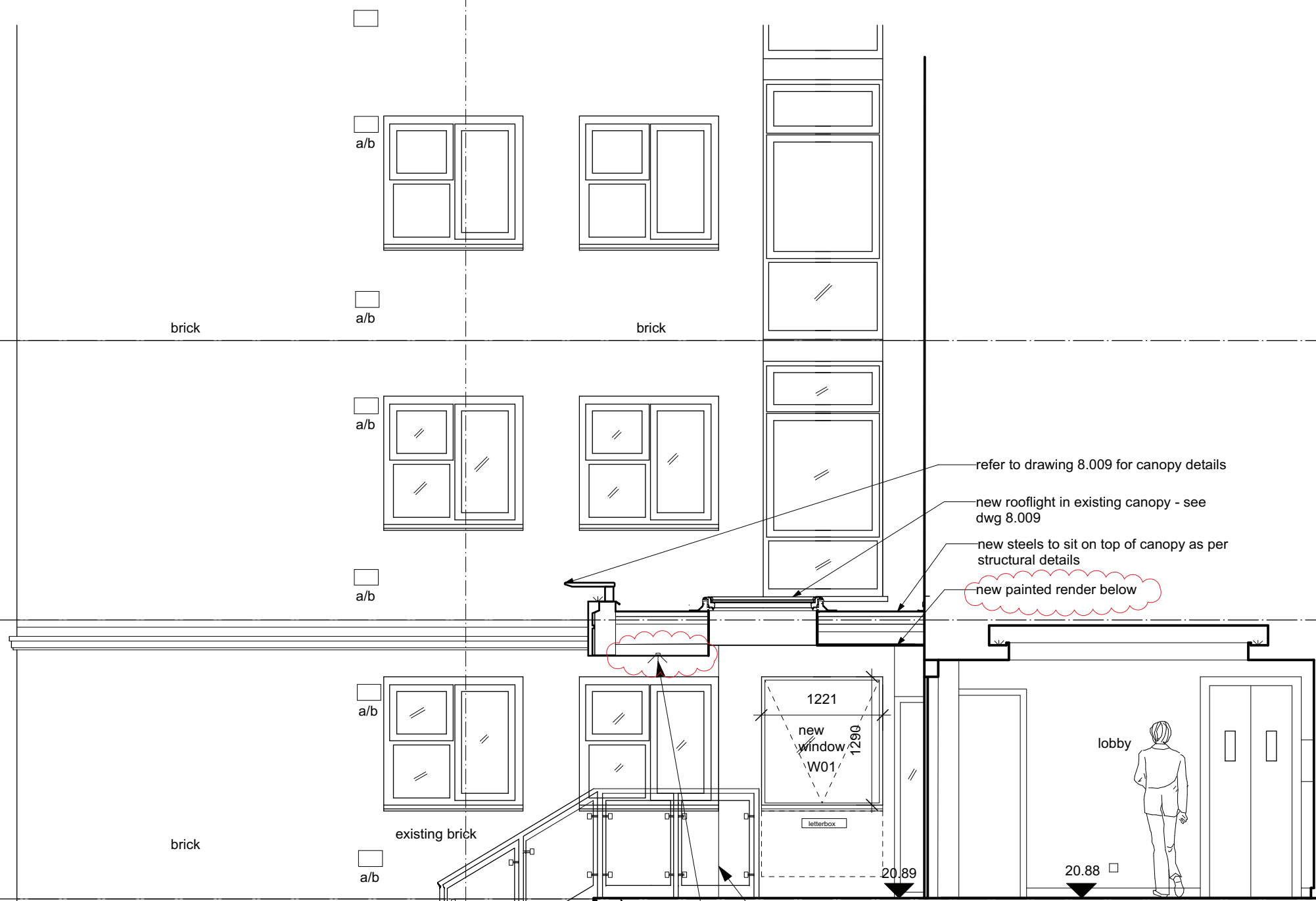
Refer to Document Issue Sheet for status and purpose of issue.

Scale - 1:50@A3
 1m 2m

**Entrance Remodelling,
 95 Avenue Road, London NW8 6HY
 Proposed East Elevation**

224-1.100-C

© FINE architecture ltd
 1 Westmoreland Terrace
 London SW1V 4AG
 T 08454 300 120
 mail@finearchitecture.co.uk



refer to drawing 8.009 for canopy details
 new rooflight in existing canopy - see dwg 8.009
 new steels to sit on top of canopy as per structural details
 new painted render below

portion of new wall and existing to be painted render until here

new downlighters instead of wall luminaires

new pavers over steps and landing

Revisions:
 C, 18.03.19 - Non Material Minor Amendment
 B, 17.10.31 - Tender Issue
 A, 17.03.13 - First Issue

Refer to Document Issue Sheet for status and purpose of issue.

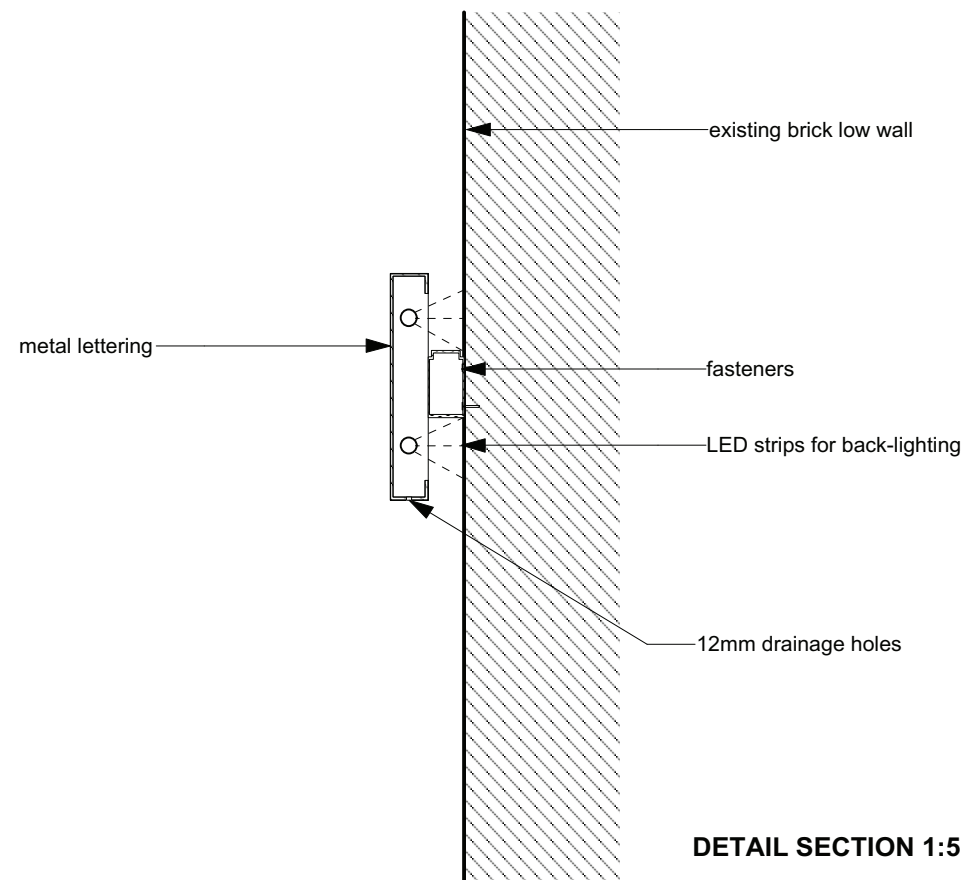
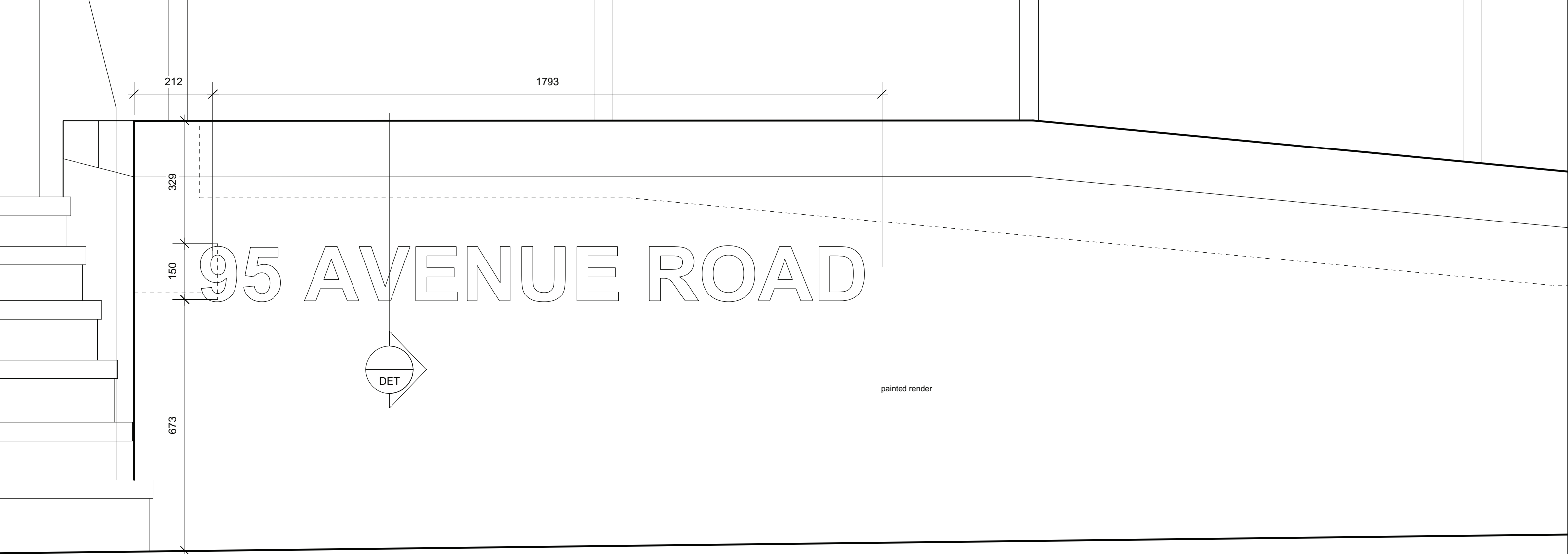
Scale - 1:50@A3

1m 2m

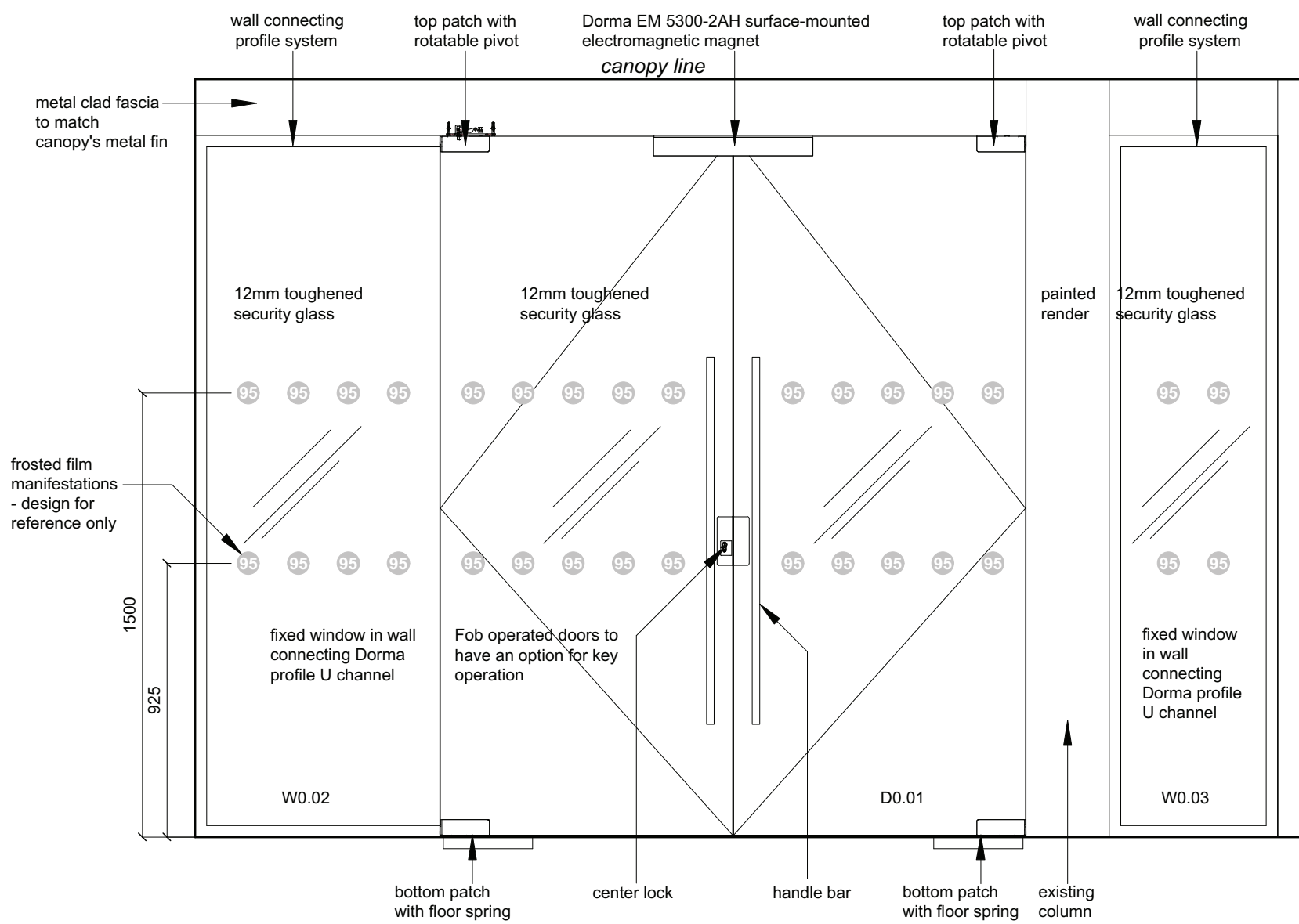
**Entrance Remodelling,
 95 Avenue Road, London NW8 6HY
 Proposed Section**

224-1.203-C

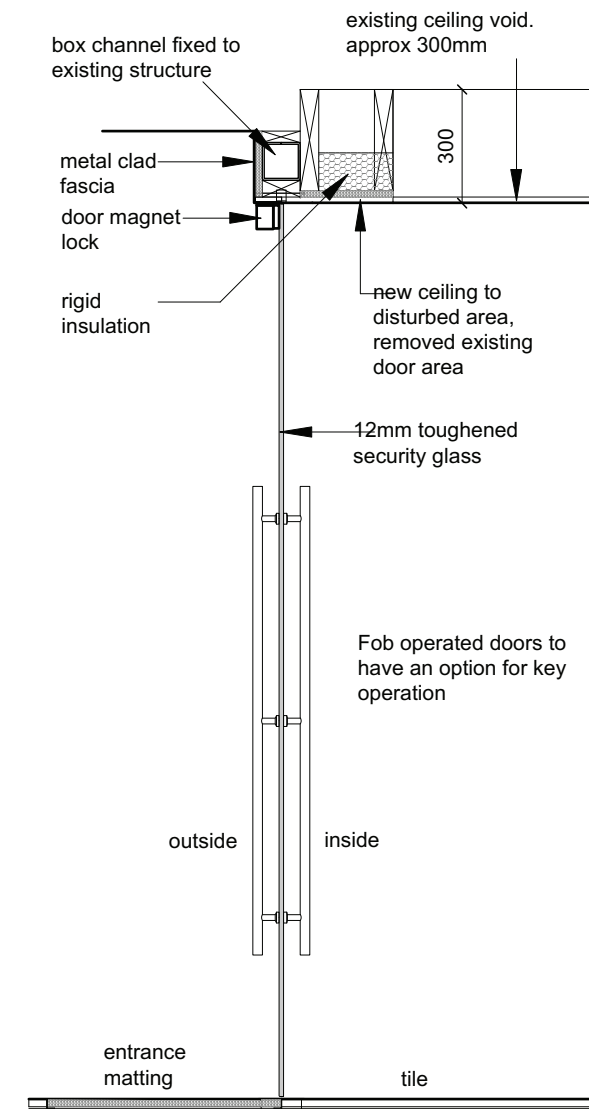
© FINE architecture ltd
 1 Westmoreland Terrace
 London SW1V 4AG
 T 08454 300 120
 mail@finearchitecture.co.uk



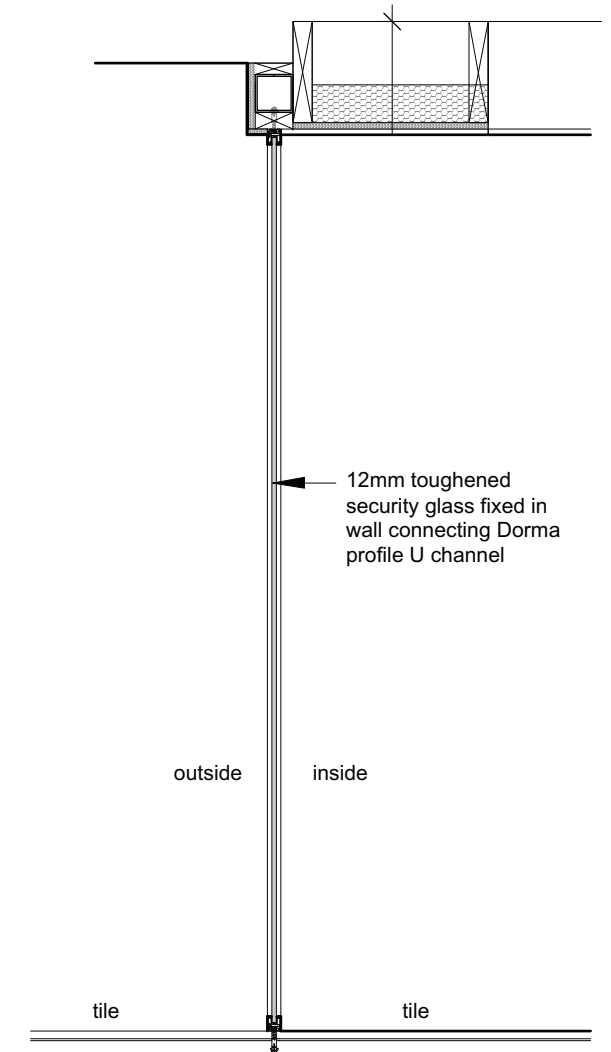
<p>Revisions: D, 18.03.19 - halo illumination only C, 17.10.31 - Tender issue B, 17.04.27 - revision A, 17.03.13 - First Issue</p>
<p>Refer to Document Issue Sheet for status and purpose of issue.</p>
<p>Scale 1:10 @ A3 0.25 m 0.5 m</p>
<p>Entrance Remodelling, 95 Avenue Road, London NW8 6HY</p>
<p>Signage Details</p>
<p>224-8.004-D</p>
<p>© FINE architecture ltd 1 Westmoreland Terrace London SW1V 4AG T 08454 300 120 mail@finearchitecture.co.uk</p>



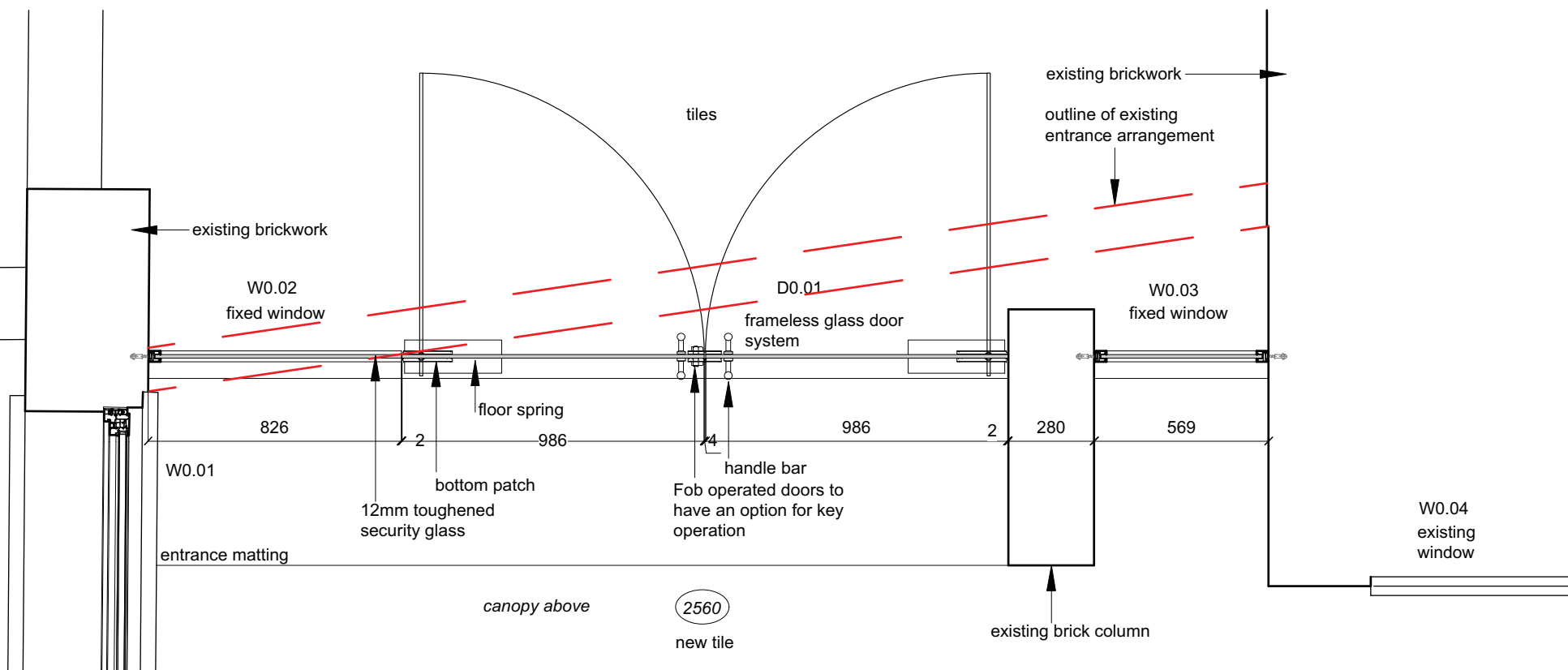
FRONT ELEVATION



DOOR SECTION



WINDOW SECTION



PLAN

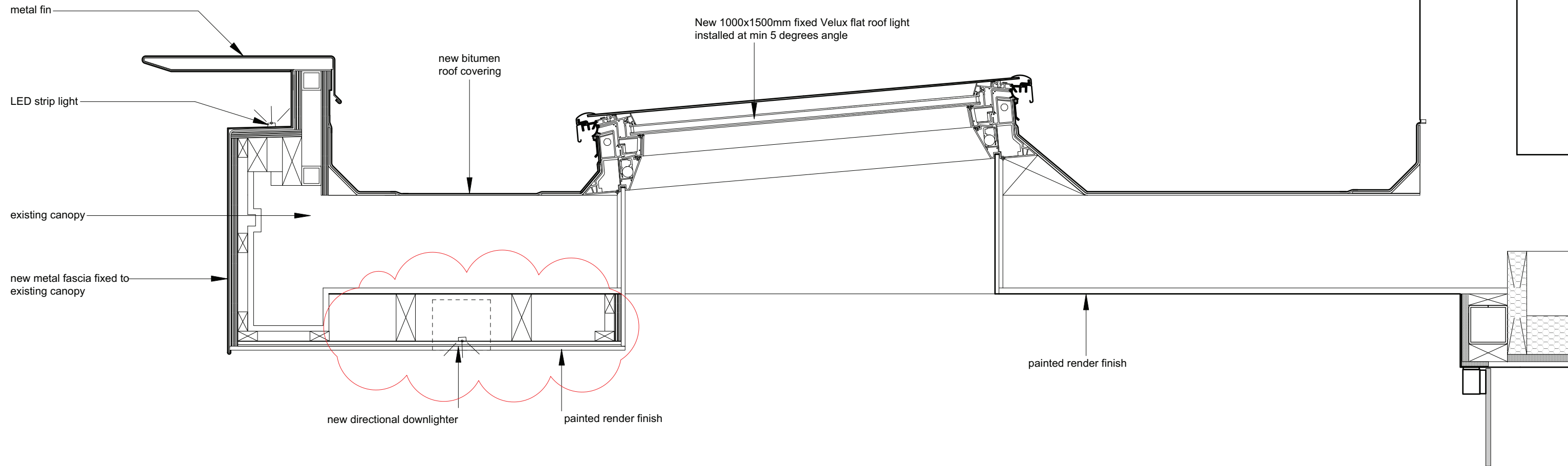
Notes:
 Patch fittings: Dorma Mundus for 12mm thick glass, refer to manufacturer's type selection diagram for correct fittings.
 Dimensions to be checked on site

Revisions:
 A, 2017.06.21 - First Issue
 B, 2017.10.24 - Amendments
 C, 2017.11.02 - Amendments

Refer to Document Issue Sheet for status and purpose of issue.
Scale - 1:20@A3

**Minor Alterations to Entrance
 95 Avenue Road London NW8 6HY
 Entrance Door & Window
 Details
 224- 8.005-C**

© FINE architecture ltd
 1 Westmoreland Terrace
 London SW1V 4AG
 T 08454 300 120 F 08454 300 129
 mail@finearchitecture.co.uk



Notes:
 roof light installation is subject to structural engineer's structure support details

Revisions:
 D, 2018.03.19 - downlighter
 C, 2017.11.02 - Amendments
 B, 2017.10.24 - Amendments
 A, 2017.06.21 - First Issue

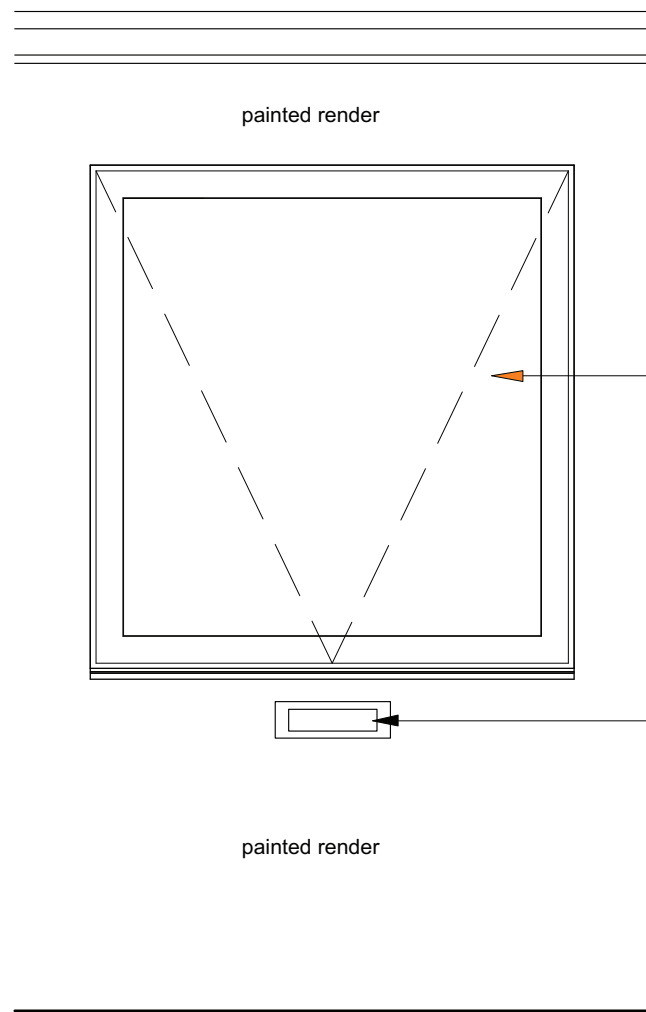
Refer to Document Issue Sheet for status and purpose of issue.

Scale - 1:10@A3

**Minor Alterations to Entrance
 95 Avenue Road London NW8 6HY
 Proposed canopy and
 rooflight section**

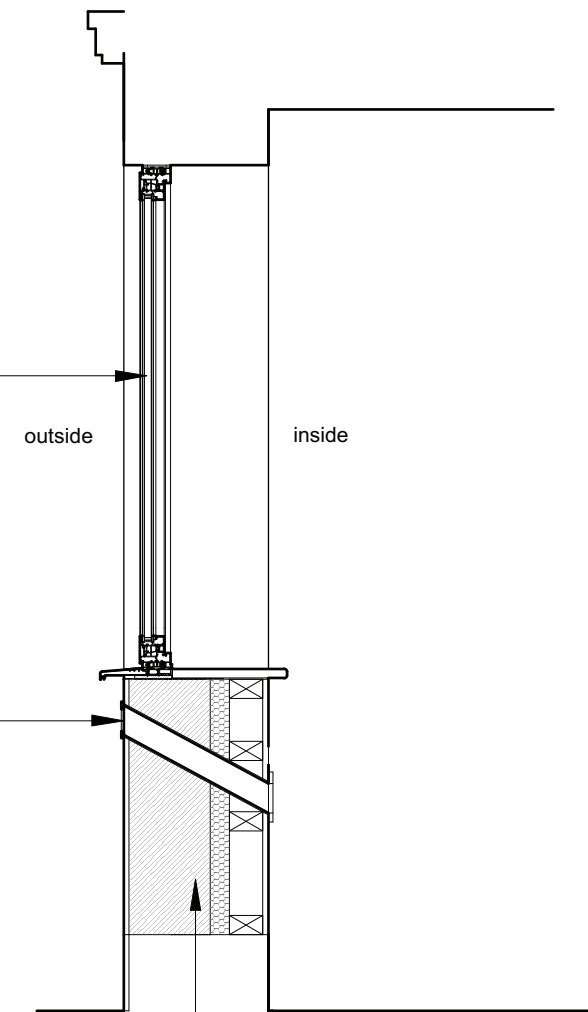
224- 8.008-D

© FINE architecture ltd
 1 Westmoreland Terrace
 London SW1V 4AG
 T 08454 300 120 F 08454 300 129
 mail@finearchitecture.co.uk

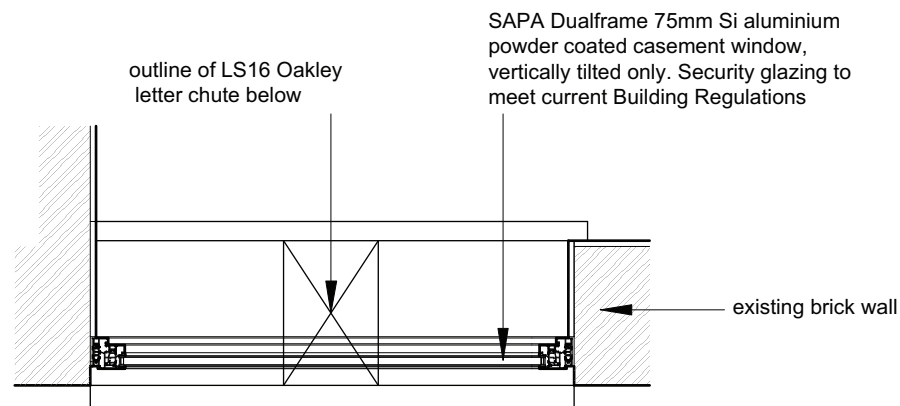


FRONT ELEVATION

SAPA Dualframe 75mm Si aluminium powder coated casement window, vertically tilted only. Security glazing to meet current Building Regulations



SECTION



PLAN

Notes:

Revisions:
 C, 2018.03.19 - Non Material Minor Amendment
 B, 2017.11.02 - Amendments
 A, 2017.06.21 - First Issue

Refer to Document Issue Sheet for status and purpose of issue.
Scale - 1:20@A3

**Minor Alterations to Entrance
 95 Avenue Road London NW8 6HY
 Window W0.01 Details**

224- 8.010-C
 © FINE architecture ltd
 1 Westmoreland Terrace
 London SW1V 4AG
 T 08454 300 120 F 08454 300 129
 mail@finearchitecture.co.uk