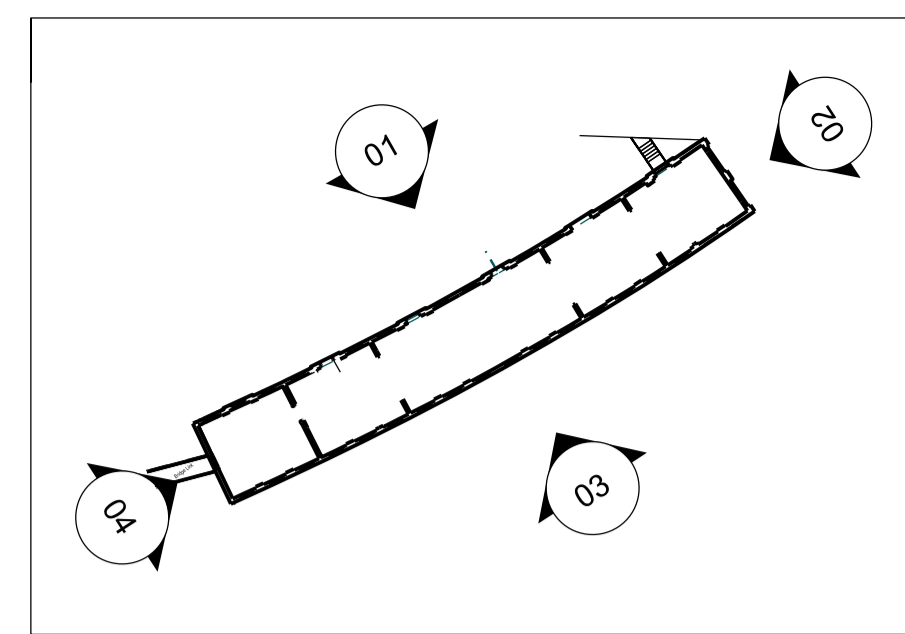
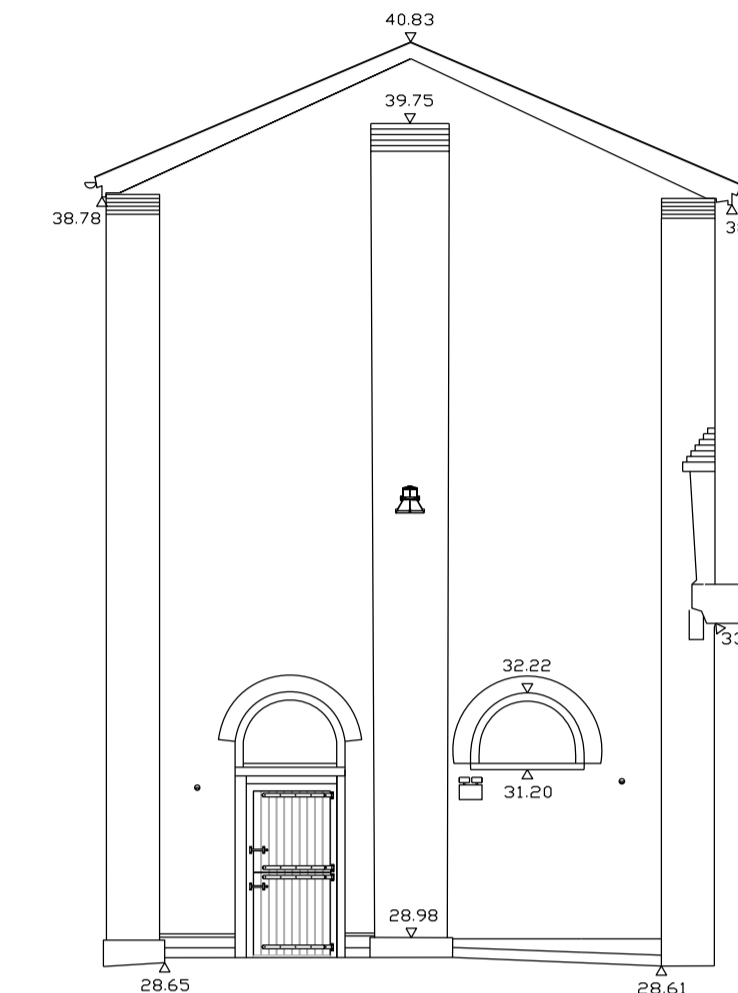


01 Provender South Elevation - As Proposed
1:100 A1

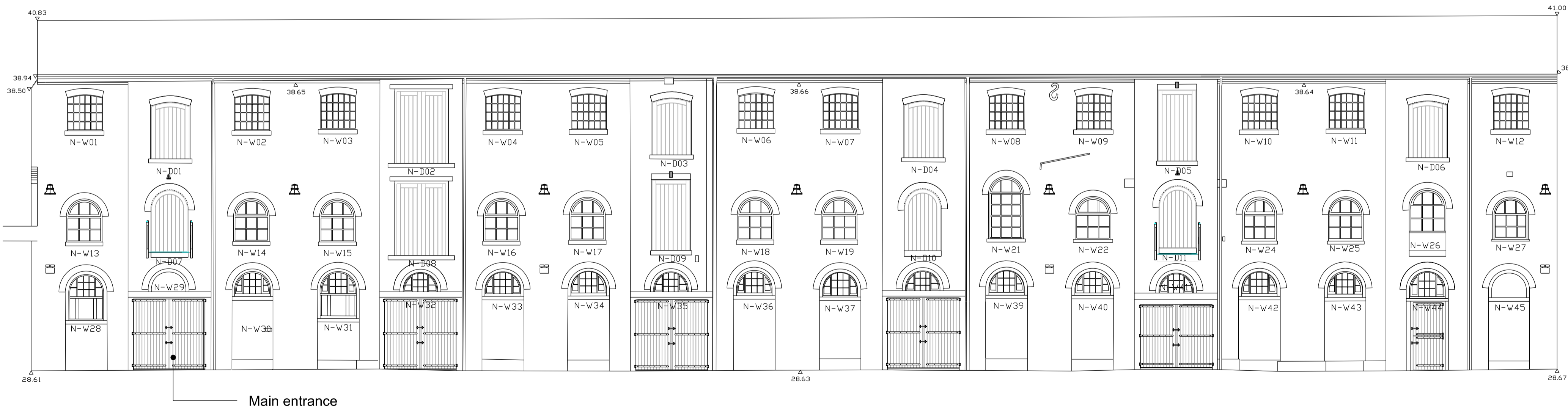


SVP connection made to existing pipework for proposed WC

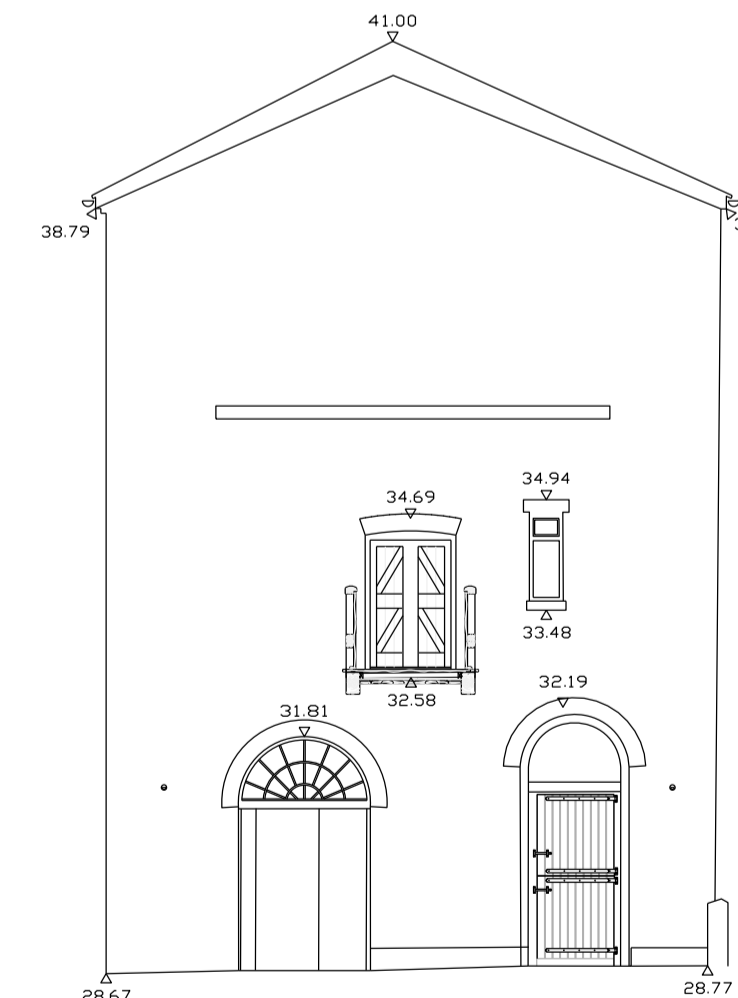
New 229x229 Heritage Airbrick Grille for proposed WC extract at first and second floor



02 Provender East Elevation
1:100 A1



03 Provender North Elevation - As Proposed
1:100 A1



04 Provender West Elevation
1:100 A1

Notes
This drawing is copyright Piercy&Company. Do not scale from this drawing. All dimensions and levels to be checked on site by the contractor and such dimensions to be his responsibility. Report all drawing errors, omissions and discrepancies to the architect.

DISCLAIMER
This document may be issued in an editable digital CAD format to enable others to use it as background information to make alterations and/or additions. In that instance the file will be accompanied by a PDF version as a record of the original file. It is for those parties making such alterations and/or additions to ensure that they make use of current background information.

Piercy&Company accepts no liability for either: any such alterations and/or additions to the background information by others; or any other changes made by others to the architectural content of the background information itself.

Piercy&Company have used their reasonable endeavours to establish the requirements of the Client during the design stages. The design stages represent an iterative process whereby the level of detail and the degree of precision included in the design increases from one stage to the next.

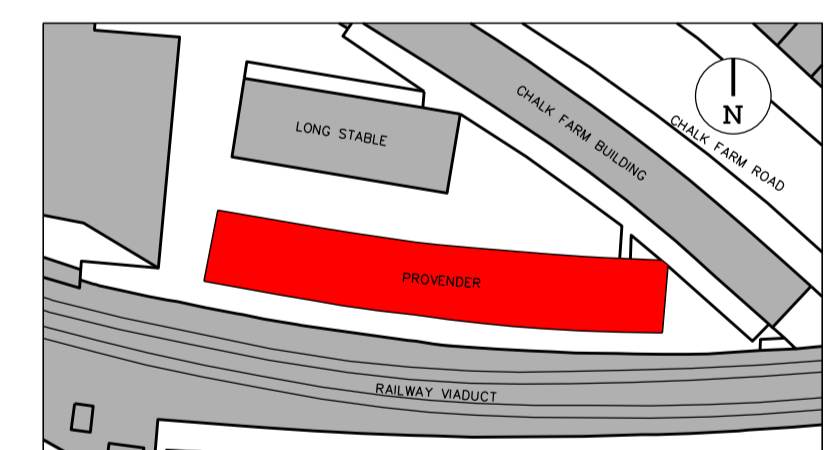
Following the guidelines given in Turner and Simister's Handbook of Project Management, which relate specifically to precision of cost estimates, and applying similar guidelines to the accuracy of all design, the following levels of accuracy could reasonably be achieved by the end of the respective design stages:

- RIBA Stage 2: ± 25%
- RIBA Stage 3a: ± 20%
- RIBA Stage 3b: ± 15%
- RIBA Stage 4: ± 5%

The Contractor should take into account the level of uncertainty indicated in the guidelines at the designated design stage of the project, and the Contractor should reflect the associated risk and uncertainty in their pricing.

The above precision figures do not include the effects of fundamental variations to the scale or nature of the project, however, they will reasonably be applied to quantities of systems, materials, associated and the final locations for equipment.

PLT	Date	Description
PL1	12.04.18	Planning Issue



Project
Camden Market: Provender Coworking

Client
CASTLEHAVEN ROW LIMITED - LABTECH

Date	Scale
12.04.18	1:100 at A1 1:200 at A3

Provender Building
Proposed Elevations

Drawn: CP Checked: CF Approved: HH

Drawing Status
For Planning

Project	Discipline	Level	Series	Dwg No	Rev
13534	A	LXX	04	100	PL1

39 Plender Street
London NW1 0DT

info@piercyandco.com
www.piercyandco.com

Telephone
+44 (0)2074249611

Piercy&Company

