

Notes

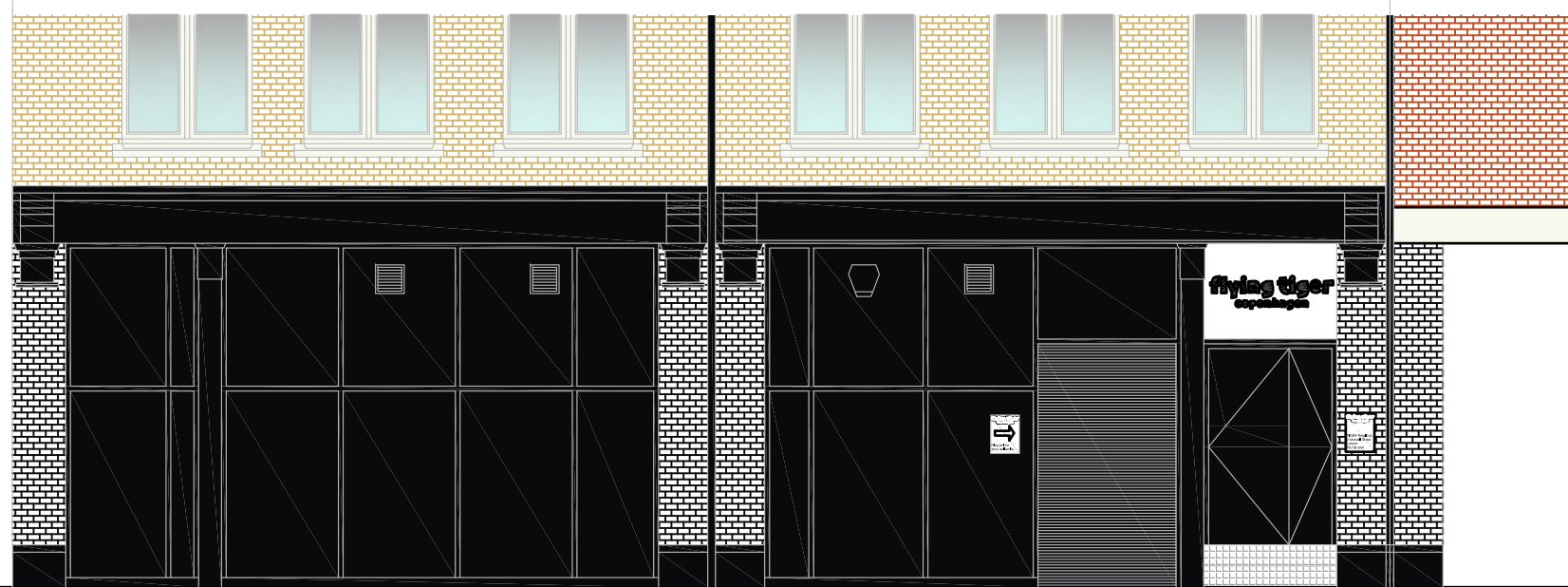
1. Overdoor sign to head office consisting of white powder coated aluminium fascia panel with black 'flying tiger' logo applied.
2. 2MM White powder coated aluminium pnaels with black vinyl lettering applied. Fitted with barrel fixings for stand-off mounting to substrate.



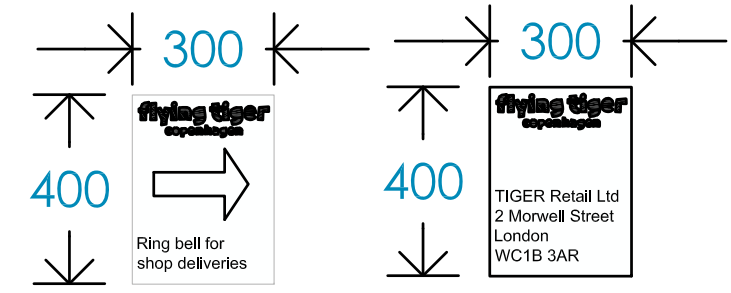
01 EXISTING REAR ELEVATION
 Scale: 1:75



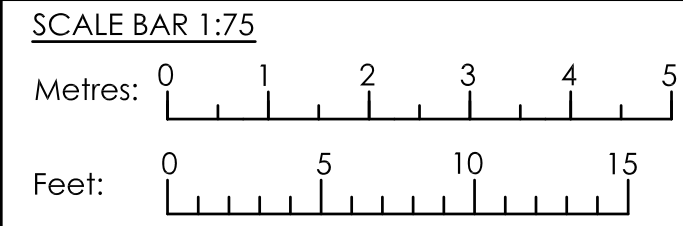
03 PROPOSED SIGNAGE DETAIL 1
 Scale: 1:20



02 PROPOSED REAR ELEVATION
 Scale: 1:75



04 PROPOSED SIGNAGE DETAIL 2
 Scale: 1:16



-	Initial Issue	28/03/18
Rev:	Amendment:	Date:

Newbury 1
 Centrix@Keys
 Keys Business Village
 Keys Park Road
 Hednesford
 Staffordshire
 WS12 2HA
 T: 01543 275101
 F: 01543 458278
 E: design@hlpuktd.net
 W: www.hlpuktd.net



flying tiger
 copenhagen

Contract
 241 - 242 Tottenham Court Road
 London
 W1T 7QX

Drawing Title
 Proposed Elevation

Dwg. no.	Rev.	Paper Size
HLP / 1060 / EN123 / 03	-	A3

Drawn	Date	Scale
MF	March 2018	1:75