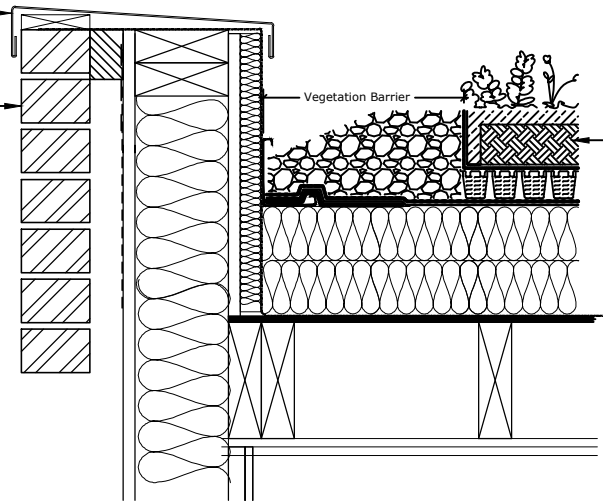


EPC COATED ALUMINIUM
COPING TO MATCH WINDOW
FRAME FINISH

FACING BRICKWORK, LONDON
STOCK BUFF F2 GRADE

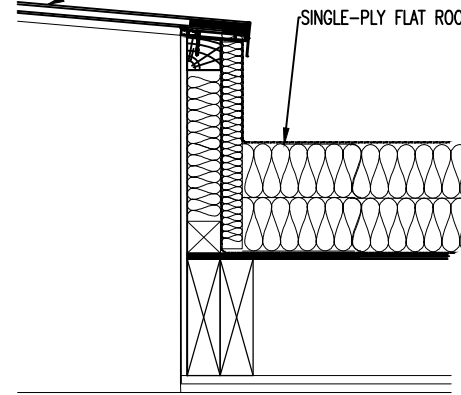
Vegetation Barrier

BIO-DIVERSE GREEN ROOF ON 100MM
SUBSTRATE GROWING MEDIUM.
WARM ROOF LAID TO FALLS

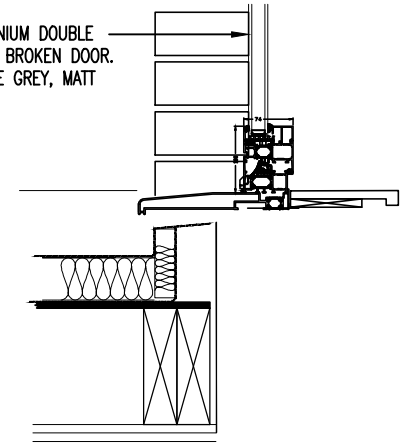


PPC COATED ALUMINIUM DOUBLE-GLAZED
ROOFLIGHT. LOCATED ON FLAT ROOF.
NOT VISIBLE FROM STREET

SINGLE-PLY FLAT ROOF

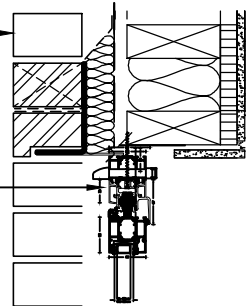


EPC COATED ALUMINIUM DOUBLE
GLAZED THERMALLY BROKEN DOOR.
COLOUR ANTHRACITE GREY, MATT



FACING BRICKWORK, LONDON
STOCK BUFF F2 GRADE

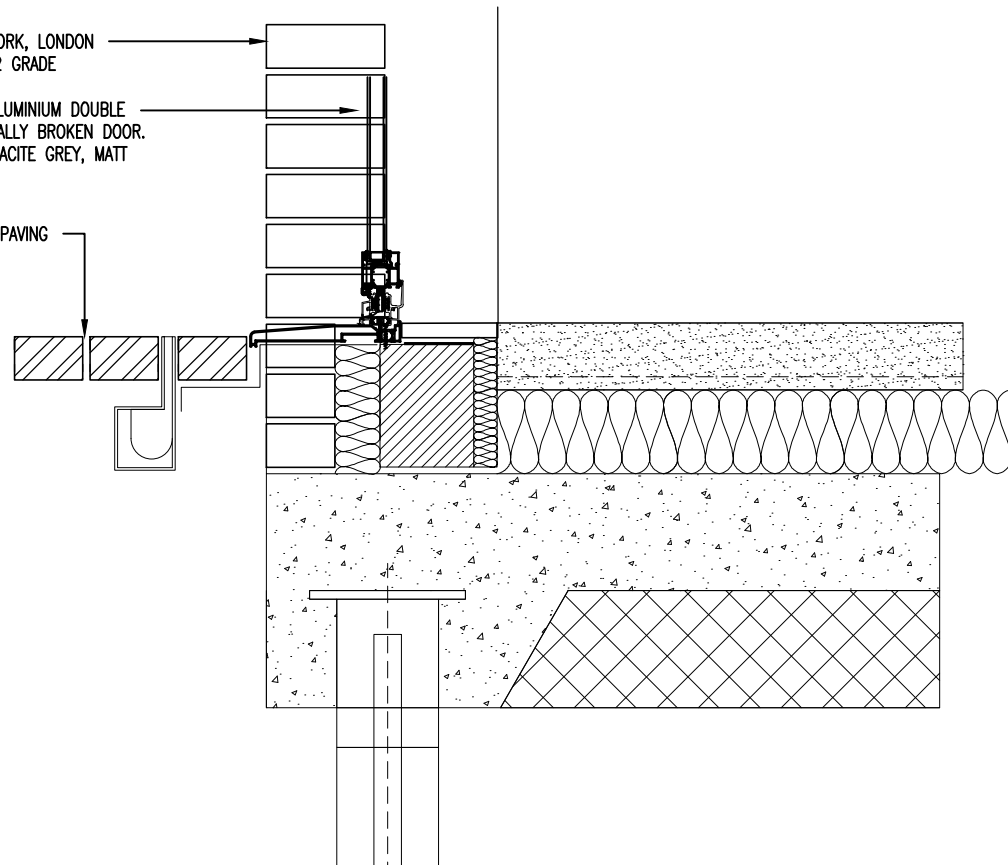
EPC COATED ALUMINIUM DOUBLE
GLAZED THERMALLY BROKEN
DOOR. COLOUR ANTHRACITE GREY,
MATT



FACING BRICKWORK, LONDON
STOCK BUFF F2 GRADE

EPC COATED ALUMINIUM DOUBLE
GLAZED THERMALLY BROKEN DOOR.
COLOUR ANTHRACITE GREY, MATT

YORK STONE PAVING



Drawing Status PROPOSED EXTERIOR DETAILS		Alan Morris Architect Unit 50 One Prince of Wales Road London NW5 3LW
Drawing Status PLANNING - APPROVAL OF DETAILS		
Scale 1:10 @ A3	Date MARCH 2018	Project Title R/O 27 LEIGHTON ROAD, NW5
Drawing Number 140-P-021	Rev -	