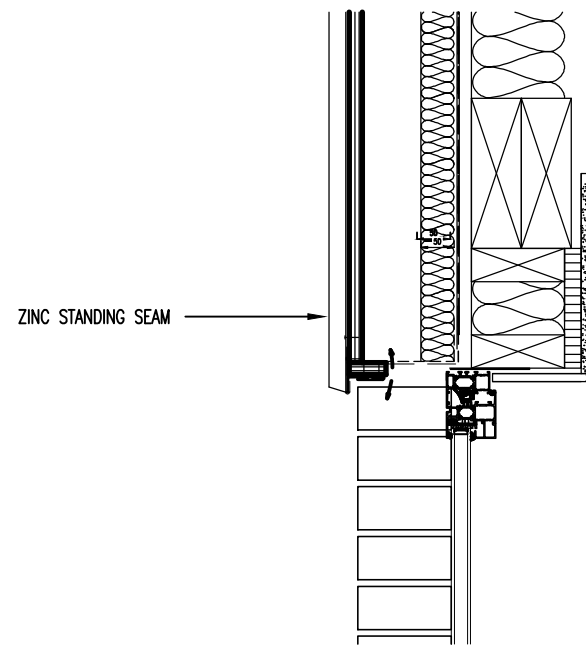
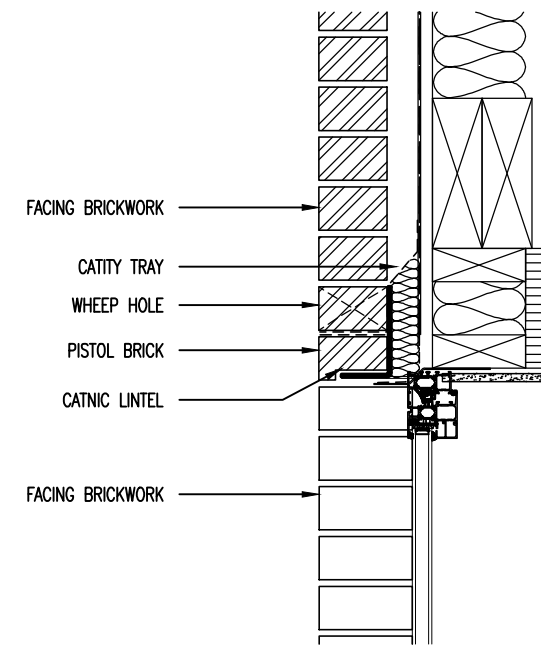


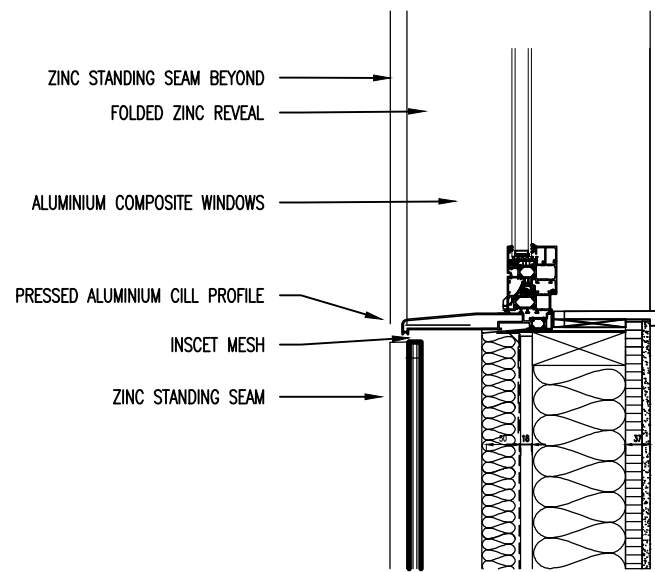
WINDOW HEAD DETAIL – OPENING IN ZINC



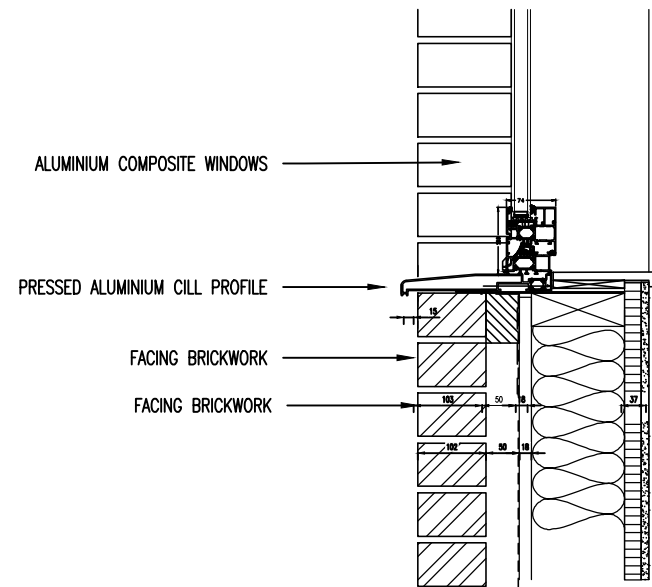
WINDOW HEAD DETAIL – OPENING IN ZINC & BRICK



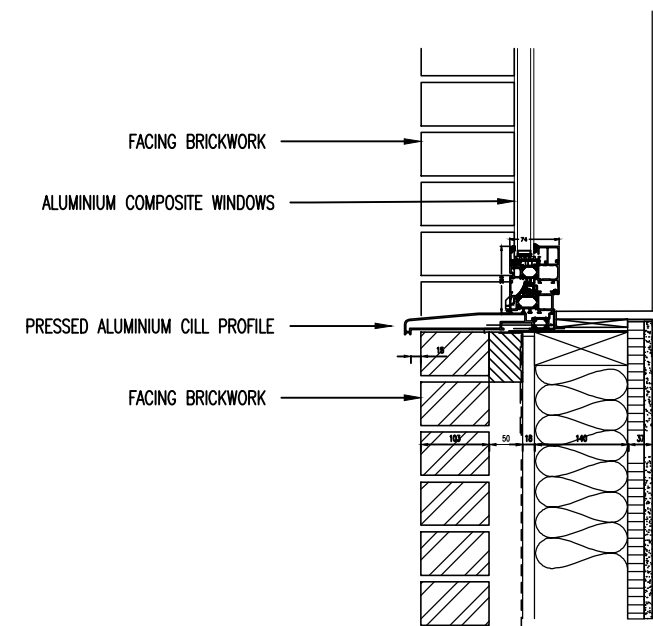
WINDOW HEAD DETAIL – OPENING IN BRICK



WINDOW CILL DETAIL – OPENING IN ZINC



WINDOW CILL DETAIL – OPENING IN ZINC AND BRICK



WINDOW CILL DETAIL – OPENING IN BRICK SKIN

Drawing Status <b>PROPOSED EXTERIOR DETAILS</b>		Alan Morris Architect Unit 50 One Prince of Wales Road London NW5 3LW Project Title <b>R/O 27 LEIGHTON ROAD, NW5</b>
Drawing Status <b>PLANNING - APPROVAL OF DETAILS</b>		
Scale <b>1:10 @ A3</b>	Date <b>MARCH 2018</b>	
Drawing Number <b>140-P-020</b>	Rev <b>-</b>	