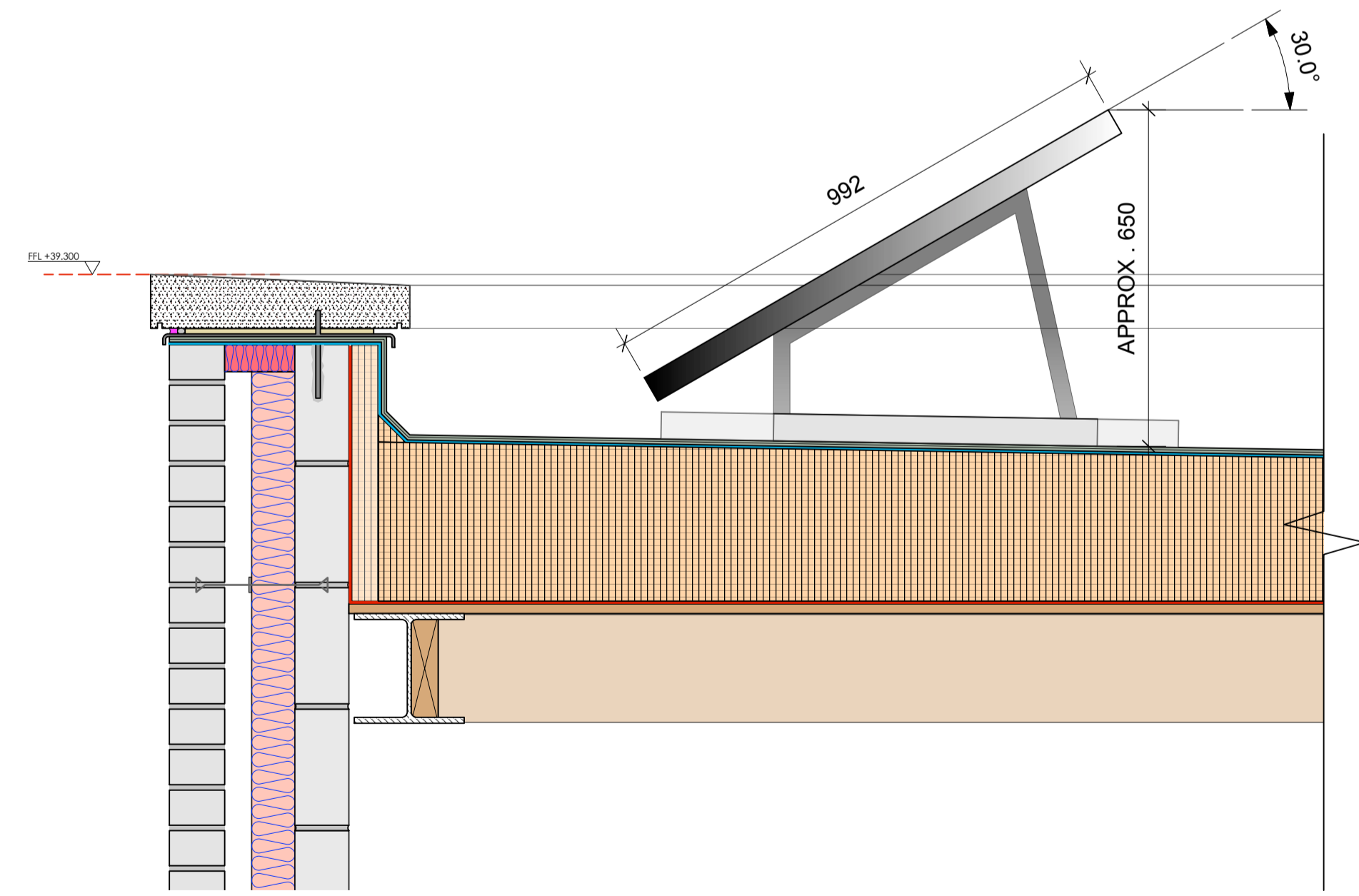
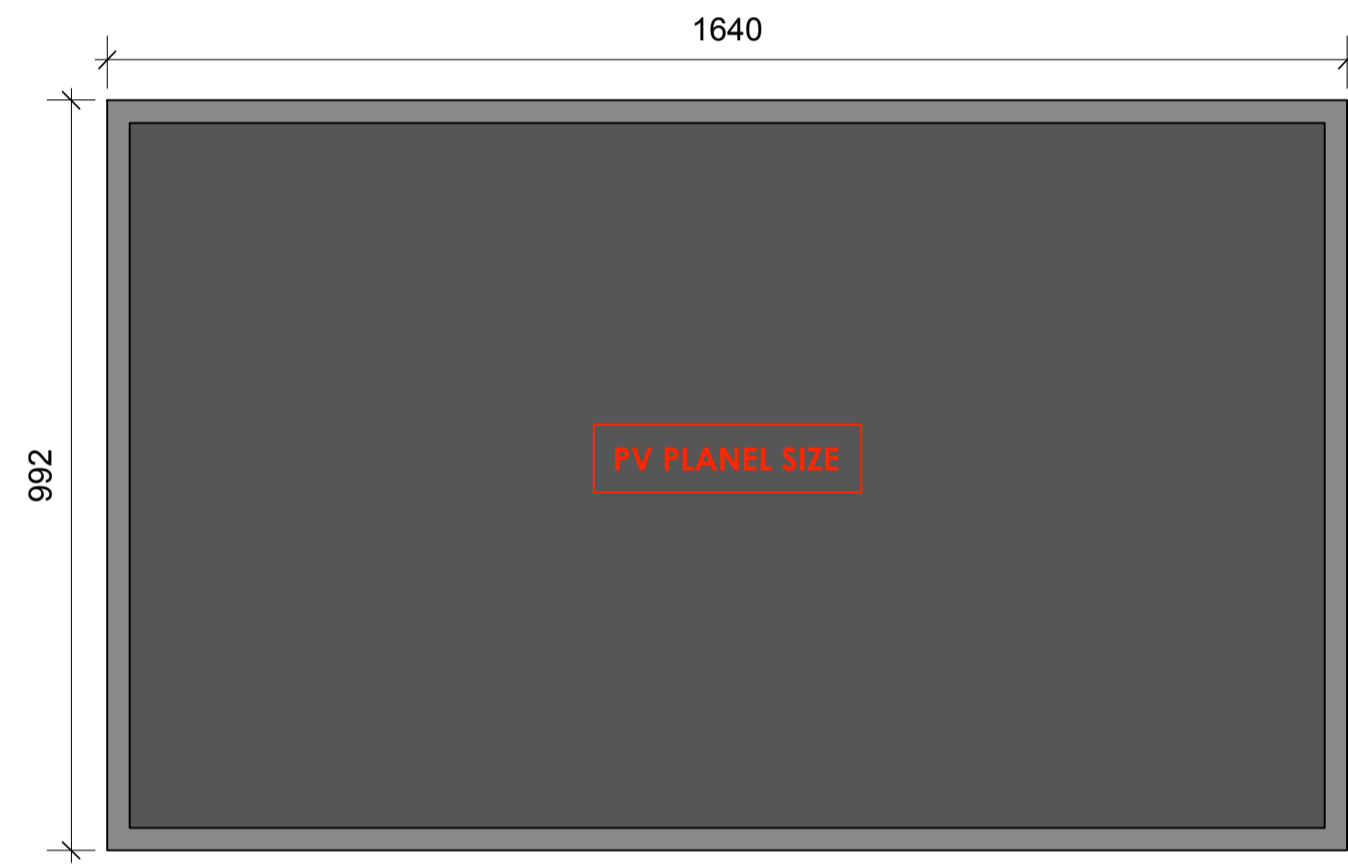
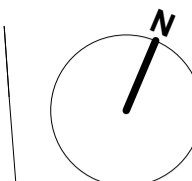
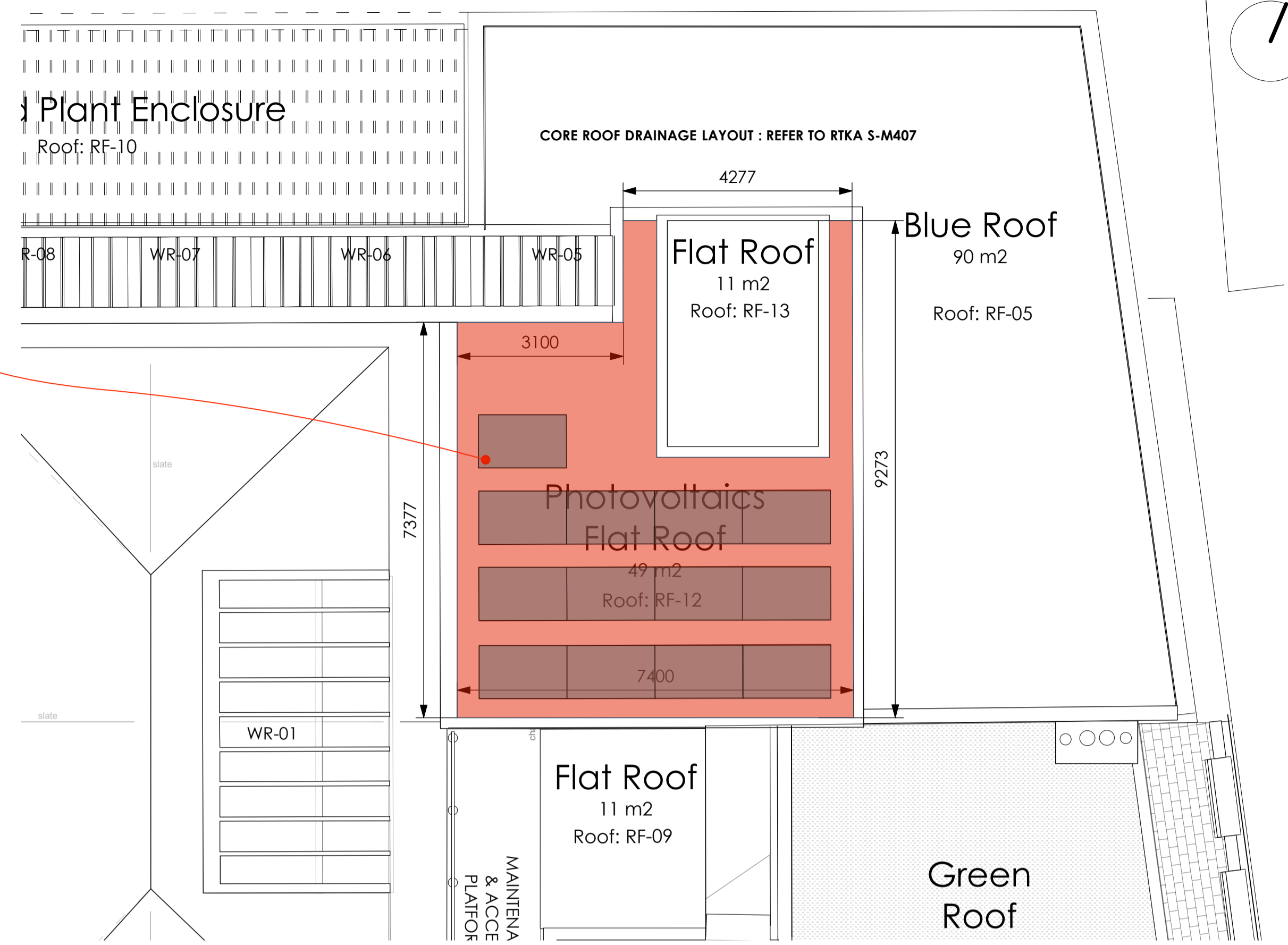


RF-12 (WITH PV PANELS) ROOF PLAN

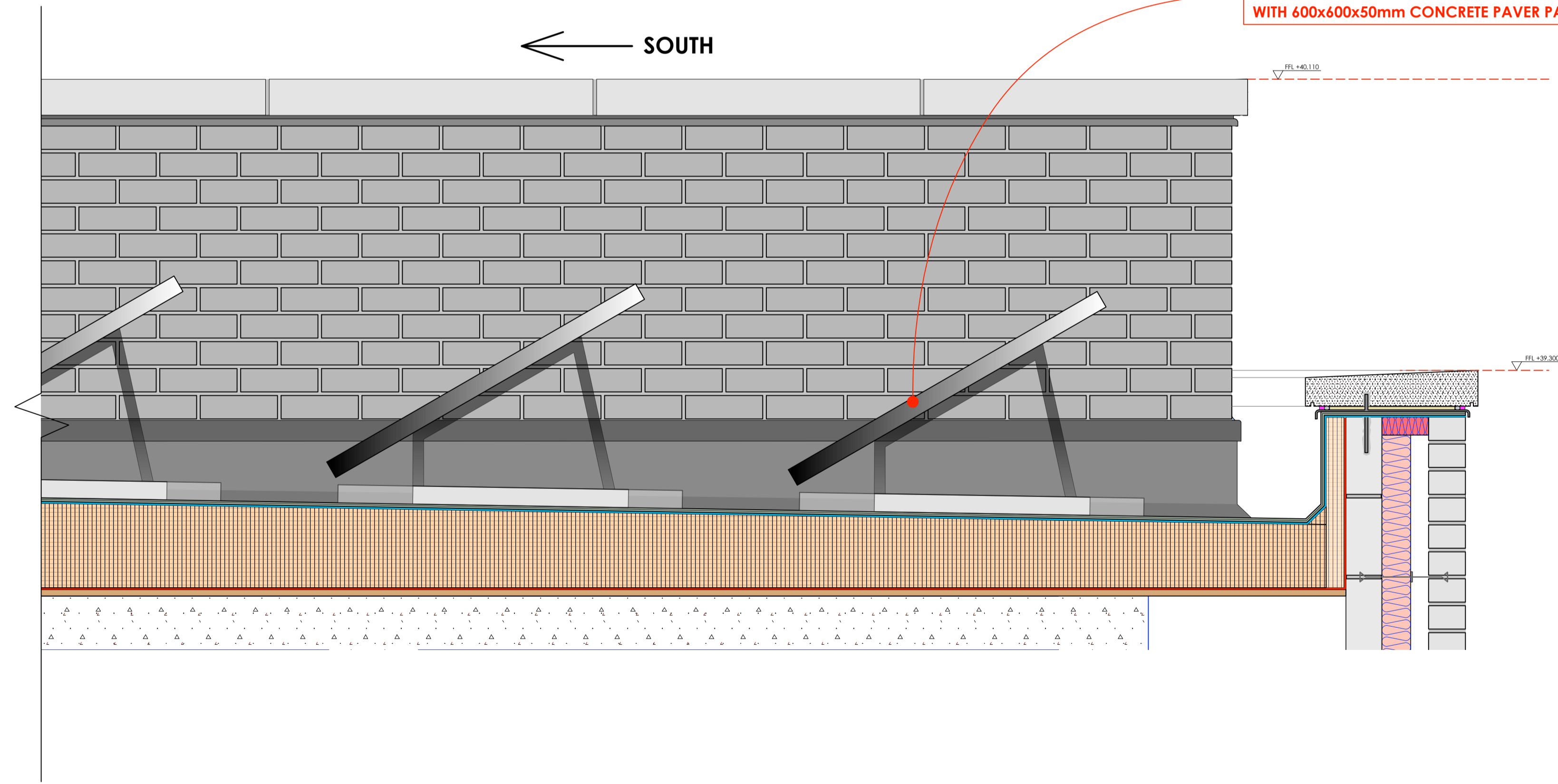
ROOF AREA : 49sqm
ROOF TYPE : FLAT ROOF (1:40-1:80 fall required)
SUPPORTING STRUCTURE : STEEL & TIMBER JOISTS and CONCRETE RC SLAB
WATER PROOFING LAYER : BITUMINOUS FELT
TOP LAYER : CONCRETE PAVERS ON PEDESTAL SUPPORT SYSTEM (TBC)
INSULATION LAYER : U-VALUE 0.13 W/m2K
TOTAL BUILD-UP ABOVE SSL : 320mm approx.



1:75



PANELS TO BE MOUNTED ON 30 DEGREE INCLINATION ON FLAT ROOF GALVANISED FRAMES WITH 600x600x50mm CONCRETE PAVER PALLASTS



Copyright: All rights reserved. This drawing must not be reproduced without permission.
 Only the original drawing should be relied upon. Contractors, subcontractors and suppliers must verify all dimensions on site before commencing any work or making any shop drawings.
 All shop drawings to be submitted to the architect for comment prior to fabrication.
 This drawing is to be read in conjunction with the Architect's specification, bills of quantities / schedules, structural, mechanical & electrical drawings and all discrepancies are to be reported to the architect.
 Do not scale from this drawing. Dimensions are in millimetres unless otherwise stated.

revision / date / amendments



PLANNING CONDITIONS

Archer Humphryes Architects
 Basement
 Central House
 142 Central Street
 London, United Kingdom
 EC1V 8AR
 T: +44 (0) 20 7251 8555

project title		scale	date
KOKO + Hope & Anchor + Bayham Place Camden, London		1:10 @A1	23.03.18
drawing title	drawn	checked	DA
Proposed PV Panels Details	PD	DA	DA
SHEET 2			
drawing number	revision		
AHA/KCC/PL/606	-		