

EXTERNAL ELEVATION
Scale 1:10

PLAN
Scale 1:10

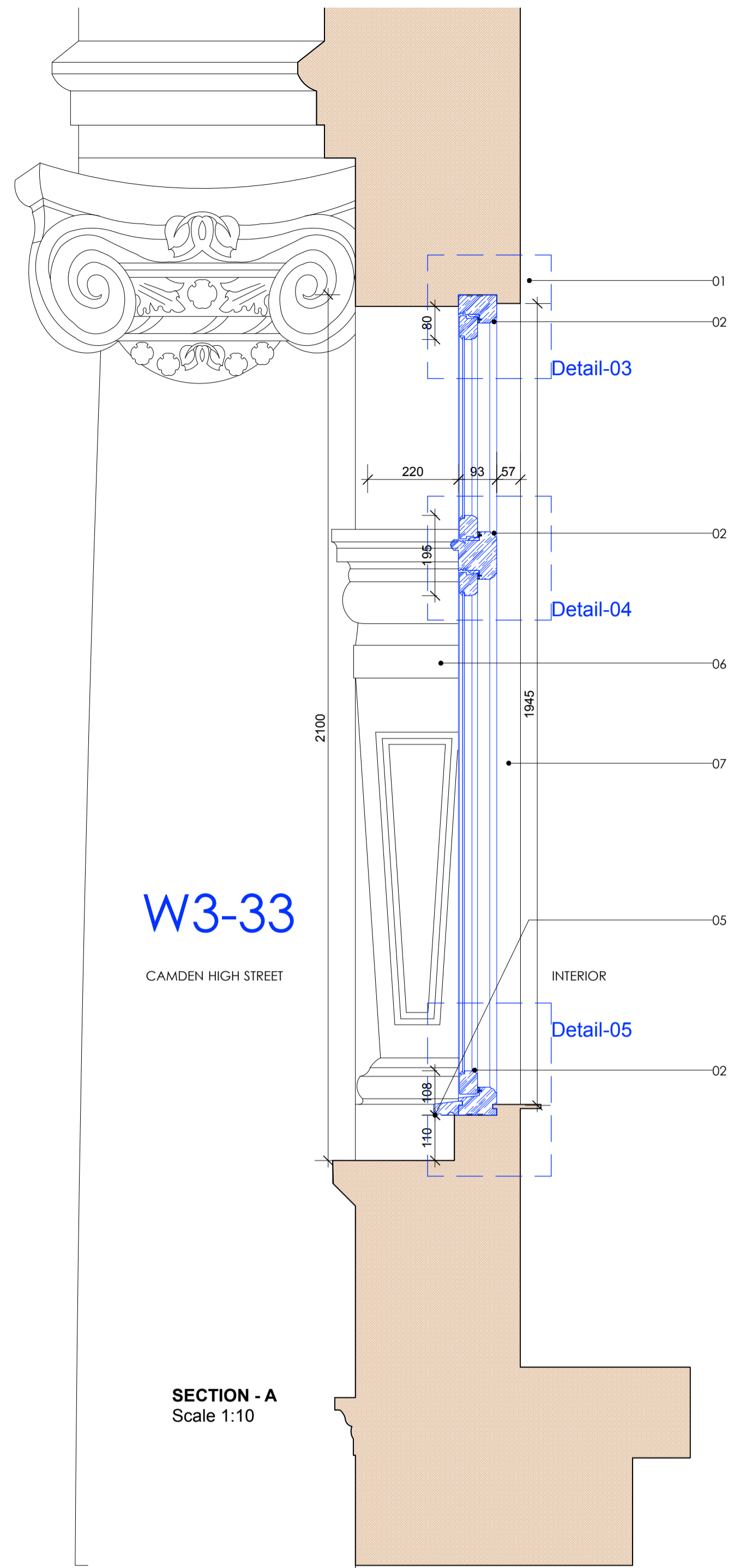
- LEGEND:**
- 01 - Engineered timber frame by Mumford and Wood
 - 02 - Historic ogee frame
 - 03 - Fixed window light
 - 04 - S/W packer
 - 05 - Timber cill TBD
 - 06 - Existing external stucco work to be made good
 - 07 - Existing internal wall lining to be made good

WINDOWS:

Window Numbers:
Refer to Window Schedule

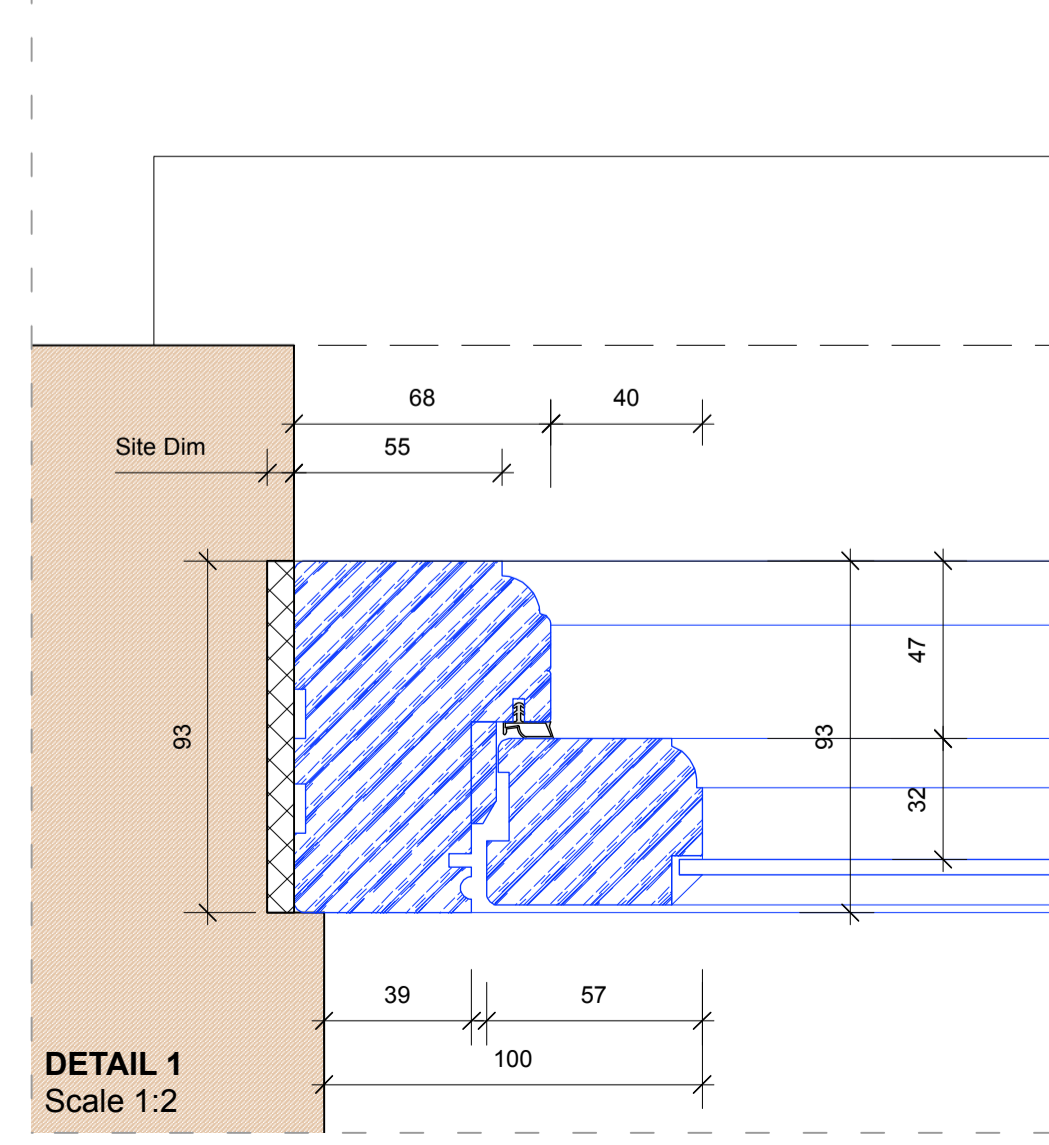
ATTCHMENTS:

60mm x 34mm Cill Extender with Window Board Groove
4mm Clear Toughened

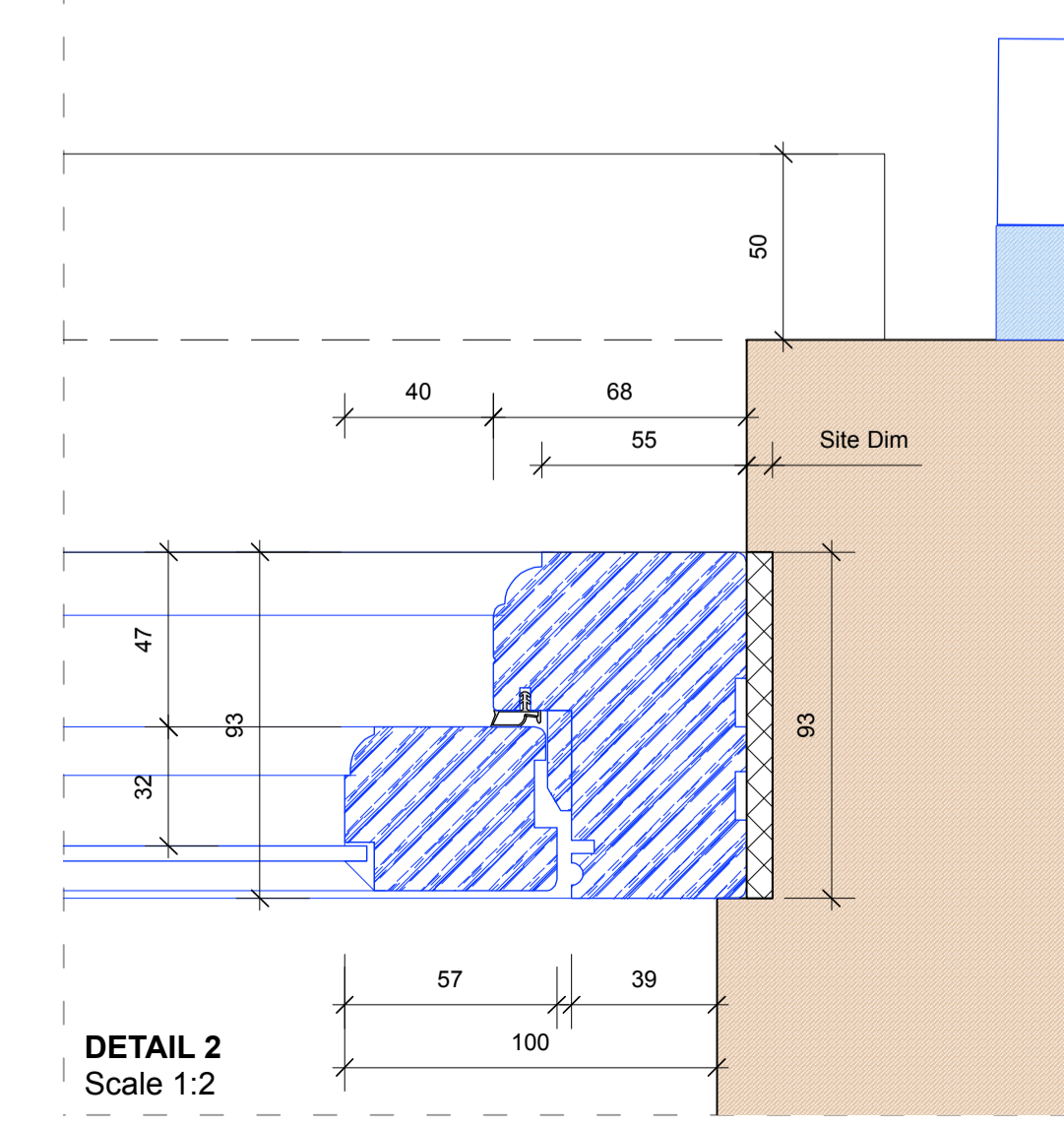


W3-33
CAMDEN HIGH STREET

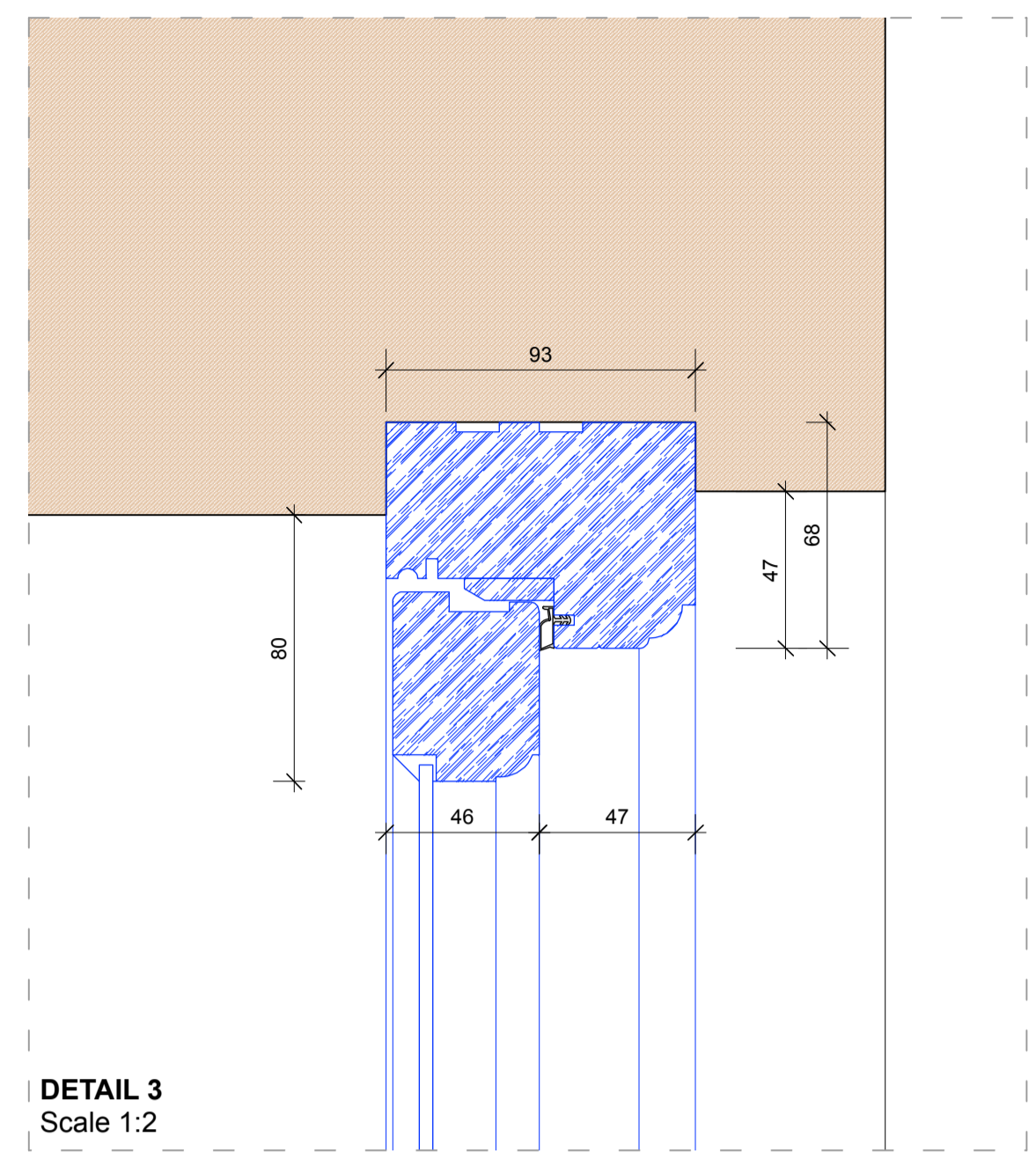
SECTION - A
Scale 1:10



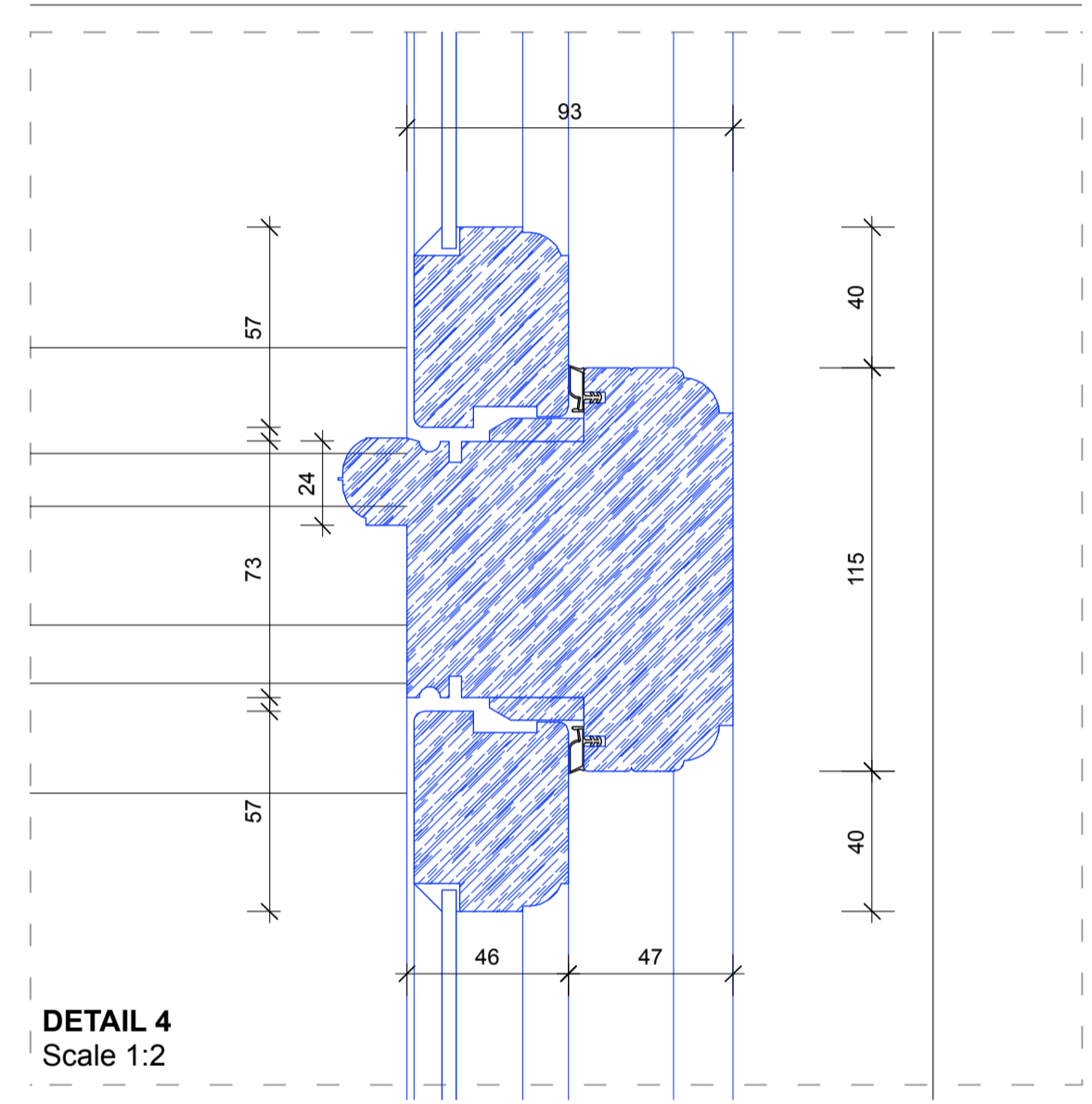
DETAIL 1
Scale 1:2



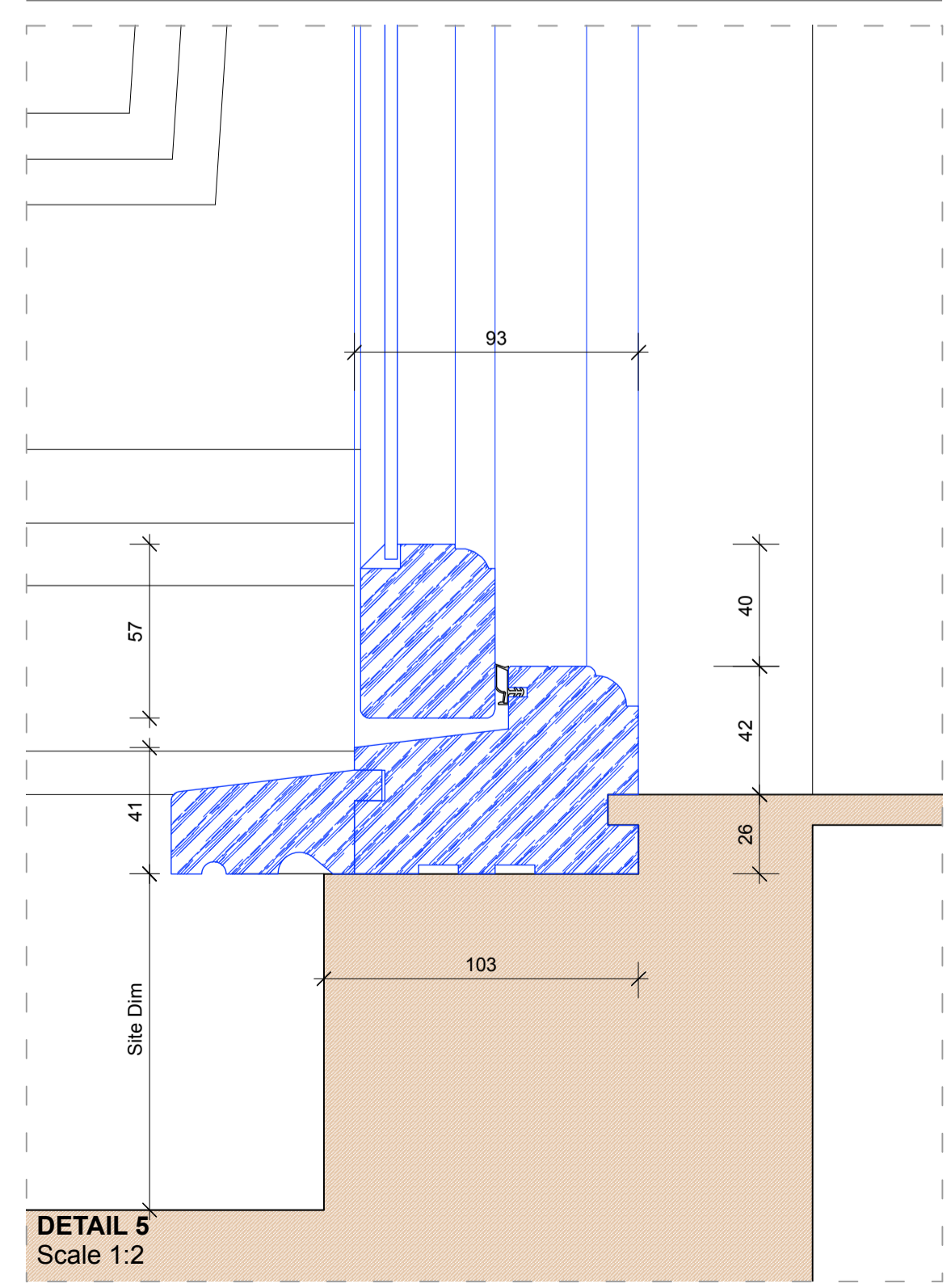
DETAIL 2
Scale 1:2



DETAIL 3
Scale 1:2



DETAIL 4
Scale 1:2



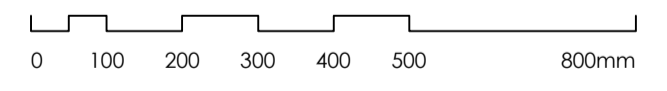
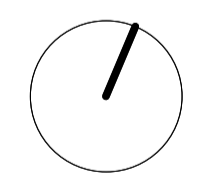
DETAIL 5
Scale 1:2

Copyright: All rights reserved. This drawing must not be reproduced without permission.
Only the original drawing should be relied upon. Contractors, subcontractors and suppliers must verify all dimensions on site before commencing any work or making any shop drawings.
All shop drawings to be submitted to the architect for comment prior to fabrication.
This drawing is to be read in conjunction with the Architect's specification, bills of quantities / schedules, structural, mechanical & electrical drawings and all discrepancies are to be reported to the architect.
Do not scale from this drawing. Dimensions are in millimetres unless otherwise stated.

revision / date / amendments
- / - / - / -

TYPE-G

22.03.18



STAGE 4

Archer Humphryes Architects

Basement
Central House
142 Central Street
London, United Kingdom
EC1V 8AR
T: +44 (0) 20 7251 8555

project title	scale	date
KOKO + Hope & Anchor + Bayham Place Camden, London	1:2	26.01.18
drawing title	drawn	checked
Typical Historic Casement Detail	RZ/PC	GA
Type G	revision	-
drawing number		
AHA / KCC / DET / 669		