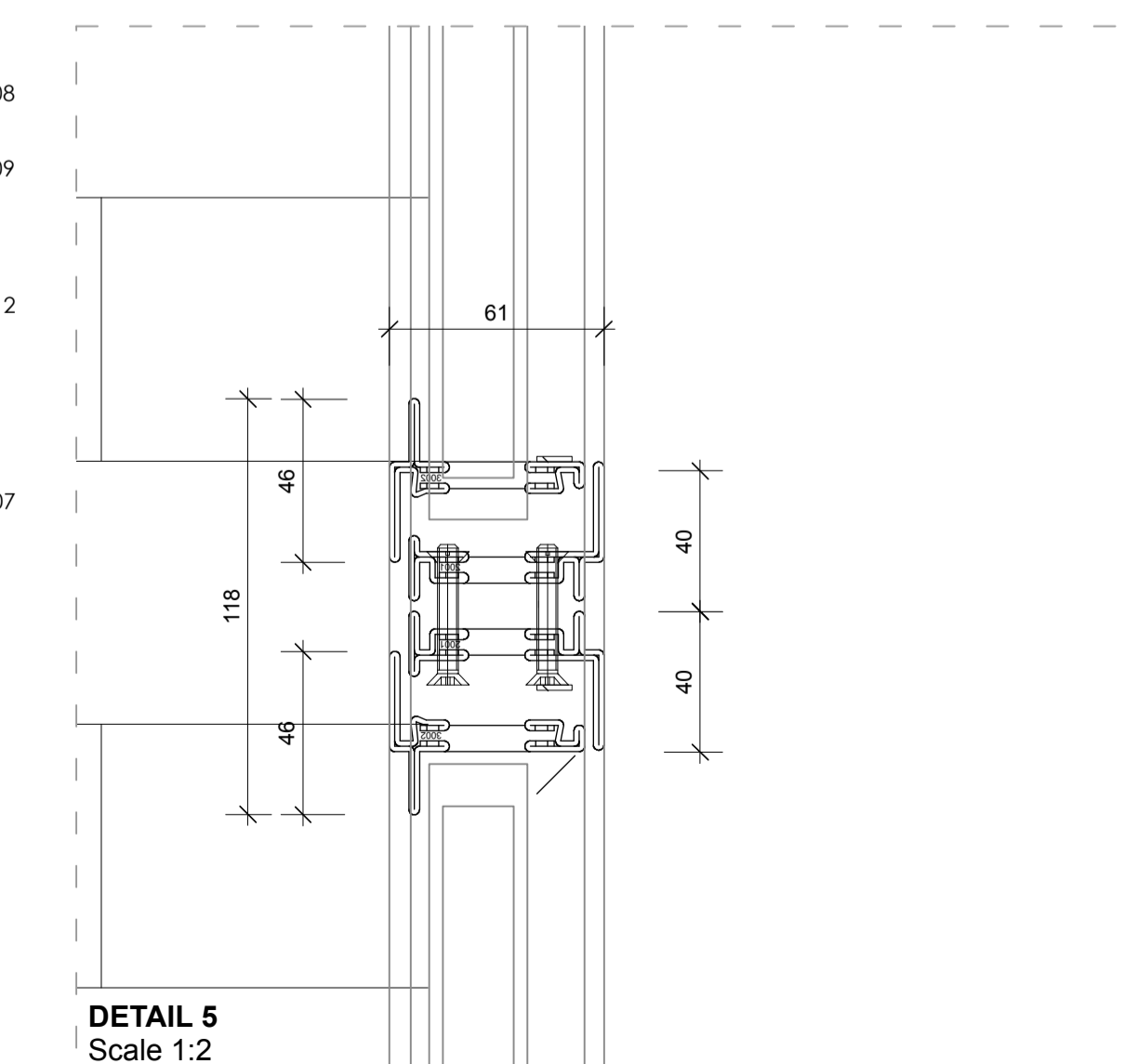
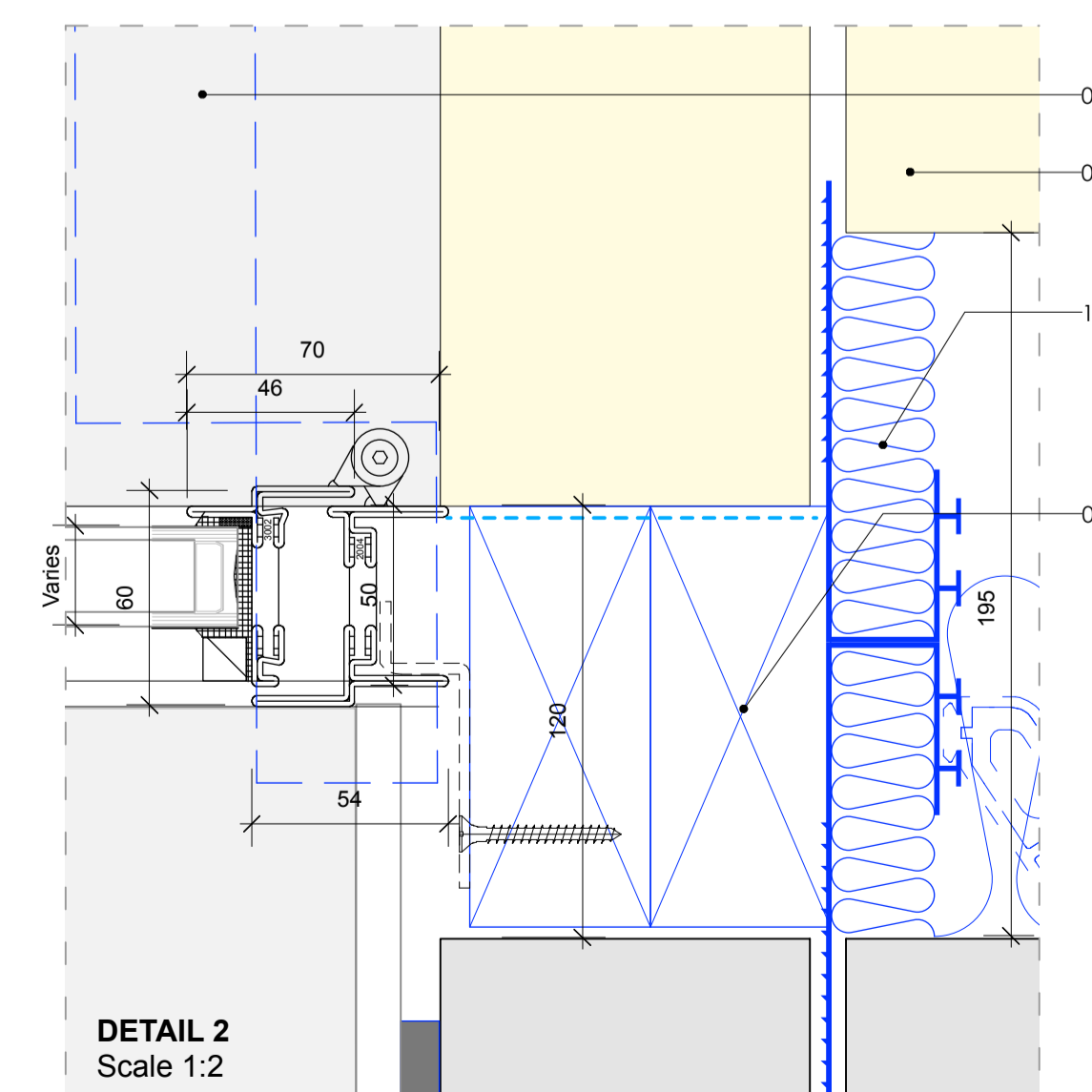
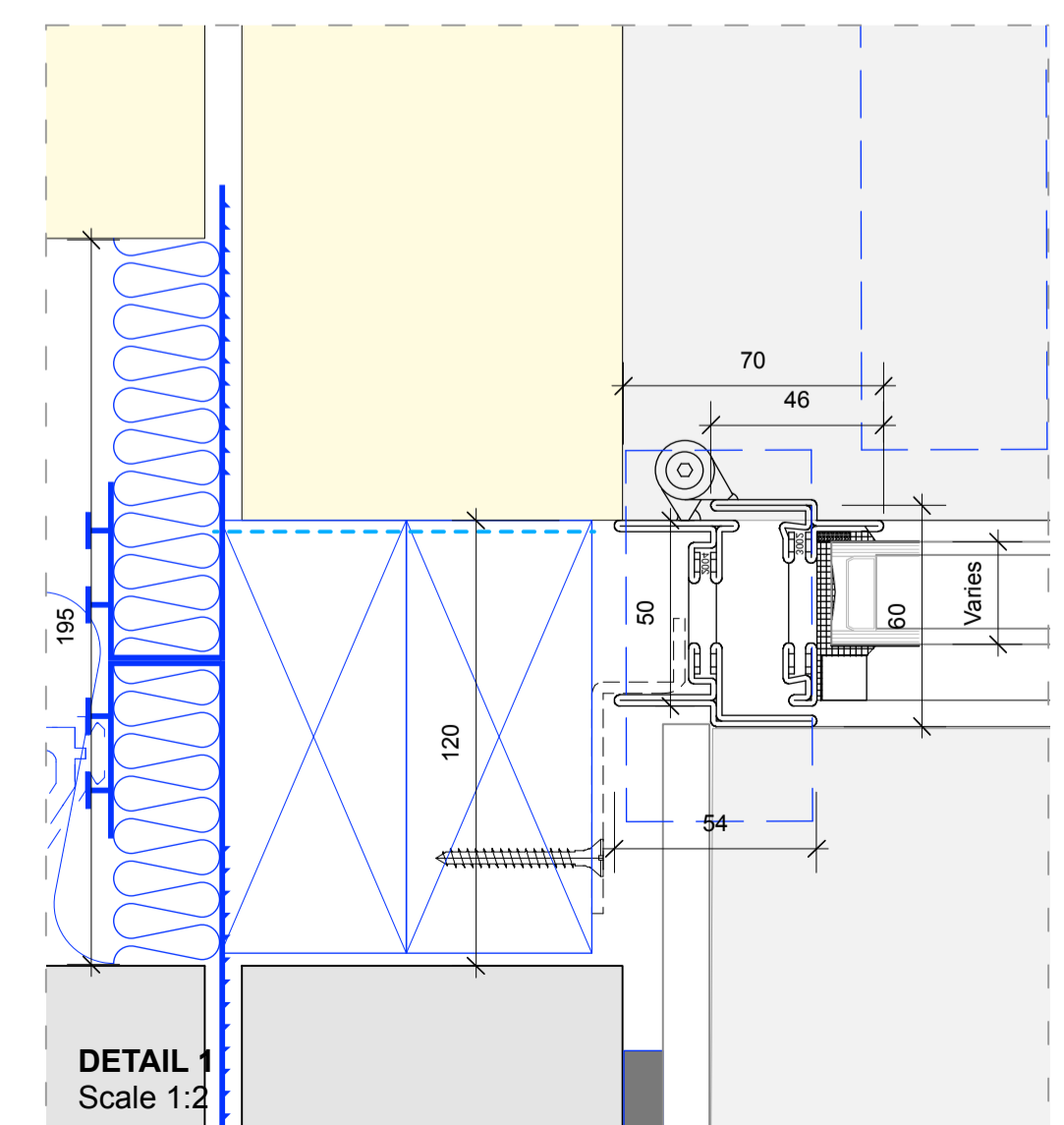
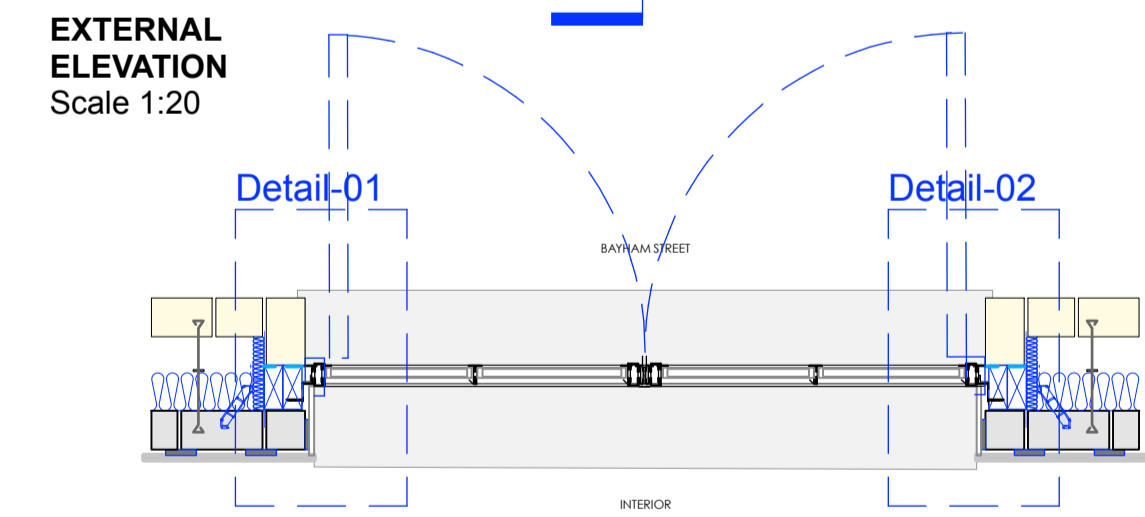
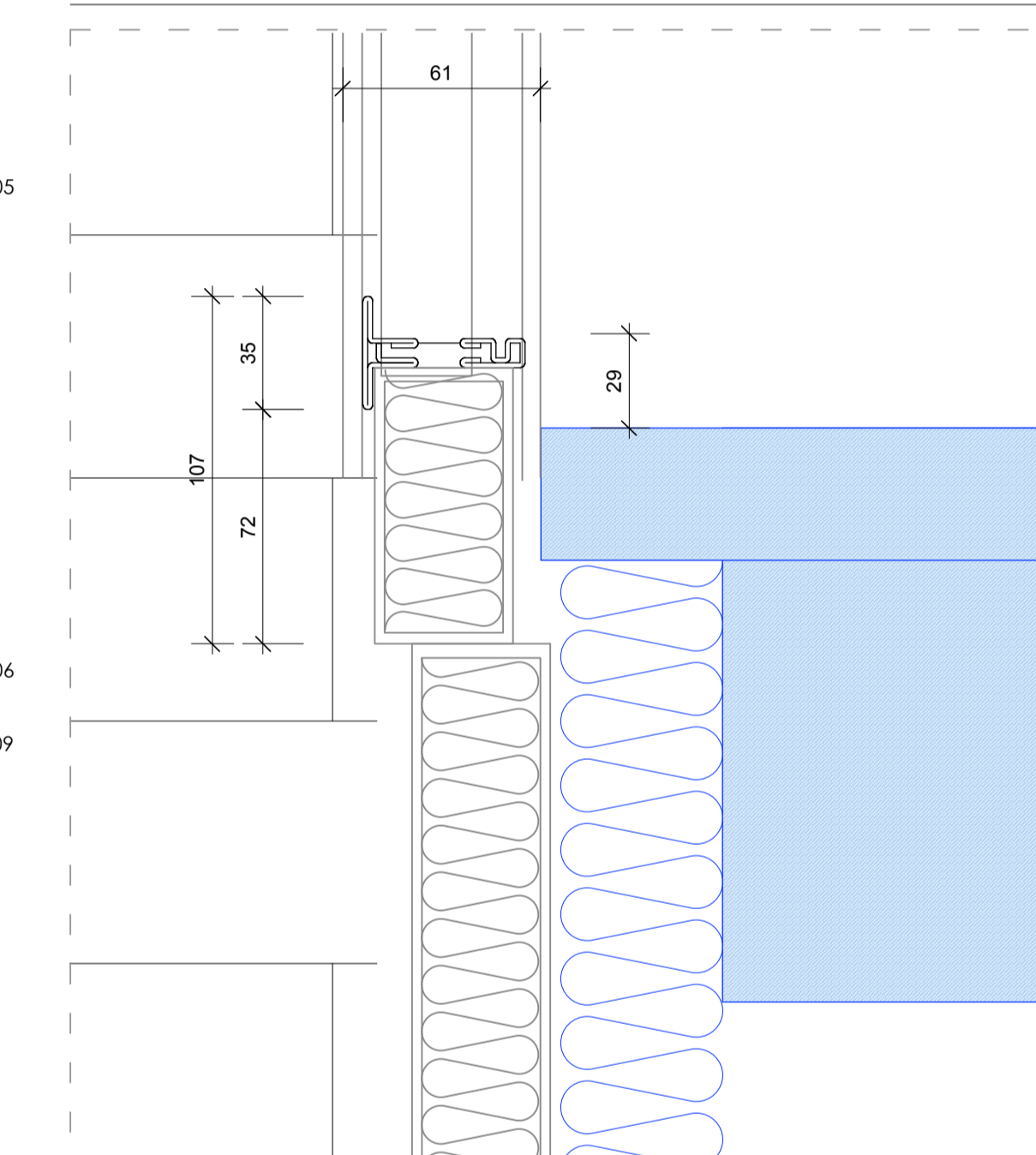
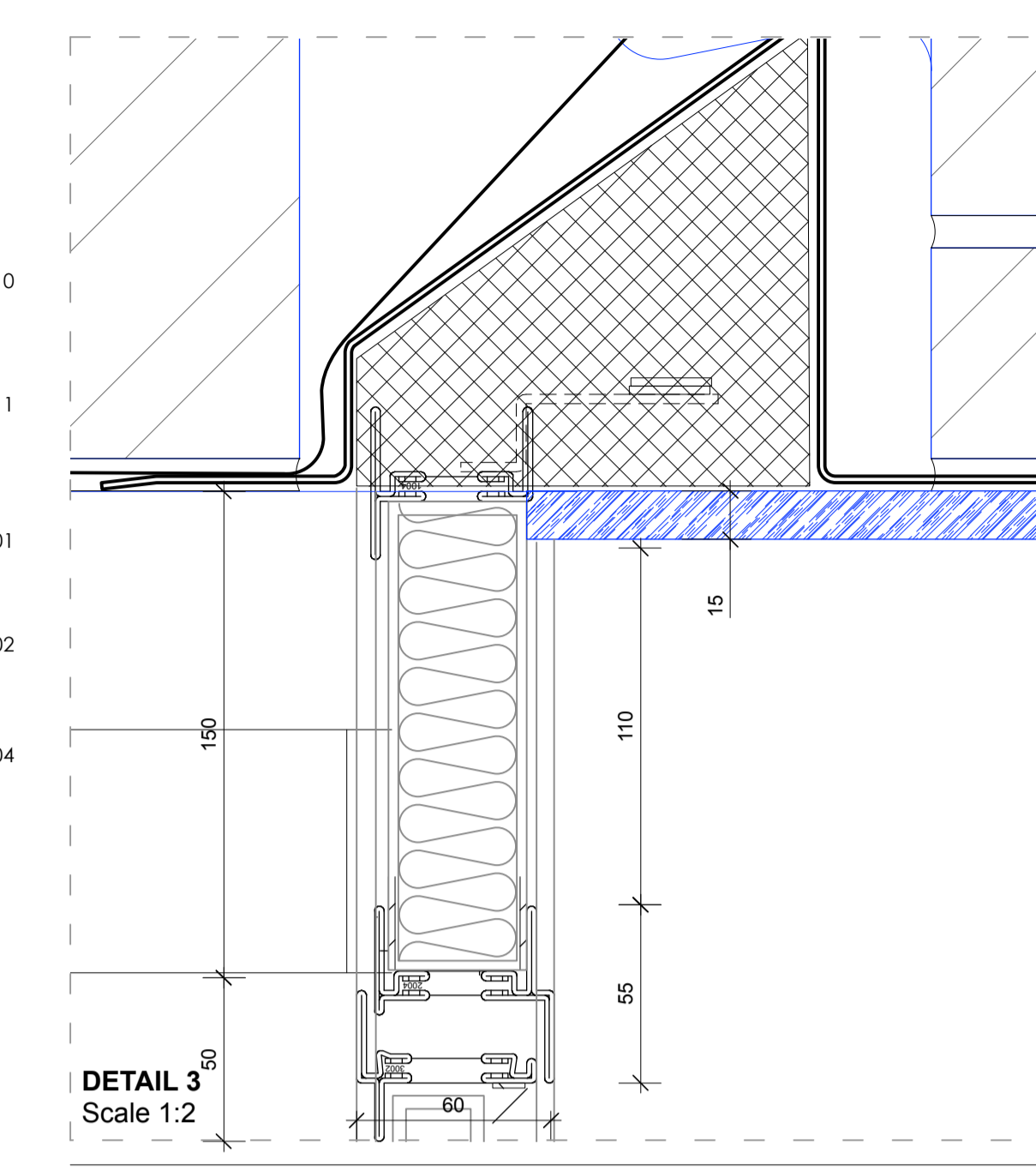
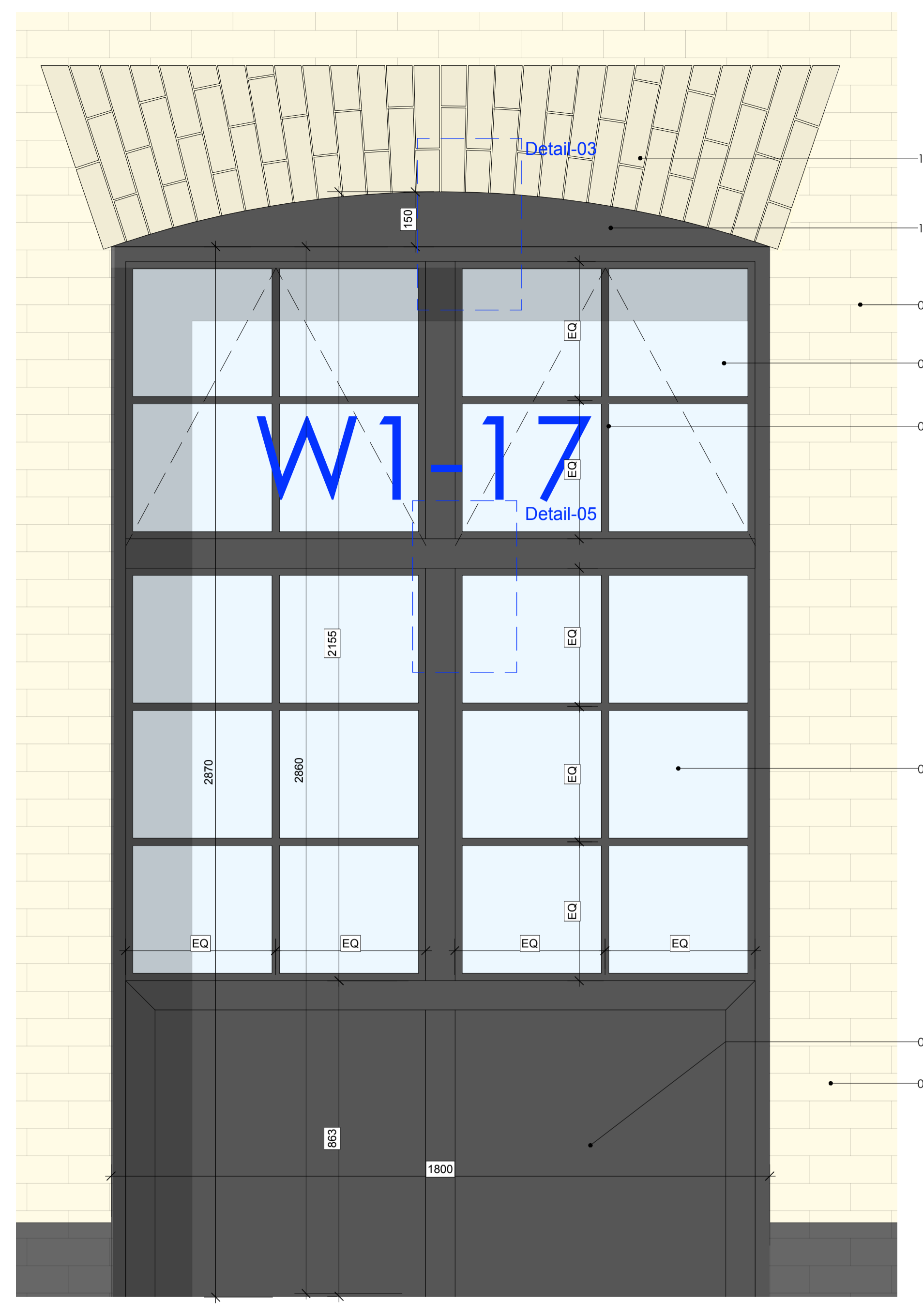
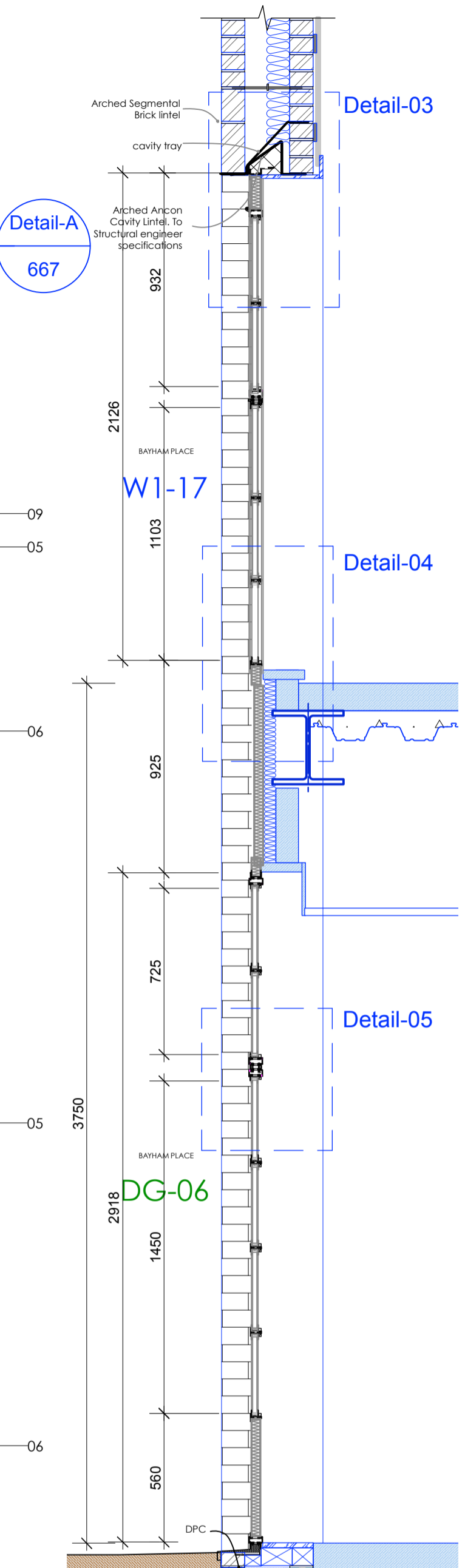
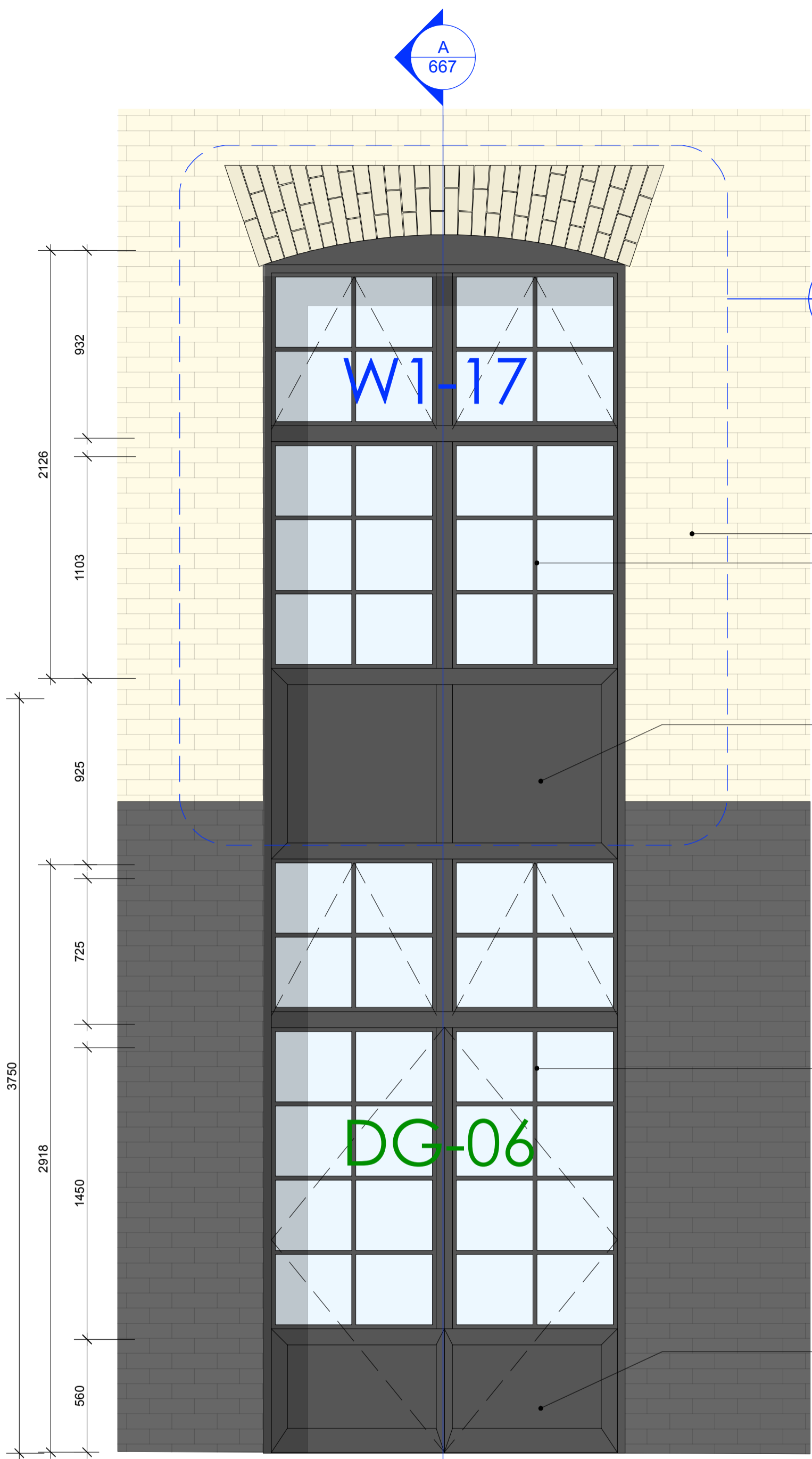


revision / date / amendments

A / 04/02/18 /	Steel panel changed for timber panelling
B / 08/02/18 /	Minor Alterations to steel sections

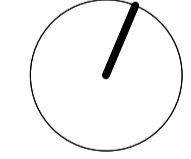


- LEGEND:**
- 01 - Thermally broken steel frame TBD
  - 02 - Top hung steel operable light TBD
  - 03 - Side hung operable Door TBD
  - 04 - Equally divided steel glazing bars TBD
  - 05 - Steel Sections by Westleigh TBD
  - 06 - Insulated power coated infill panel Ral to match cill and steel window frame
  - 07 - S/W packer
  - 08 - Powder coated aluminium external cill. Ral colour TBD
  - 09 - New brick masonry wall
  - 10 - Segmented brick arched lintel to SE Designx
  - 11 - Aluminium infill panel with Ral to match cill/ window colour
  - 12 - Kingspan Cavity closer

- WINDOWS**
- Window Numbers:  
Refer to Window Schedule  
Refer to Acoustic report for acoustic values and window specifications
- IRONMONGERY:**
- Steel Hinges TBD (Finish TBC)
  - Concealed Quadaxial Fixing Roses Lever Handle TBD (Finish TBC)
  - Roses (Finish TBC)

# TYPE-D

02.02.18



0 100 200 300 400 500 600 800mm

**STAGE 4**

Archer Humphries Architects

Basement  
Central House  
142 Central Street  
London, United Kingdom  
EC1V 8AR  
T: +44 (0) 20 7251 8555

project title		scale	date
KOKO + Hope & Anchor + Bayham Place Camden, London		1:20	26.01.18
drawing title	scale	date	
Typical Double-Height Steel Window Detail	1:20	26.01.18	
drawing number	revision	checked	DA
AHA/ KKC /DET/668	B	drawn	FR