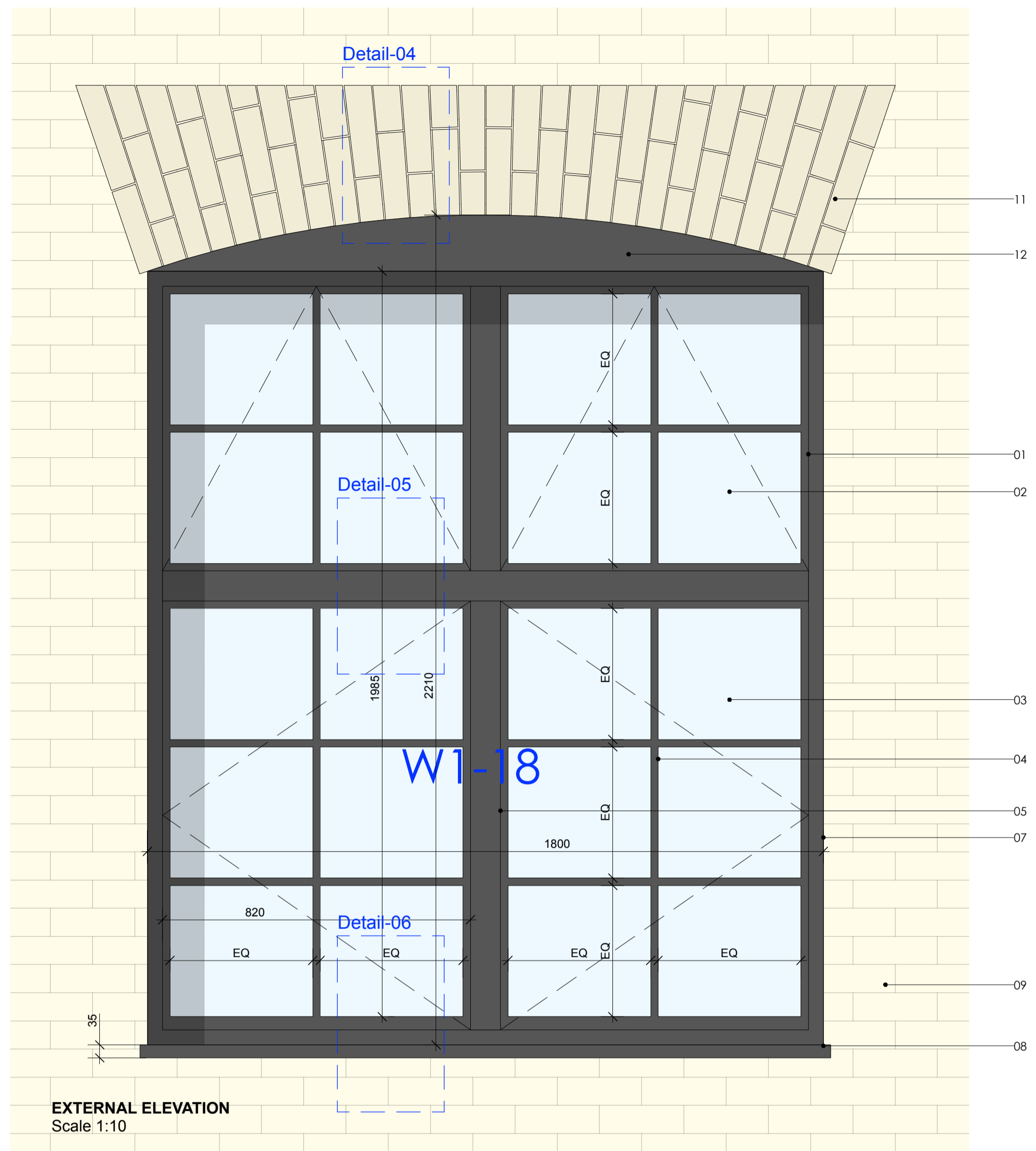
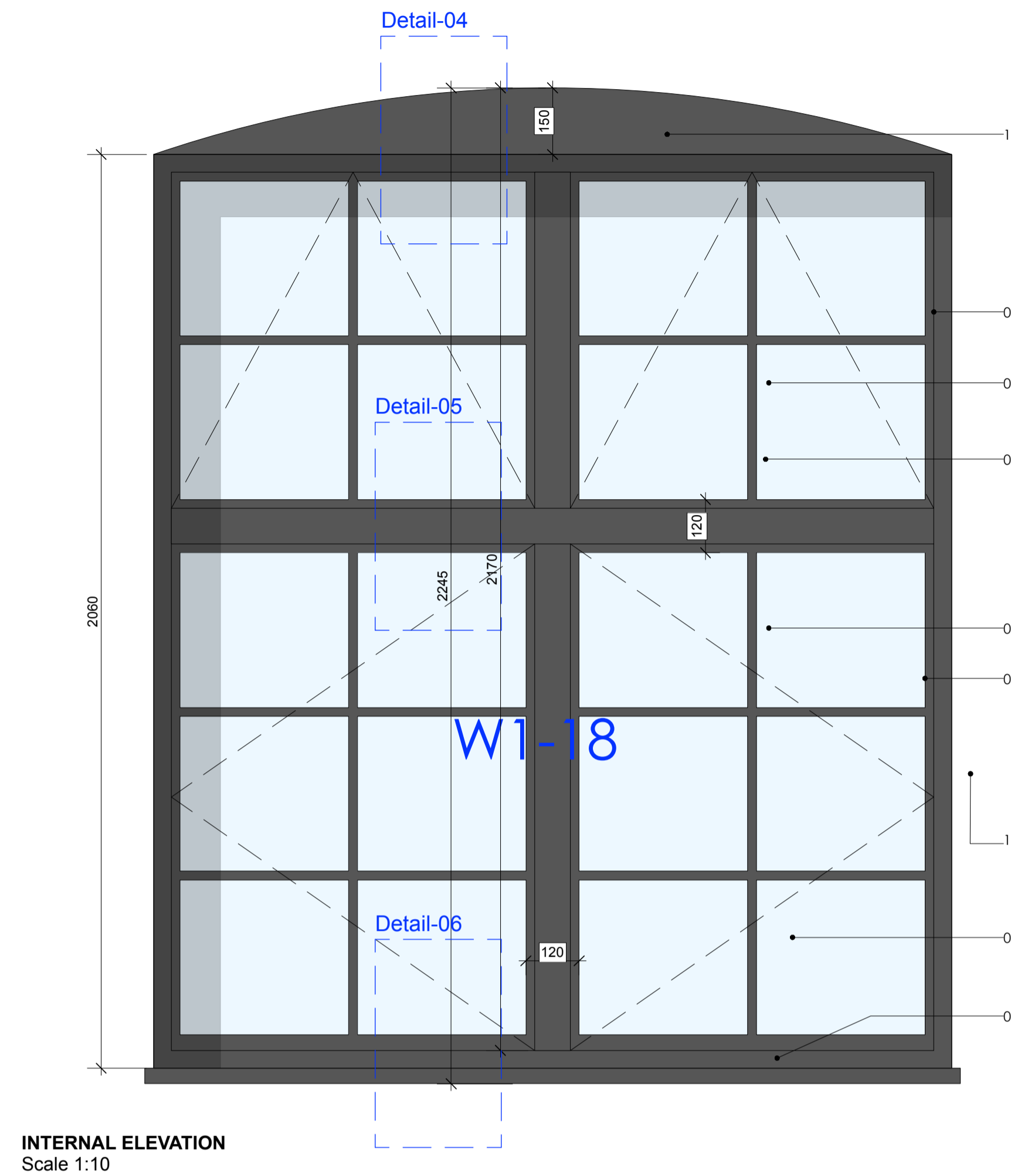


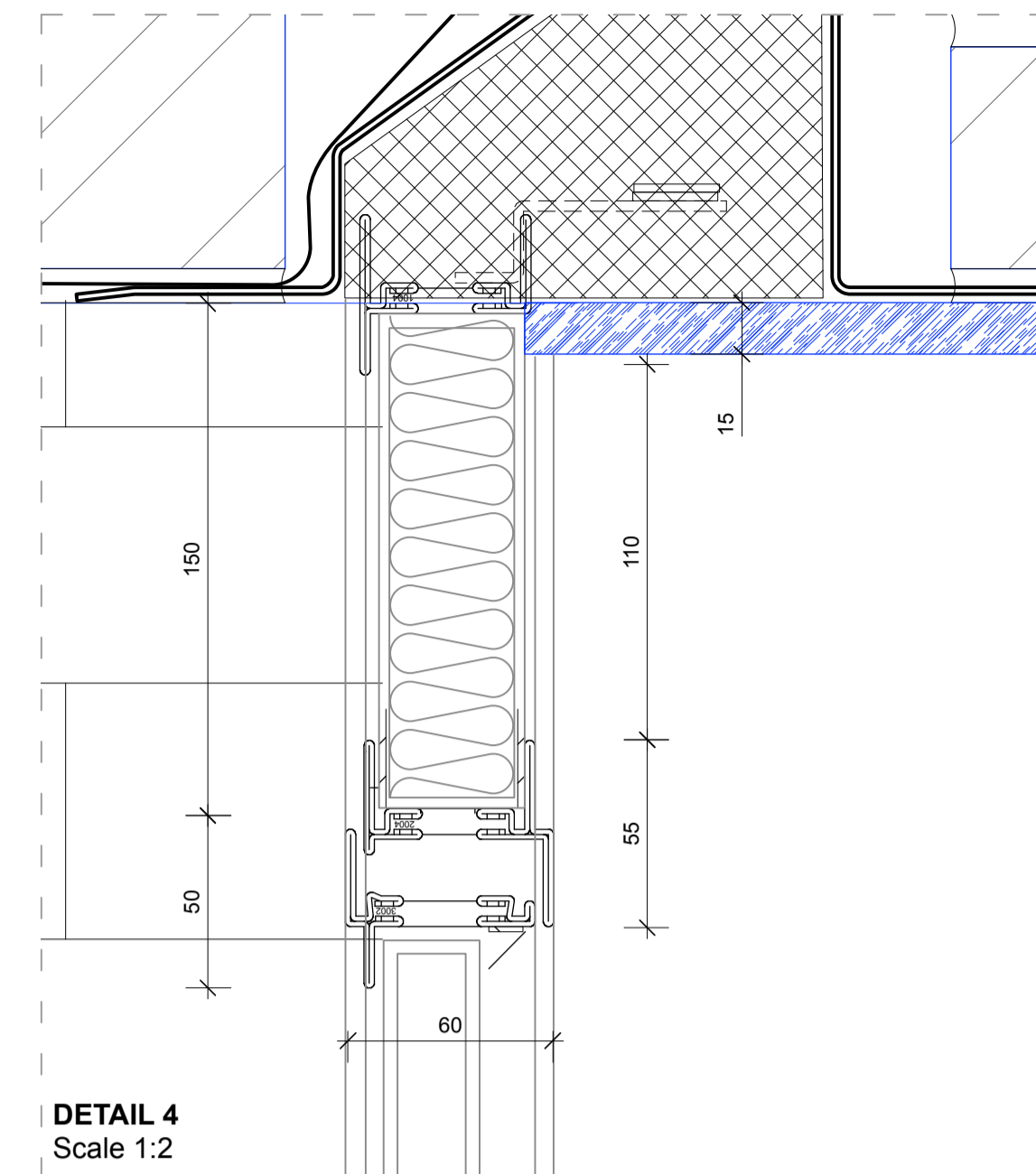
revision / date / amendments
- / - / - / -



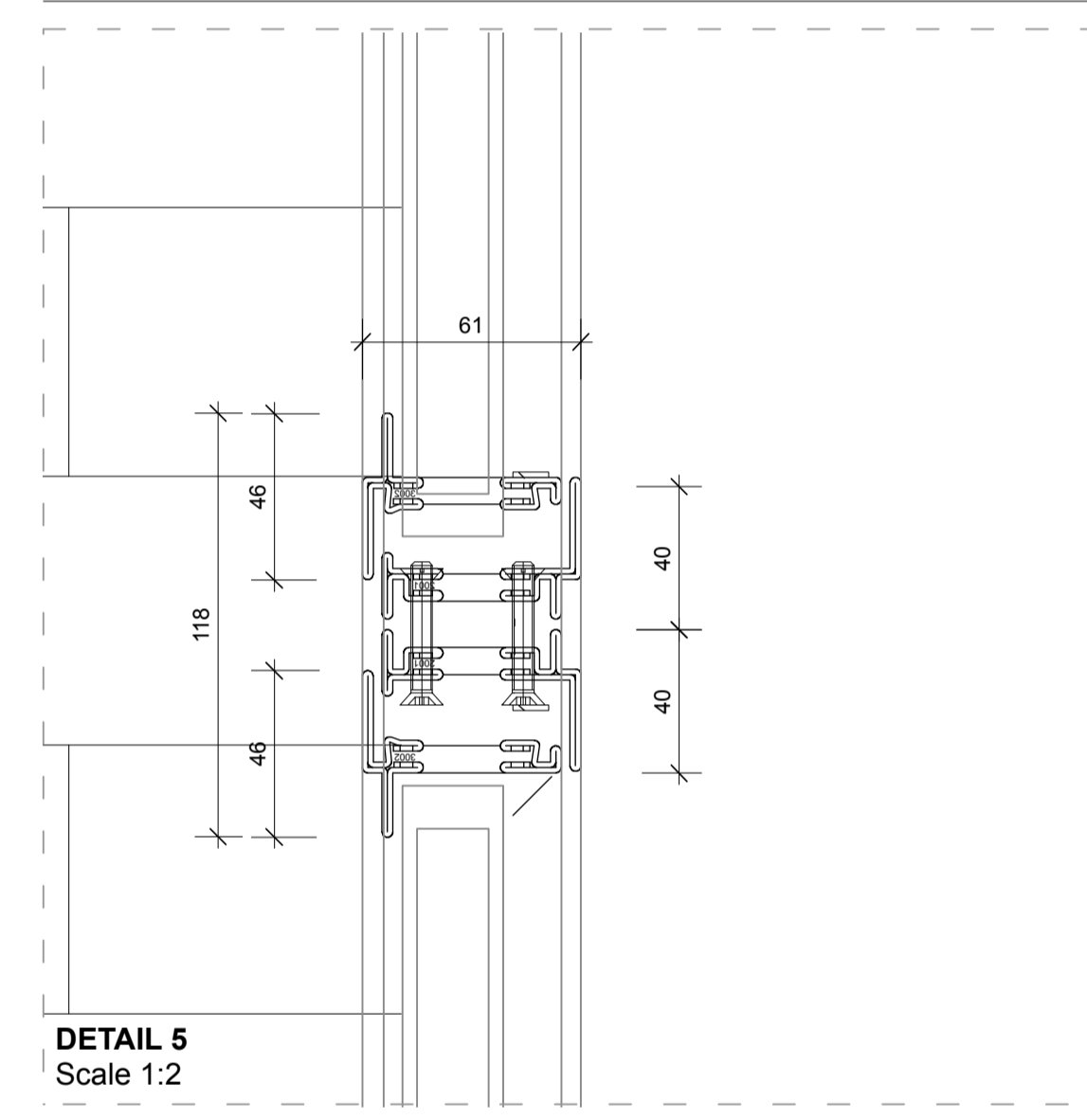
**EXTERNAL ELEVATION**  
Scale 1:10



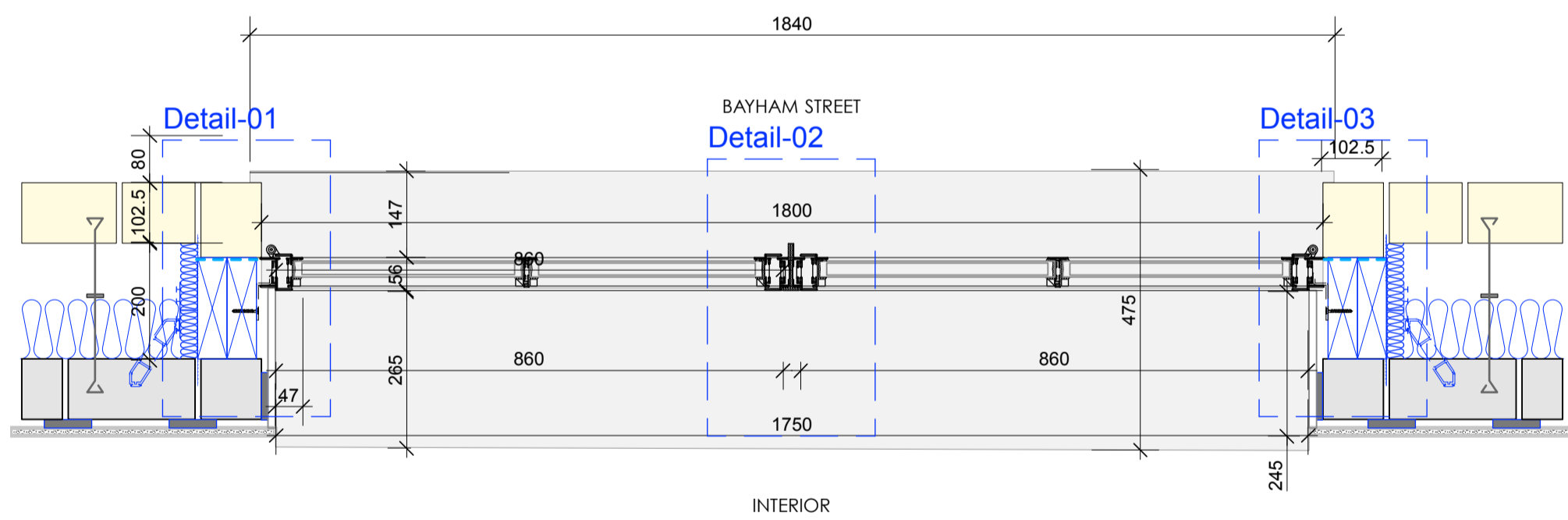
**INTERNAL ELEVATION**  
Scale 1:10



**DETAIL 4**  
Scale 1:2



**DETAIL 5**  
Scale 1:2



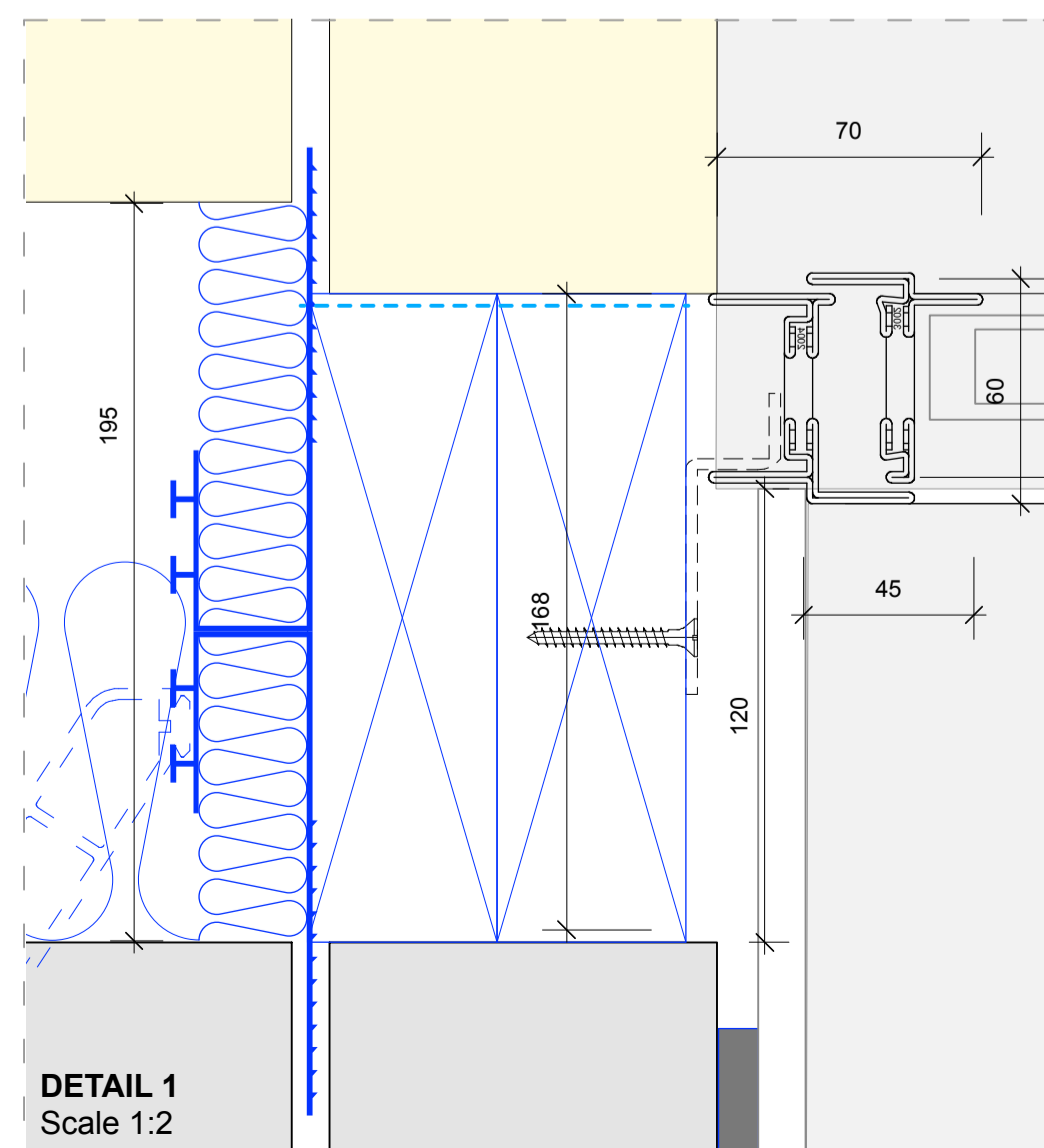
**PLAN**  
Scale 1:10

**WINDOWS**

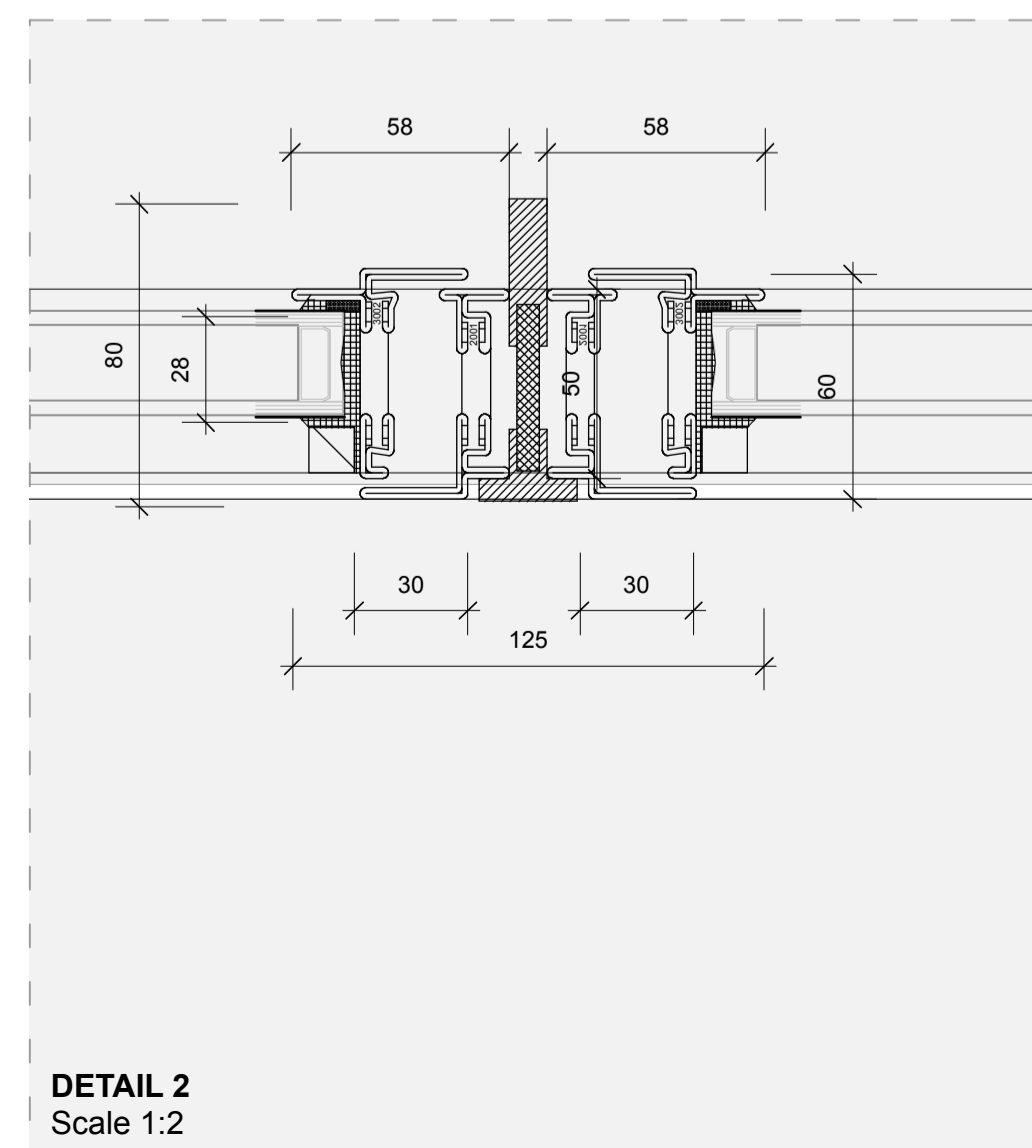
Window Numbers:  
Refer to Window Schedule

**IRONMONGERY:**

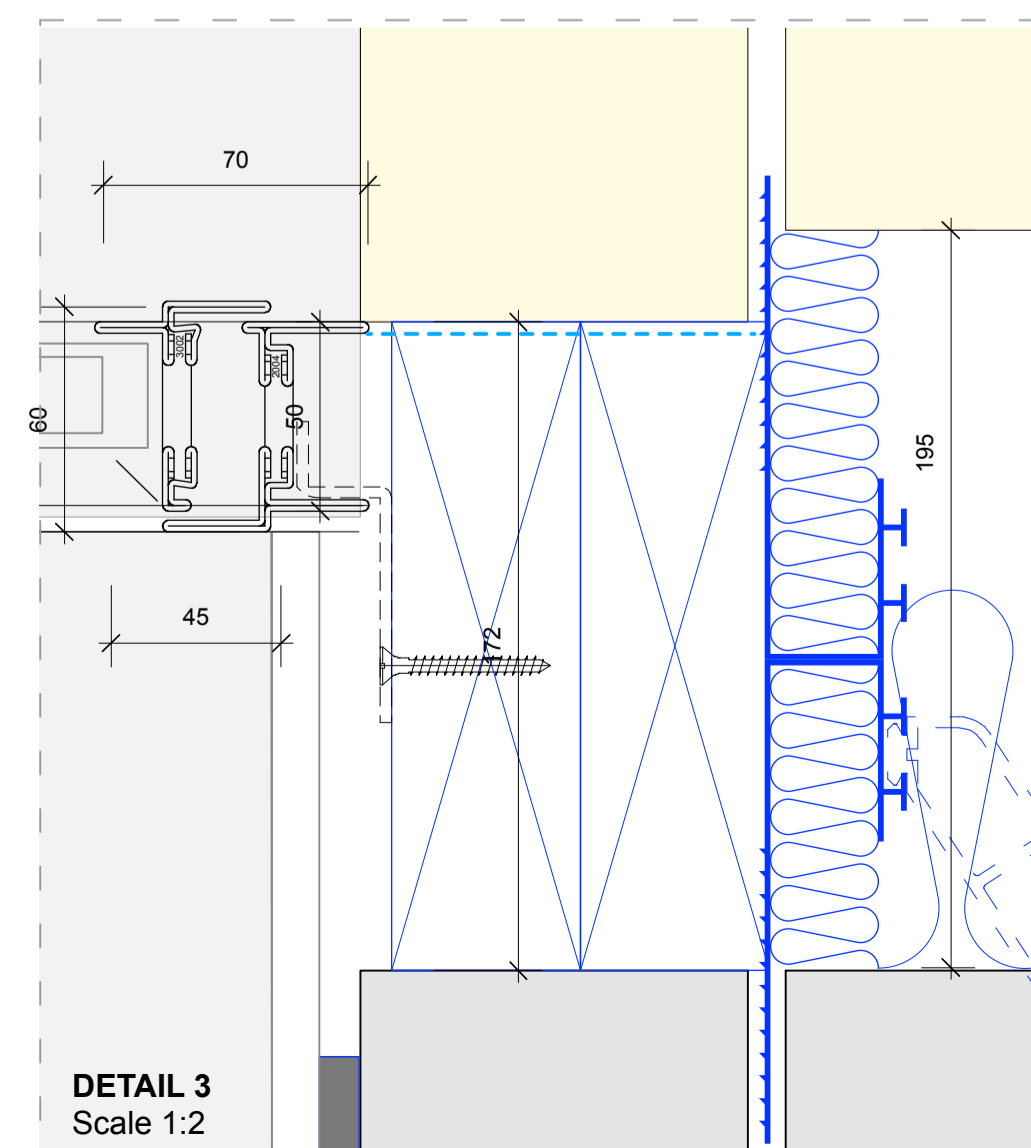
Steel Hinges TBD (Finish TBC)  
Concealed Quadaxial Fixing Roses Lever Handle TBD (Finish TBC)  
Roses (Finish TBC)



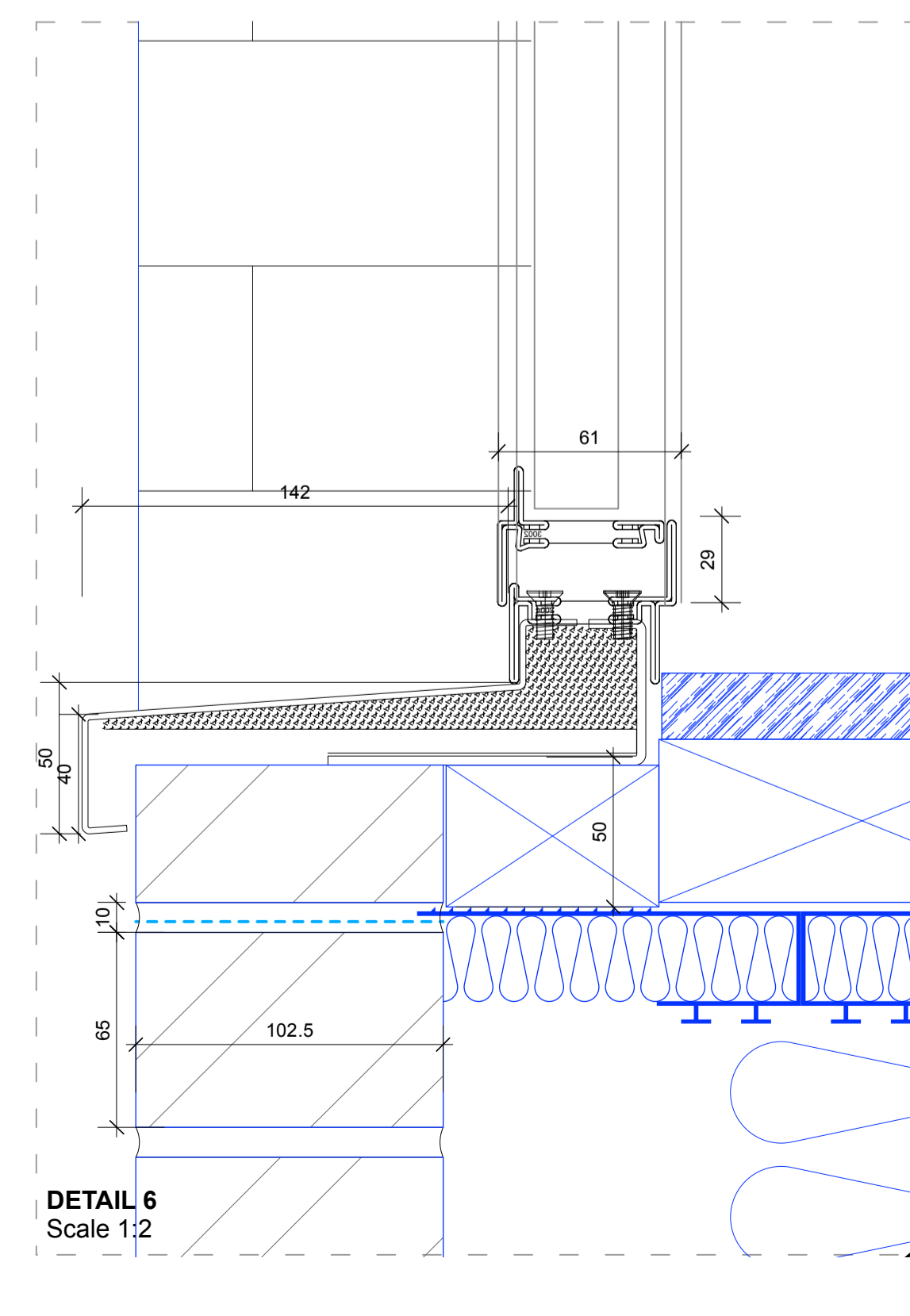
**DETAIL 1**  
Scale 1:2



**DETAIL 2**  
Scale 1:2



**DETAIL 3**  
Scale 1:2

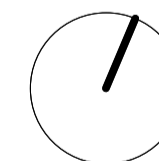


**DETAIL 6**  
Scale 1:2

- LEGEND:**
- 01 - Thermally broken steel frame TBD
  - 02 - Top hung steel operable light TBD
  - 03 - Side hung operable side light TBD
  - 04 - Equally divided steel glazing bars TBD
  - 05 - Steel Window Sections by Westleigh TBD
  - 06 - Internal timber cill TBD
  - 07 - S/W packer
  - 08 - Powder coated aluminium external cill. ral colour TBD
  - 09 - New brick masonry wall
  - 10 - Wall lining - Finishes TBD
  - 11 - Segmented brick arched lintel to SE Design
  - 12 - Aluminium infill panel with Ral to match cill/window colour
- Ref. to AHA-KKC-DET-500-WallTypes

# TYPE-C

02.02.18



0 100 200 300 400 500 800mm

**STAGE 4**

Archer Humphries Architects

Basement  
Central House  
142 Central Street  
London, United Kingdom  
EC1V 8AR  
T: +44 (0) 20 7251 8555

project title	
KOKO + Hope & Anchor + Bayham Place Camden, London	
drawing title	scale date
Typical Steel Window Detail	Series A1 26.01.18
drawing number	drawn checked
AVA / KKC / DET / 667	RZ/PC DA
	revision
	-