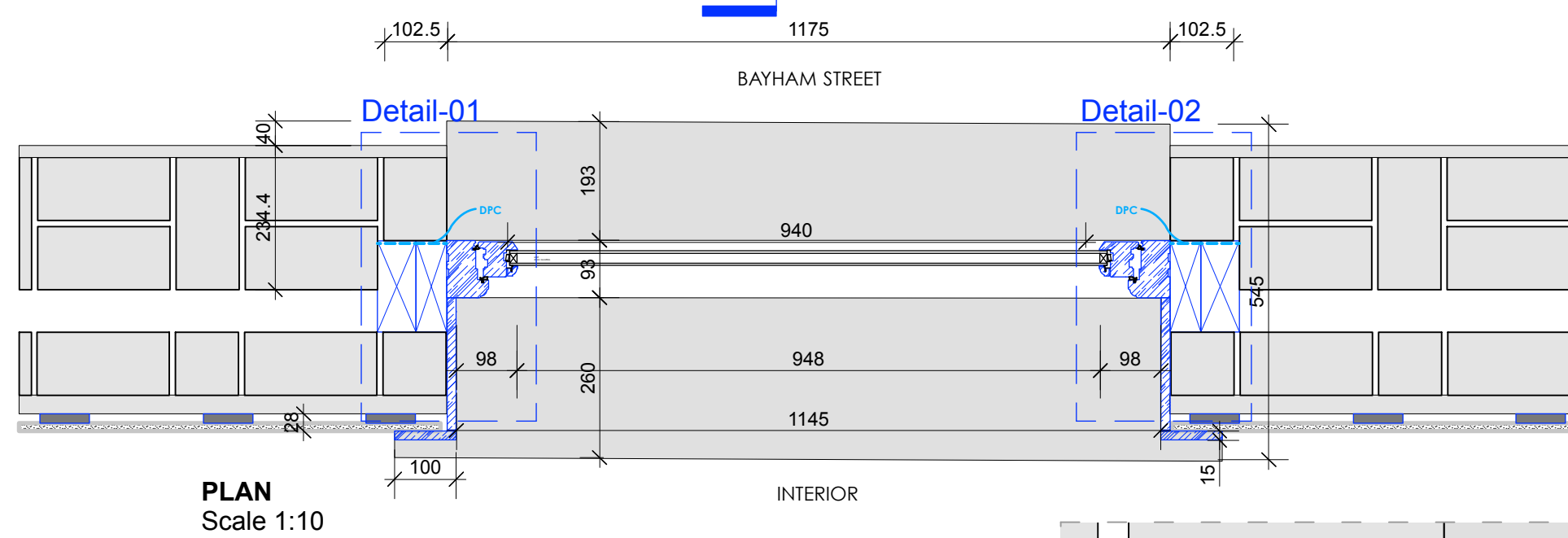
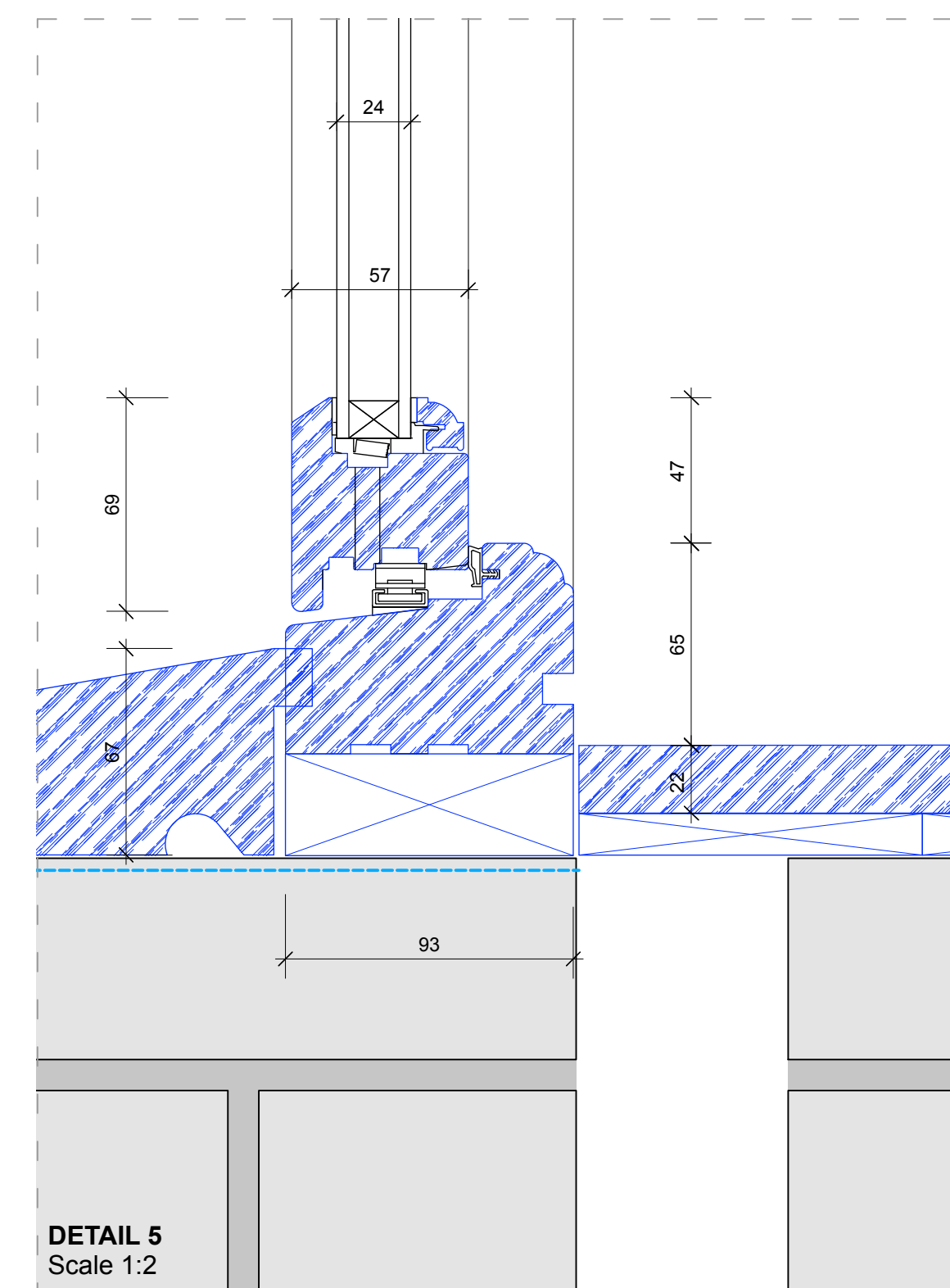
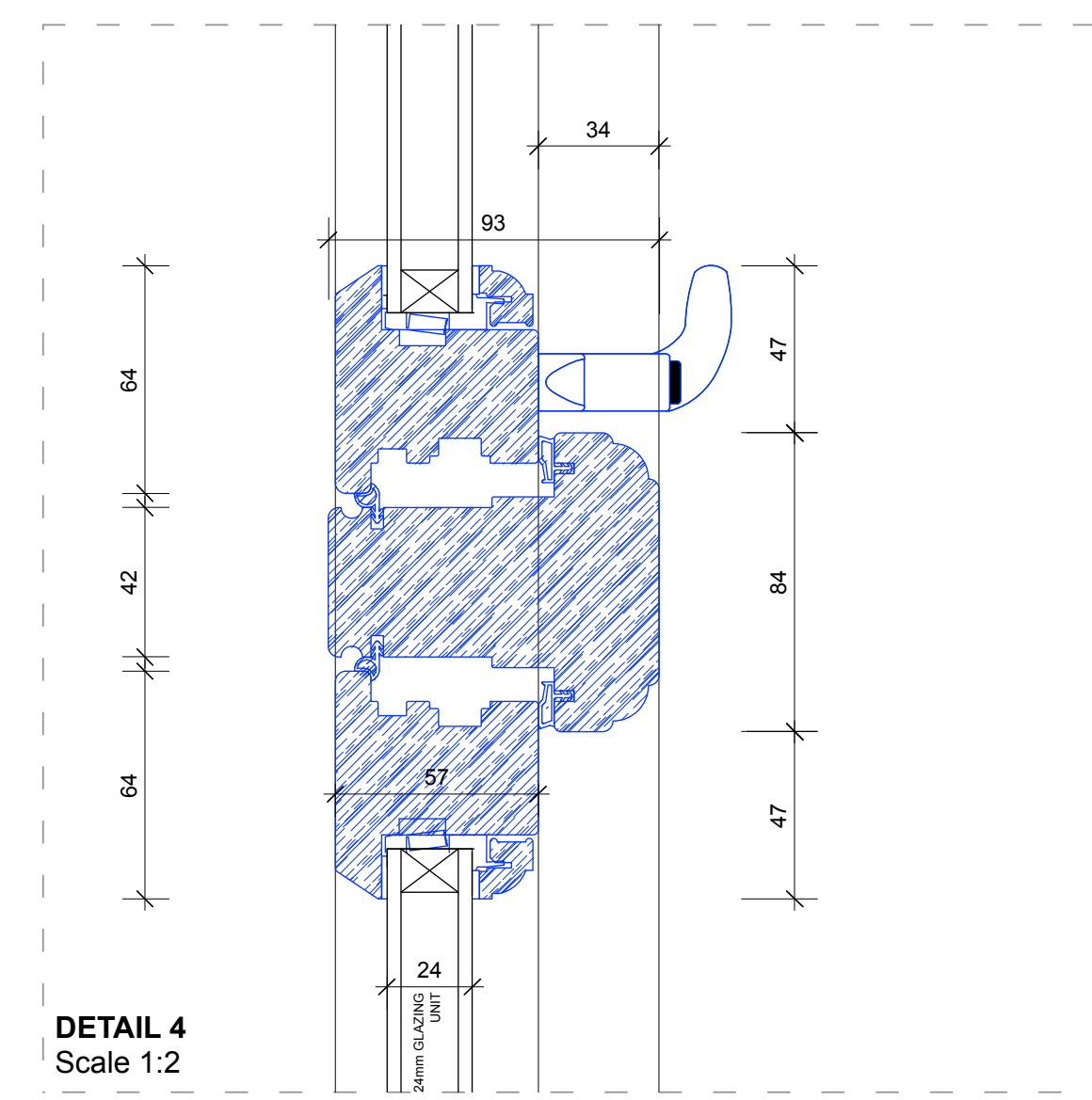
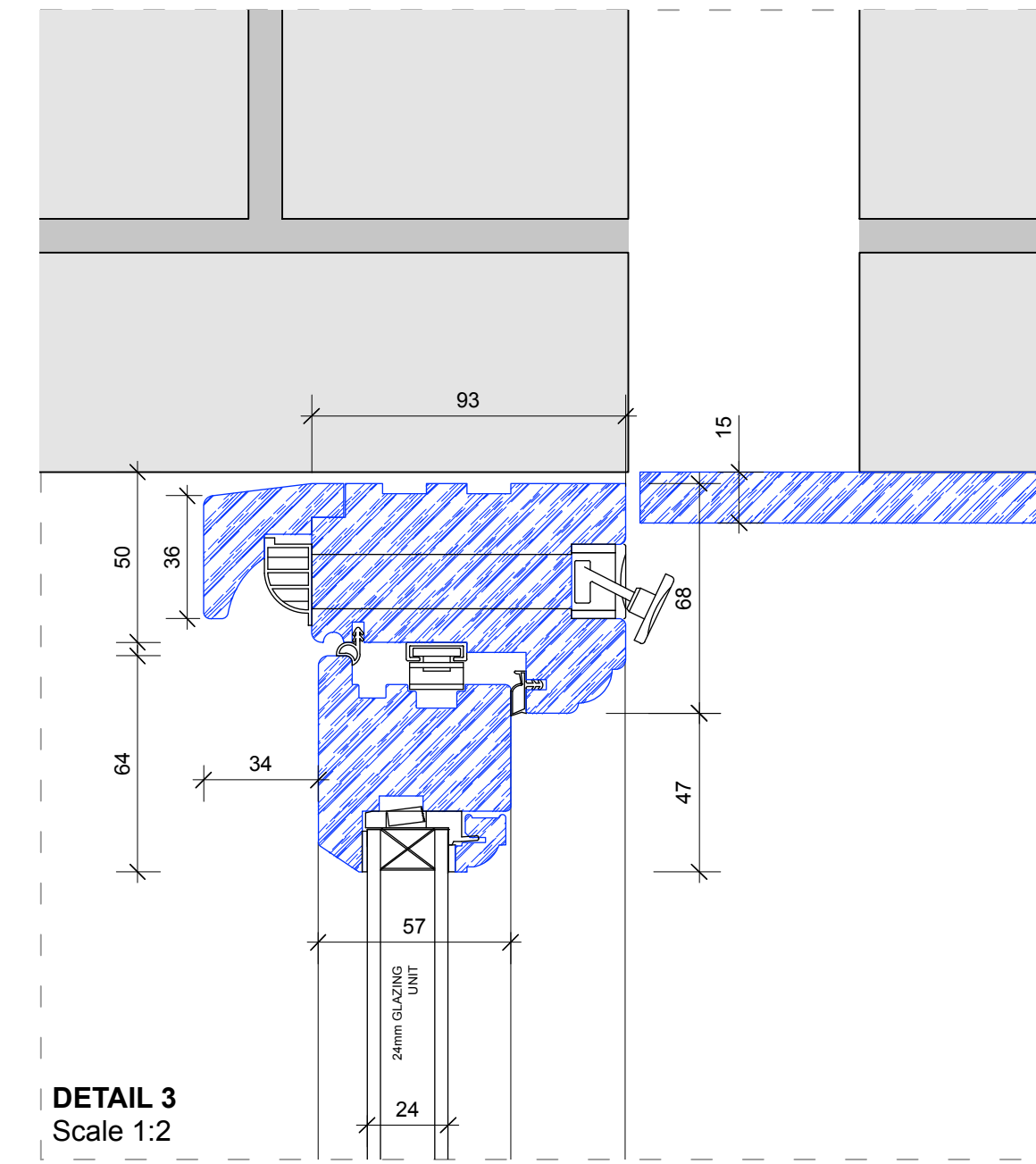
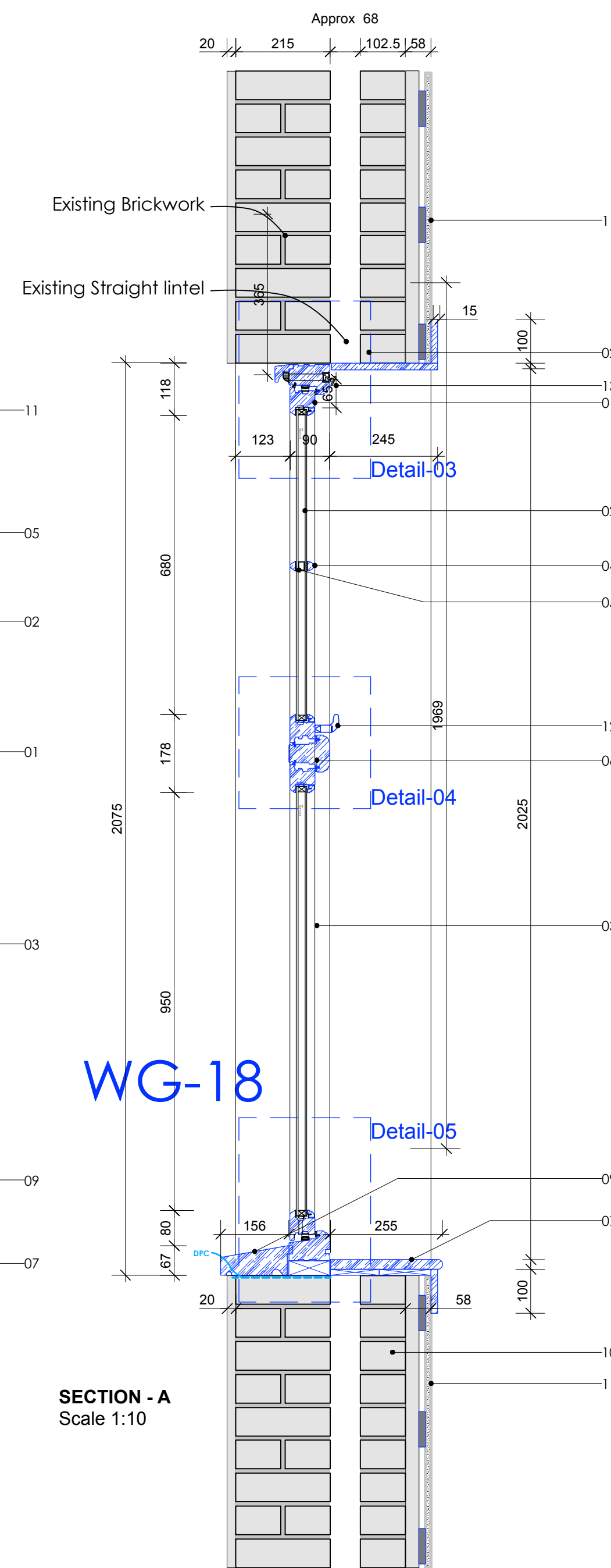
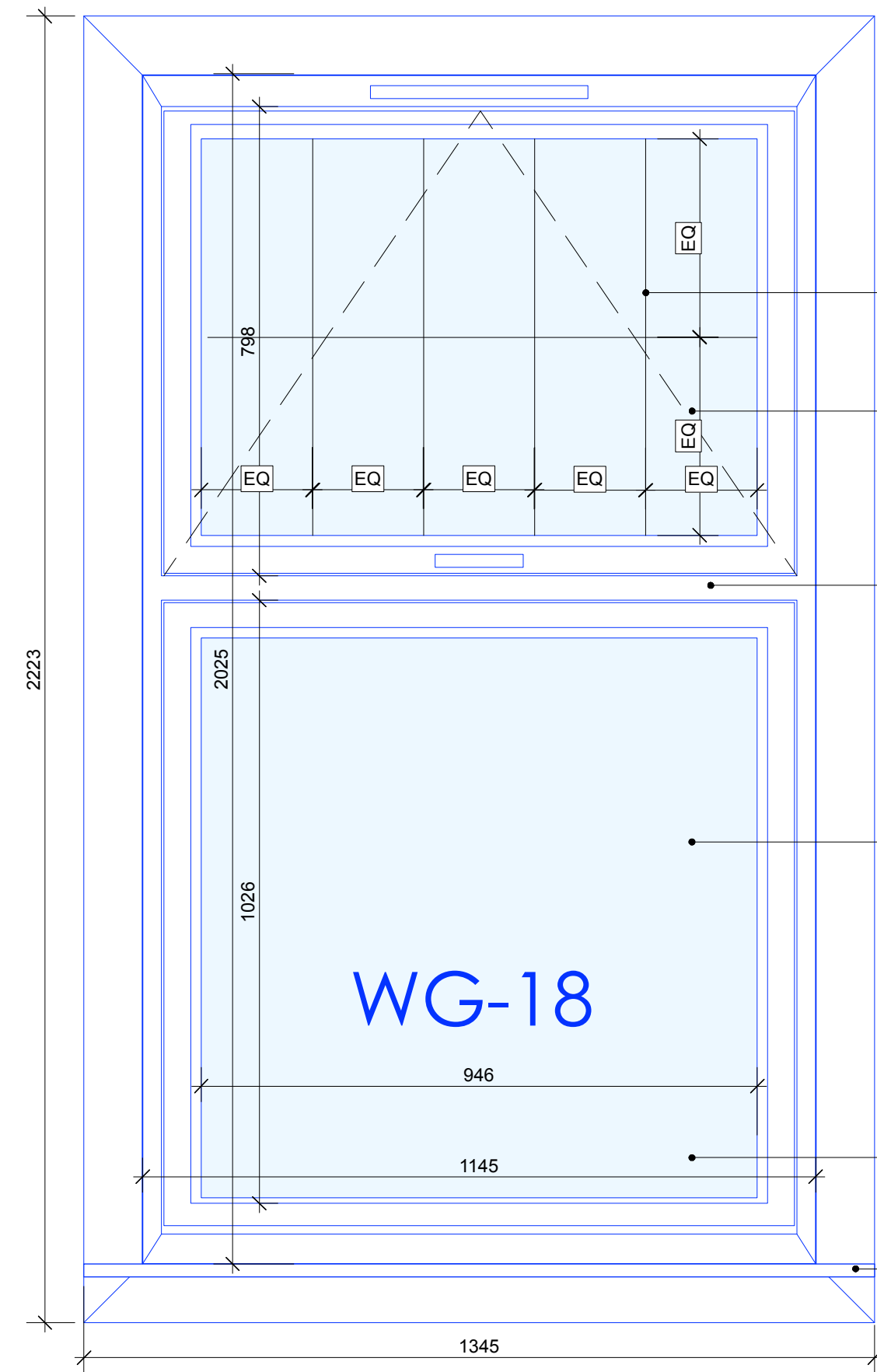
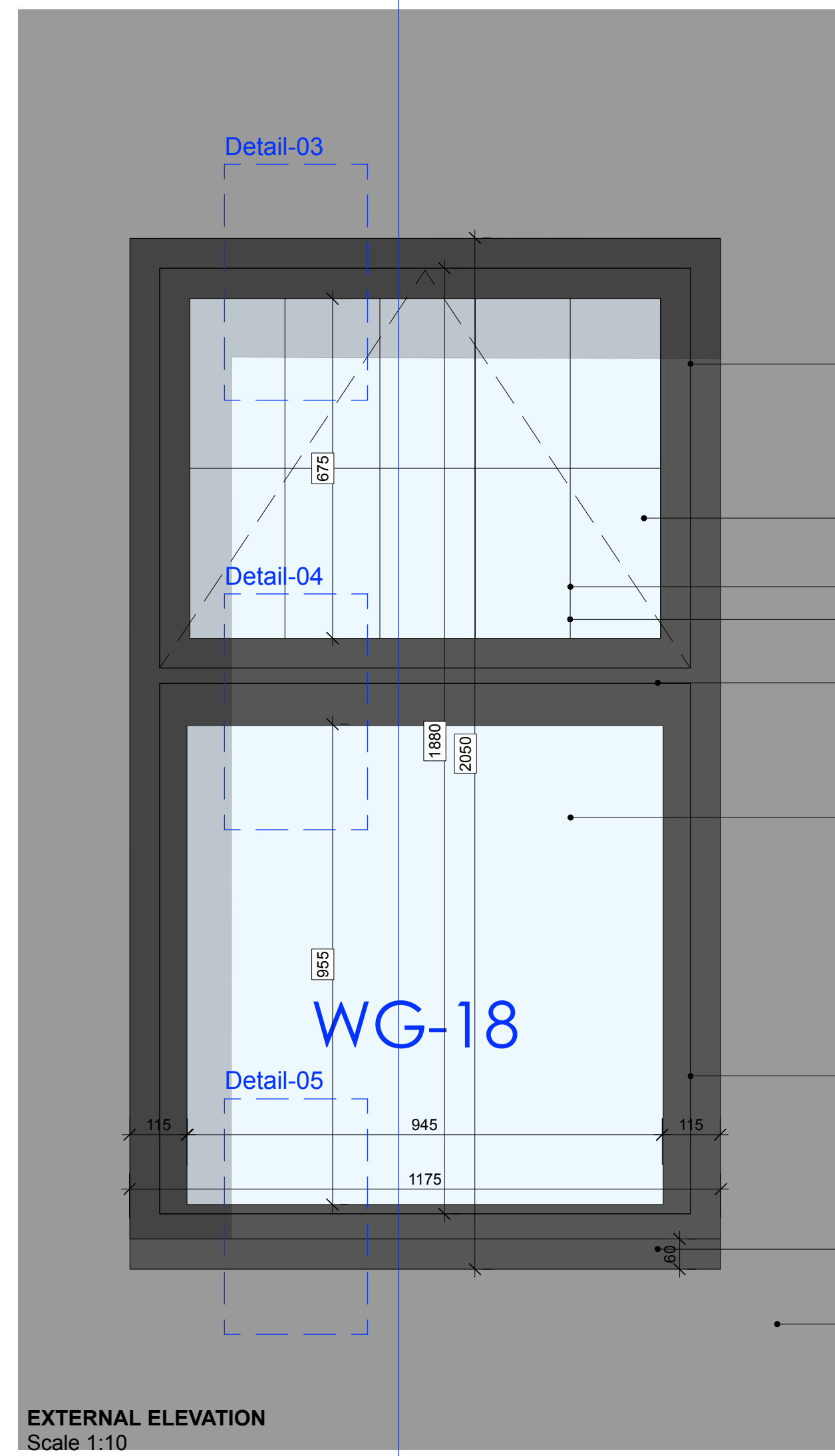
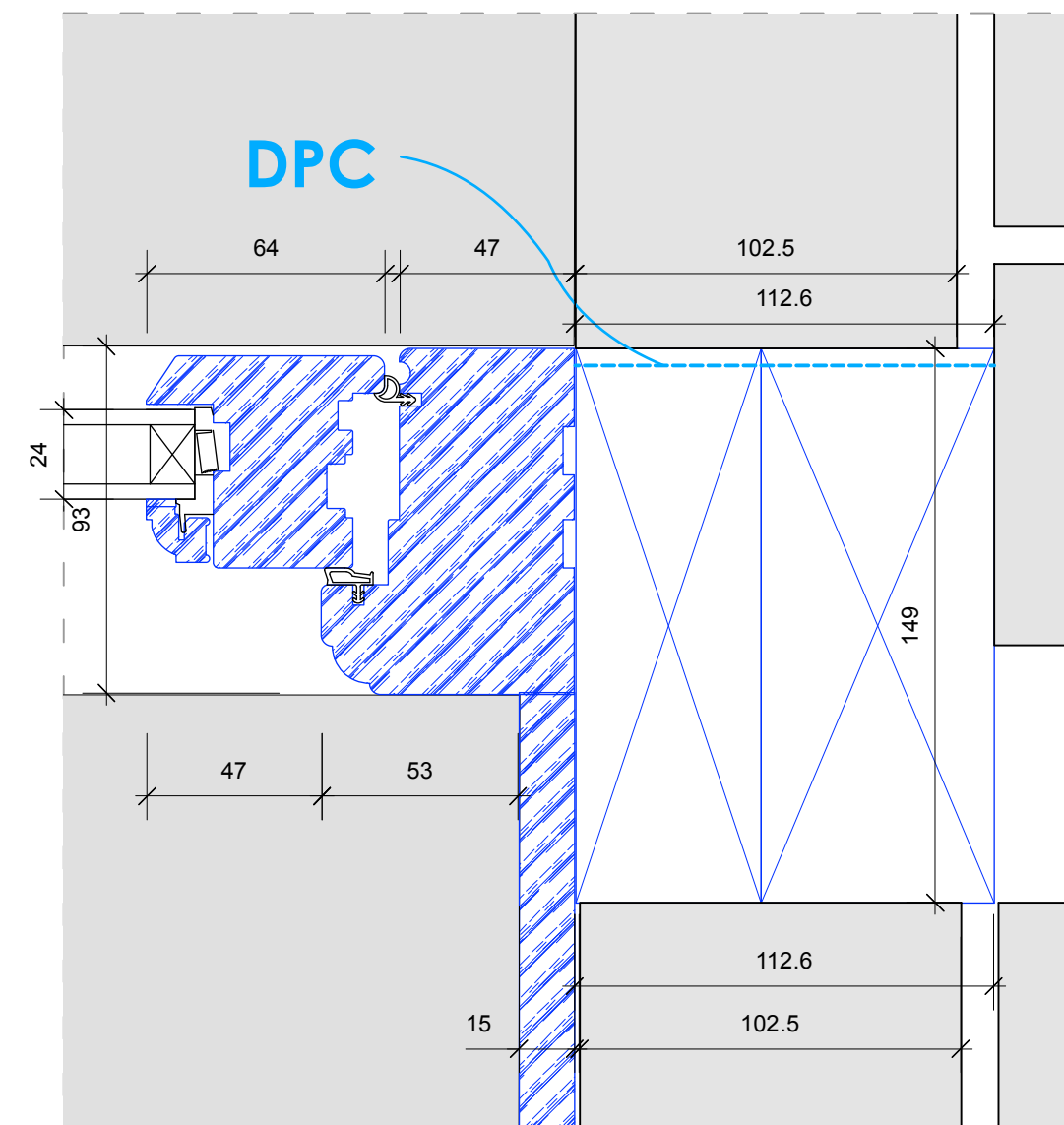
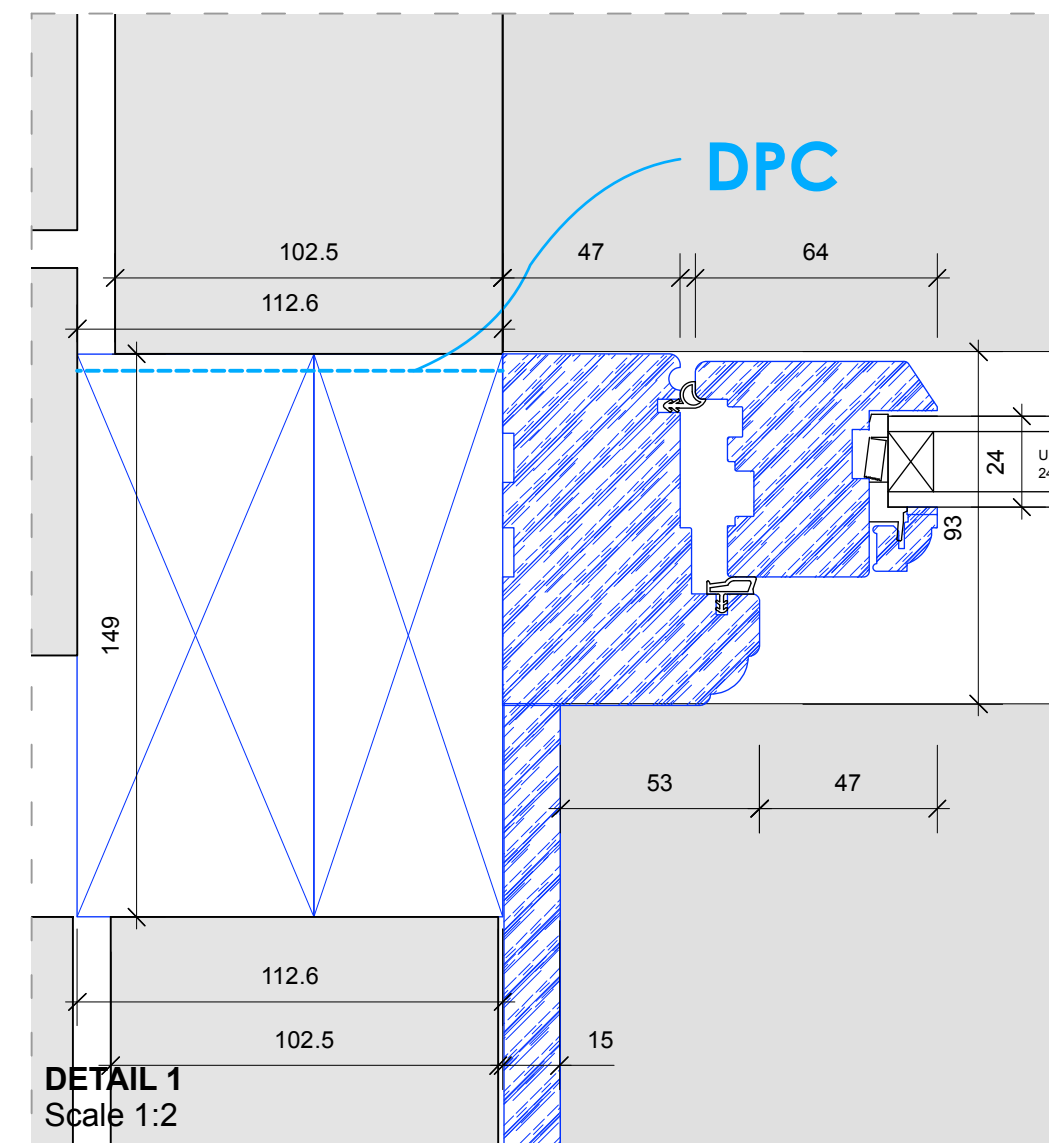


A
668



WINDOWS
Window Numbers:
Refer to Window Schedule

IRONMONGERY:
Steel Hinges TBD (Finish TBC)
Concealed Quadaxial Fixing Roses Lever Handle TBD (Finish TBC)
Roses (Finish TBC)



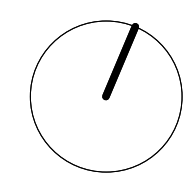
- LEGEND:**
- 01 - Timber casement frame to match Hope and Anchor Timber windows TBD
 - 02 - Top hung operable light TBD
 - 03 - Fixed lower light TBD
 - 04 - Equally divided glazing bars TBD
 - 05 - Traditional Ovolo Glazing bar TBD
 - 06 - Timber windows by Mumford and Wood TBD
 - 07 - Internal timber cill TBD
 - 08 - S/W packer
 - 09 - Timber external cill, finish TBD
 - 10 - Existing Masonary wall
 - 11 - Wall lining - Finishes TBD
 - 12 - Timber window Jamb
 - 13 - Trickle vent
- Ref. to AHA-KKC-DET-500-WallTypes

Copyright: All rights reserved. This drawing must not be reproduced without permission.
Only the original drawing should be relied upon. Contractors, subcontractors and suppliers must verify all dimensions on site before commencing any work or making any shop drawings.
All shop drawings to be submitted to the architect for comment prior to fabrication.
This drawing is to be read in conjunction with the Architect's specification, bills of quantities / schedules, structural, mechanical & electrical drawings and all discrepancies are to be reported to the architect.
Do not scale from this drawing. Dimensions are in millimetres unless otherwise stated.

revision / date / amendments
- / - / - / -

TYPE-B

02.02.18



0 100 200 300 400 500 600 800mm

STAGE 4

Archer Humphryes Architects

Basement
Central House
142 Central Street
London, United Kingdom
EC1V 8AR
T: +44 (0) 20 7251 8555

project title		KOKO + Hope & Anchor + Bayham Place Camden, London	
drawing title	scale	date	
Type B	1:2	26.01.18	
drawing number	revision	checked	DA
AHA / KKC / DET / 666	-	FR/PC	