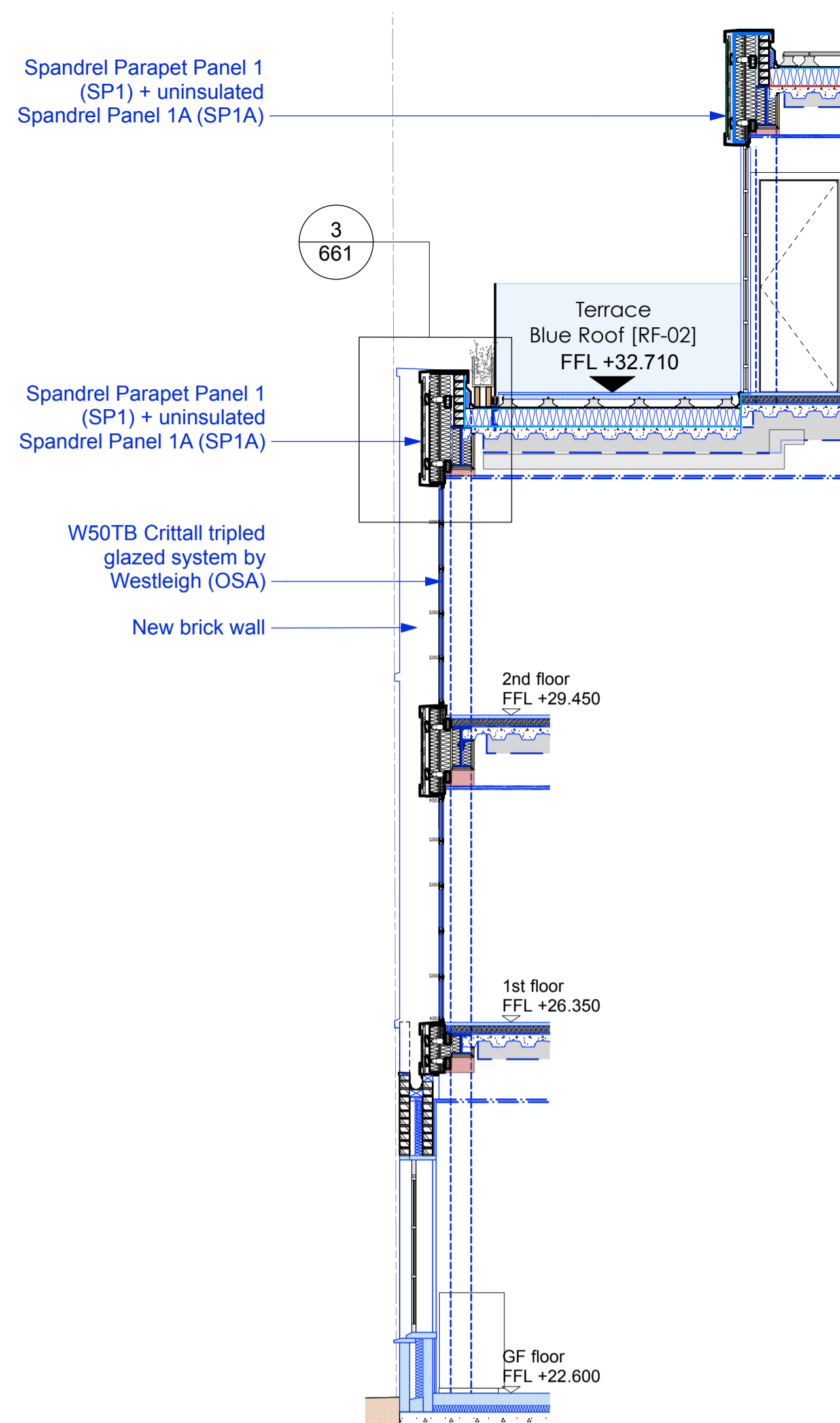




1 Bayham Place Facade
Scale: 1:50



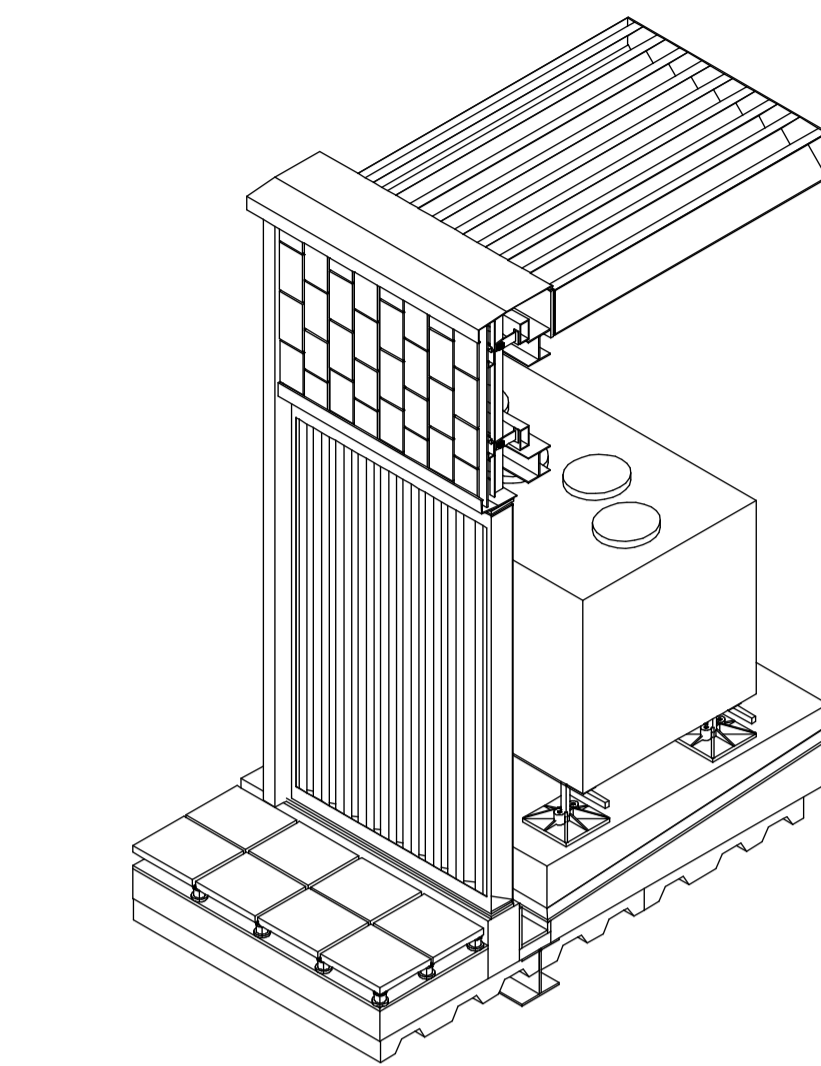
2 Sectional Detail of Facade Spandrel Panels
Scale: 1:50

Legend - Spandrel Parapet Panel 1 - SP1

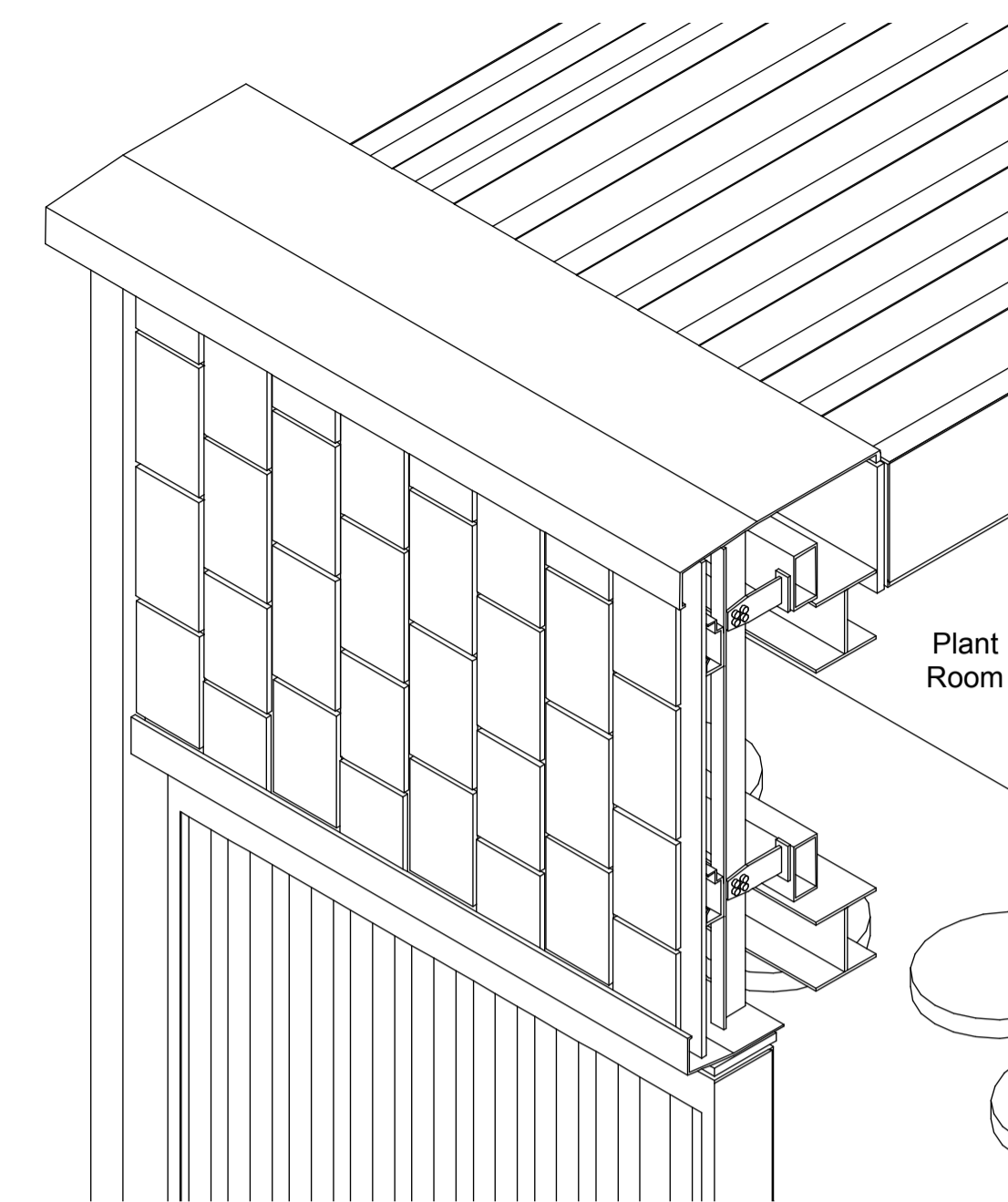
NOTE: SP1A is shown as an uninsulated Spandrel parapet panel to the plant enclosure - this is subject to approval from Approved Inspector

1. W50TB Crittall triple glazing system by Westleigh (OSA)
2. Head track of W50TB Crittall system by Westleigh (OSA) fixed to spandrel panel
3. Steel profile connecting head track to secondary beam
4. External head cill moulded to form border of panel. RAL tbc. Allow for weep holes.
5. VJ.67 Pyrolave glazed brick slip by Pyrolave Architecture (OSA)
6. Tile adhesive as per manufacturers's installation guidelines.
7. FastClad cladding
8. Interlocking bracket (female) fixed to sheeting rail
9. Sheeting rail at intervals fixed to secondary beams
10. Secondary beam at top and bottom of panel fixed to structural column
11. New brick wall set back
12. External head cill moulded to form top border of panel and coping over parapet
13. Structural column taped at top to SE details.
14. Packer as required
15. Inner brick leaf
16. Roof linings to be lapped up to brick work. Refer to roof build up RF-02
17. Refer to roof build up RF-02
18. Intumescent sealant (AstroFlame OSA) as required sealing Fireline casement of steel beam
19. 2 x 15mm Fireline casing to steel beam fixed with staggered joints.
20. Structural beam to SE details. Beam to be same width as column.
21. 100mm mineral wool board (non-combustible)
22. Perimeter fire break - Refer to NBS spec.
23. 12mm cement bonded particle board
24. 90mm Kooltherm K112 insulation by Kingspan (non-combustible) (OSA) - To achieve u-value 0.20 w/m2k or less. To be agreed with Approved Inspector.

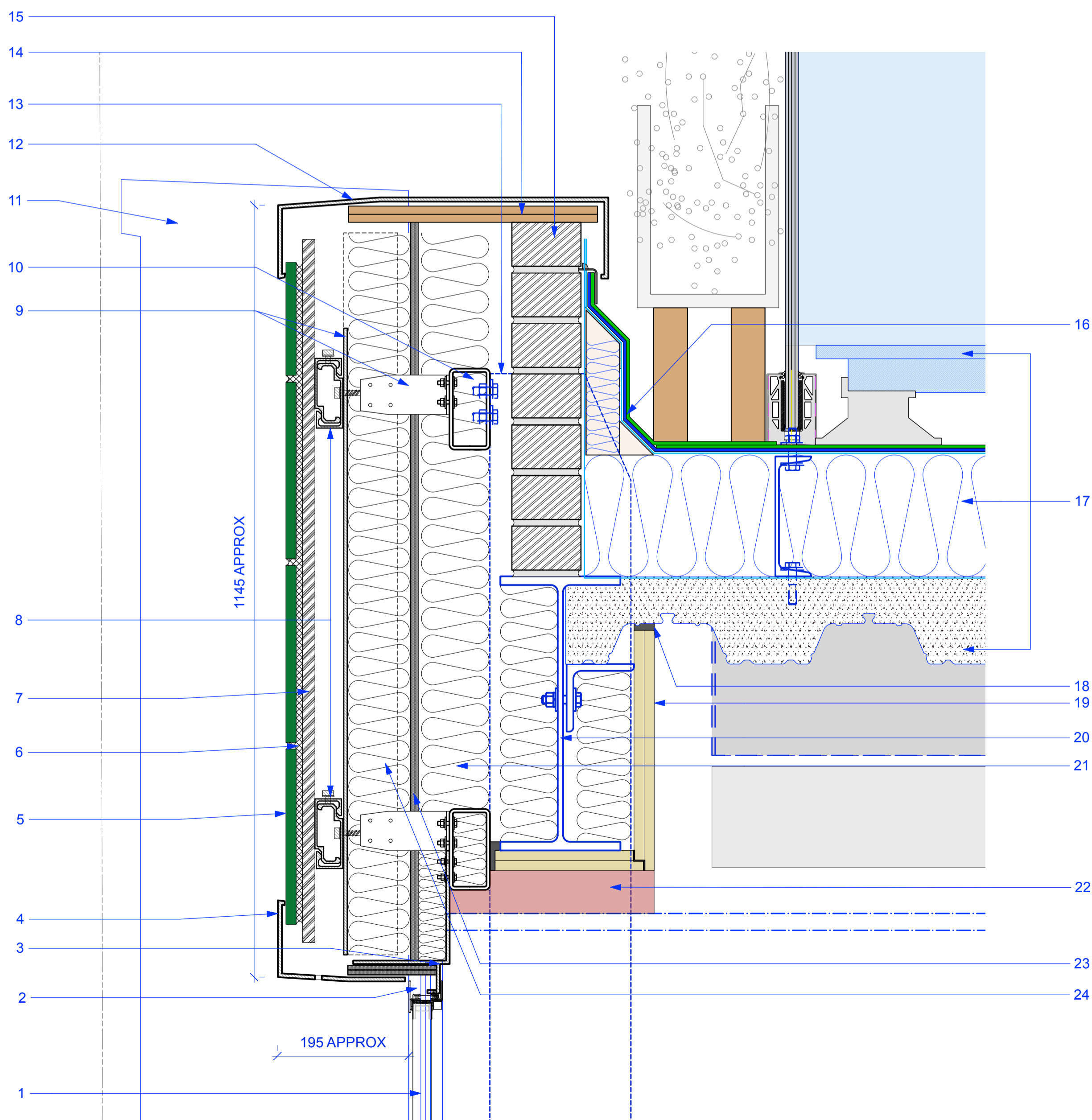
NB: Allow for resilient gaskets for all fixings



4 3D sketch of uninsulated Plant Room Spandrel - NTS



5 3D sketch of Uninsulated Spandrel Panel SP1A - NTS
Scale: 1:25



3 Sectional Detail of Spandrel Panel SP1 with parapet
Scale: 1:5

Copyright: All rights reserved. This drawing must not be reproduced without permission.

Only the original drawing should be relied upon. Contractors, subcontractors and suppliers must verify all dimensions on site before commencing any work or making any shop drawings.

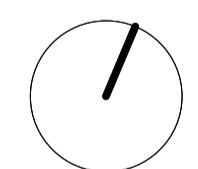
All shop drawings to be submitted to the architect for comment prior to fabrication.

This drawing is to be read in conjunction with the Architect's specification, bills of quantities / schedules, structural, mechanical & electrical drawings and all discrepancies are to be reported to the architect.

Do not scale from this drawing. Dimensions are in millimetres unless otherwise stated.

revision / date / amendments

26.01.18



0 50 100 150 200 250 400mm

STAGE 4

Archer Humphryes Architects

Basement
Central House
142 Central Street
London, United Kingdom
EC1V 8AR
T: +44 (0) 20 7251 8555

project title
KOKO + Hope & Anchor + Bayham Place
Camden, London

drawing title	scale	date
Proposed Facade Spandrel + Glazing Details 2	1:5 @A1	30.11.17
drawing number	checked	PC/FJS
revision	DA	-
drawing number	revision	-
AHA / KKC / DET / 661		

Note:
1. Facade Spandrel design is indicative and subject to fabrication and shop drawings
2. Drawing to be read in conjunction with other consultant details and AHA detail drawing 660 series
3. Refer to Acoustic and Sustainability report for minimum respective acoustic and energy performance requirements.
4. Refer to manufacturer's installation guidelines / information for all products prior to installation