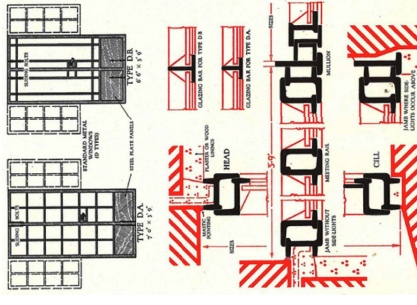
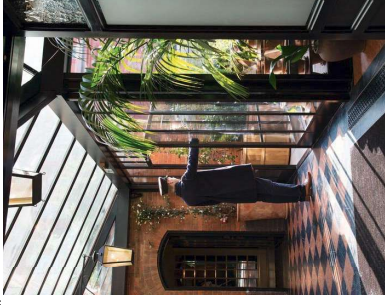


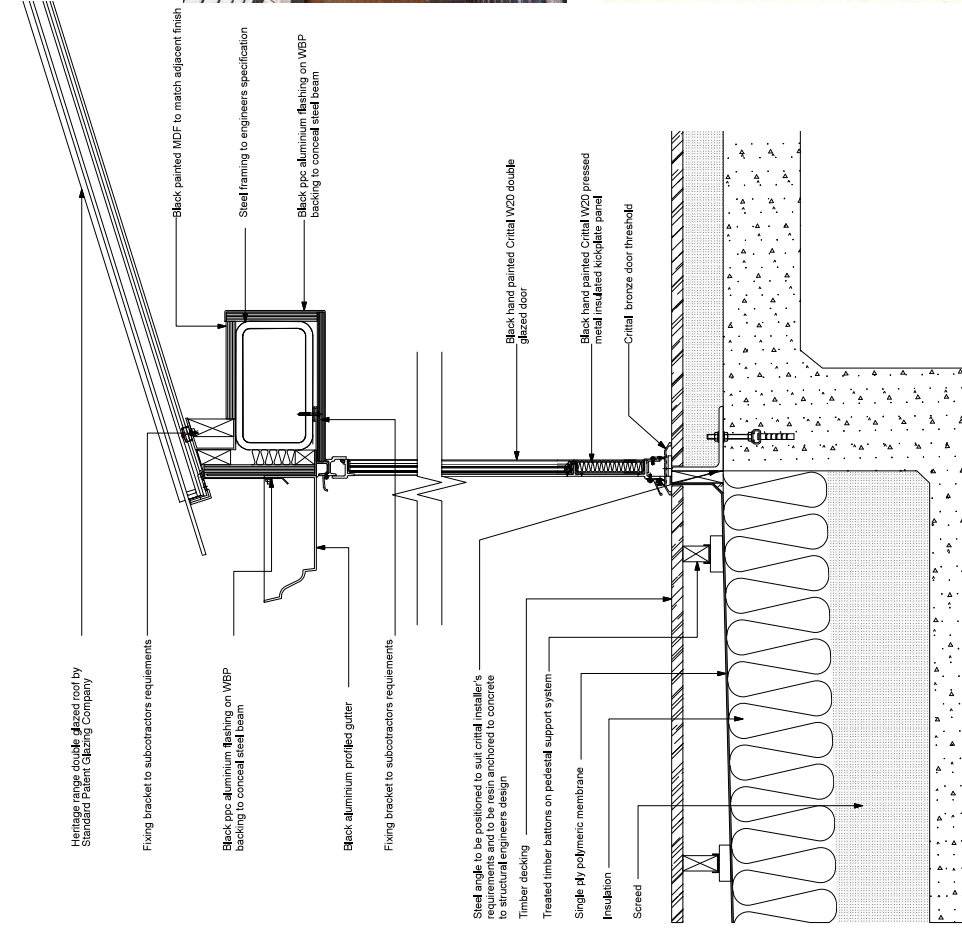
Copyright © 2015, Archer. All rights reserved. This drawing must not be reproduced without the written permission of Archer. This drawing is intended for use by the contractor only and is not to be used for any other purpose. The contractor is responsible for ensuring that the drawing is used in accordance with the contract and for ensuring that the drawing is used in accordance with the contract and for ensuring that the drawing is used in accordance with the contract.

PROJECT: SKY LABBY

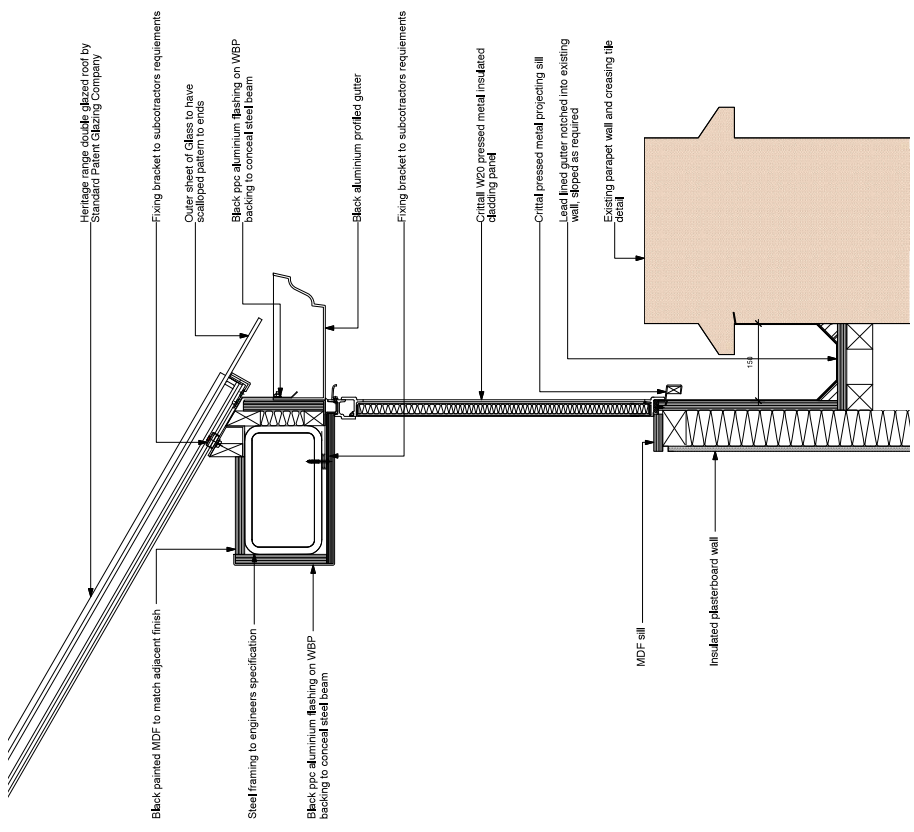


**For Information**  
**Archer Humphreys Architects**  
 Basement  
 145 Cecil Street  
 Singapore 06955  
 Tel: +65 6339 1111  
 Fax: +65 6339 1112  
 Email: info@archer-humphreys.com

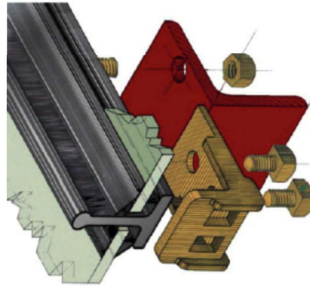
PROJECT: SKY LABBY  
 ARCHITECT: ARCHER HUMPHREYS ARCHITECTS  
 CONSULTANT: SKY LOBBY GLAZING DETAILS  
 DRAWING NO: SKY LABBY GLAZING DETAILS  
 DATE: 12/01/2015  
 SCALE: 1:50  
 DRAWN BY: J. CHEN  
 CHECKED BY: J. CHEN  
 APPROVED BY: J. CHEN



2 Detail B Scale: 1:5



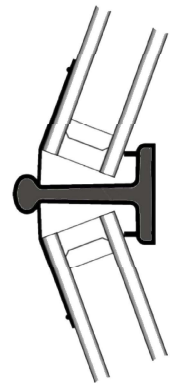
1 Detail A Scale: 1:5



6 Standard Patent Glazing exploded axonometric

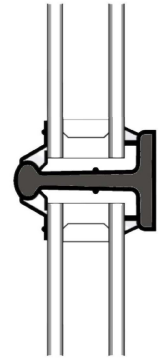


5 Standard Patent Glazing Image



Heritage LC7 DG type lead covered steel hip glazing bar - double glazed

4 Standard Patent Glazing bar details



Heritage LC7 DG type lead covered steel glazing bar - double glazed

3 Standard Patent Glazing bar details