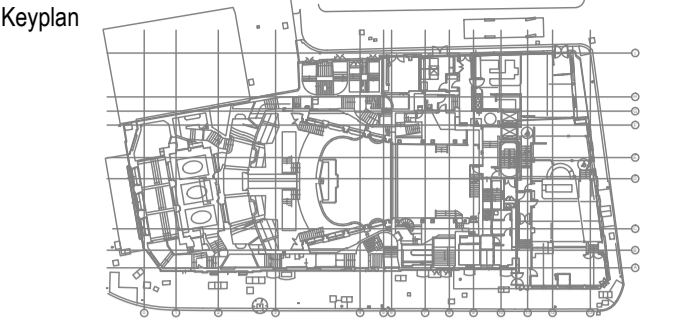
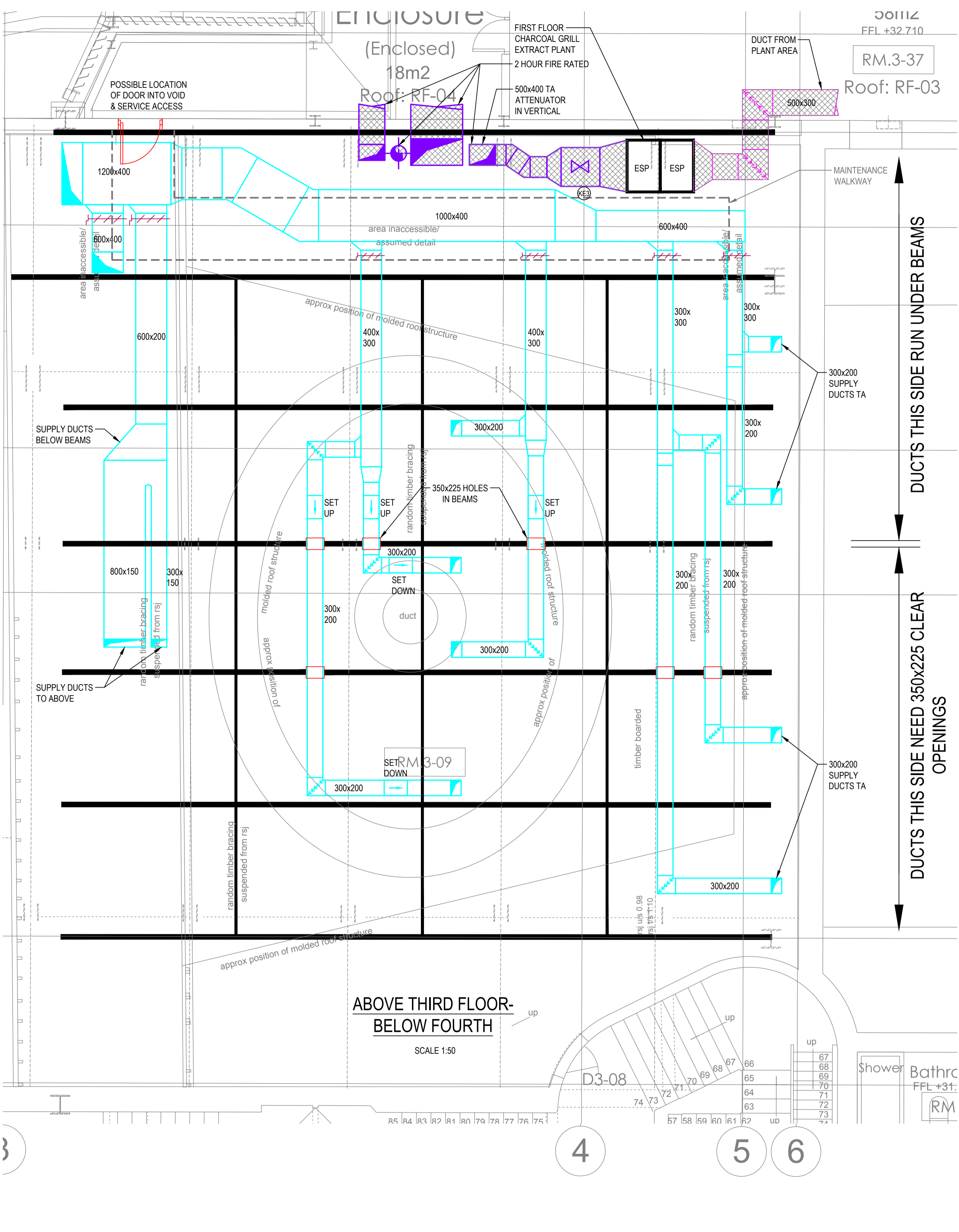
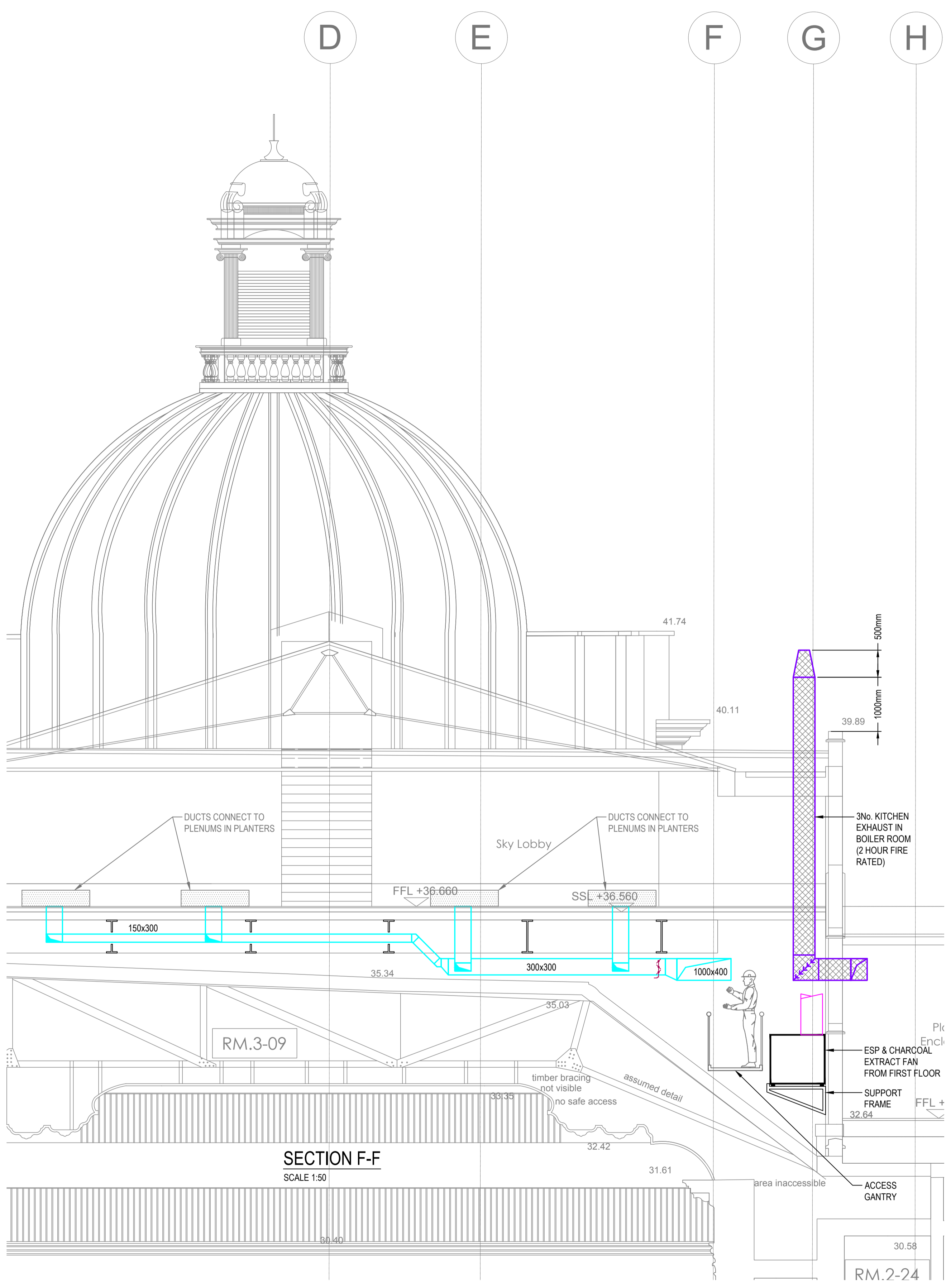


THIS DRAWING IS THE PROPERTY OF RALPH T. KING & ASSOCIATES. IT MUST NOT BE COPIED WITHOUT WRITTEN CONSENT AND IS TO BE RETURNED ON REQUEST. DIMENSIONS IN mm UNLESS OTHERWISE STATED. DO NOT SCALE FROM THIS DRAWING (PRINTED OR ELECTRONIC).



- Notes:
LEGEND
- FRESH AIR DUCTWORK
 - EXHAUST AIR DUCTWORK
 - EXTRACT DUCTWORK
 - SUPPLY DUCTWORK
 - 2 HOUR FIRE RATED KITCHEN EXHAUST DUCT
 - ACOUSTICALLY ENCASED DUCT SECTION
 - AIR HANDLING UNIT
 - FAN COIL UNIT
 - CEILING MOUNTED CASSETTE
 - TRAY AT HL IN CORRIDORS FOR DX PIPEWORK
 - UNSUPPORTED DX PIPEWORK SERVING FAN COILS
 - WALL MOUNTED FAN COIL UNIT



DUCTS THIS SIDE RUN UNDER BEAMS

DUCTS THIS SIDE NEED 350x225 CLEAR OPENINGS

| | | |
|---|-------------------|----------|
| T | ISSUED FOR TENDER | 01.03.18 |
|---|-------------------|----------|

| Rev | Description | Date |
|-----|-------------|------|
| | Revisions | |

Status: **TENDER**

Client: **KOKO**

Project: **KOKO - CAMDEN PALACE**

Title: **ABOVE THIRD FLOOR - ROOF VOID VENTILATION LAYOUT SHELL & CORE**

| | | | |
|----------------------------|------------------------------|----------------------|------------------|
| Scale @ A1 1:50 | Drawn (CAD) W.M | Engineer N.C | Date JAN'2018 |
| Project No. 1355 | Drawing No. S-M207 | Revision T | |

Ralph T. King & Associates
Consulting Mechanical & Electrical Engineers

Old Marlowes House
53 Marlowes House
Hemel Hempstead
Hertfordshire
HP1 1LE

Tel: +44 01442 838000
Fax: +44 01442 838080
Email: mail@rta.co.uk
Web: www.rta.co.uk