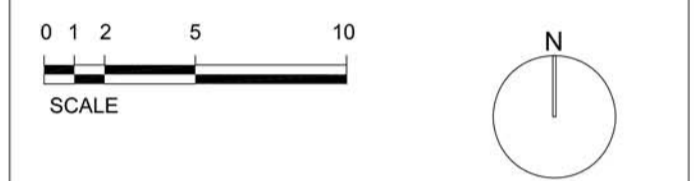


notes

- The contractor is responsible for checking dimensions, tolerances and references. Any discrepancy to be verified with the Architect before proceeding with the works.
- Where an item is covered by drawings to different scales the larger scale drawing is to be worked to.
- Do not scale drawing. Figured dimensions to be worked to in all cases.

CDM Regulations 2007

ALL current drawings and specifications for the project must be read in conjunction with the Designer's Hazard and Environmental Assessment Record.



|          |   |  |
|----------|---|--|
| 03-18    | F | Issue for Section 73 Application (MH)(BW)    |
| 03-18    | E | Planning Resubmission (RP) (BW)              |
| 10-04-17 | D | Disabled parking illustrated (BW)            |
| 16-07-15 | C | Revised to illustrate zero parking (AC) (BW) |
| 14-01-15 | B | Planning Issue (EC) (BW)                     |
| 09-12-14 | A | Draft Issue (EC) (BW)                        |

| date | rev | revision/author/checker |
|------|-----|-------------------------|
|------|-----|-------------------------|

purpose of issue  
**PLANNING**

project  
**Mansfield Bowling Club**

drawing  
**Proposed Ground Level Masterplan**

|                                  |                 |
|----------------------------------|-----------------|
| drawing no<br><b>AA4437/2131</b> | rev<br><b>F</b> |
|----------------------------------|-----------------|

|                           |                 |
|---------------------------|-----------------|
| drawn EC                  | checked BW      |
| scale @ A1/A3 1:250/1:500 | date 22/09/2014 |

PRP Architects ©  
10 Lindsey Street  
Smithfield  
London  
EC1A 9RP  
T +44 (0)20 7653 1200  
F +44 (0)20 7653 1201  
lon.prp@prparchitects.co.uk