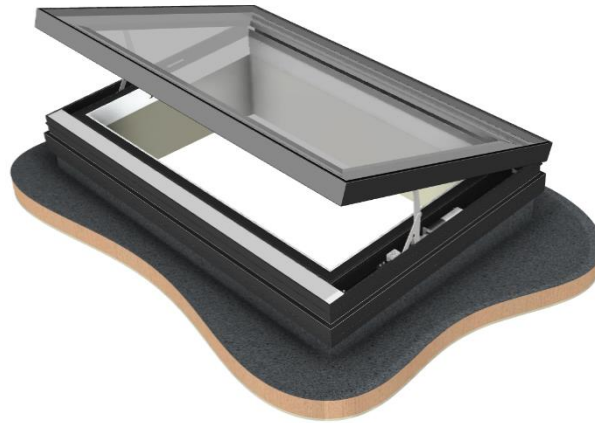


Product Data Sheet



Name: GV Standard Electric VisionVent
Code: 401
Type: Hinged ventilation rooflight
Description: Electrically-actuated thermally broken hinged rooflight (Patent: GB2514119)

Features: Excellent overall thermal performance with concealed insulation. Kerb fixings are hidden through the use of extruded external clip-on cover. Reliable operation through synchronised mechanisms employing encoder feedback. The dual-lift mechanism provides stability in the open position for the larger sizes, as well as good security and unobstructed clear views. Advanced electronics control system offering low opening currents.

There are two variants of electric VisionVent: Solo Electric Vent Only and Integrated Electric Vent Only. The integrated versions are similar to the Solo equivalent but are designed to be inset into Flushglaze framing as part of a multi-section rooflight.

The electric VisionVent is powered by an external 24V power supply as standard. Glazing Vision will provide one power supply for each electric VisionVent purchased. In the event of mains failure the VisionVent will cease to function. A battery-backed supply is available as an optional extra.

The VisionVent mechanisms have an encoder output used by the control electronics to achieve closed loop synchronisation.

Standard Glass Specification: Outer: 6mm HST Clear Toughened.
Spacer: 20mm Warm Edge Black Silicone-Sealed Argon-Filled Cavity.
Inner: 6mm HST Clear Soft Low E Toughened.

Standard Colours: RAL 7015 grey external framework and RAL 9010 white internal framework.

Rooflight Control: Intelligent wall switch as standard. Optional controls available.

Power Supply: External 24V 300W mains-powered supply.

Drive Mechanism: Motor-driven scissor linkage mechanism with encoder feedback.

Thermally Broken: Yes.

Seals: Combination of silicone, TPE bubble seals and dual-hardness EPDM gasket.

Security: Mechanisms cannot be back-driven due to motor gearing reduction and mechanisms cannot be disconnected from lid from outside whilst closed. Rooflight base is sealed to upstand with polybutyl sealant.

Solo Electric Vent Only VisionVent Kerb Dimensions:

Min Span = 808mm	Max Span = 2365mm
Min Width = 845mm	Max Width = 2400mm

Integrated Electric Vent Only VisionVent Dimensions:

Min Span = 902mm	Max Span = 2402mm
Min Width = 882mm	Max Width = 2402mm

All Variants Kerb Requirements:

Min Pitch = 3°	Max Pitch = 70°
Min Height = 150mm	Min Thickness = 100mm

Use for Access: No.

Sales Drawings:

<u>Drawing Number</u>	<u>Description</u>
401-ASS-400	VisionVent General Arrangement
401-ASS-401	VisionVent Kerb Detail
401-ASS-402	VisionVent Rain Sensor Positioning
401-ASS-403	VisionVent Client Wiring Diagram
401-ASS-405	VisionVent Solo Electric Section
401-ASS-406	VisionVent Integrated Sections
401-ASS-407	Section A-A Through Integrated VisionVents
401-ASS-408	Section B-B Through Integrated VisionVents
401-ASS-411	VisionVent Wall Abutment Detail

Optional extras

Rain Sensor:	YES	Battery back-up:	YES
Security System Integration:	NO	Rain Sensor Overrides:	N/A
Thermostat:	YES	Dual Colour:	AS STANDARD
BMS Integration:	NO	Special Colour:	YES
Trickle Vents:	NO	Solenoid Bolt:	N/A
Wall Abutted:	YES (Bespoke)	Downlighter:	N/A
Round:	NO	Multi-Part:	N/A
RITEC Coating:	YES	Remote Control:	YES
Multi-Part with Glass Fins:	N/A		