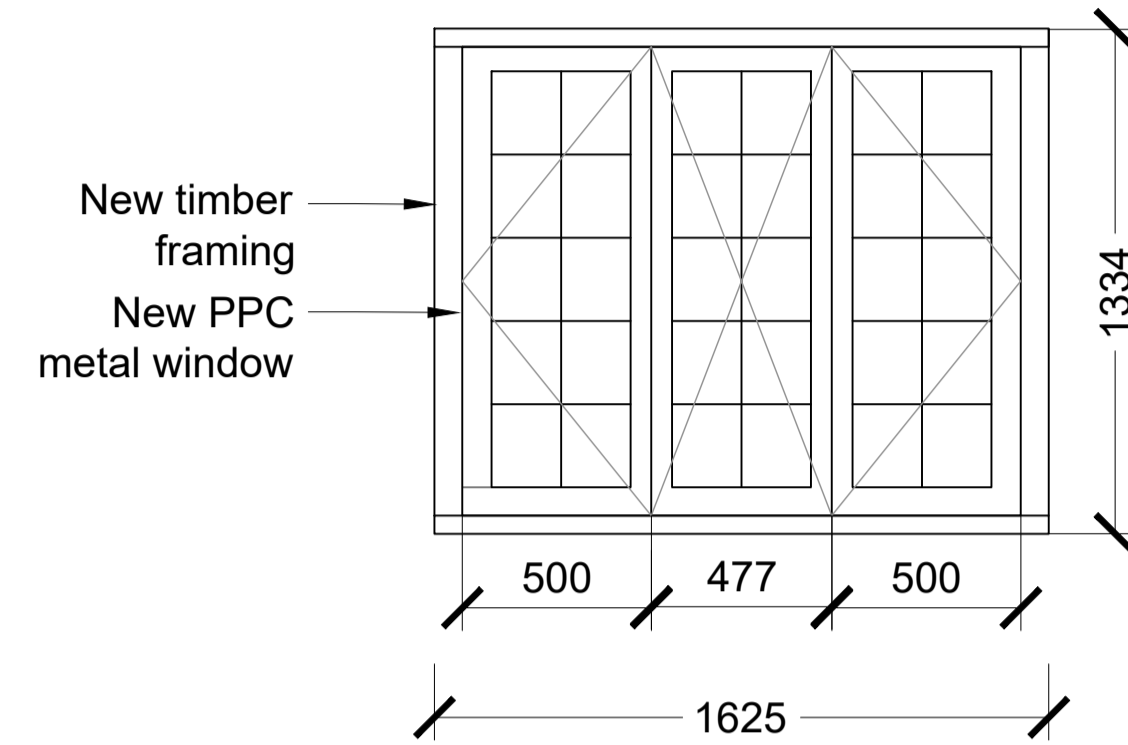
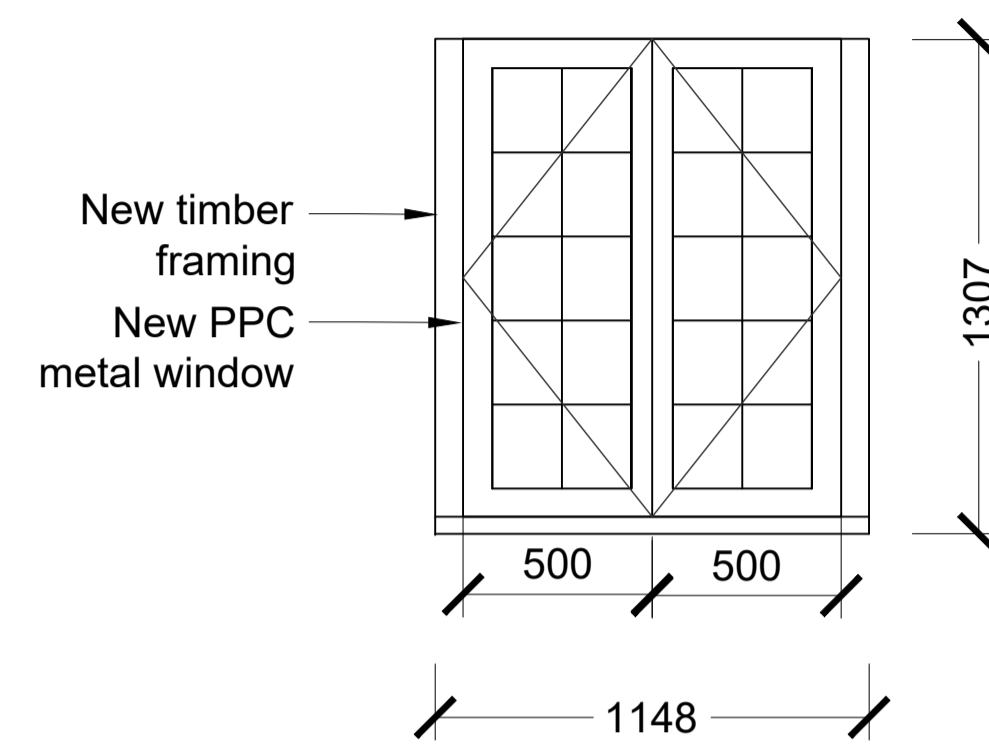


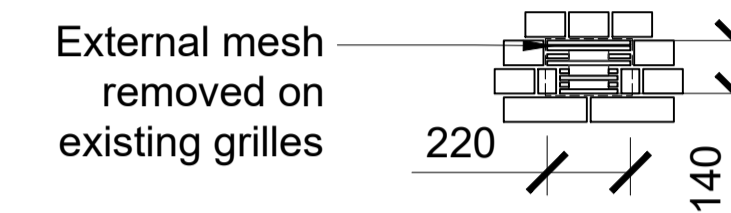
1 - Elevation
W201, W202, W217
Fire Rating: NA



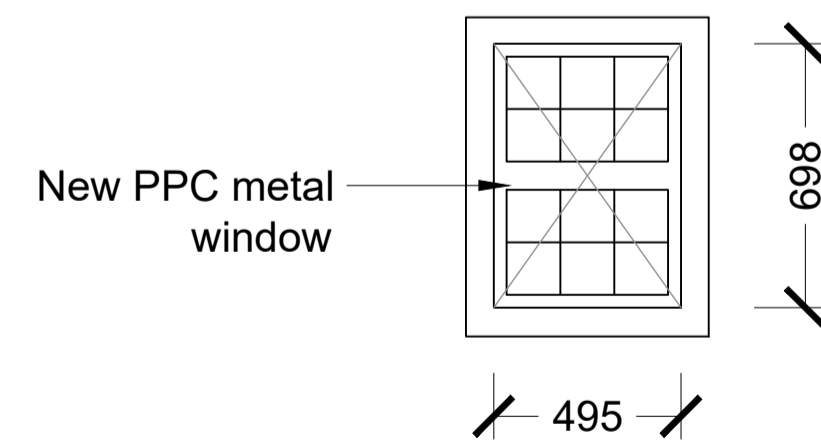
2 - Elevation
W203, W204, W205, W206, W212
Fire Rating: NA



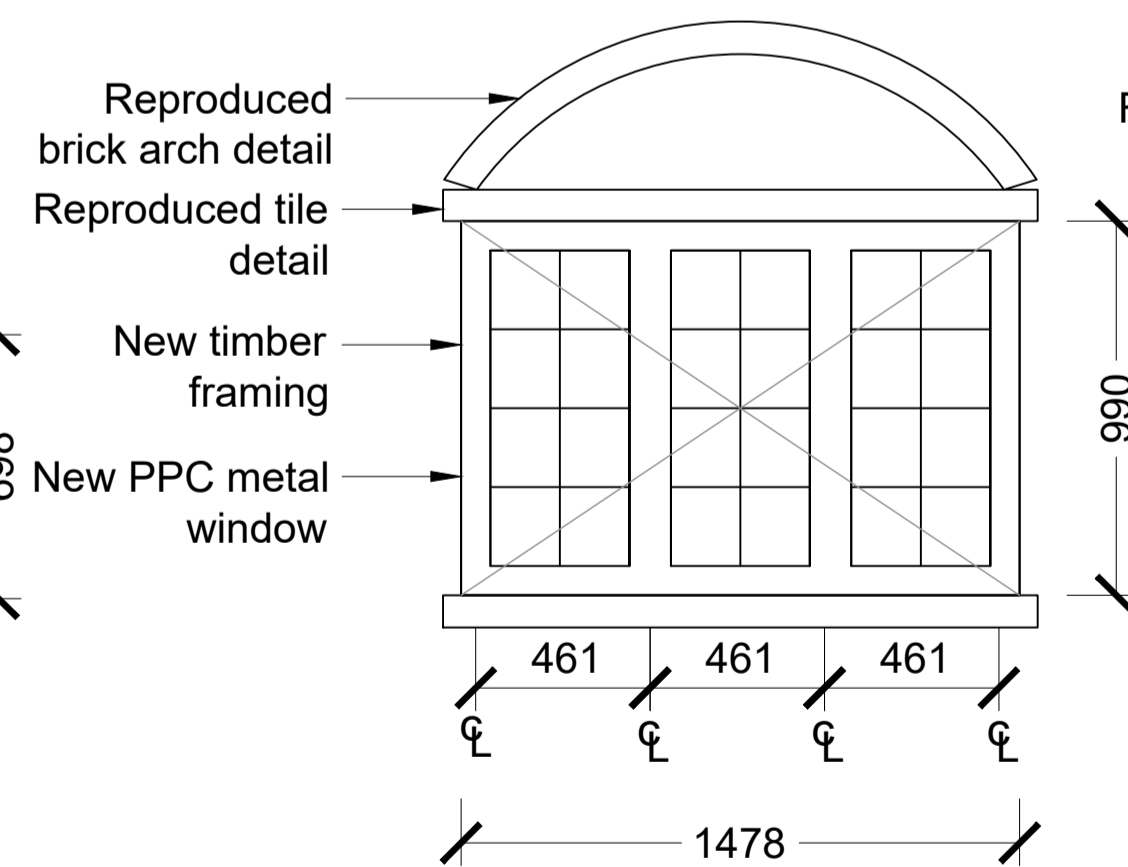
3 - Elevation
W209, W210, W211
Fire Rating: NA



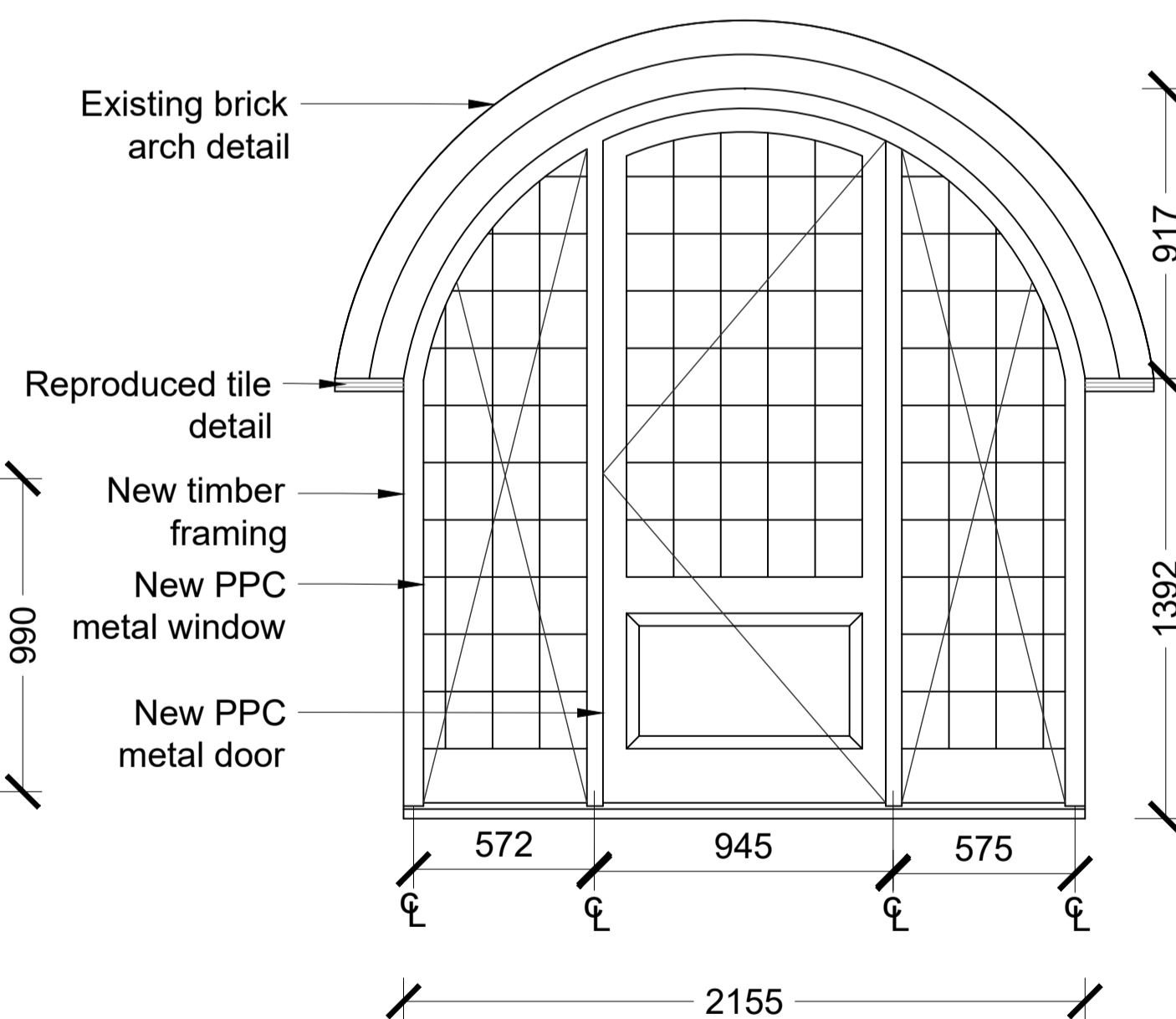
4 - Elevation (Grille)
Typical Grille Detail
Fire Rating: NA



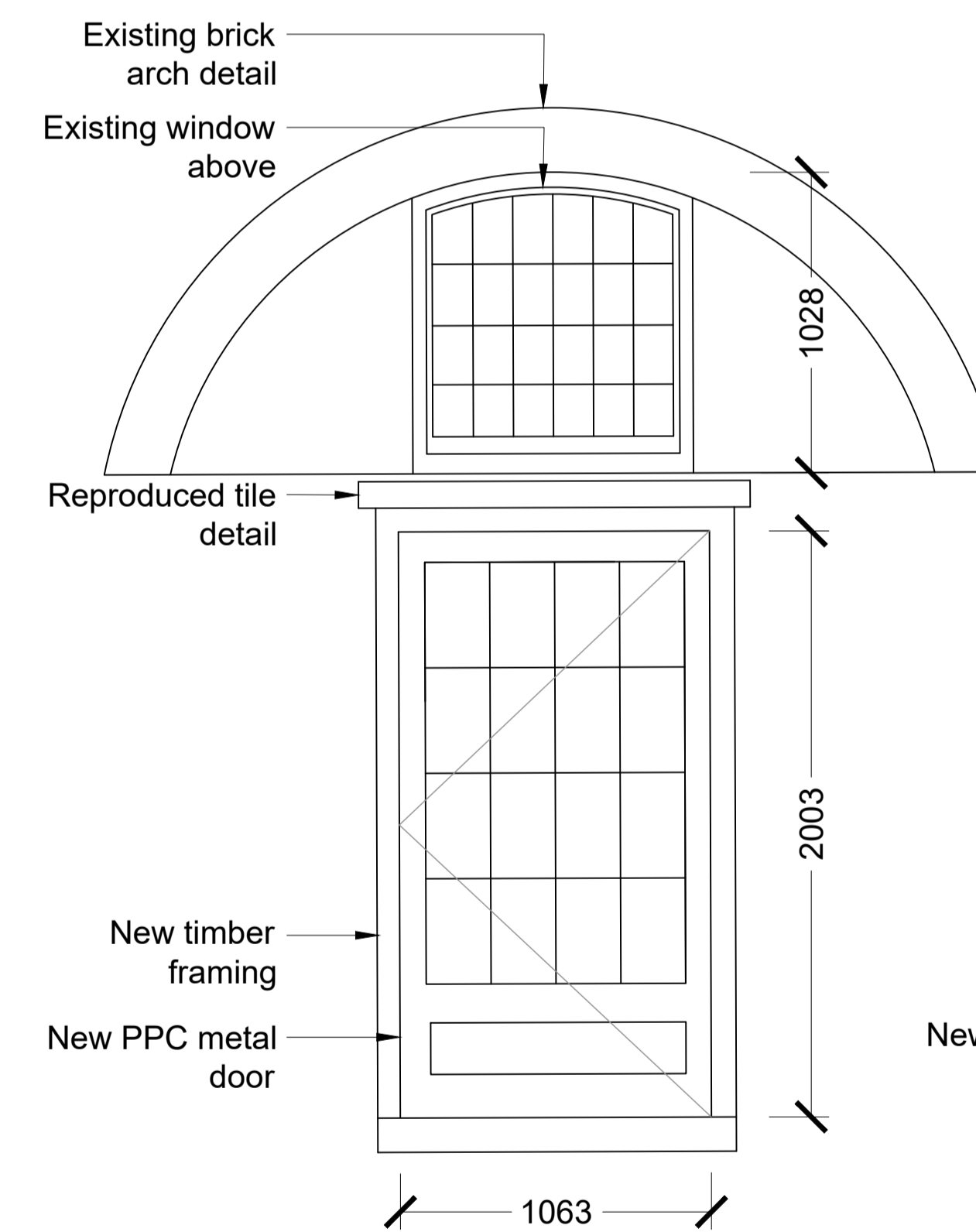
5 - Elevation
WB01
Fire Rating: TBC



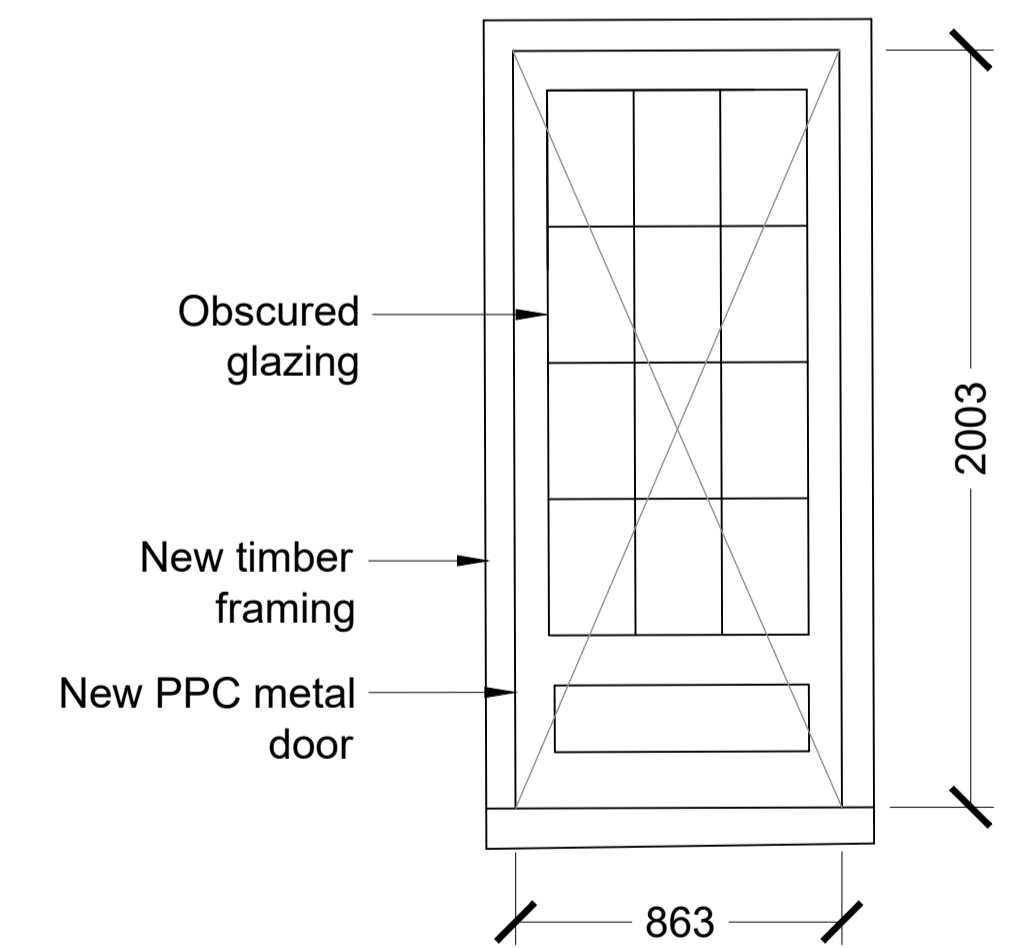
6 - Elevation
WB05
Fire Rating: TBC



7 - Elevation
WB13 + WB12 + EXDB08
WB11 + WB10 + EXDB07
WB09 + WB08 + EXDB06
Fire Rating: TBC



8 - Elevation
EXD11 + WG32
Fire Rating: TBC



9 - Elevation
EXDG10
Fire Rating: TBC

Revisions					Revisions						
Rev	Date	By	Description	Checked	Approved	Rev	Date	By	Description	Checked	Approved
P1	23.03.18	RB	Planning Conditions Discharge	JM	RH						

A1

Architect / Originator: Tate Harmer	Unit G182, Stamford Works, 3 Giltwell Street, London N16 6JH Tel: +44 (0)207 241 7481 Email: studio@tateharmer.com	Do not scale. All dimensions to be checked on site. This drawing is copyright.
Client: Platinum Land	8 Quorn Road, 1 Duke of York Square, Kings Road, London, SW3 4LY	
Project: Belsize Park Firestation		Date of Origin: 28.11.17
Drawn By: ABF		Scale: 1:20
Client Sign Off	Drawing Number: BFS THA PR AL 520 P1	Revision Planning