



Burd Haward Architects  
United House  
North Road  
London N7 9DP  
[www.burdhaward.com](http://www.burdhaward.com)

T +44 20 7267 9815

### **Material and Finish Data Sheets**

To accompany Planning Conditions Discharge Application  
(ref: 2106/2038/L, Condition 4)

#### Contents:

01	Timber decking
02	Anodised aluminium
03	York Stone Paving
04	London Stock Brick

01

**Timber decking**  
Thermowood decking



## COLOUR

· ThermoWood® decking is a rich golden colour similar to that of Hardwood which if left untreated will fade to a silvery grey once exposed to the elements.

## TREATMENT

- ThermoWood® decking is heat treated to class Thermo-D at temperatures of 212°C making it suitable for external use.
- There are three main phases to the treatment process:
  1. Using heat and steam the temperature in the kiln is raised to 100°C. Thereafter the temperature is raised to 130°C allowing the drying process to take place and the moisture content decreases to almost zero.
  2. Once the drying has taken place the kiln temperature is raised to 212° and this constant temperature remains for 2-3 hours depending on the end use application.
  3. Finally the temperature is lowered with water spray systems. When 80-90°C is reached re-moisturising takes place allowing the wood moisture content to rise to a useable level of 4-7%.

## CLEANING AND MAINTENANCE

- General maintenance including regular cleaning with a mild detergent will extend the life of ThermoWood® decking.
- To maintain the rich colour treat the ThermoWood® annually with a deck oil or standard preservative deck treatment.

## FIXING INSTRUCTIONS

- ThermoWood® deck boards can be fixed with standard deck screws or clips.
- The deck boards should be supported at a maximum of 400mm centres.

## FIRE PERFORMANCE

- According to EN13501 (SBI Test) ThermoWood® is in a reaction to fire class D. It is possible to treat further with fire protective treatments in order to achieve fire class rating 1 Spread of Flame.

## MOISTURE CONTENT

- The product has a moisture content of 5-7% (50%RH) when packed in production.
- This level will change according to atmospheric conditions.



## PRODUCT DISPOSAL

- ThermoWood® is not a hazardous substance and can be treated as a standard softwood product when disposing.
- Any excess material can also be recycled.

## PRODUCT INFORMATION

Dimensions	32 x 125mm nominal / 26 x 118mm finished
Species	Scandinavian Softwood
Certification	PEFC / DeckMark Approved
Description	Dual deck board grooved 1 side / Smooth 1 side
Guarantee	15 year guarantee
Product features	15 year guarantee against rot and fungal decay Precision finish Kiln dried Hard wearing Matching accessories available

## FURTHER INFORMATION

- Please refer to our decking brochure and also our deck fixing guidelines brochure
- [www.metsawood.co.uk/products/decking](http://www.metsawood.co.uk/products/decking)

## METSÄ WOOD

Telephone: 0800 00 44 44

Email: [uk@metsagroup.com](mailto:uk@metsagroup.com)

[www.metsawood.co.uk](http://www.metsawood.co.uk)

02

**Anodised Aluminium**

Aluminium datasheet

Anodised finish samples datasheet

Anodised finish sample photograph



Specification | IQ Aluminium Pressings and Flashings

## The IQ Aluminium Pressings and Flashings Division

### Product Description

Modern aluminium pressings or flashings suitable for all IQ Glass projects.  
Suitable for hiding unsightly construction elements, waterproofing or as cladding.

### Material

Milled Aluminium / Stainless Steel

**Thickness** 2mm standard (3/4mm thicknesses might be used on thin pressing strips for stability)

**Colour** Mill Aluminium can be powder coated any RAL colour / Anodised  
Maximum Size 3000mm maximum length in single panel. Longer lengths can be created by welding multiple pressings together, polishing the weld and powder coating

### Folds

All types of folds available

**Maximum Angle** 0 to 180 degree

### Edges

**Exposure** Exposed / Hidden

**Finish** Standard Cut / Laser Cut for a smooth exposed edge

### Options

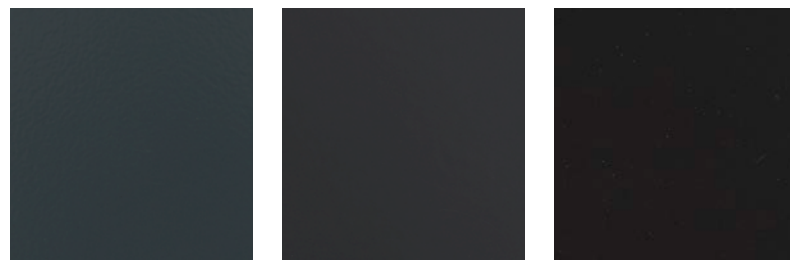
**Punches** Punches or patterns can be cut into a flat piece of aluminium using CNC machine

### Construction and Installation

Opening doors can be installed within any fire rated wall material or within a fixed glass partition with appropriate fire rated frame. All installation to be carried out by IQ Glass in accordance with IQ Glass design drawings which are produced uniquely per project with an assumed wind load of  $0.65 \text{ kN/m}^2$  unless otherwise specified



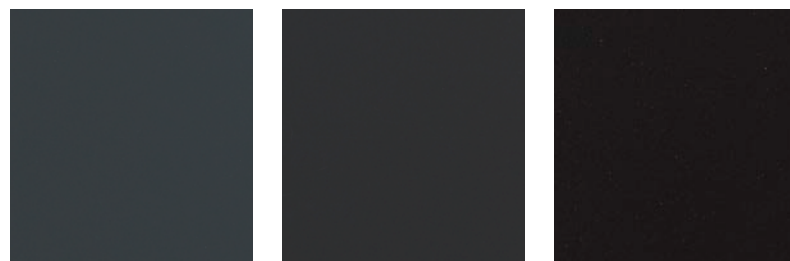
# ALUMINIUMKLEUREN



KEL RAL 7016 Shiny

KEL RAL 7021 Shiny

KEL RAL 9005 Matt



KEL RAL 7016 Matt

KEL RAL 7021 Matt

KEL RAL 9005 FS



KEL RAL 7016 FS

KEL RAL 7021 FS

KEL RAL 7024 FS

## Alanox



KEL E6 / C0

## Eloxal / Eloxal



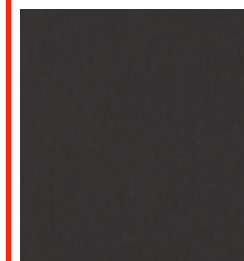
KEL E6 / C0



KEL E6 / C33



KEL E6 / C31



KEL E6 / C34

Dark Bronze  
anodised finish



KEL E6 / C32



KEL E6 / C35

**VOA**  
www.voa.de

C-0

C-31

C-32

C-33

C-34

C-35

Anodised aluminium finish





03

**York Stone Paving**

Marshalls Scoutmoor York Stone Data Sheet





Scoutmoor, Trafalgar Square

# Scoutmoor

Yorkstone Paving



Scoutmoor, Capital Finish



Scoutmoor, Diamond Sawn

Scoutmoor Yorkstone is a mainly Blue Grey stone with occasional Brown mainly elliptical shaped shading. With over 100 years' history of supply this peerless Yorkstone has proven itself in the highest loading and intensive wearing environments. The choice for iconic places such as Trafalgar Square and Regent Street it is Marshalls' most popular Yorkstone and has been used widely throughout the UK. Scoutmoor is also a very versatile Yorkstone allowing designers to add in creative features and details to enhance the landscape.

Scoutmoor Diamond sawn	300mm wide x Random lengths	450mm wide x Random lengths	600mm wide x Random lengths
50mm thick	A00336	A00331	A00326
63mm thick	A00311	A00306	A00301
75mm thick	A00276	A00268	A00263

	Paving	Setts	Kerbs	Tactile	Specials
Scoutmoor	•	•	•	•	•

**N55Plus**  
 Q25 310 Q25 330  
 Q25 320 Q10 120  
 kg  
 CO<sub>2</sub> per m<sup>2</sup>

For the latest carbon value visit  
[www.marshalls.co.uk/commercial/carbon-calculator](http://www.marshalls.co.uk/commercial/carbon-calculator)



