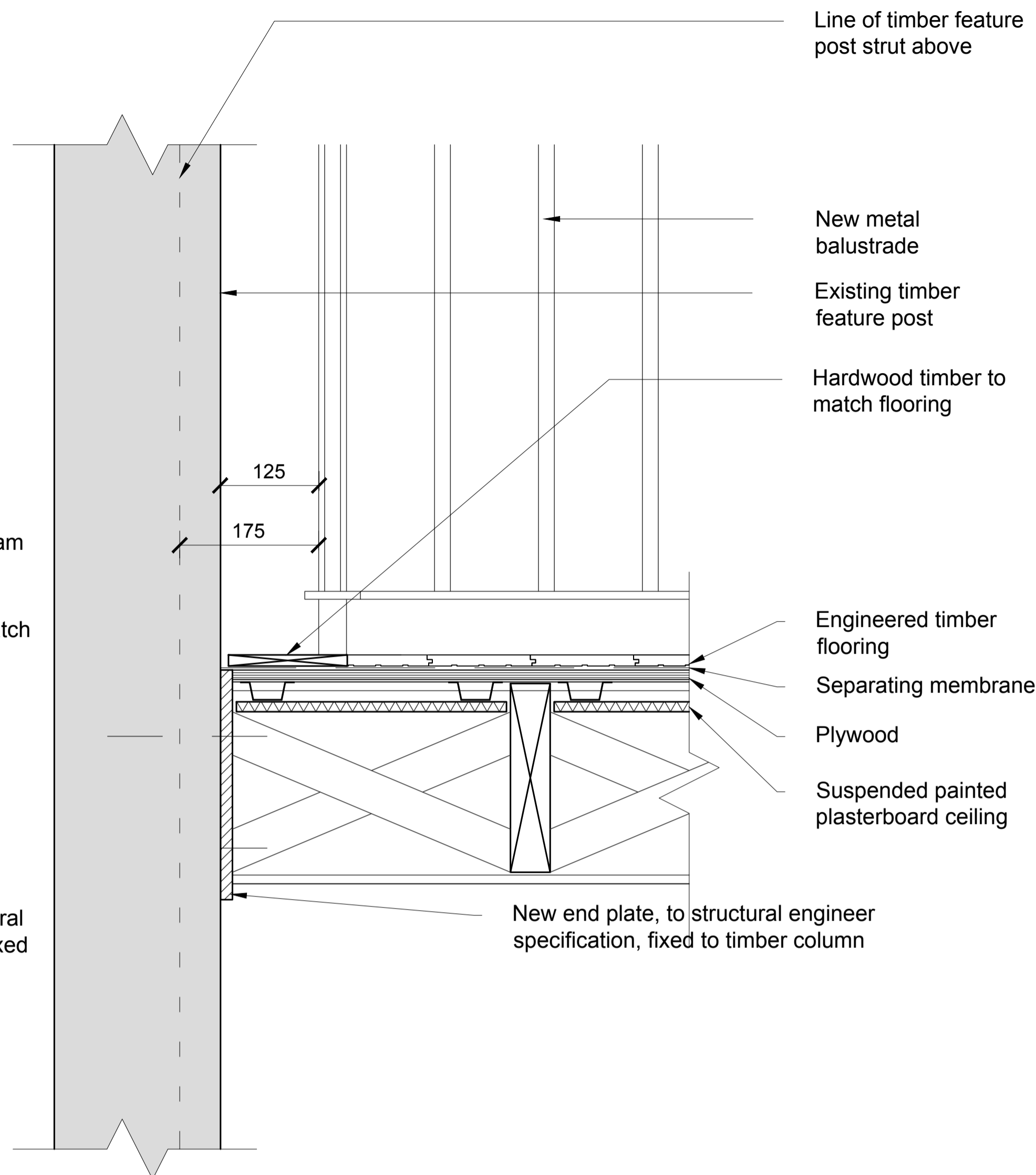
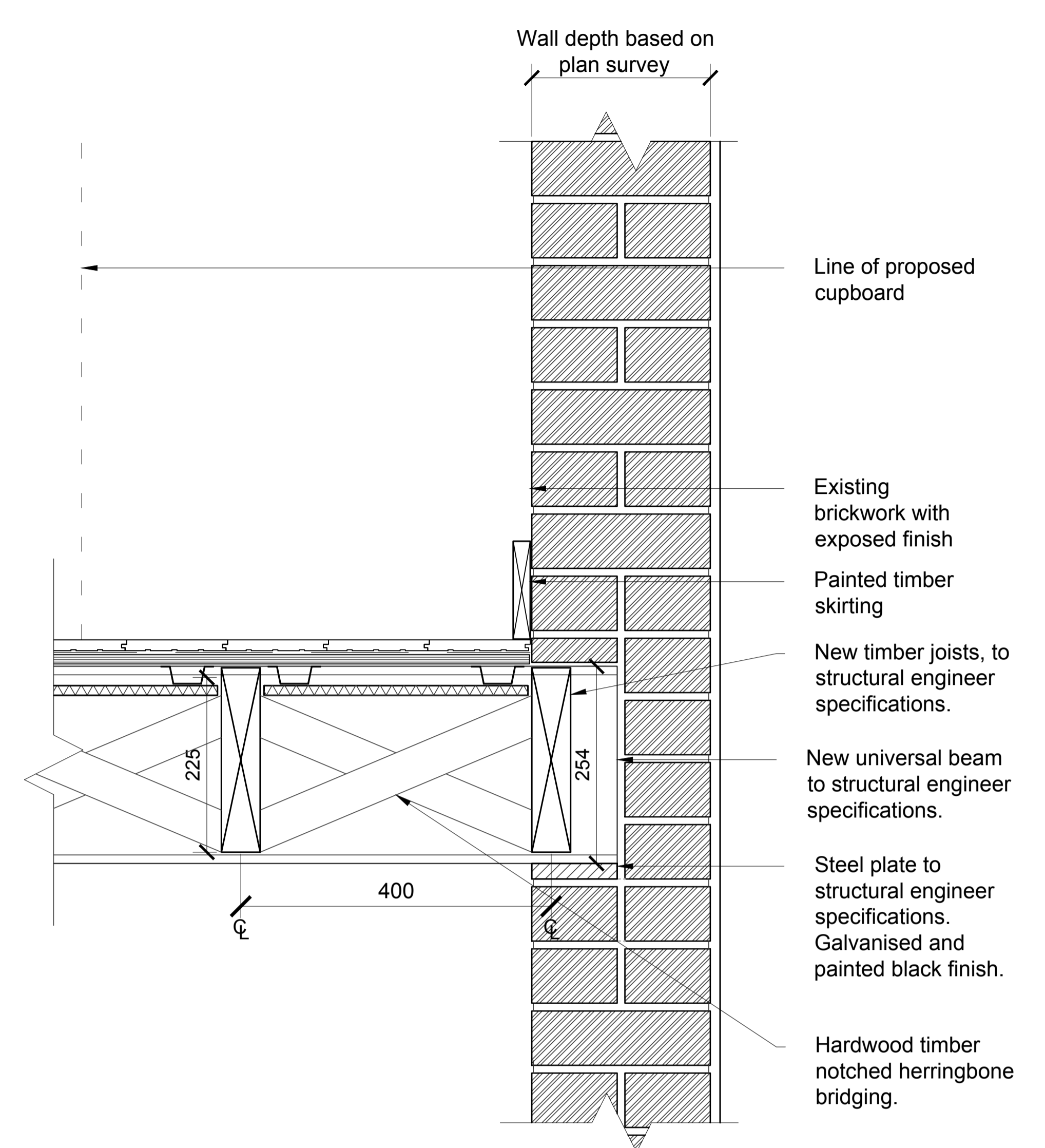


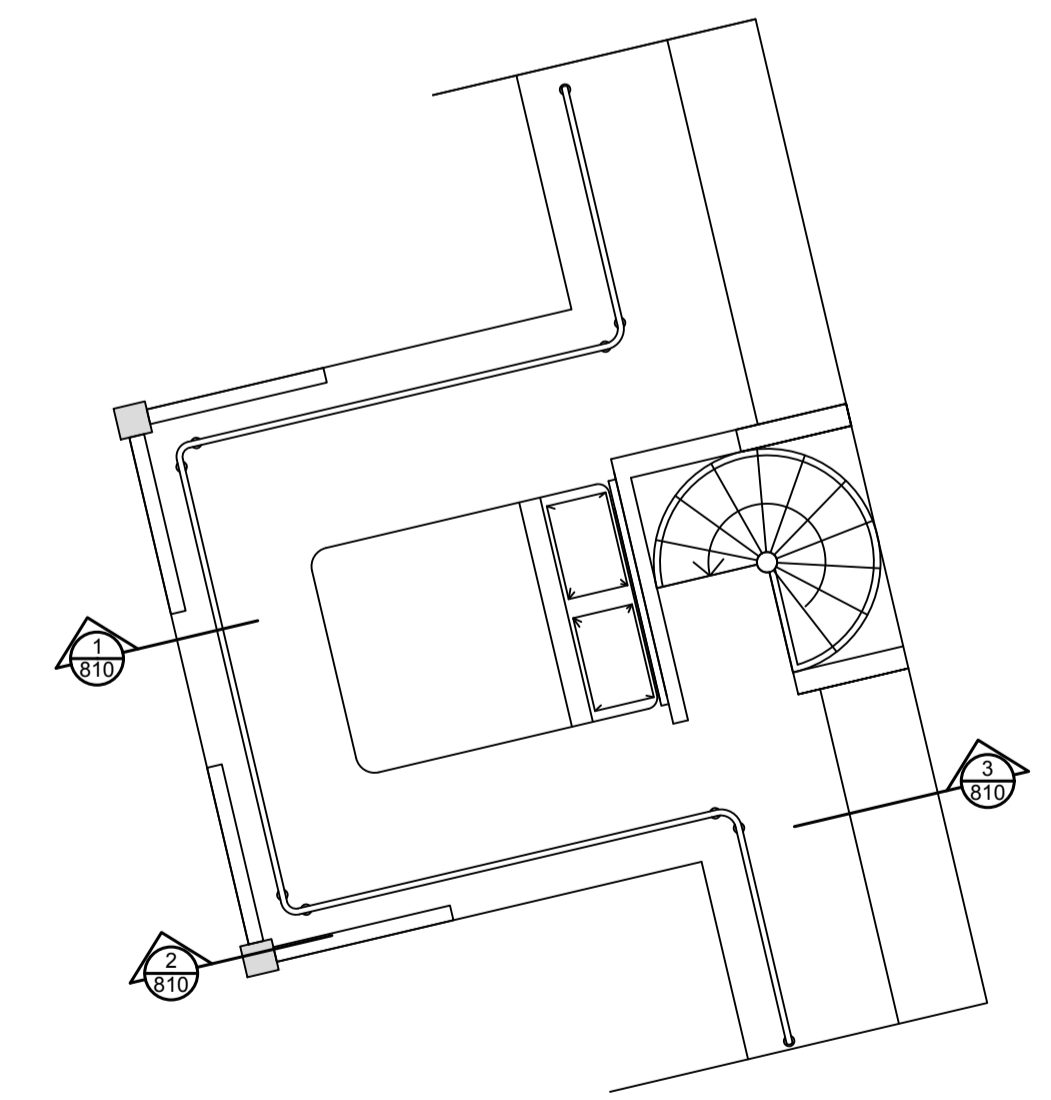
**1 - MEZZANINE SECTION DETAIL:
BALUSTRADE AND MEZZANINE EDGE**



**2 - MEZZANINE SECTION DETAIL:
EXISTING TIMBER COLUMN**



**3 - MEZZANINE SECTION DETAIL:
EXISTING WALL**



MEZZANINE KEY PLAN 1:50

Revisions		Revisions	
Rev	Date	By	Description
P1	01.03.18	RB	Planning Conditions Discharge
P2	08.03.18	RB	Planning Conditions Discharge

A1

Architect / Originator: Tate Hamner	Unit G182, Stamford Works, 3 Gillet Street, London N16 6JH Tel: +44 (0)207 241 7481 Email: studio@tatehamner.com	Do not scale. All dimensions to be checked on site. This drawing is copyright.
Client: Plasnum Land	8 Querpel House, 1 Duke of York Square Kings Road, London, SW3 4LY	Date of Origin: 28.11.17
Project: Belsize Park Firestation		Drawn By: ASB
Drawing Title: Apartment 8 Mezzanine Floor Detail		Scale: 1:5
Client Sign Off	Drawing Number: BFS THA PR AL 810 P2	Drawing Status: Planning