

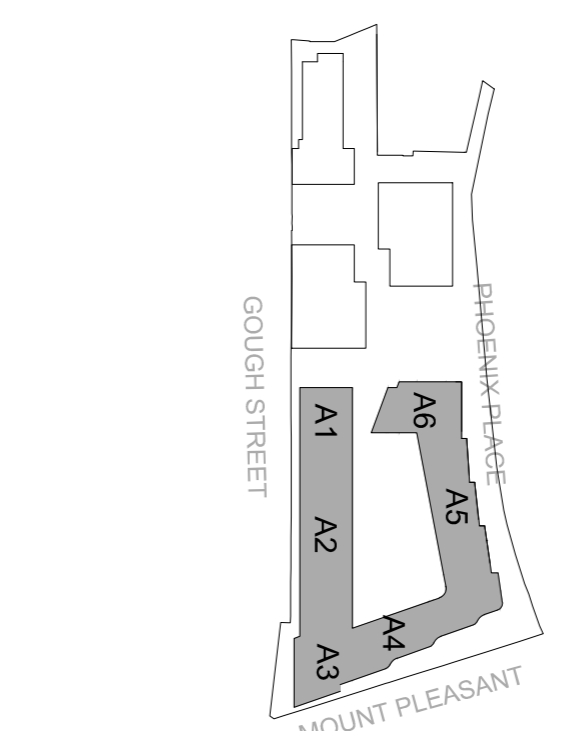
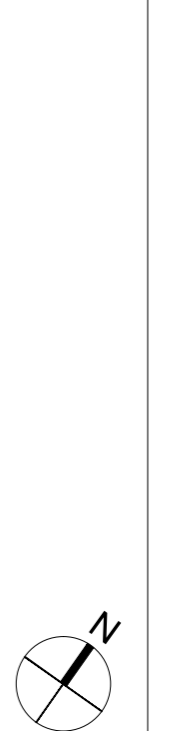
Contractors and consultants are not to scale dimensions from this drawing



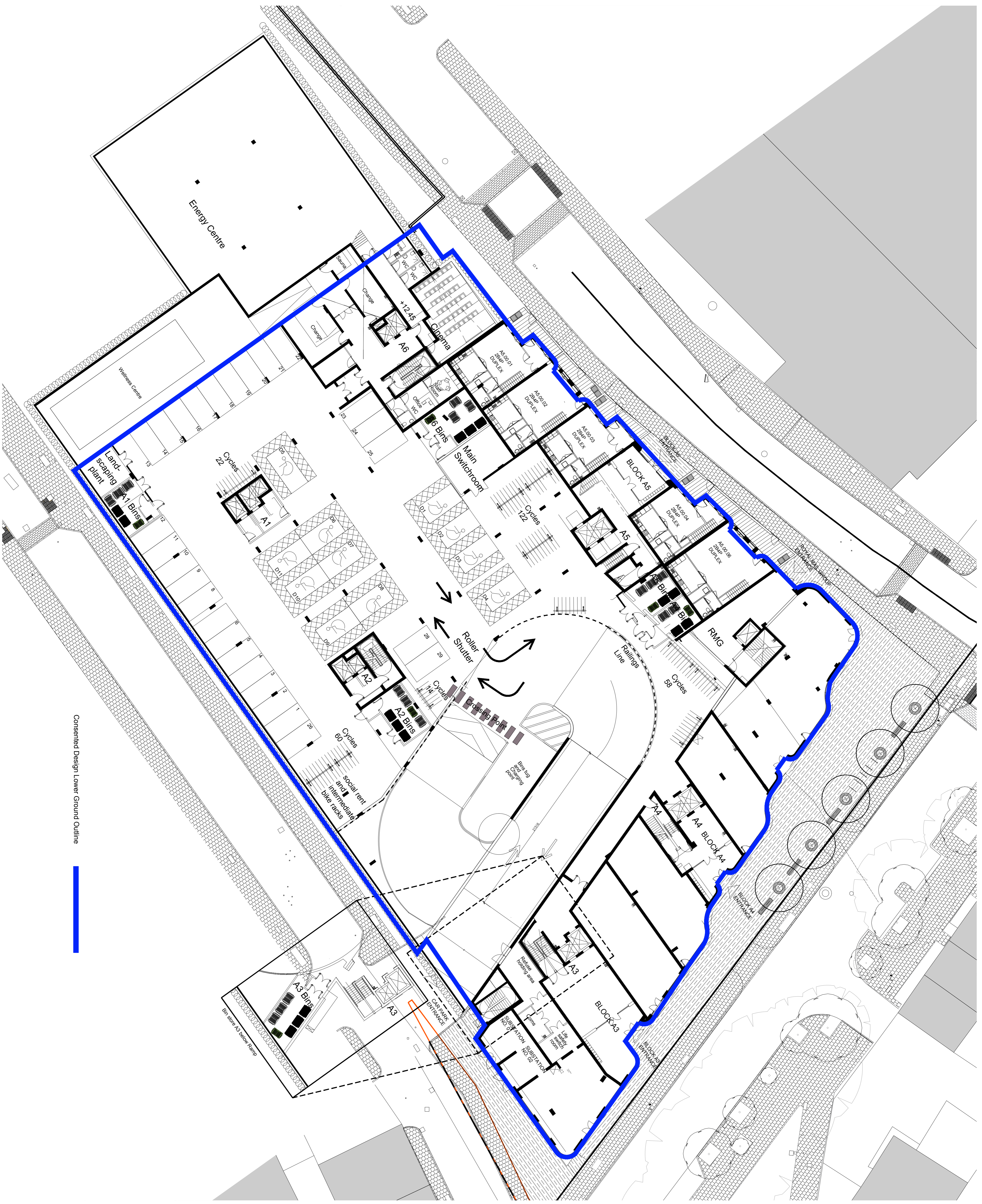
Reproduced by permission of Ordnance Survey on behalf of HMSSO
 © Crown Copyright and database right 2008 All rights reserved
 Ordnance Survey Licence number: AL 1001 2012 Broadway Malayan Limited

The survey information shown on this drawing is based on a topographical survey prepared by a third party and Broadway Malayan Limited accept no responsibility for the accuracy or completeness of the survey.

Please note: Drawings to read in conjunction with the associated Design & Access Statement, associated documents and landscape information



Design narrative reference points



Consented Design Lower Ground Outline



Revision	Date	Description
P01	18.03.20	Final Issue

BroadwayMalayan BM
 Example, 2 Castle Street
 Castletide, Manchester
 M3 4LZ
 T: +44 (0)161 819 2277
 F: +44 (0)161 819 2332
 E: info@broadwaymalayan.com
 www.broadwaymalayan.com

Client: Taylor Wimpey Central London
 Project: RMG Mount Pleasant
 Phoenix Place Plot P1
 Description: Block A Proposed Lower Ground Level
 Level G00
 Consented Low Ground Extents

Status: NON-MATERIAL AMENDMENTS
 Scale: 1:200@A1
 Job Number: 32875
 Drawing Number: P-03-G00-A
 Revision: P01
 Date: FEB 18
 Drawn By: LW
 Checked By: P01

Original size 100mm @ A1 Copyright Broadway Malayan Limited