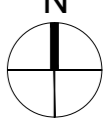


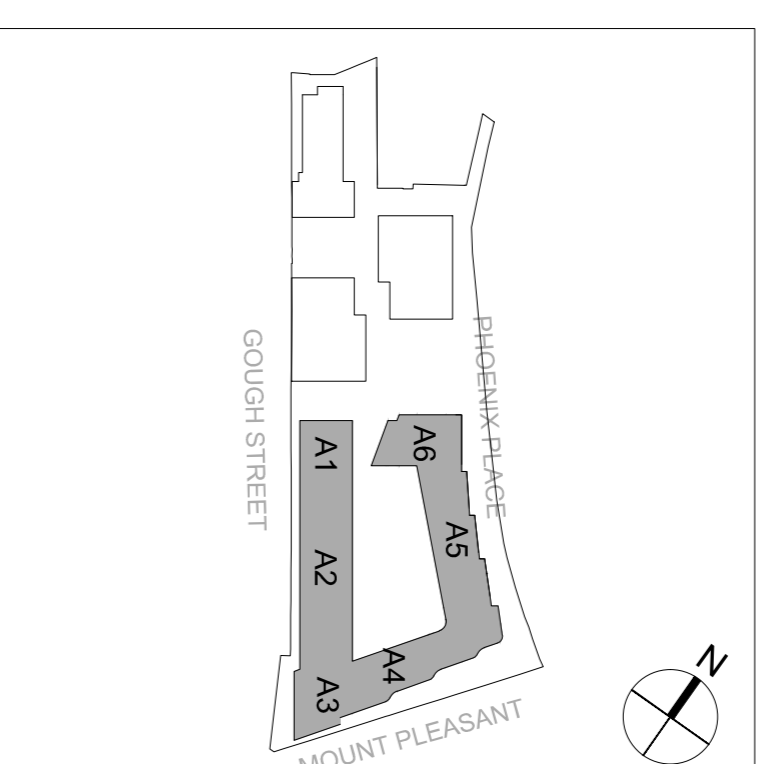
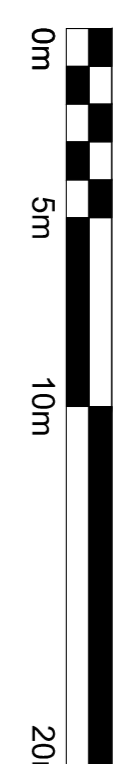
Contractors and consultants are not to scale dimensions from this drawing



Reproduced by permission of Ordnance Survey on behalf of HMRSO
© Crown Copyright and database right 2008 All rights reserved
Ordnance Survey Licence number: AL 1001 2012 Broadway Malayan Limited

The survey information shown on this drawing is based on a topographical survey prepared by a third party and Broadway Malayan Limited accept no responsibility for the accuracy or completeness of the survey.

Please note: Drawings to read in conjunction with the associated Design & Access Statement, associated documents and landscape information



Design narrative reference points



Consented Design Basement Outline

Revision	Date	Description
P01	18.03.23	Final Issue

BroadwayMalayan BM

Ensignle, 2 Castle Street
Castlefield, Manchester
M3 4LZ
T: +44 (0)161 819 2277
F: +44 (0)161 819 2332
E: info@broadwaymalayan.com
www.broadwaymalayan.com

Client
Taylor Wimpey Central London
Project
**RMG Mount Pleasant
Phoenix Place Plot P1**
Description
**Block A Proposed Basement Plan
Level B00
Consented Basement extents**

INFORMATION

Status
Scale
1:200@A1
Job Number
32875

Drawn By
LW
Revision
P-03-B00_A

Date
FEB 18
Revision
P01

Original size 100mm @ A1 Copyright Broadway Malayan Limited