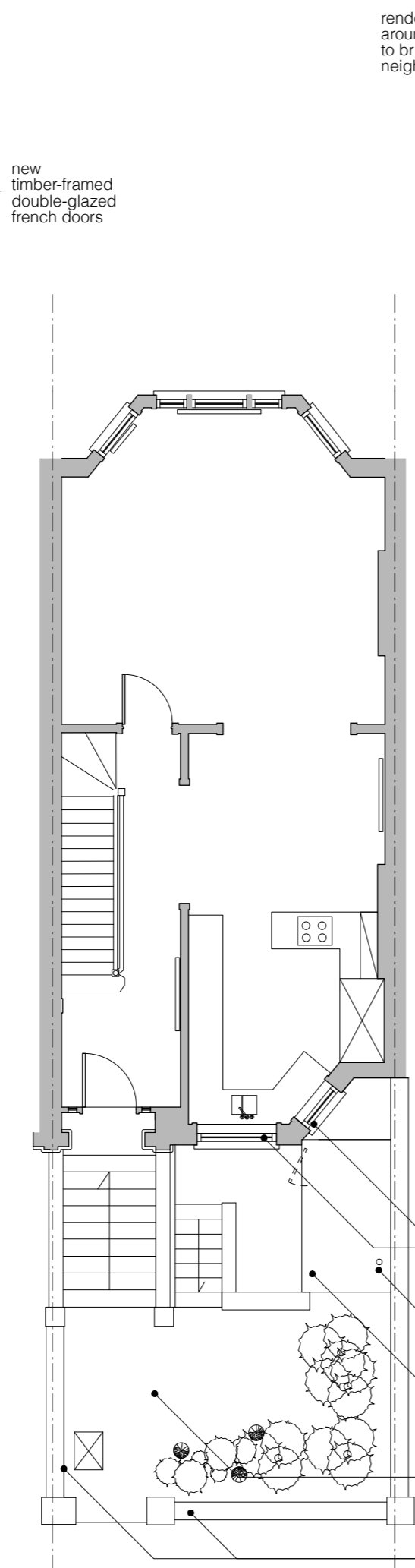


BASEMENT FLOOR PLAN



GROUND FLOOR PLAN

render removed from around porch and restored to brick - to match neighbouring house

local masonry repairs to façade

new timber-framed double-glazed casement windows on existing frame reveal line, fenestration pattern restored to original and to match neighbouring house, stained glass retained - refer to 62FG-PL-22

local masonry repairs to façade



FRONT ELEVATION

new timber-framed double glazed casement windows on existing frame reveal line, fenestration pattern restored to original and to match neighbouring house, stained glass retained - refer to 62FG-PL-22

new timber-framed double-glazed french doors - refer to 62FG-PL-23

walls built-up to increase height of lightwell store, re-rendered and new flat roof - refer to 62FG-PL-21

new boiler flue

new flat roof at 150mm below garden wall - refer to 62FG-PL-21

new stone paving and steps

brick piers, boundary and pavement wall re-built on improved footings - refer to 62FG-PL-21



REAR ELEVATION

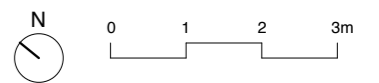
new timber-framed double-glazed french doors (all other windows and doors unaltered)

Key

Notes

Revisions

- A. 25.01.18 First Issue for planning
- B. 02.03.18 Issued for planning - existing window materials noted
- C. 28.03.18 Issued for planning



62 Fairhazel Gardens

Plans and Elevations  
As Proposed

Scale 1:100 @ A3 25.01.2018

62FG-PL-20

Rev C

*The*  
**Vawdrey  
House**

© The Vawdrey House