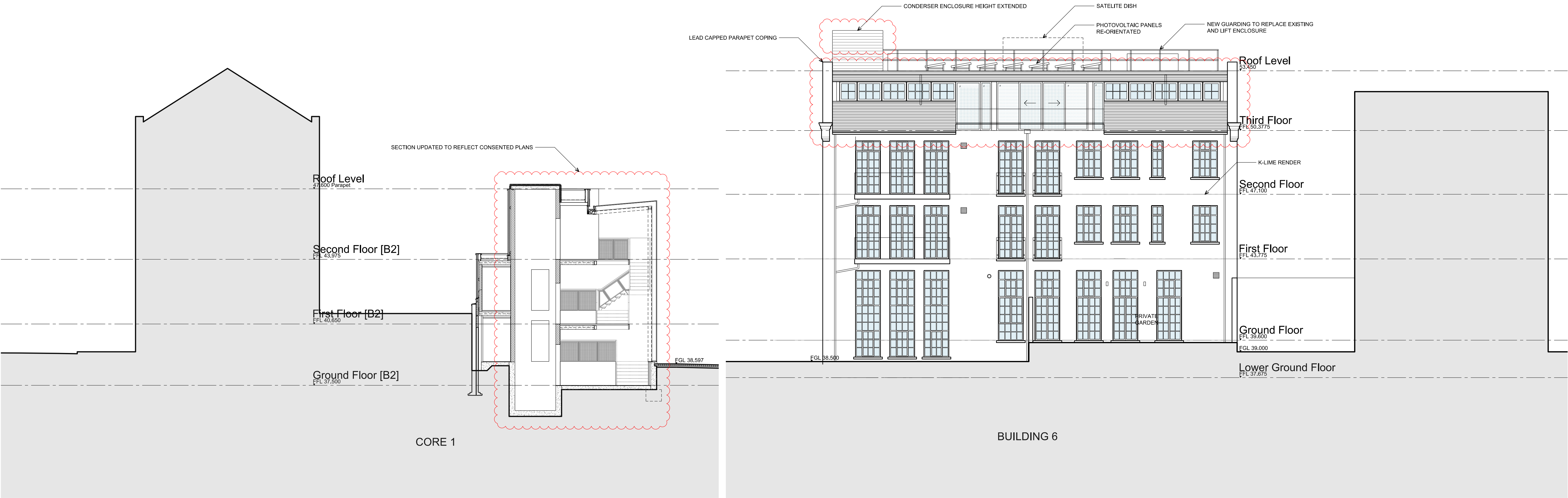


FOR PLANNING APPLICATION PURPOSES ONLY

This drawing has been produced for .Durley Investment Corp., for the project/site named as . Erskine Road . and is submitted as part of a planning application relating to this site name only and is not intended for use by any other person or organisation or for any other purpose.

©PKS Architects LLP

September 2013



DOONE SILVER KERR

THIS DRAWING HAS BEEN DERIVED FROM PKS ARCHITECTS LLP CAD DATA AND
UPDATED SURVEY INFORMATION SUPPLIED BY RGL SURVEYS LTD.

status

PLANNING

PKS
architects

project 6 Erskine Road			
title Proposed Elevation - Leeder House Interior			
scale 1:100 @ A1	author GLJ	dwg no.	rev.
date 11.02.13	job no. 835	050-04	C