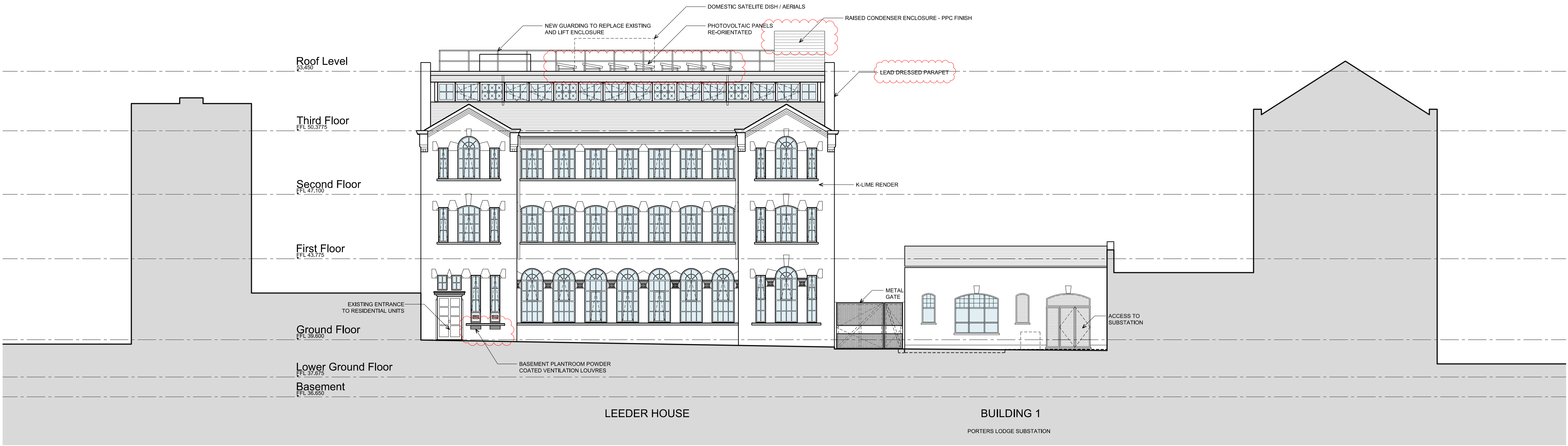


FOR PLANNING APPLICATION PURPOSES ONLY

This drawing has been produced for ,Durley Investment Corp., for the project/site named as , Erskine Road , and is submitted as part of a planning application relating to this site name only and is not intended for use by any other person or organisation or for any other purpose.

©PKS Architects LLP

September 2013



DOONE SILVER KERR

THIS DRAWING HAS BEEN DERIVED FROM PKS ARCHITECTS LLP CAD DATA AND
UPDATED SURVEY INFORMATION SUPPLIED BY RGL SURVEYS LTD.

status

PLANNING

DO NOT SCALE FROM THIS DRAWING ; Verify all dimensions on site

project6 Erskine Road			
titleProposed Elevation - Leeder House External			
scale1:100 @ A1	authorGLJ	dwg no.	rev.
date11.02.13	job no. 835	050-01	E