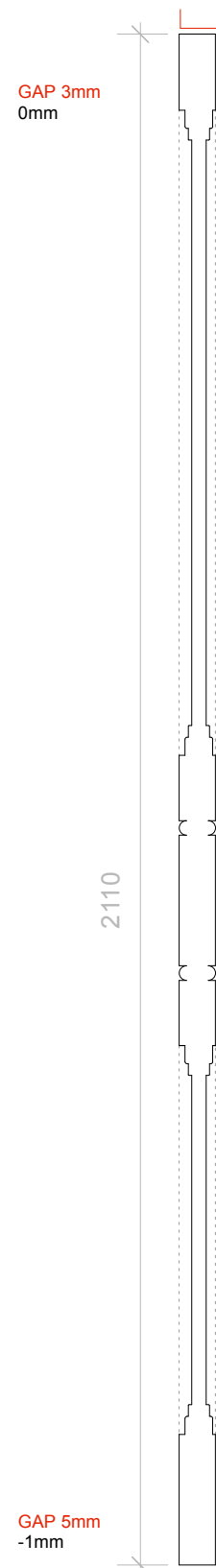


1:10 elevation



1:10 section



NOTES:
rotation anticlockwise with refitting of hinges removes 1mm of the discrepancy

oak additions to door edges as follows:

top: left 0mm - right +12mm
left: no addition
right: no addition
threshold: left +11mm right +13mm

Envirograf ES/SDW oak veneer intumescent/smoke brush seal 1mm veneer thickness to be included in the additional oak edging - seal only applied where 0mm addition is indicated.

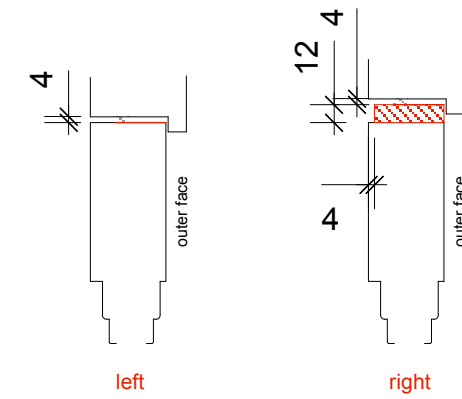
Envirograf intumescent lock seal inserted to both sides of lock case/keep

Excel Hardware 4 Inch 'Fire Rated' Solid Steel Ball Bearing Hinges, Antique Brass - XL869-ANB

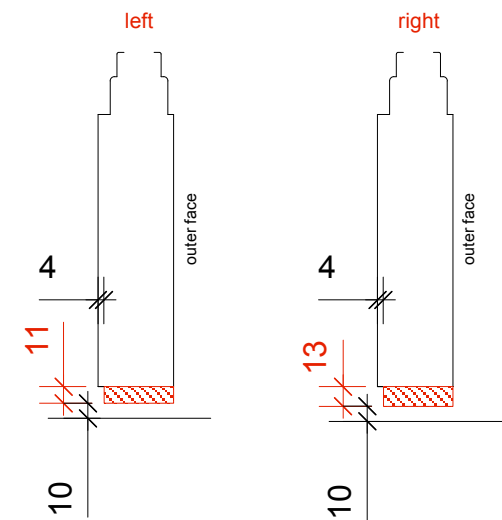
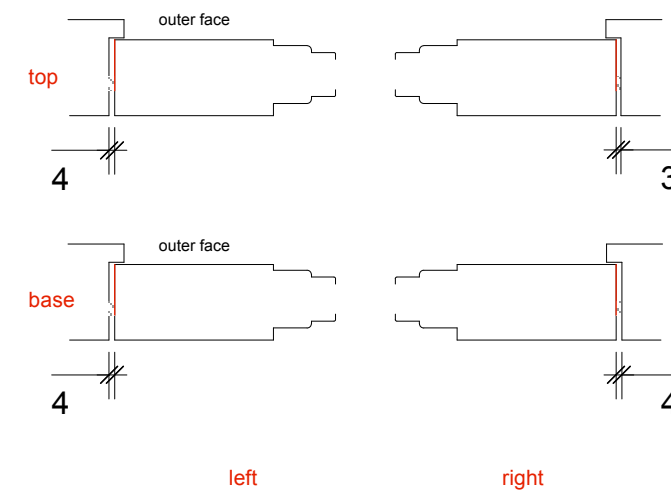
Cover plate to lock case missing - to be replaced with a solid brass plate identical in dimensions + thickness to the cover plate in 'Princes Gate', un-lacquered finish.

Oak edging set back 4mm from inner face to preserve worn/rounded corner from requiring planing and to allow the original outline of the door to remain readable - with the additional edge receding from view from the room. Edging bonded and pinned with brass lost head pins.

detail 1:5- head

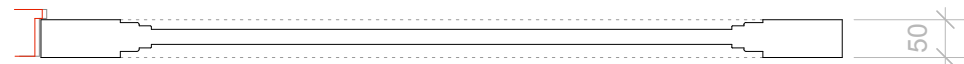


detail 1:5- jambs



detail 1:5- threshold

1:10 plan



notes:

arts lettres techniques ARCHITECT Arts Lettres Techniques Limited 2018 copyright is retained ©

33A ARLINGTON ROAD LONDON NW1 7ES T: (020) 7383 4778 architect@artslettres.com

PROJECT 30 EUSTON SQUARE

SUBJECT ENGLAND Fire door 4 - detail

NUMBER ES FD05

REVISION

SCALE 1:10/1:5 @ A3

DATE 01/03/18

ALL DIMENSIONS MUST BE VERIFIED ON SITE