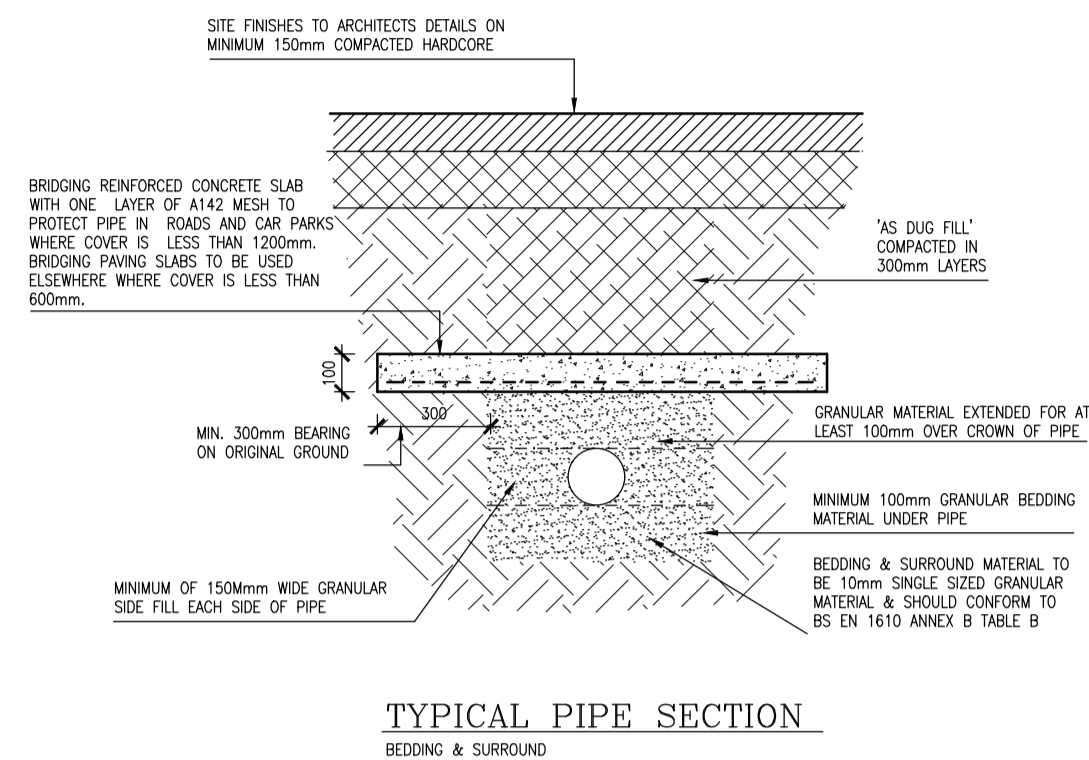
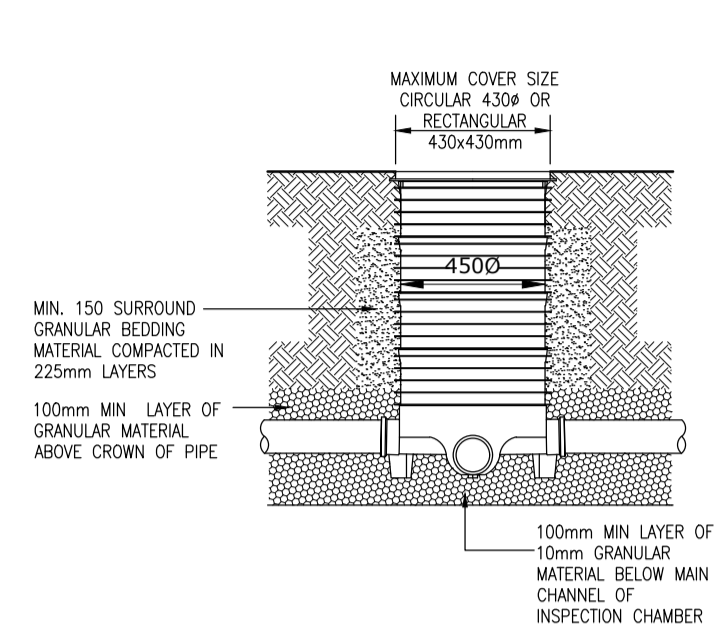


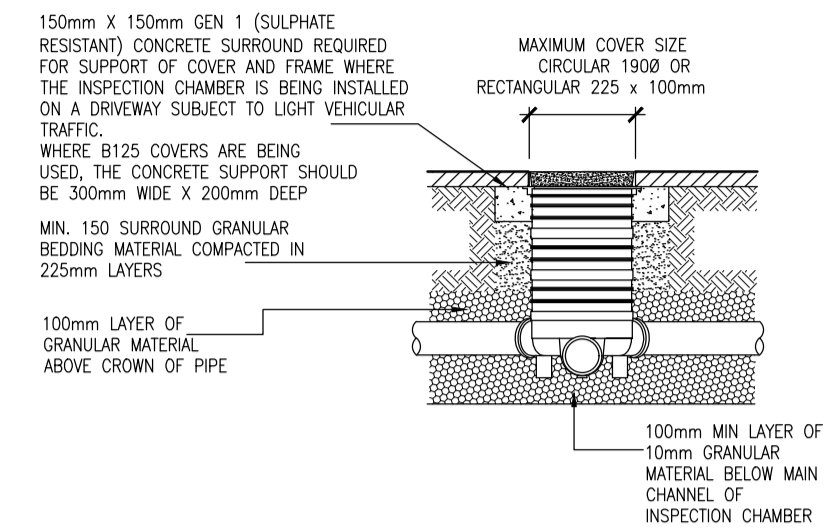
DEEP INSPECTION CHAMBER DETAIL
1.2m - 3.050 (MAX)
FROM COVER TO INVERT FOR USE IN
HARD PAVED (LIGHTLY TRAFFICKED) AREAS



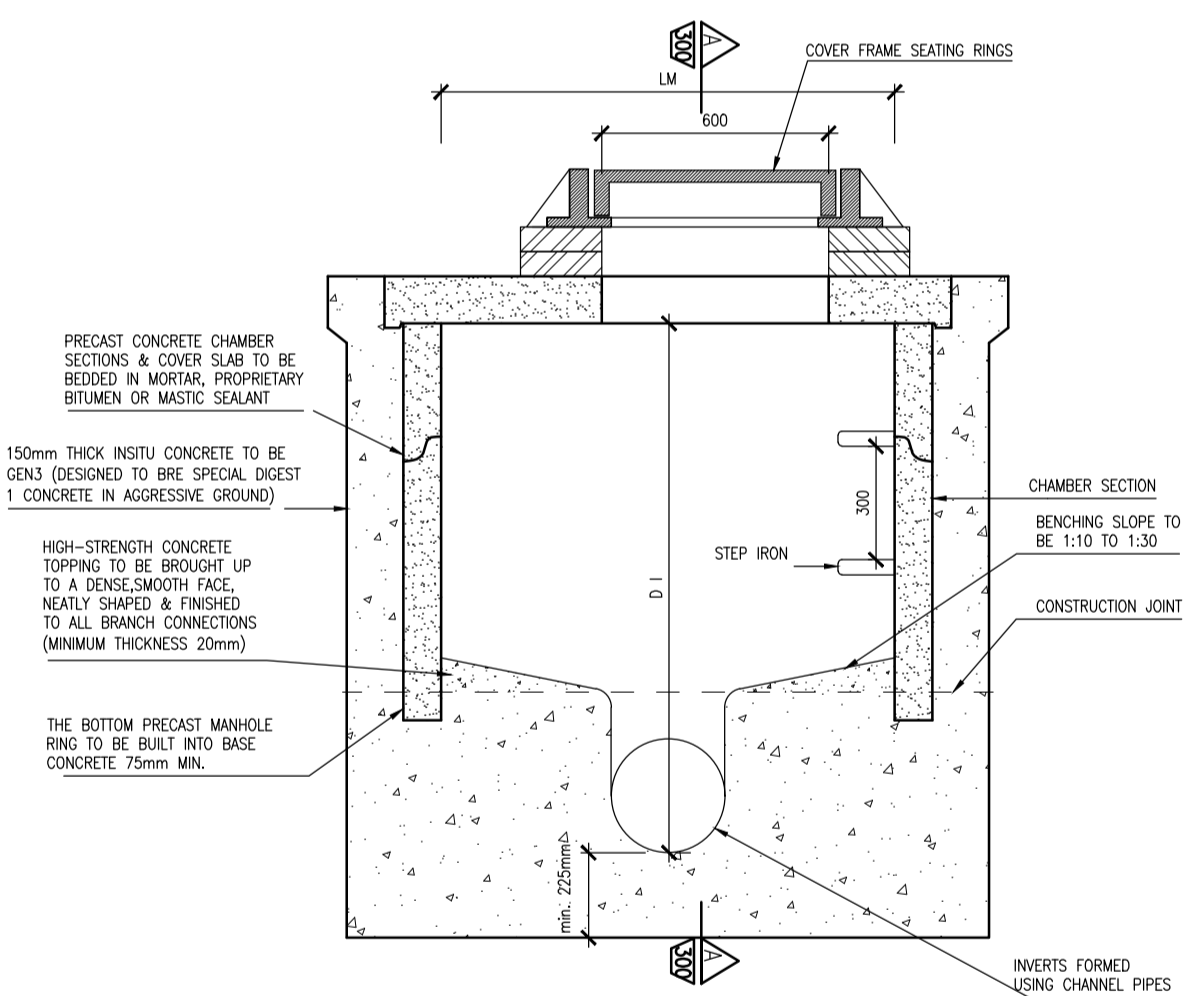
TYPICAL PIPE SECTION
BEDDING & SURROUND



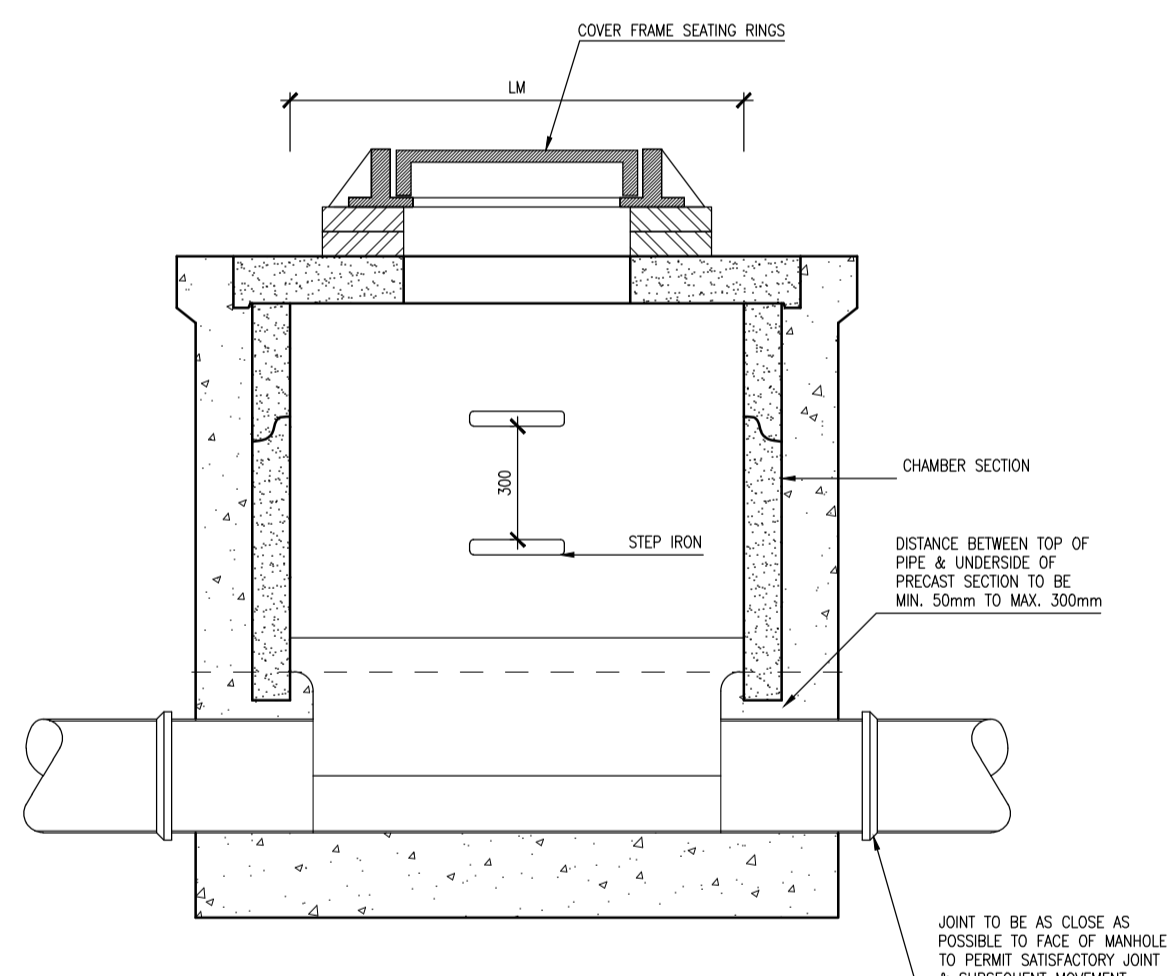
MEDIUM INSPECTION CHAMBER DETAIL 0.6m - 1.2m
FOR LANDSCAPED AREAS



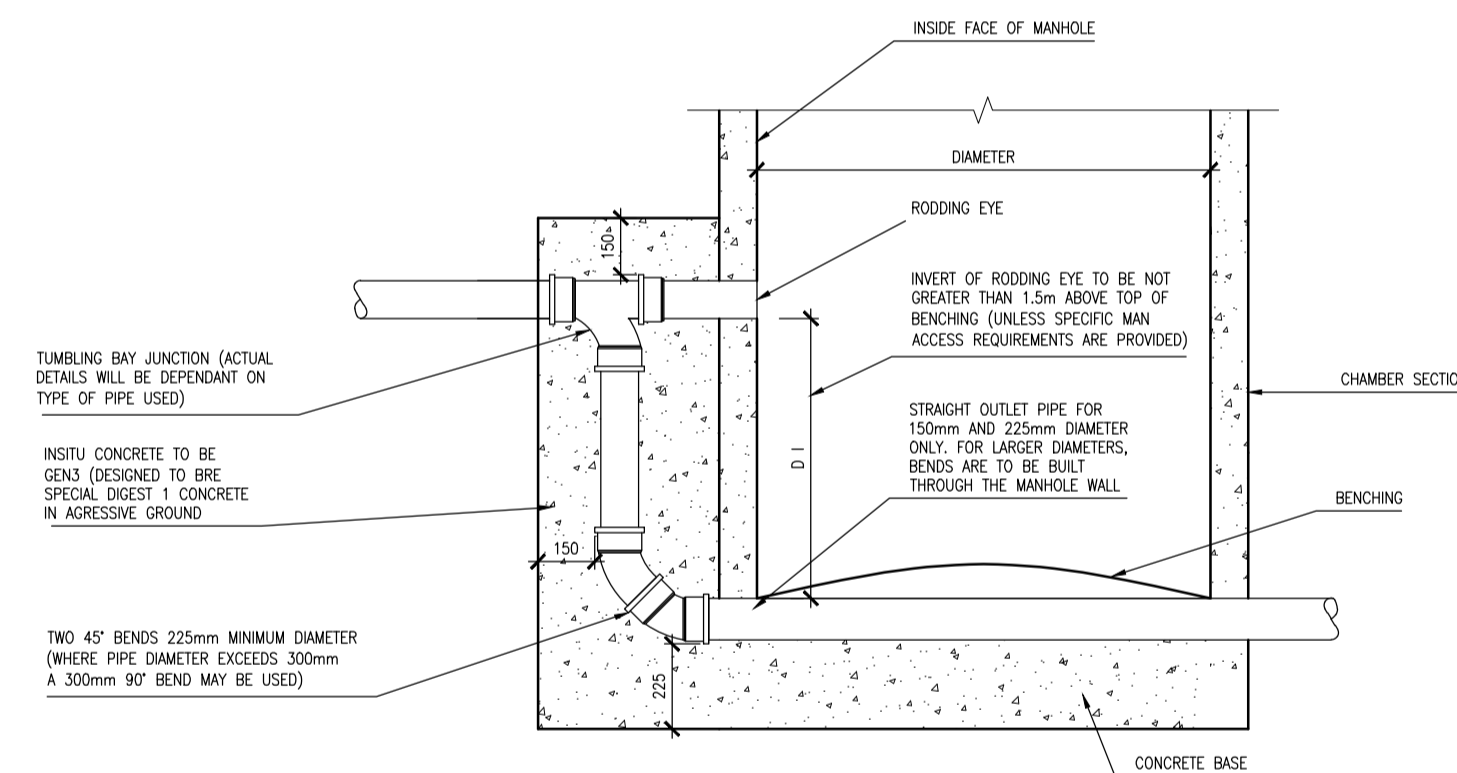
SHALLOW INSPECTION CHAMBER DETAIL FOR USE IN HARD PAVED (LIGHTLY TRAFFICKED) AREAS



TYPICAL SHALLOW MANHOLE



SECTION A-A



TYPICAL EXTERNAL VERTICAL BACKDROP

MINIMUM INTERNAL DIMENSIONS OF MANHOLES PIPE DIAMETER ≤ 300mm			
DEPT TO INVERT (m)	RECTANGULAR LENGTH (m)	RECTANGULAR WIDTH (m)	CIRCULAR DIAMETER (m)
≤ 1.5	1.2	0.75	1.0*
1.5 to 2.7	1.2	0.75	1.2
> 2.7	1.2	0.84	1.2

*MIN. SIZE OF ANY MANHOLE SERVING A SEWER (IE. ANY DRAIN SERVING MORE THAN ONE PROPERTY) SHOULD BE 1200x675mm RECTANGULAR OR 1200mm DIA.

NOTES

GENERAL NOTES :

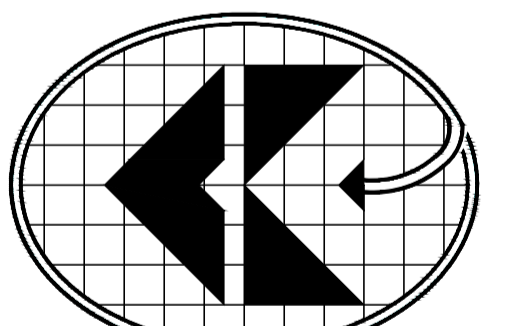
1. ALL COYLE KENNEDY DRAWINGS TO BE READ IN CONJUNCTION WITH ARCHITECTS DRAWINGS AND ALL OTHER RELEVANT DRAWINGS.
2. ALL SETTING OUT, INSULATION, DPC, SCREED AND RADON PROTECTION DETAILS BY ARCHITECT.
3. DETAILED SPECIFICATIONS (IF NOT ISSUED) ARE AVAILABLE AT ENGINEERS OFFICE FOR INSPECTION BY CONTRACTORS, BY APPOINTMENT.
4. DETAILS OF SUBSTRUCTURE GAS/WATER PROOFING MEMBRANES TO BE BY A REPUTABLE, COMPETENT SUPPLIER.
5. ALL SITE DEVELOPMENT WORKS SHOULD COMPLY WITH THE "RECOMMENDATIONS FOR SITE DEVELOPMENT WORKS FOR HOUSING AREAS" PUBLISHED BY THE DEPARTMENT OF THE ENVIRONMENT.
6. THE CONTRACTOR SHALL BE DEEMED TO HAVE ALLOWED FOR, WITHIN HIS TENDER, EMPLOYING A COMPETENT STRUCTURAL ENGINEER WITH ADEQUATE PROFESSIONAL INDEMNITY INSURANCE TO ASSESS, DESIGN AND DETAIL SUCH TEMPORARY WORKS AS ARE NECESSARY TO OBTAIN SUPPORT TO EXISTING AND/OR CONSTRUCTED ELEMENTS DURING THE CONSTRUCTION PERIOD. THIS APPLIES TO ELEMENTS WITHIN THE SITE AND NEIGHBOURING THE SITE.
7. THE CONTRACTOR IS DEEMED TO HAVE VISITED THE SITE AND CONSULTED WITH RELEVANT AUTHORITIES AND BE SATISFIED IN RELATION TO THE SITES SURROUNDINGS, EXISTING SERVICES, LEVELS, BOUNDARIES, GROUND CHARACTERISTICS AND ANY OTHER SITE CONSTRAINTS.
8. ALL WORK TO BE CARRIED OUT IN ACCORDANCE WITH THE CURRENT BUILDING REGULATIONS.
9. WHERE LEANMIX IS SPECIFIED ALL LEANMIX TO BE GRADE GEN 3. UNLESS NOTED OTHERWISE.
10. ALL LEVELS ARE STRUCTURAL LEVELS (U.L.O.)
11. ALL COLUMNS CENTERED ON GRIDS (U.L.O.)
12. DO NOT SCALE FROM DRAWINGS, USE FIGURED DIMENSIONS ONLY

DRAINAGE NOTES :

1. CONTRACTOR TO MAKE ALL NECESSARY ENQUIRIES REGARDING LOCATION OF EXISTING SEWERS, ELECTRICAL AND OTHER SERVICES ON SITE.
2. ALL DRAINAGE WORK TO BE CARRIED OUT IN ACCORDANCE WITH PART H BUILDING REGULATIONS AND WHERE RELEVANT 'SEWERS FOR ADOPTION' 6th EDITION A DESIGN & CONSTRUCTION GUIDE FOR DEVELOPERS.
3. BEDDING MATERIAL TO BE 10mm SINGLE SIZED AGGREGATE COMPLYING WITH THE REQUIREMENTS OF 'AGGREGATES FOR CONCRETE'. FOR RIGID PIPES THE GRANULAR MATERIAL SHOULD CONFORM TO BS EN 1610 ANNEX B TABLE B AND SHOULD BE SINGLE SIZE MATERIAL OR GRADED MATERIAL FROM 5mm TO 10mm FOR 100mm PIPES; 14mm FOR 150mm PIPES; 20mm FOR 150mm - 600mm DIAMETER AND 40mm FOR PIPES MORE THAN 600mm DIAMETER.
4. THE PREPARED UNDERFILL OF THE TRENCH SHOULD CONSIST OF BEDDING MATERIAL FOR THE FULL WIDTH OF THE TRENCH AND LAD TO THE CORRECT GRADIENT. COMPACTION FRACTION MAXIMUM 0.3 FOR CLASS 4 OR B AND 0.15 FOR CLASS F.
5. THE MINIMUM THICKNESS OF BEDDING MATERIAL UNDER THE BARREL OF THE PIPE SHOULD BE 100mm.
6. IMPORTED BEDDING MATERIAL AND BACKFILL USING 'AS DUG MATERIAL' MUST BE APPROVED BY ENGINEER. BACKFILL WITH SELECTED OR GRANULAR FILL FREE FROM STONES LARGER THAN 40mm.
7. ALL PVC-U PIPES AND FITTINGS USED FOR DRAIN AND SEWER MUST COMPLY WITH BS EN1401.
8. ALL EXTERNAL DRAINAGE PIPES TO BE CLAYWARE TO BS EN 295 AND BS EN 65.
9. EXACT LOCATIONS OF DOWNPIPES FROM ABOVE SLAB ARE TO BE CONFIRMED BY ARCHITECT AND MEP ENGINEER.
10. INVERT LEVELS OF CONNECTIONS TO PUBLIC SEWER ARE INDICATIVE ONLY AND TO BE CONFIRMED BY CONTRACTOR ON SITE PRIOR TO CONNECTION.
11. CONTRACTOR TO CHECK LEVELS AND CONDITION OF ALL DRAINAGE OUTFALLS/NETWORKS PRIOR TO CONSTRUCTION TO ENSURE THE PROPOSED DESIGN CAN BE ACHIEVED, AND ERRORS/DISCREPANCIES MUST BE REPORTED.
12. THAMES WATER APPROVAL IS STILL AWAITED AND THIS FINAL CONNECTION DETAILS AND LAYOUTS ARE TO BE CONFIRMED.
13. CONTRACTOR TO FORMALLY ISSUE S106 APPLICATION FOR SEWER CONNECTION PRIOR TO CONSTRUCTION OF OUTFALL PIPE.
14. DRAINAGE LAYOUT SUBJECT TO APPROVAL FROM RELEVANT APPROVING BODIES.
15. CONTRACTOR TO CONFIRM AND COORDINATE ANY REQUIRED SERVICES DIMENSIONS WITH THE STATUTORY UNDERTAKERS PRIOR TO CONSTRUCTION.

F ₀ - 8/1		
Rev.	Revision	Date

DRAWING STATUS		
P PRELIMINARY	A APPROVAL	T TENDER
C CONSTRUCTION	R RECORD	I INFORMATION



COYLE KENNEDY
Consulting Engineers

GFSC,
Moneenageisha Rd,
Galway.

Tel: +353 (0)91 752000
Fax: +353 (0)91 753000

Website: www.coylekennedy.com
email: mail@coylekennedy.com

PROJECT BELSIZE PARK

CLIENT VULCAN PROPERTIES Ltd.

TITLE TYPICAL DRAINAGE DETAILS

PROJECT No.	17-172	STATUS - DRAWING No.	P-301
DATE	MARCH 2018	DRAWING REV.	-
SCALE	1:20, 1:50 @ A1 1:40, 1:100 @ A3	BY	AC
		CHECKED	SP