

**Project:** Q&R zones, Kings Cross Central

**Document title:** **Additional Information submission  
Building R5 (South)**

**Prep by:** Claire Walsh (Applied Landscape Design Ltd)  
On behalf of Argent (Kings Cross) Ltd.

**Issue date:** 20/03/2018

**Application reference:** 2013/1573/P  
2017/4048/P (information submitted to discharge reserved matter conditions)



**King's Cross**

Additional information submission to support previously submitted information under application 2017/4048/P

<b>CONDITION</b>	<b>DETAILS OF CONDITION</b> (under application 2013/1573/P)	<b>NOTES</b>
5	Prior to commencement on the relevant part of the development hereby approved details of all external lighting to include location, design, specification, fittings and fixtures (including means of reducing light spillage) shall be submitted to and approved in writing by the local planning authority. Thereafter, the relevant part of the works shall not be carried out otherwise in accordance with the details thus approved.	Refer to enclosed additional lighting information to support previously submitted information (application 2017/4048/P)

# DATA SHEET:

## GU10SPIKE, GU10SPIKEL, GU10SPIKEBK

nights  
the mark of quality

ISSUE: ABSEP16V01

### IP65 GU10 SPIKE FITTING

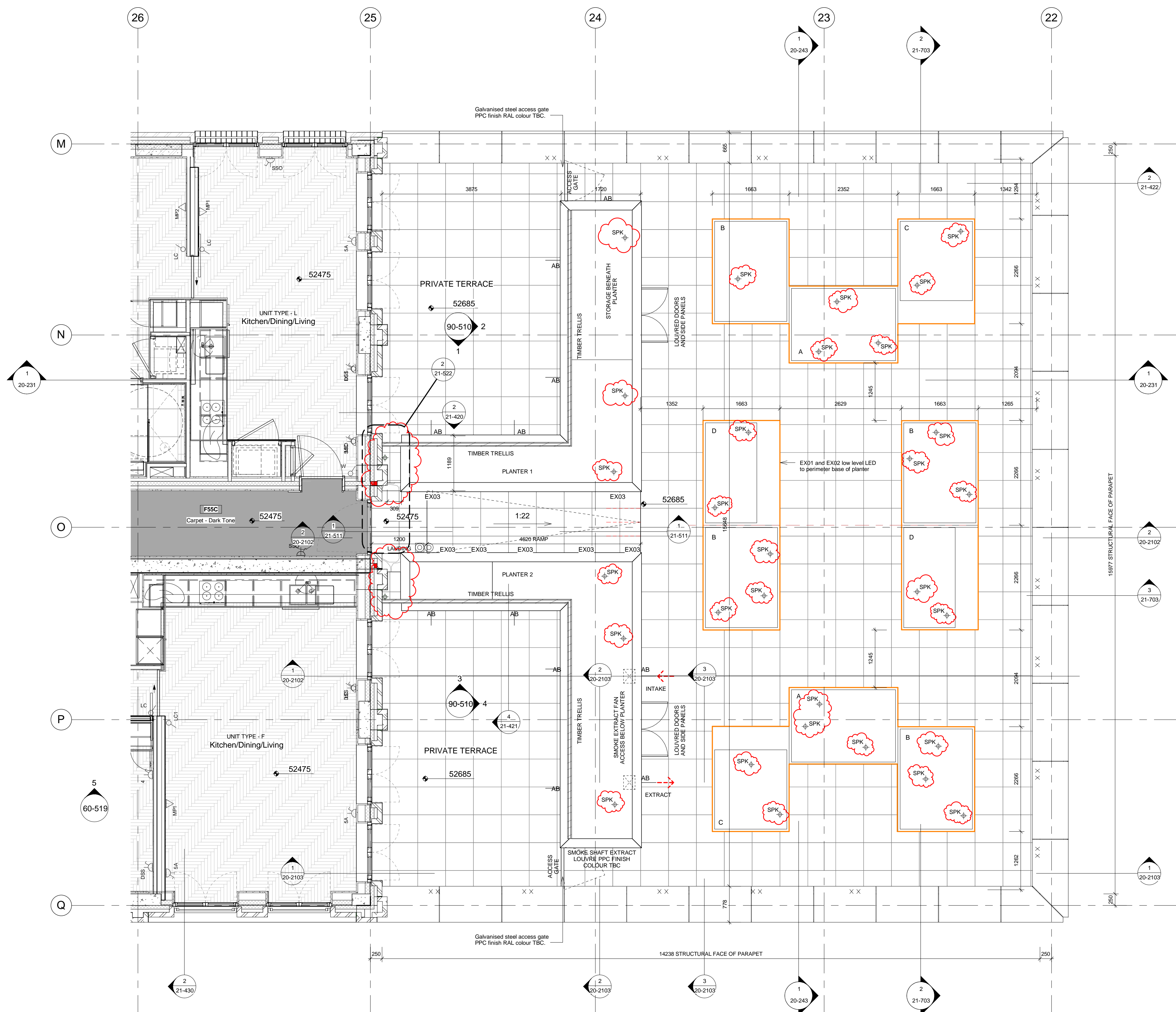


MLA part code	GU10SPIKE	<del>GU10SPIKEL</del>	<del>GU10SPIKEBK</del>
Description	IP65 GU10 SPIKE FITTING		
Weight (kg)	0.51	<del>0.47</del>	<del>0.51</del>
Max Wattage (W)	35		
Overall dimensions (mm)	Diameter - 62.5 Length - 250	<del>Diameter - 60 Length - 250</del>	<del>Diameter - 63.5 Length - 250</del>
Input voltage	Mains 230V 50Hz		
Construction	304 Stainless Steel	<del>304 Stainless Steel</del>	<del>Die cast aluminium</del>
Finish	Stainless steel		<del>Black</del>
Class	Class I		
IP rating	IP65		
Cable length (mm)	3000	<del>2000</del>	<del>3000</del>
Cable type	H05RH-F		
Warranty	1 Year		
Dimmable	Dependant on lamp		
Instruction sheet	Yes		
Origin of Manufacture	China		
Quality assurance system	ISO9001		
Declaration of Conformity (held on file)	Yes		
Manufactured & accordance with	EN60598		
EAN	5055559102496	<del>5055559186601</del>	<del>5055559129240</del>

LAMP SPECIFICATION (L.E.D.)

PARATHOM PAR16 GU10 - 5 WATTS, 350 LUMENS, 3000K temp (warm white) 36 degree beam.  
(OSRAM)



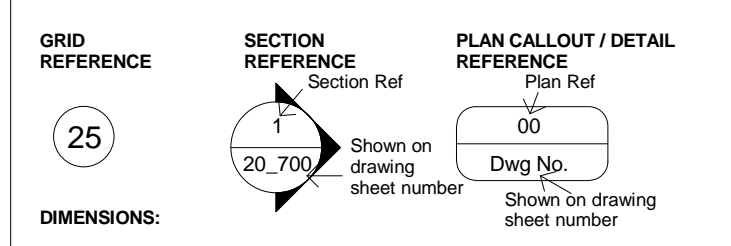


**notes**

The contractor is responsible for checking dimensions, tolerances and references.  
 Any discrepancy to be verified with the Architect before proceeding with the works.  
 Where an item is covered by drawings to different scales the larger scale drawing is to be worked to.  
 Do not scale drawing. Figured dimensions to be worked to in all cases.

**CDM Regulations 2015**

All current drawings and specifications for the project must be read in conjunction with the Designer's Hazard and Environment Assessment Record.



**DIMENSIONS:**

1430 Dimensions to face of finish.

1430 Dimensions to structural opening.

1430 Dimensions to finished face unless noted otherwise.

**DIMENSIONS ANNOTATED WITH AN 'A' ARE CRITICAL DIMENSIONS.**

**PREFABRICATED COMPONENT REFERENCING:**

Type	Prefixes	Refer to Drawing Series
I.D.	I-Internal door	32-500
W-Ext Window/Door	W-Ext Window/Door	31-700
BR-Bathroom	BR-Bathroom	74-500
KT-Kitchen	KT-Kitchen	73-500
WT-Wardrobe	WT-Wardrobe	Refer to Johnson Naylor drawing series
		KXC-KR6-001-JN18571-80-500

**WALL TYPE SYMBOLS:**

Wall type prefixes:  
 eW Prefix indicates an external wall type  
 IW Prefix indicates an internal wall type  
 IF Prefix indicates paneling or feature sling applied to wall.

**LEGEND**

+ SVP	Soil vent pipe with offset	□	Service opening over door
+ SVP	Soil vent pipe	□	Door width (w) x 300mm (h) from underside of slab
+ SS	Sub stack	● (XXXXXX)	Specification reference. Refer to Specification Legend and NSS doc.
+ VP	Vent pipe	[IMB]	Electricity Meter Box
+ RWP	Rainwater pipe with offset over	[WHV]	WHV Whole house vent.
+ RWP	Rainwater pipe	ED	Extract vent duct
+ BRWO	Rainwater Outlet below Balcony Decking	---	Wall pressing refer to drawing 20-518 for typical elevations
AB	Air Brick	AP	Riser Access Panel

**COMMUNAL FLOOR TYPES LEGEND**

[Pattern]	PVC sheet flooring SPEC M50/156	[Pattern]	Entrance Barrier matting JN SPEC F52C
[Pattern]	Platroom coating SPEC M60/196	[Pattern]	Parcelain Tiles 750x750 JN SPEC F51C
[Pattern]	Fastcoat anti-slip SPEC M60/181	[Pattern]	Natural Stone JN SPEC F50C
[Pattern]	Carpet flooring Light grey tone JN SPEC F54C	[Pattern]	Carpet flooring Dark grey tone JN SPEC F55C
[Pattern]	Woven vinyl JN SPEC F53C		

**COMMUNAL CEILING TYPES LEGEND**

[Pattern]	C01 Plasterboard 15mm Knauf MR Wallboard	[Pattern]	C02 Plasterboard 15mm Knauf MR Wallboard
[Pattern]	C03 Acoustic Ceiling 300x300mm ceiling panels		

**CEILING FIXTURES**

[Symbol]	FCU Fancoil Unit	[Symbol]	L1.ac Single recessed trimless LED downlight
[Symbol]	FCU ACCESS Ceiling access panel for Fancoil Unit 600 x 600	[Symbol]	L2.ac Single recessed trimmed LED downlight
[Symbol]	SD Smoke Detector	[Symbol]	L3.ac Surface mounted twin LED fitting
[Symbol]	PM Ceiling mounted motion sensor	[Symbol]	L4.ac Feature pendant light with patressing in ceiling
[Symbol]	HD Heat detector	[Symbol]	L5.ac LED surface mounted lighting strip
[Symbol]	CCTV Ceiling mounted security camera	[Symbol]	L6.ac LED recessed lighting strip
[Symbol]	EXIT Illuminated emergency exit sign	[Symbol]	L7.acw Single recessed LED spotlight in white
[Symbol]	Horizontal linear slot diffuser grilles for FCU supply and return air	[Symbol]	L7.acb Single recessed LED spotlight in black
[Symbol]	Surface mounted light to storage cupboards with internal PIR.	[Symbol]	L8.ac LED light panel for wayfinding signage
		[Symbol]	EM Emergency lighting to M&E spec
		[Symbol]	SPK Spike lighting to Landscaping spec
		[Symbol]	ULP Uplighters to Landscaping spec

date	rev	revision/author/checker
03.10.2017	7	General amendments A/JH A/JH
03.06.2017	6	Issued for construction A/JH A/JH
02.12.2016	5	Issued for Status Assign A/JH A/JH
09.07.2015	00	First Issue AOH/AH

purpose of issue  
**FOR CONSTRUCTION**

project  
**KINGS CROSS R6**

drawing  
**Level 8 Partial Plan - Communal Terrace**

drawing no	rev
KXC-R6-001-A-5145C-20-1083-	07

drawn	checked	scale @ A1	date
IM	MSB	1 : 50	06/23/15

**carillion**

For information

For comment

For client sanction

For construction

This drawing has been reviewed against the contractor's risk register and notes added to fully describe all residual risks.

Confirmed by: \_\_\_\_\_

PRP Architects ©  
 10 Lindsey Street  
 Smithfield  
 London EC1A 9HP  
 T +44 (0)20 7653 1200  
 F +44 (0)20 7653 1201  
 lon.prp@prparchitects.co.uk