

Q&R Zone

KINGS CROSS CENTRAL

Applied Landscape Design

Tracker to Discharge:

Reserved matter condition 4
Building R3 and Zone R Gardens
Kings Cross Central 2015/4819/P

ALD Project Ref: 766 / 16

Document Ref: ALD766_RP903

Document Revision: P02

Current Issue Date: 20.03.2018

ALD working date: 02.11.2017

Reason For Issue: Approval

Prepared By: Applied Landscape Design Ltd
Landscape Architect

Client: Argents (Kings Cross) Ltd.

King's Cross




INTRODUCTION

This document has been prepared to discharge the following planning conditions as highlighted below:
Under application 2015/4819/P, Building R3 and Zone R Gardens, Kings Cross Central

CONDITION	DETAILS OF CONDITION	NOTES
4	<i>Prior to commencement on the relevant part of the development hereby approved full details of the central steps and associated handrails in Zone R Gardens shall be submitted to the Local Planning Authority and approved in writing. The details shall demonstrate how these features incorporate inclusive access'</i>	<p>To incorporate inclusive access, the garden design has provided alternative step free access routes into Jellicoe Gardens and to the water feature (between planters 01 & 02, 02 & 04 and 04 & 06). The steps ensure a level plateau is achieved both adjacent to R3 building for access, and within the gardens.</p> <p>Refer to plan layout ALD766P_HL191 for step locations and alternative step free routes.</p> <p>Refer to details within this document and the appendices for step / handrail materials & specific step details..</p>



Material REF.	Material Details	Location	Detail drawing number	Supplier	Photo	Location example
JELlicOE GARDEN STEPS						
1	<p><u>Sandstone Steps:</u> Solid Scoutmoor step units with diamond sawn finish & integrated nosing. Dimensions vary, refer to drawings listed for further information.</p> <p><u>Step Nosing:</u> 50mm wide x 50mm deep China Black Granite Nosings</p> <p><u>Tactile Units:</u> Scoutmoor Sandstone Corduroy paving Dimensions vary, refer to drawings listed for further information.</p>	<p>Between Planters 01 & 03</p> <p>Between Planters 03 & 05</p> <p>Between Planters 05 & 06</p>	<p>LD750 - LD753</p> <p>LD755 - LD757</p> <p>LD758 - LD760</p>	Miller Druck	 <p>Image above representative of materials only, layout and sizes differ. Refer to details for further information</p>	P1 west steps
2	<p><u>Handrails:</u> 50mm diameter stainless steel handrail with bead blasted finish.</p> <p>To include handrail lighting.</p>	<p>Between Planters 01 & 03</p> <p>Between Planters 03 & 05</p> <p>Between Planters 05 & 06</p>	<p>LD750 - LD753</p> <p>LD755 - LD757</p> <p>LD758 - LD760</p>	tbc		P1 west steps

APPENDIX A: TYPICAL DETAILS - Steps between Planters 01 & 03



2no. Steps with 165mm riser

All dimensions to be verified on site. Figure dimensions to take precedence to those scales. Any errors indicated on this drawing are for guidance only, no responsibility is taken for their accuracy.

This drawing is the property of Applied Landscape Design Limited. Copyright is reserved by them and the drawing is issued on the condition that it is not copied, reproduced, retained or checked to any unauthorised person, either wholly or in part without the written consent in writing of Applied Landscapes.

© 2017 Applied Landscape Design Limited. All rights reserved.

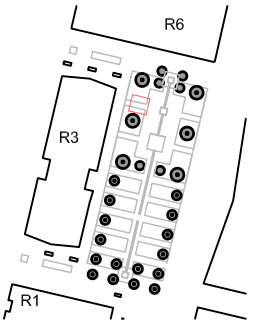
CDM/H&S:

The works illustrated on this drawing have been reviewed against the Design CDM Risk Register and significant risks are noted as:

- Construction:
- Handling heavy materials
 - Working at height
 - Working adjacent to existing structures and buildings

- Maintenance:
- Light bulb changing
 - Working at height (see maintenance)

NOTES / KEY:



REFERENCE DRAWINGS/DOCUMENTS

		STEP RILL CHANNEL AXONOMETRIC
LD755 - LD757	JELLICOE GARDENS: STEP DETAILS BETWEEN PLANTER 01 & 03	

REVISIONS		

C02	Client details amended and drawing updated for planning resubmission	19.03.18
C01	Updated following TLA comments, first issue for construction	11.10.17
P01	First issue for review / comment	18.08.17

no.	issued	date
-----	--------	------

CLIENT:

King's Cross

LANDSCAPE ARCHITECT:

The Threshing Barn
Bignell Park Barns
Chesham, Nr. Bicester
Oxfordshire, OX26 1TD

Tel: 01869 249776
Email: mail@appliedlandscape.co.uk



PROJECT:

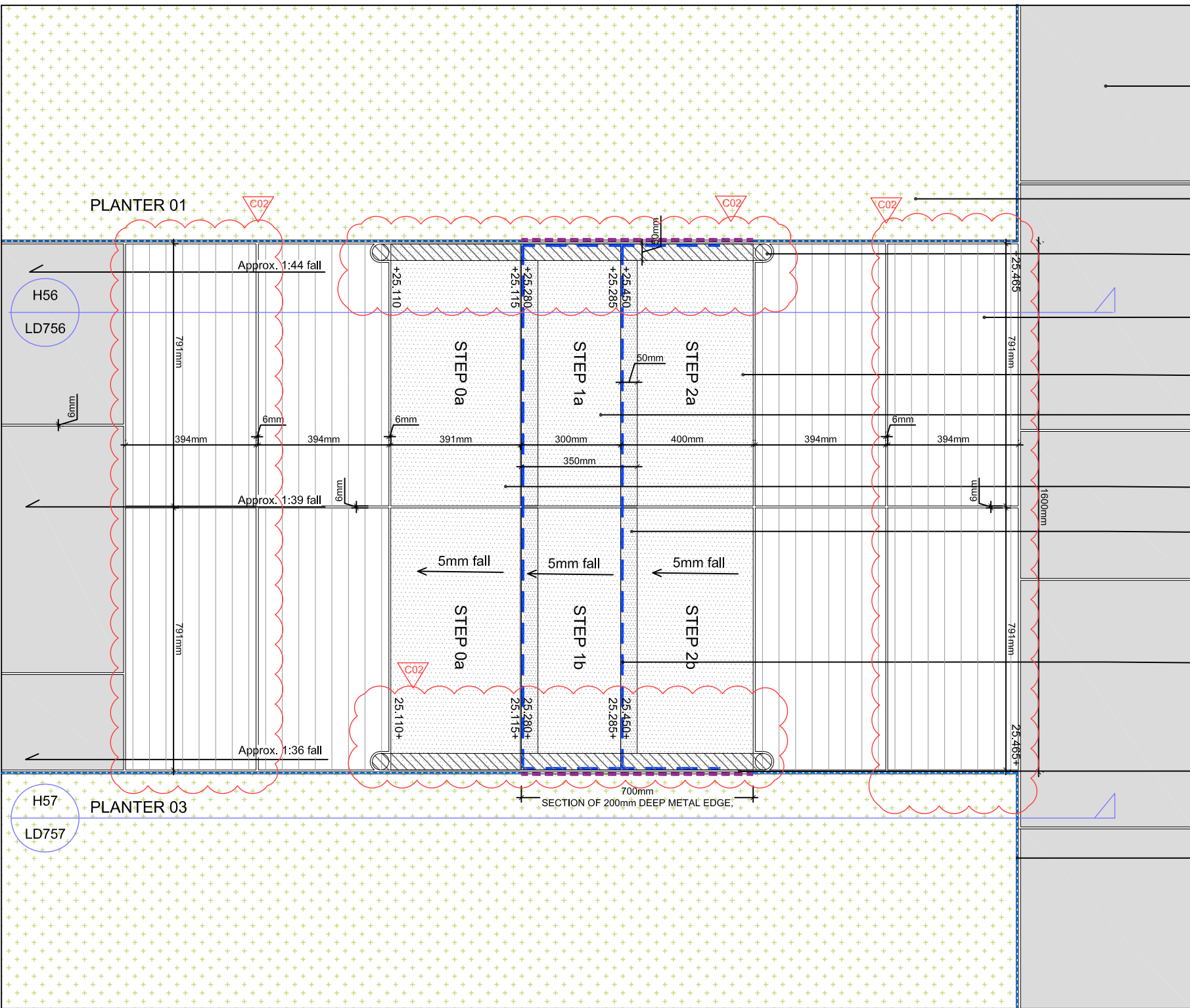
**Q & R ZONES
KINGS CROSS CENTRAL**

DRAWING TITLE:

**JELLICOE GARDENS: STEP DETAILS
BETWEEN PLANTERS 01 & 03
DETAIL PLAN LAYOUT**

drawn; CW	scale; 1:15 @ A3	
checked; KmJ	status; Construction	
date; 28.04.2017	xref file ref; ALD766_LDbase	
PROJECT NO. ALD766	DRAWING NUMBER; LD755	REVISION; C02

ORIGINAL A3 SIZE SHEET



SCOUTMOOR SANDSTONE PAVING (TYPE 3) - DIAMOND SAWN FINISH
ROW A: 644/744/944mm LENGTH x 744 WIDTH x 50mm DEEP
ROW B: 644/744/944mm LENGTH x 644 WIDTH x 50mm DEEP
ROW C: 544/744/844mm LENGTH x 544 WIDTH x 50mm DEEP
ROW D: 444/544/644mm LENGTH x 444 WIDTH x 50mm DEEP
BY MILLER DRUCK OR EQUAL AND APPROVED.
REFER TO DRAWING ALD766_LD723

SOFT LANDSCAPING TO TOM STUART-SMITH DRAWINGS AND SPECIFICATIONS

50mm DIAMETER STAINLESS STEEL HANDRAIL BEAD BLASTED FINISH. HANDRAIL TO INCLUDE LIGHTING, DETAILS TO BE DEVELOPED BY SPECIALIST FABRICATOR

SCOUTMOOR SANDSTONE CORDUROY PAVING:
791mm LONG x 394mm WIDE x 50mm DEEP BY MILLER DRUCK OR EQUAL AND APPROVED

SCOUTMOOR SOLID STEP UNIT 2:
791mm LONG X 400mm WIDE X 159mm DEEP WITH DIAMOND SAWN FINISH & INTEGRATE NOSING

SCOUTMOOR SOLID STEP UNIT 1:
791mm LONG X 350mm WIDE X 204mm DEEP WITH DIAMOND SAWN FINISH & INTEGRATED NOSING

SCOUTMOOR STEP TREAD UNIT 0:
791mm LONG X 391mm WIDE X 50mm DEEP WITH DIAMOND SAWN FINISH

STEP NOSING:
741mm LONG X 50mm WIDE X 50mm DEEP CHINA BLACK GRANITE NOSING BY MILLER DRUCK OR EQUAL AND APPROVED. NOSING TO TERMINATE 50mm BEFORE EXPOSED STEP UNIT FACES.

BLUE DASHED LINE DENOTES EXPOSED STEP UNIT FACES WHICH REQUIRE:
- DIAMOND SAWN FINISH
- 5mm ARIS TO ALL EXPOSED EDGES / CORNERS TO STEP UNITS

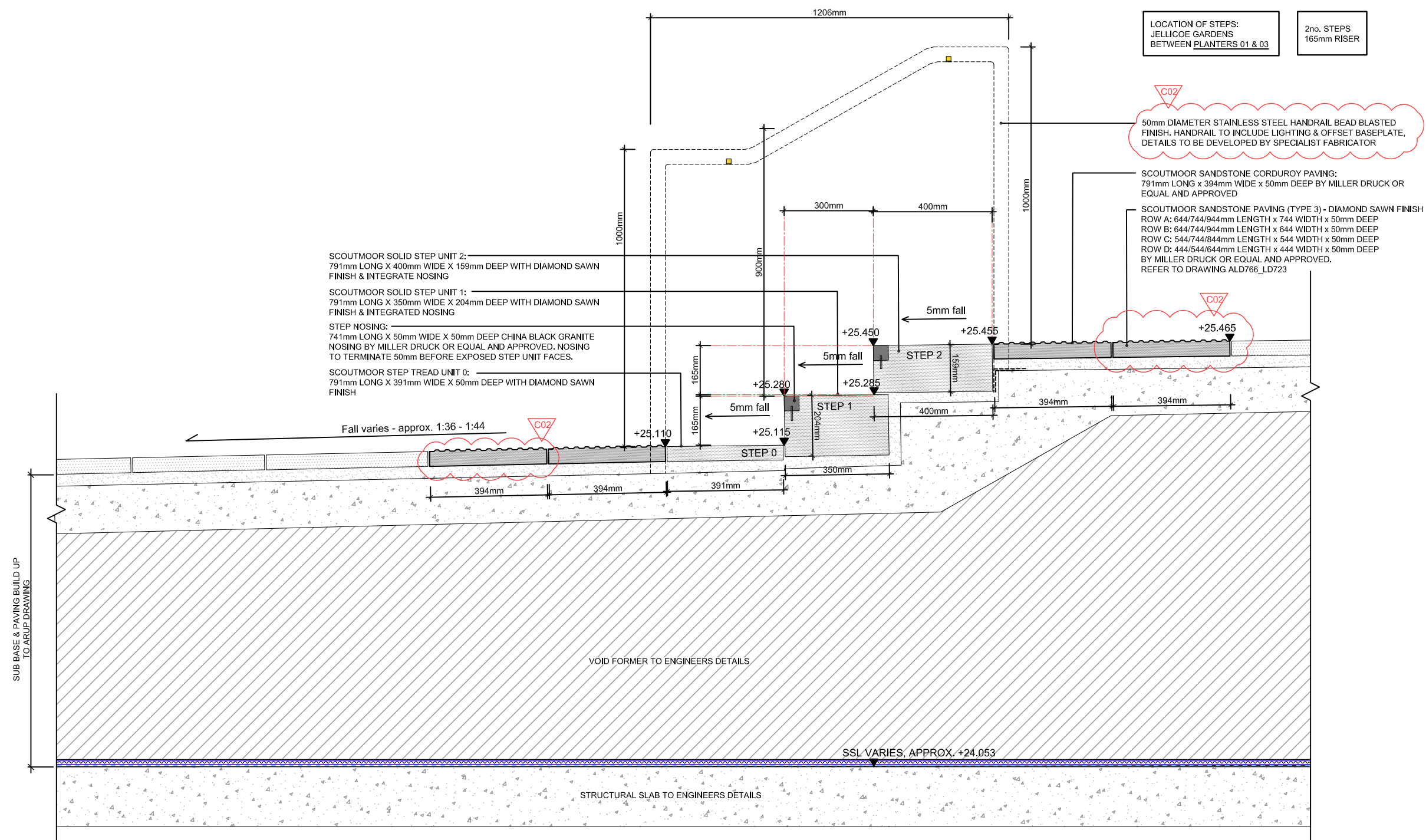
6mm WIDE SLOPED STAINLESS STEEL PLATE (200mm DEEP) FIXED BACK INTO STEP FOUNDATIONS

6mm WIDE FLUSH STAINLESS STEEL ANGLE (90mm DEEP) FIXED WITH METAL PINS
REFER TO DRAWING ALD766_LD713

LOCATION OF STEPS:
JELLICOE GARDENS
BETWEEN PLANTERS 01 & 03

2no. STEPS
165mm RISER

DETAIL H55 - PLAN LAYOUT SHOWING STEPS BETWEEN PLANTERS 1 & 3
SCALE 1:15 @ A3



DETAIL H56 - SECTION THROUGH SOLID STEP UNITS SHOWING HANDRAIL BETWEEN PLANTERS 01 & 03
SCALE 1:15 @ A3

All drawings to be written on site. Flipped drawings to take precedence to those created. Any and all provisions on this drawing are for guidance only, no responsibility for their accuracy.

The drawing is the property of Applied Landscape Design Limited. Copyright is reserved by them and the drawing is issued on the condition that it is not copied, reproduced, reprinted or disclosed to any unauthorised person, either wholly or in part without the written consent in writing of Applied Landscapes.

© 2017 Applied Landscape Design Limited. All rights reserved.

CDM/H&S:

The works illustrated on this drawing have been reviewed against the Design CDM Risk Register and significant risks are noted as:

Construction:

- Handling heavy materials
- Working at height
- Working adjacent to existing structures and buildings

Maintenance:

- Light bulb changing
- Working at height (see maintenance)

REFERENCE DRAWINGS/DOCUMENTS		
LD955 - LD957	JELLI/COE GARDENS; STEP DETAILS BETWEEN PLANTER 01 & 03	
REVISIONS		
C02	Client details amended and drawing updated for planning resubmission	19.03.18
C01	Updated following TLA comments, first issue for construction	11.10.17
P01	First issue for review / comment	18.08.17
no.	issued	date

CLIENT:

King's Cross

PROJECT:

Q & R ZONES

KINGS CROSS CENTRAL

drawn: CW	scale: 1:15 @ A3	
checked: KmJ	status: Construction	
date: 28.04.2017	xref file ref: ALD766_LDbase	
PROJECT NO. ALD766	DRAWING NUMBER: LD756	REVISION: C02



2no. STEPS
165mm RISER

— BUILDUPS AND FOUNDATIONS TO ENGINEERS
DETAILS

PROJECT NO. ALD766	DRAWING NUMBER: LD757	REVISION: C02
-----------------------	--------------------------	------------------

APPENDIX B: TYPICAL DETAILS - Steps between Planters 03 & 05



3no. Steps with 165mm riser

© 2017 Applied Landscape Design Limited. All rights reserved.

CDM/H&S:

The works illustrated on this drawing have been reviewed against the Design CDM Risk Register and significant risks are noted as:

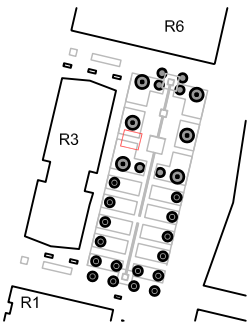
Construction:

- Handling heavy materials
- Working at height
- Working adjacent to existing structures and buildings

Maintenance:

- Light bulb changing
- Working at height (tree maintenance)

NOTES / KEY:



REFERENCE DRAWINGS/DOCUMENTS

LD758 - LD760	JELlicoe GARDENS: STEP DETAILS BETWEEN PLANTER 03 & 05	

REVISIONS

C02	Client details amended and drawing updated for planning resubmission	19.03.18
C01	Updated following TLA comments, first issue for construction	11.10.17
P01	First issue for review / comment	18.08.17

no.	issued	date
-----	--------	------

CLIENT:

King's Cross

LANDSCAPE ARCHITECT:

The Threshing Barn
Bignell Park Barns
Chesham, Nr. Bicester
Oxfordshire, OX26 1TD

Tel: 01869 249776
Email: mail@appliedlandscape.co.uk



PROJECT:

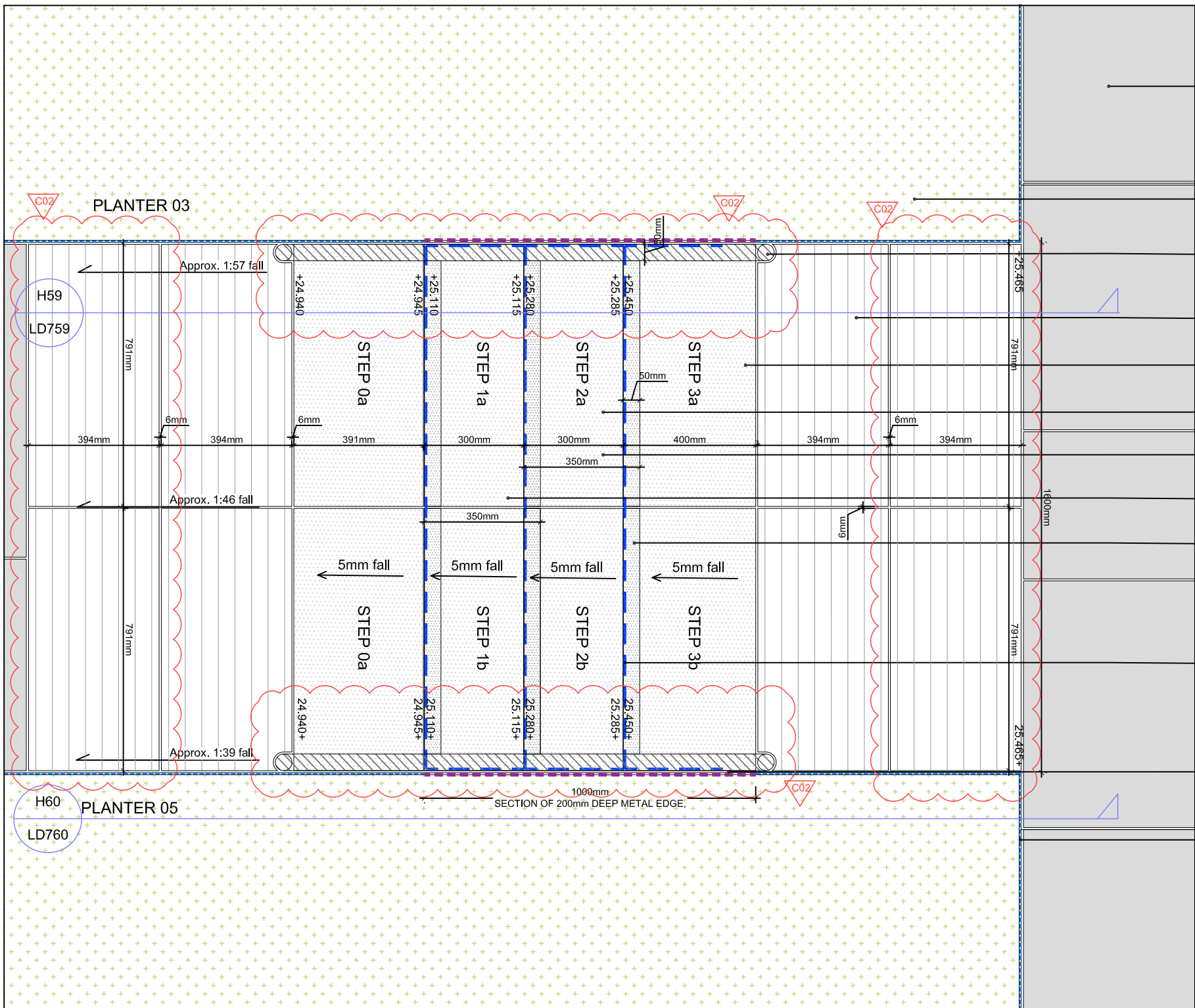
Q & R ZONES
KINGS CROSS CENTRAL

DRAWING TITLE:

JELlicoe GARDENS: STEP DETAILS
BETWEEN PLANTERS 03 & 05
DETAIL PLAN LAYOUT

drawn; CW	scale; 1:15 @ A3	
checked; KmJ	status; Construction	
date; 28.04.2017	xref file ref; ALD766_LDbase	
PROJECT NO. ALD766	DRAWING NUMBER; LD758	REVISION; C02

ORIGINAL A3 SIZE SHEET



SCOUTMOOR SANDSTONE PAVING (TYPE 3) - DIAMOND SAWN FINISH
ROW A: 644/744/944mm LENGTH x 744 WIDTH x 50mm DEEP
ROW B: 644/744/944mm LENGTH x 644 WIDTH x 50mm DEEP
ROW C: 544/744/844mm LENGTH x 544 WIDTH x 50mm DEEP
ROW D: 444/544/644mm LENGTH x 444 WIDTH x 50mm DEEP
BY MILLER DRUCK OR EQUAL AND APPROVED.
REFER TO DRAWING ALD766_LD723

SOFT LANDSCAPING TO TOM STUART-SMITH DRAWINGS AND SPECIFICATIONS

50mm DIAMETER STAINLESS STEEL HANDRAIL BEAD BLASTED FINISH. HANDRAIL TO INCLUDE LIGHTING. DETAILS TO BE DEVELOPED BY SPECIALIST FABRICATOR

SCOUTMOOR SANDSTONE CORDUROY PAVING:
791mm LONG x 394mm WIDE x 50mm DEEP BY MILLER DRUCK OR EQUAL AND APPROVED

SCOUTMOOR SOLID STEP UNIT 3:
791mm LONG X 400mm WIDE X 159mm DEEP WITH DIAMOND SAWN FINISH & INTEGRATE NOSING

SCOUTMOOR SOLID STEP UNIT 2:
791mm LONG X 350mm WIDE X 159mm DEEP WITH DIAMOND SAWN FINISH & INTEGRATED NOSING

SCOUTMOOR SOLID STEP UNIT 1:
791mm LONG X 350mm WIDE X 206mm DEEP WITH DIAMOND SAWN FINISH & INTEGRATED NOSING

SCOUTMOOR STEP TREAD UNIT 0:
791mm LONG X 391mm WIDE X 50mm DEEP WITH DIAMOND SAWN FINISH

STEP NOSING:
741mm LONG X 50mm WIDE X 50mm DEEP CHINA BLACK GRANITE NOSING BY MILLER DRUCK OR EQUAL AND APPROVED. NOSING TO TERMINATE 50mm BEFORE EXPOSED STEP UNIT FACES.

BLUE DASHED LINE DENOTES EXPOSED STEP UNIT FACES WHICH REQUIRE:
- DIAMOND SAWN FINISH
- 5mm ARIS TO ALL EXPOSED EDGES / CORNERS TO STEP UNITS

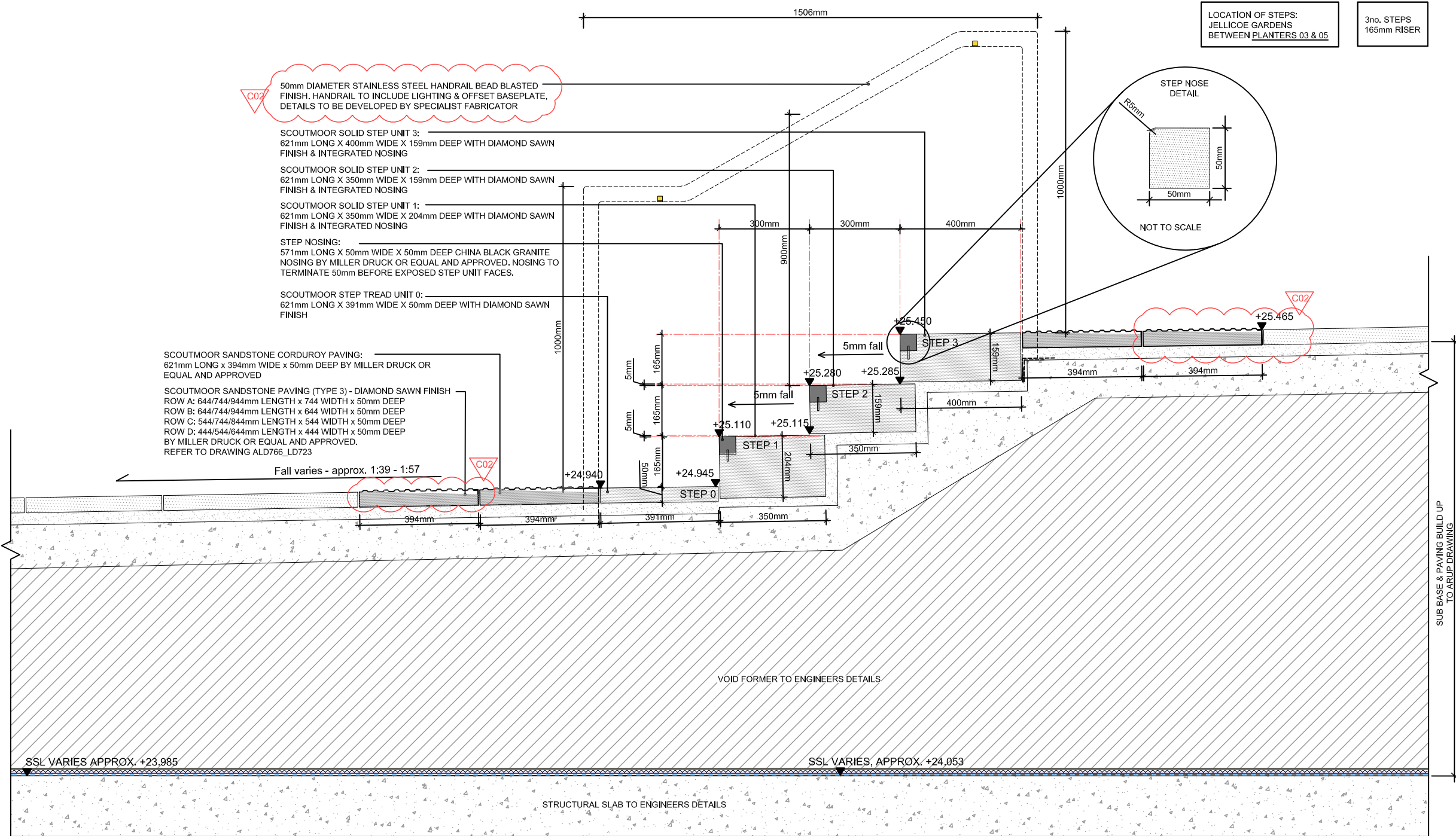
6mm WIDE SLOPED STAINLESS STEEL PLATE (200mm DEEP) FIXED BACK INTO STEP FOUNDATIONS

6mm WIDE FLUSH STAINLESS STEEL ANGLE (90mm DEEP) FIXED WITH METAL PINS
REFER TO DRAWING ALD766_LD713

LOCATION OF STEPS:
JELlicoe GARDENS
BETWEEN PLANTERS 03 & 05

3no. STEPS
165mm RISER

DETAIL H58 - PLAN LAYOUT SHOWING STEPS BETWEEN PLANTERS 03 & 05
SCALE 1:15 @ A3



DETAIL H59 - SECTION THROUGH SOLID STEP UNITS SHOWING HANDRAIL BETWEEN PLANTERS 03 & 05
SCALE 1:15 @ A3

All dimensions to be verified on site. Figure dimensions to be used in preference to those scales. Any areas indicated on this drawing are for guidance only, no responsibility is taken for their accuracy.

The drawing is the property of Applied Landscape Design Limited. Copyright is reserved by them and the drawing is issued on the condition that it is not copied, reproduced, retained or checked to any unauthorised person, either wholly or in part without the written consent in writing of Applied Landscapes.

© 2017 Applied Landscape Design Limited. All rights reserved.

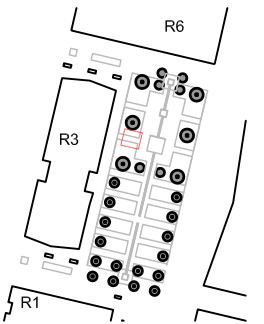
CDM/H&S:

The works illustrated on this drawing have been reviewed against the Design CDM Risk Register and significant risks are noted as:

- Construction:
- Handling heavy materials
 - Working at height
 - Working adjacent to existing structures and buildings

- Maintenance:
- Light bulb changing
 - Working at height (see maintenance)

NOTES / KEY:



REFERENCE DRAWINGS/DOCUMENTS

LD758 - LD760	JELLICOE GARDENS: STEP DETAILS BETWEEN PLANTER 03 & 05

REVISIONS

no.	issued	date
C02	Client details amended and drawing updated for planning resubmission	19.03.18
C01	Updated following TLA comments, first issue for construction	11.10.17
P01	First issue for review / comment	18.08.17

CLIENT:

King's Cross

LANDSCAPE ARCHITECT:

The Threshing Barn
Bignell Park Barns
Chesham, Nr. Bicester
Oxfordshire, OX25 1TD

Tel: 01869 249776
Email: mail@appliedlandscape.co.uk

ALD
applied landscape design

PROJECT:

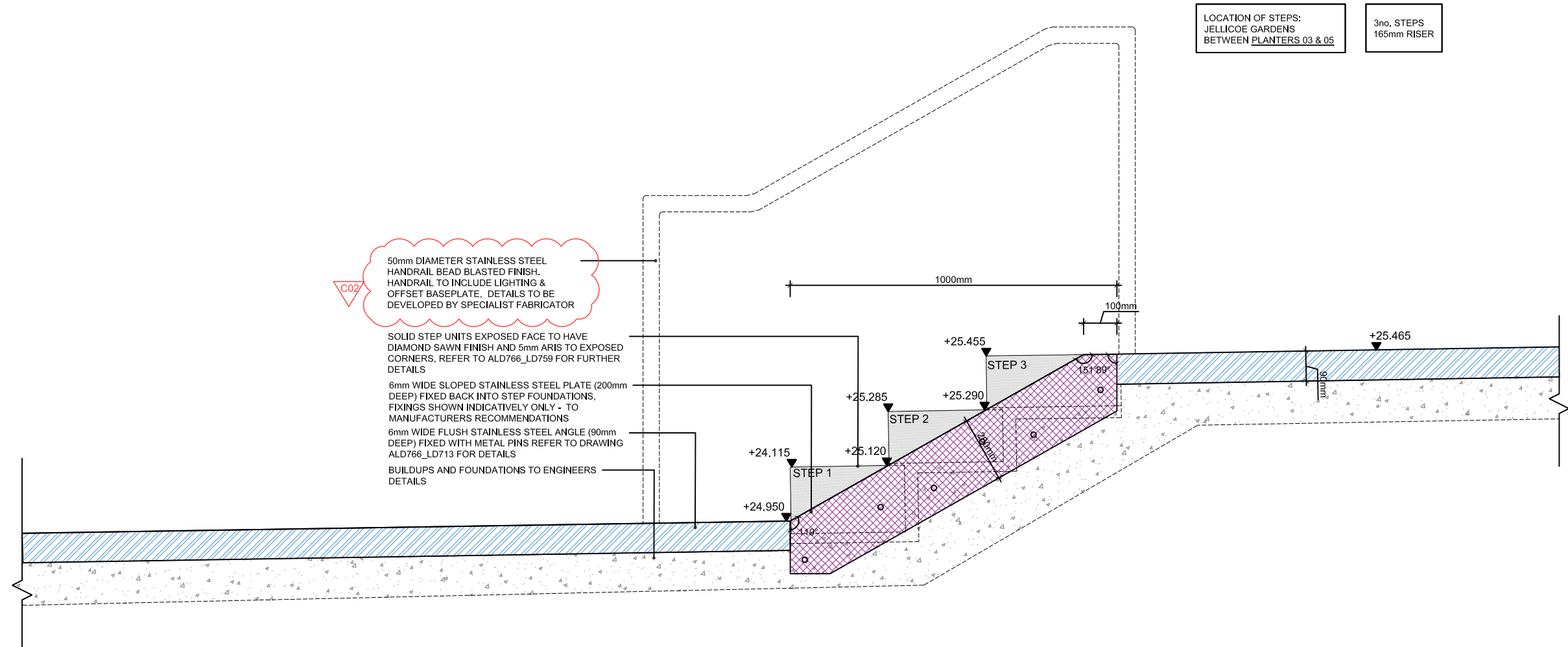
Q & R ZONES
KINGS CROSS CENTRAL

DRAWING TITLE:

**JELLICOE GARDENS: STEP DETAILS
BETWEEN PLANTERS 03 & 05
SECTION THROUGH STEPS**

drawn: CW	scale: 1:15 @ A3	
checked: KmJ	status: Construction	
date: 28.04.2017	xref file ref: ALD766_LDbase	
PROJECT NO. ALD766	DRAWING NUMBER: LD759	REVISION: C02

ORIGINAL A3 SIZE SHEET



DETAIL H60 - ELEVATION SHOWING METAL EDGE & STEPS
BETWEEN PLANTERS 03 & 05
SCALE 1:15 @ A3

LOCATION OF STEPS:
JELLICOE GARDENS
BETWEEN PLANTERS 03 & 05

3no. STEPS
165mm RISER

All dimensions to be verified on site. Figure dimensions to take precedence to those scales. Any areas indicated on this drawing are for guidance only, no responsibility is taken for their accuracy.

The drawing is the property of Applied Landscape Design Limited. Copyright is reserved by them and the drawing is issued on the condition that it is not copied, reproduced, retained or checked to any unauthorised person, either wholly or in part without the written consent in writing of Applied Landscapes.

© 2017 Applied Landscape Design Limited. All rights reserved.

CDM/H&S:

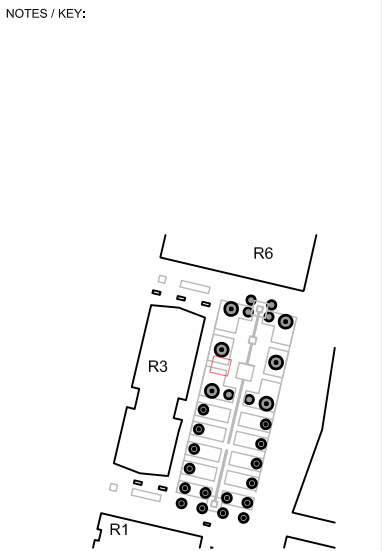
The works illustrated on this drawing have been reviewed against the Design CDM Risk Register and significant risks are noted as:

Construction:

- Handling heavy materials
- Working at height
- Working adjacent to existing structures and buildings

Maintenance:

- Light bulb changing
- Working at height (see maintenance)



REFERENCE DRAWINGS/DOCUMENTS		
LD758 - LD760	JELLICOE GARDENS: STEP DETAILS BETWEEN PLANTER 03 & 05	
REVISIONS		
C02	Client details amended and drawing updated for planning resubmission	19.03.18
C01	Updated following TLA comments, first issue for construction	11.10.17
P01	First issue for review / comment	18.08.17

no.	issued	date
-----	--------	------

CLIENT:

King's Cross

LANDSCAPE ARCHITECT:

The Threshing Barn
Signal Park Barns
Chesham, Nr. Bicester
Oxfordshire, OX26 1TD

Tel: 01869 249776
Email: mail@appliedlandscape.co.uk

ALD
applied landscape design

PROJECT:

Q & R ZONES
KINGS CROSS CENTRAL

DRAWING TITLE:

**JELLICOE GARDENS: STEP DETAILS
BETWEEN PLANTERS 03 & 05
SECTION THROUGH METAL EDGE**

drawn; CW	scale; 1:15 @ A3	
checked; KmJ	status; Construction	
date; 28.04.2017	xref file ref; ALD766_LDbase	
PROJECT NO. ALD766	DRAWING NUMBER; LD760	REVISION; C02

APPENDIX C: TYPICAL DETAILS - Steps between Planters 05 & 06 - Central Steps



3no. Steps with 160mm riser
with central water feature sloped rill unit

CDM/H&S:

The works illustrated on this drawing have been reviewed against the Design CDM Risk Register and significant risks are noted as:

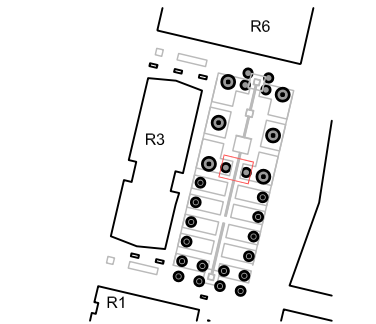
Consequence:

- Handling heavy materials
- Working at height
- Working adjacent to existing structures and buildings

Maintenance:

- Light bulb changing
- Working at height (tree maintenance)

NOTES / KEY:



REFERENCE DRAWINGS/DOCUMENTS

LD744	STEP RILL CHANNEL AXONOMETRIC
LD750 - LD960	JELICOE GARDENS: STEP DETAILS

REVISIONS

no.	issued	date
C02	Client details amended and drawing updated for planning resubmission	19.03.18
C01	Updated following TLA comments, first issue for construction	11.10.17
P01	First issue for review / comment	18.08.17

CLIENT:

King's Cross

LANDSCAPE ARCHITECT:

The Threshing Barn
Bignell Park Barns
Chesham, Nr. Bicester
Oxfordshire, OX25 1TD

Tel: 01869 249776
Email: mail@appliedlandscape.co.uk

ALD
applied landscape design

PROJECT:

Q & R ZONES
KINGS CROSS CENTRAL

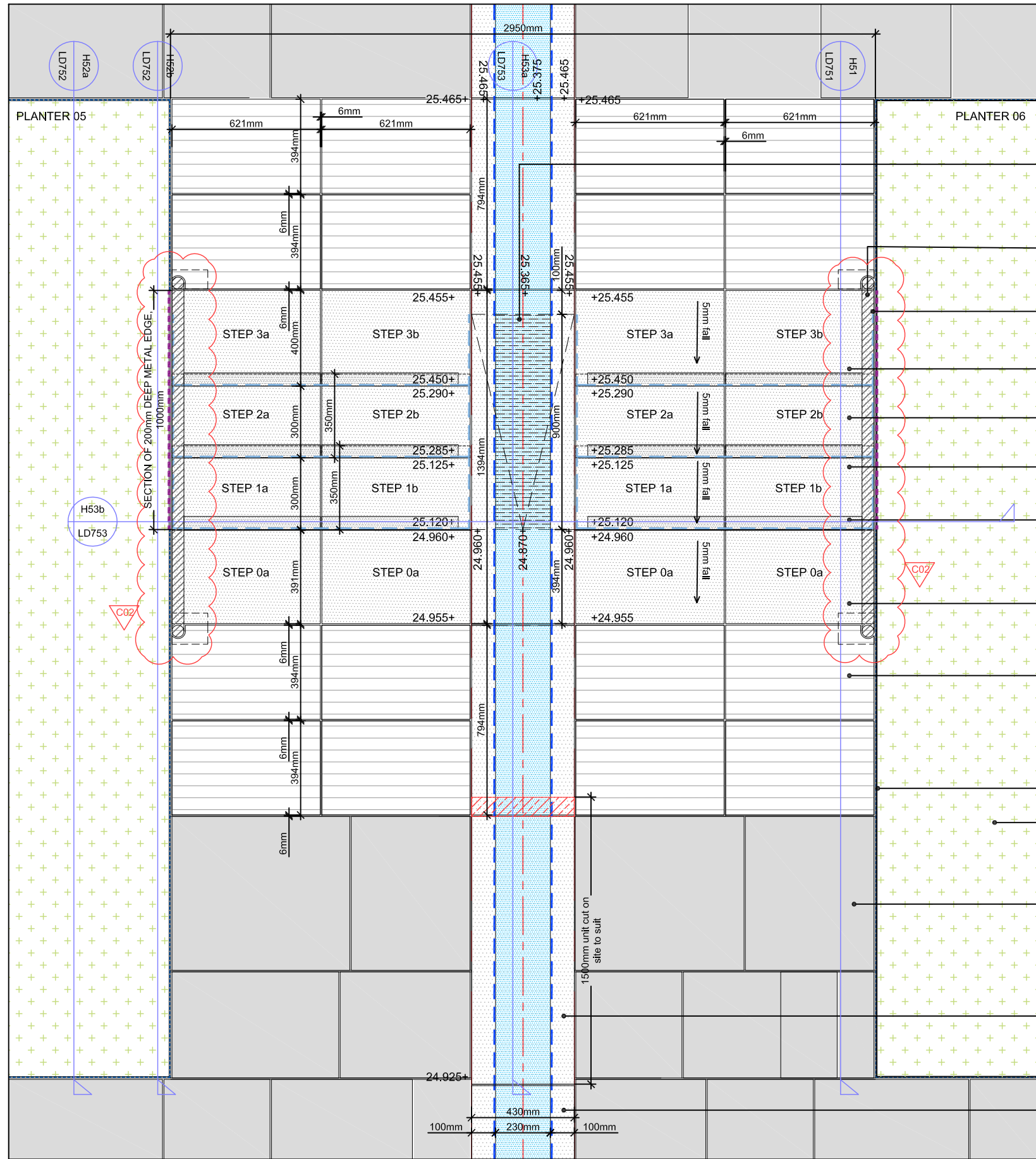
DRAWING TITLE:

JELICOE GARDENS: STEP DETAILS
BETWEEN PLANTERS 05 & 06

PLAN LAYOUT

drawn: CW	scale: 1:20 @ A3	
checked: KmJ	status: Construction	
date: 28.04.2017	xref file ref: ALD766_LDbase	
PROJECT NO. ALD766	DRAWING NUMBER: LD750	REVISION: C02

ORIGINAL A3 SIZE SHEET



DETAIL H50 - PLAN LAYOUT SHOWING CENTRAL STEPS BETWEEN PLANTERS 05 & 06
WITH WATER FEATURE RILL
SCALE 1:20 @ A3

LOCATION OF STEPS:
JELICOE GARDENS
BETWEEN PLANTERS 05 & 06
3no. STEPS
160mm STEP RISER

FOR STEPS AND RILL CHANNEL AXONOMETRIC, REFER TO
DRAWING ALD766_LD744

WATER FEATURE RILL (SPECIAL UNIT)
1394mm LONG x 430mm WIDE OVERSIZED UNIT WITH SLOPED SECTION.
SLOPED SECTION TO HAVE ROUGH FINISH - TO BE AGREED
FOLLOWING SAMPLE APPROVAL, REFER TO ELEVATIONS
ALD766_LD753 FOR FURTHER DETAILS

50mm DIAMETER STAINLESS STEEL HANDRAIL BEAD BLASTED
FINISH. HANDRAIL TO INCLUDE LIGHTING & OFFSET BASEPLATE,
DETAILS TO BE DEVELOPED BY SPECIALIST FABRICATOR

BLUE DASHED LINE DENOTES EXPOSED UNIT FACES WHICH REQUIRE:
- DIAMOND SAWN (TO STEPS) FLAMED (TO RILL) EXPOSED FACES
- 2mm CHAMFER TO RILL EXPOSED EDGES / CORNERS
- 5mm ARIS TO STEP EXPOSED EDGES / CORNERS

SCOUTMOOR SOLID STEP UNIT 3:
621mm LONG X 400mm WIDE X 154mm DEEP WITH DIAMOND SAWN
FINISH & INTEGRATED NOSING

SCOUTMOOR SOLID STEP UNIT 2:
621mm LONG X 350mm WIDE X 154mm DEEP WITH DIAMOND SAWN
FINISH & INTEGRATED NOSING

SCOUTMOOR SOLID STEP UNIT 1:
621mm LONG X 350mm WIDE X 204mm DEEP WITH DIAMOND SAWN
FINISH & INTEGRATED NOSING

STEP NOSING:
571mm LONG X 50mm WIDE X 50mm DEEP CHINA BLACK GRANITE
NOSING BY MILLER DRUCK OR EQUAL AND APPROVED. NOSING TO
TERMINATE 50mm BEFORE EXPOSED STEP UNIT FACES.

SCOUTMOOR STEP TREAD UNIT 0:
621mm LONG X 391mm WIDE X 50mm DEEP WITH DIAMOND SAWN
FINISH

SCOUTMOOR SANDSTONE CORDUROY PAVING:
621mm LONG x 394mm WIDE x 50mm DEEP BY MILLER DRUCK OR
EQUAL AND APPROVED

6mm WIDE FLUSH STAINLESS STEEL ANGLE (90mm DEEP) FIXED
WITH METAL PINS REFER TO DRAWING ALD766_LD713

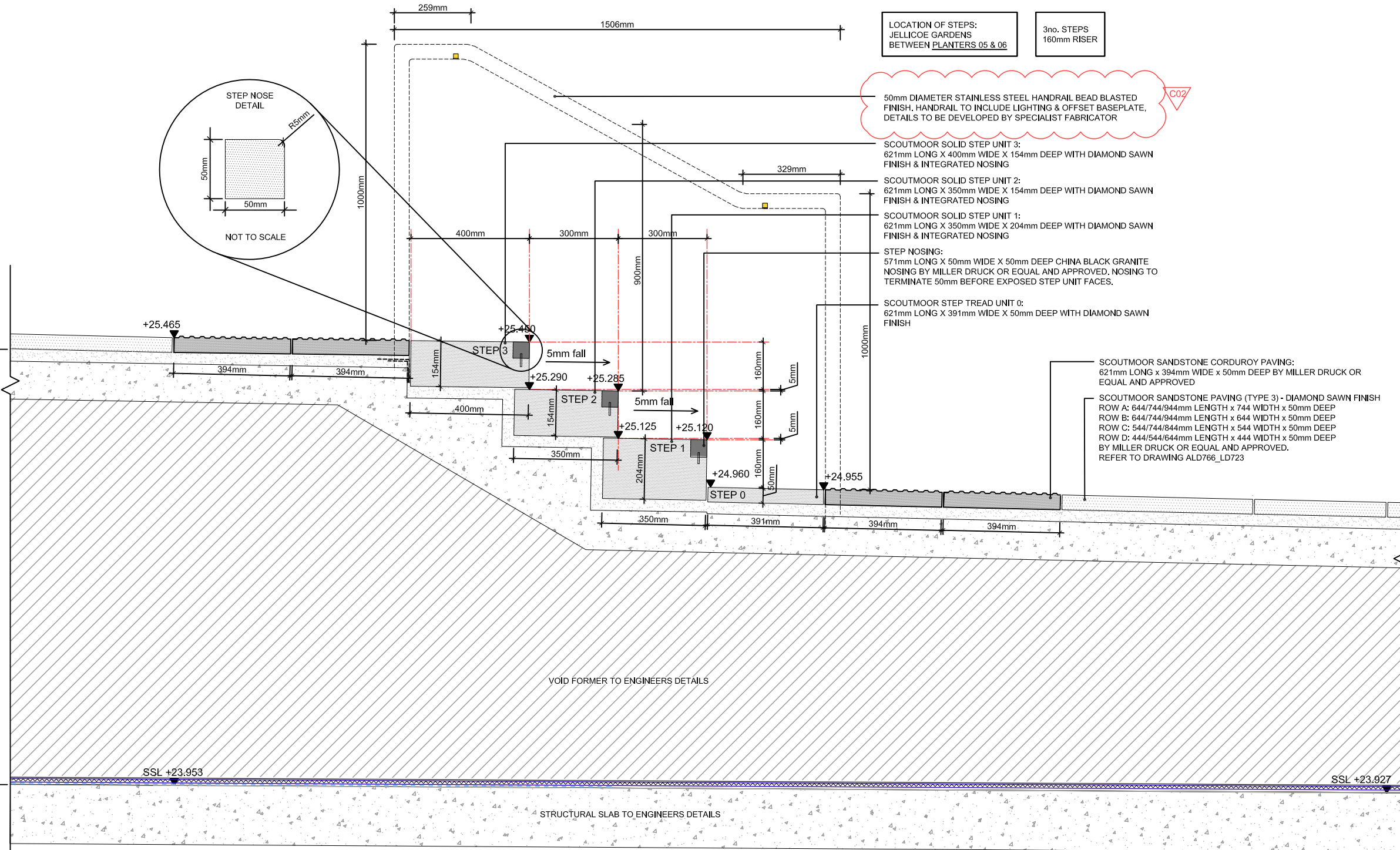
SOFT LANDSCAPING TO TOM STUART-SMITH DRAWINGS AND
SPECIFICATIONS

SCOUTMOOR SANDSTONE PAVING (TYPE 3) - DIAMOND SAWN FINISH
ROW A: 644/744/944mm LENGTH x 744 WIDTH x 50mm DEEP
ROW B: 644/744/944mm LENGTH x 644 WIDTH x 50mm DEEP
ROW C: 544/744/844mm LENGTH x 544 WIDTH x 50mm DEEP
ROW D: 444/544/644mm LENGTH x 444 WIDTH x 50mm DEEP
BY MILLER DRUCK OR EQUAL AND APPROVED.
REFER TO DRAWING ALD766_LD723

WATER FEATURE RILL (STANDARD UNIT CUT)
1500mm LONG x 430mm WIDE UNIT TO BE CUT ON SITE TO SUIT, REFER
TO DRAWING ALD766_LD741 FOR DETAILS

WATER FEATURE RILL
TYPICALLY 1500mm LONG x 430mm WIDE, REFER TO DRAWING
ALD766_LD740 FOR DETAILS

SUB BASE & PAVING BUILD UP
TO ARUP DRAWING



DETAIL H51 - SECTION THROUGH SOLID STEP UNITS SHOWING HANDRAIL BETWEEN PLANTERS 05 & 06
SCALE 1:15 @ A3

All dimensions to be verified on site. Figured dimensions to take precedent to those scaled. Any areas indicated on this drawing are for guidance only, no responsibility is taken for their accuracy.

The drawing is the property of Applied Landscape Design Limited. Copyright is reserved by them and the drawing is issued on the condition that it is not copied, reproduced, retained or disclosed to any unauthorised person, other vehicle or its part without the written consent in writing of Applied Landscapes.

© 2017 Applied Landscape Design Limited. All rights reserved.

CDM/H&S:

The works illustrated on this drawing have been reviewed against the Design CDM Risk Register and significant risks are noted as:

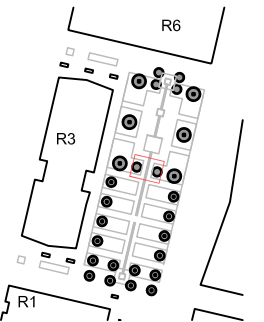
Construction:

- Handling heavy materials
- Working at height
- Working adjacent to existing structures and buildings

Maintenance:

- Light bulb changing
- Working at height (see maintenance)

NOTES / KEY:



REFERENCE DRAWINGS/DOCUMENTS

LD744	STEP RILL CHANNEL AXONOMETRIC
LD750 - LD760	JELICOE GARDENS: STEP DETAILS BETWEEN PLANTER 05 & 06

REVISIONS

no.	issued	date
C02	Client details amended and drawing updated for planning resubmission	19.03.18
C01	Updated following TLA comments, first issue for construction	11.10.17
P01	First issue for review / comment	18.08.17

CLIENT:

King's Cross

LANDSCAPE ARCHITECT:

The Threshing Barn
Bignell Park Barns
Chesherton, Nr. Bicester
Oxfordshire, OX26 1TD

Tel: 01869 249776
Email: mail@appliedlandscape.co.uk

ALD
applied landscape design

PROJECT:

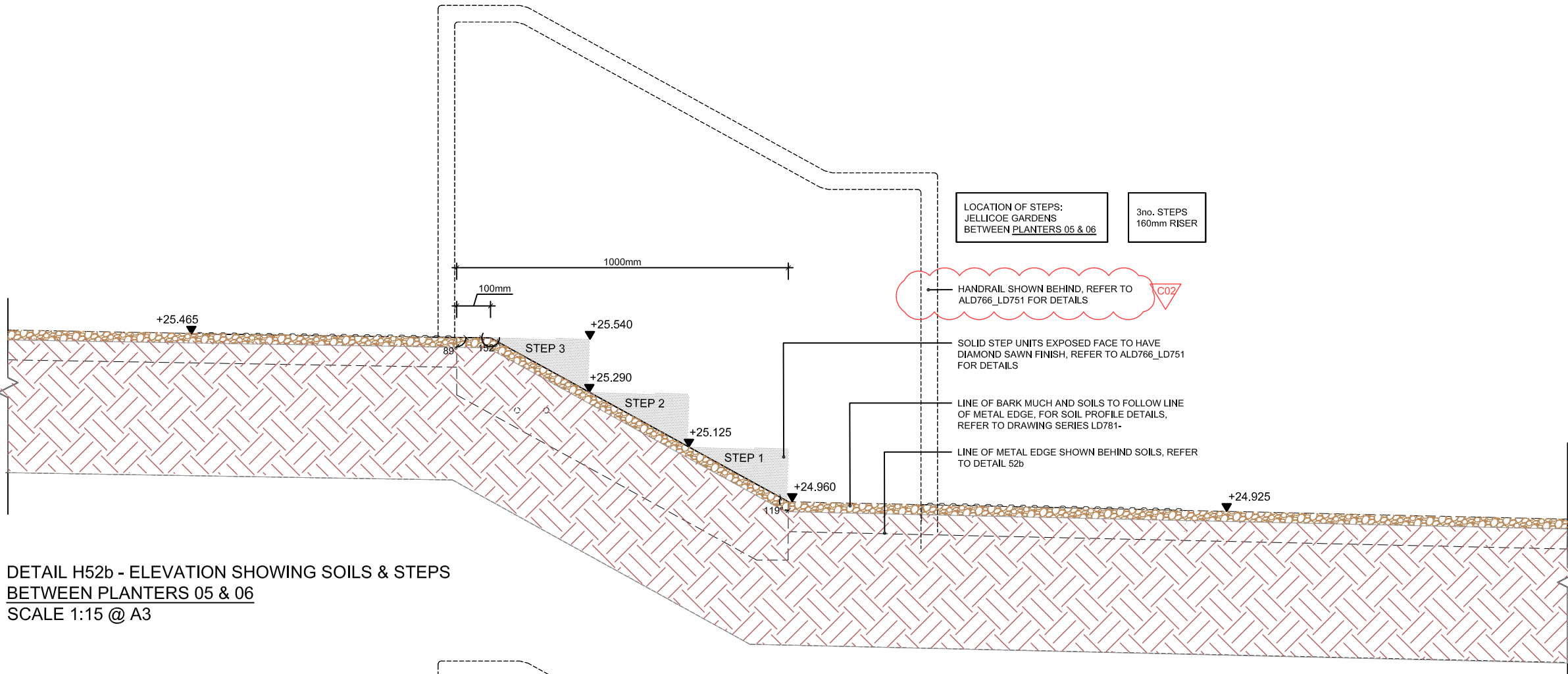
Q & R ZONES
KINGS CROSS CENTRAL

DRAWING TITLE:

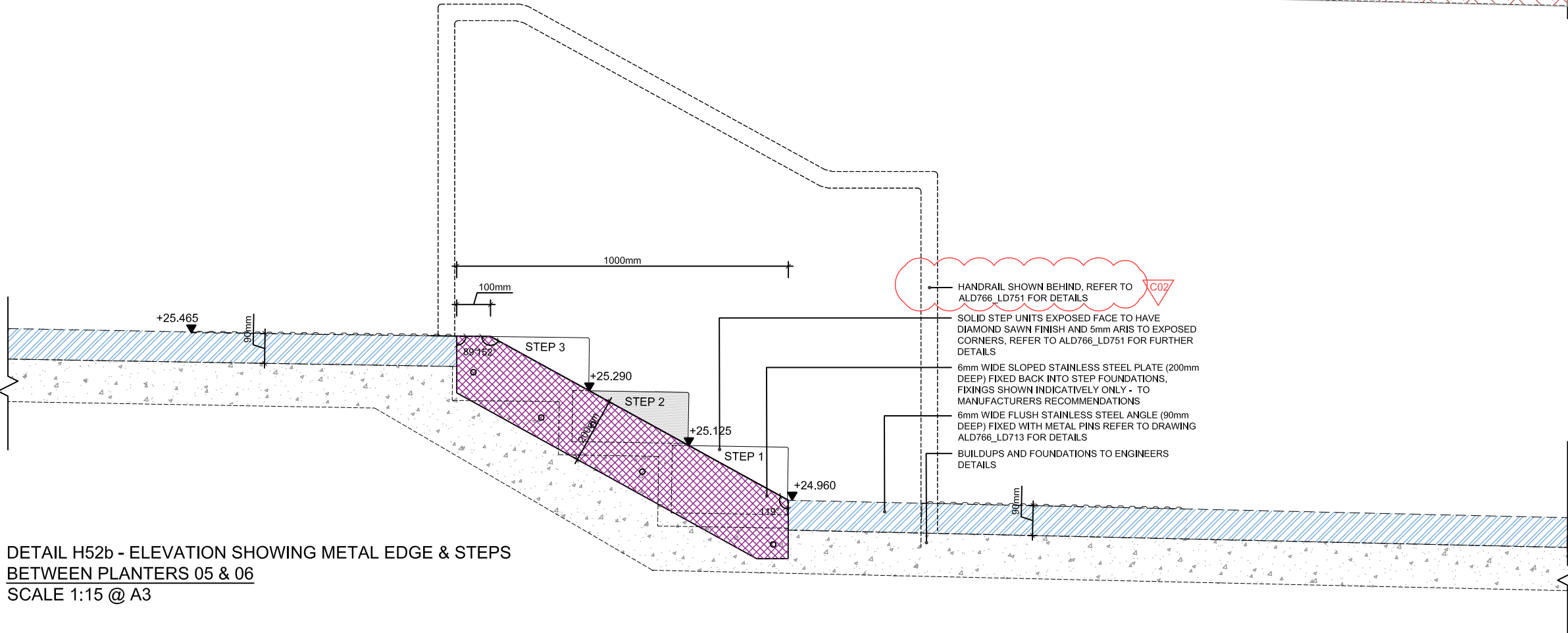
JELICOE GARDENS: STEP DETAILS
BETWEEN PLANTERS 05 & 06
SECTION THROUGH STEPS

drawn:	scale:	
CW	1:15 @ A3	
checked:	status:	
KmJ	Construction	
date:	xref file ref:	
28.04.2017	ALD766_LDbase	
PROJECT NO.	DRAWING NUMBER:	REVISION:
ALD766	LD751	C02

ORIGINAL A3 SIZE SHEET



DETAIL H52b - ELEVATION SHOWING SOILS & STEPS
BETWEEN PLANTERS 05 & 06
SCALE 1:15 @ A3



DETAIL H52b - ELEVATION SHOWING METAL EDGE & STEPS
BETWEEN PLANTERS 05 & 06
SCALE 1:15 @ A3

All dimensions to be verified on site. Figure dimensions to take precedence to those scales. Any areas indicated on this drawing are for guidance only, no responsibility is taken for their accuracy.

The drawing is the property of Applied Landscape Design Limited. Copyright is reserved by them and the drawing is issued on the condition that it is not copied, reproduced, retained or checked to any unauthorised person, either wholly or in part without the written consent in writing of Applied Landscapes.

© 2017 Applied Landscape Design Limited. All rights reserved.

CDM/H&S:

The works illustrated on this drawing have been reviewed against the Design CDM Risk Register and significant risks are noted as:

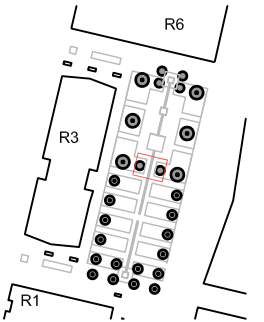
Construction:

- Handling heavy materials
- Working at height
- Working adjacent to existing structures and buildings

Maintenance:

- Light bulb changing
- Working at height (tree maintenance)

NOTES / KEY:



REFERENCE DRAWINGS/DOCUMENTS

LD744	STEP RILL CHANNEL AXONOMETRIC
LD750 - LD760	JELLICOE GARDENS: STEP DETAILS BETWEEN PLANTER 05 & 06

REVISIONS

no.	issued	date
C02	Client details amended and drawing updated for planning resubmission	19.03.18
C01	Updated following TLA comments, first issue for construction	11.10.17
P01	First issue for review / comment	18.08.17

CLIENT:

King's Cross

LANDSCAPE ARCHITECT:

The Threshing Barn
Bignell Park Barns
Chesham, Nr. Bicester
Oxfordshire, OX26 1TD

Tel: 01869 249776
Email: mail@appliedlandscape.co.uk

ALD
applied landscape design

PROJECT:

**Q & R ZONES
KINGS CROSS CENTRAL**

DRAWING TITLE:

**JELLICOE GARDENS: STEP DETAILS
BETWEEN PLANTERS 05 & 06
SECTIONS SHOWING METAL EDGE**

drawn; CW	scale; 1:15 @ A3	
checked; KmJ	status; Construction	
date; 28.04.2017	xref file ref; ALD766_LDbase	
PROJECT NO. ALD766	DRAWING NUMBER; LD752	REVISION; C02

ORIGINAL A3 SIZE SHEET

