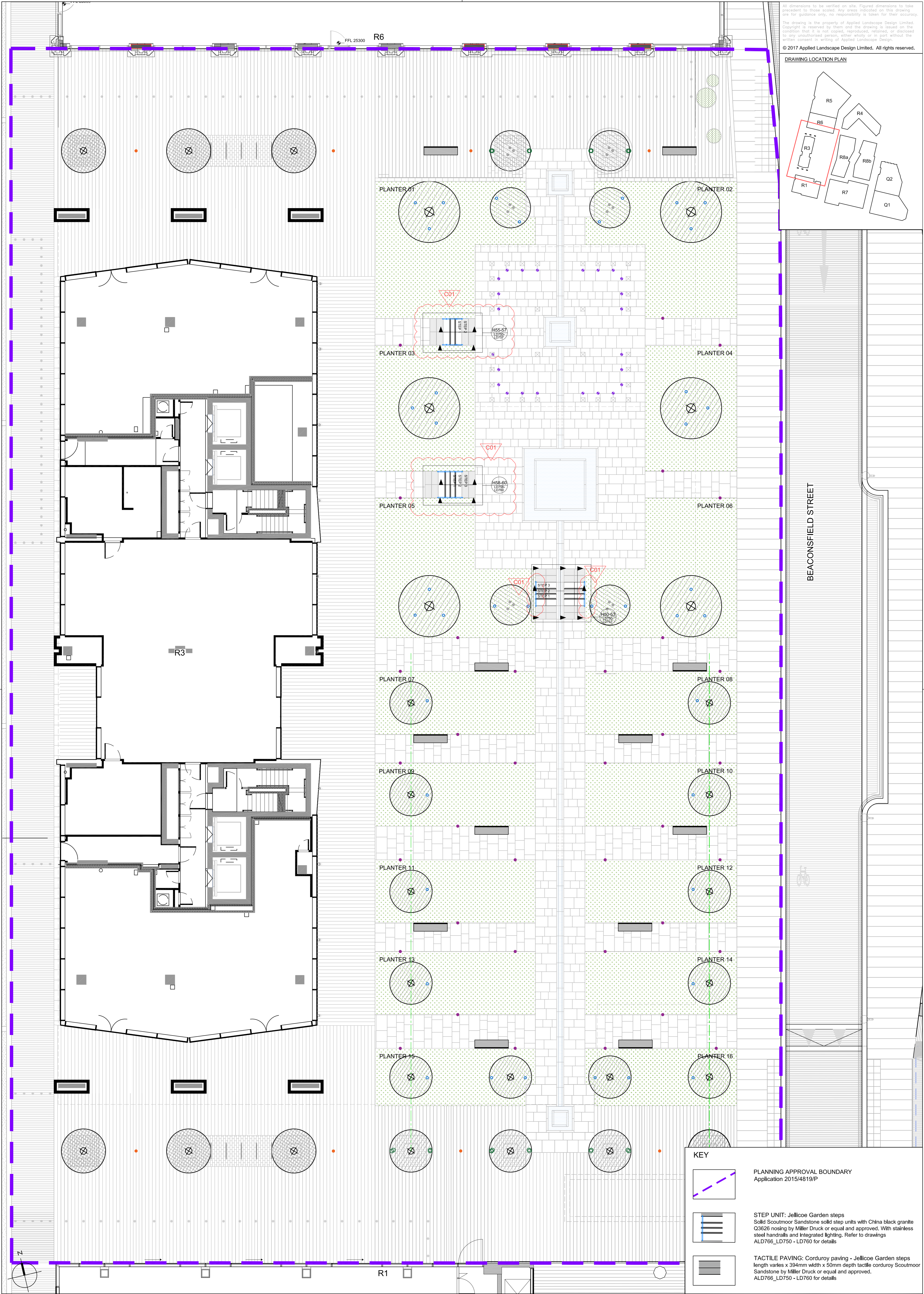
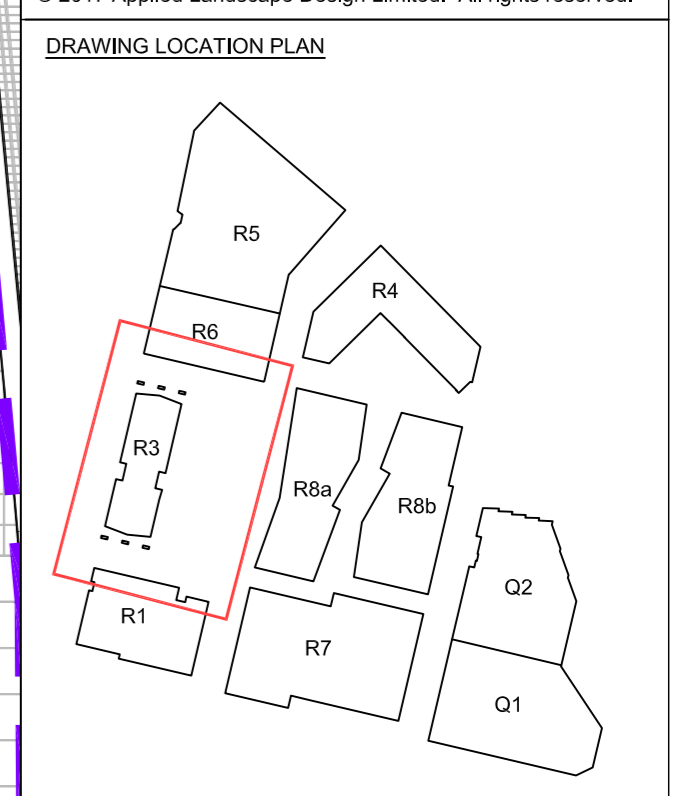


All dimensions to be verified on site. Figured dimensions to take precedence to those scaled. Any areas indicated on this drawing are for guidance only, no responsibility is taken for their accuracy.

The drawing is the property of Applied Landscape Design Limited. Copyright is reserved by them and the drawing is issued on the condition that it is not copied, reproduced, retained, or disclosed to any unauthorised person, either wholly or in part without the written consent in writing of Applied Landscape Design.

© 2017 Applied Landscape Design Limited. All rights reserved.



BEACONSFIELD STREET

KEY

- PLANNING APPROVAL BOUNDARY Application 2015/4819/P
- STEP UNIT: Jellicoe Garden steps
Solid Scoutmoor Sandstone solid step units with China black granite Q3626 nosing by Miller Druck or equal and approved. With stainless steel handrails and integrated lighting. Refer to drawings ALD766_LD750 - LD760 for details
- TACTILE PAVING: Corduroy paving - Jellicoe Garden steps length varies x 394mm width x 50mm depth tactile corduroy Scoutmoor Sandstone by Miller Druck or equal and approved. ALD766_LD750 - LD760 for details

LANDSCAPE ARCHITECT:

The Threshing Barn
Bignell Park Barns
Chesterton
Oxfordshire
OX26 1TD

Tel: 01869 248776
Fax: 01869 327513
Email: mail@appliedlandscape.co.uk

Rev.	Update	Date
C01	Construction Issue - Client details amended	20.03.18
P01	Issue for Approval	24.10.17

PROJECT: **Q & R ZONE
KINGS CROSS CENTRAL**

CLIENT: **King's Cross**

drawn:	CW	checked:	KmJ
scale:	1:100 @ A1	date:	23.10.2017
status:	Construction	xref file ref:	ALD766_MPbase-planning

DRAWING TITLE: **Q & R ZONE: JELICOE GARDENS
STEPS GENERAL ARRANGEMENT**

PROJECT NO.	DRAWING NUMBER:	REVISION:
ALD766P	HL191	C01