



The photos above show that no.4 Oak Hill Parl Mews is hidden from most view points by numbers 1-3 Oak Hill Park Mews. No 4 is only really visible when no.5 and no.6 are approached more closely. Note also that the ground floor of no.4 is completely hidden from view by the porch structure of no.5 and the glazing of no.4 has been replaced with non-matching brown and black powdercoated aluminium glazing.

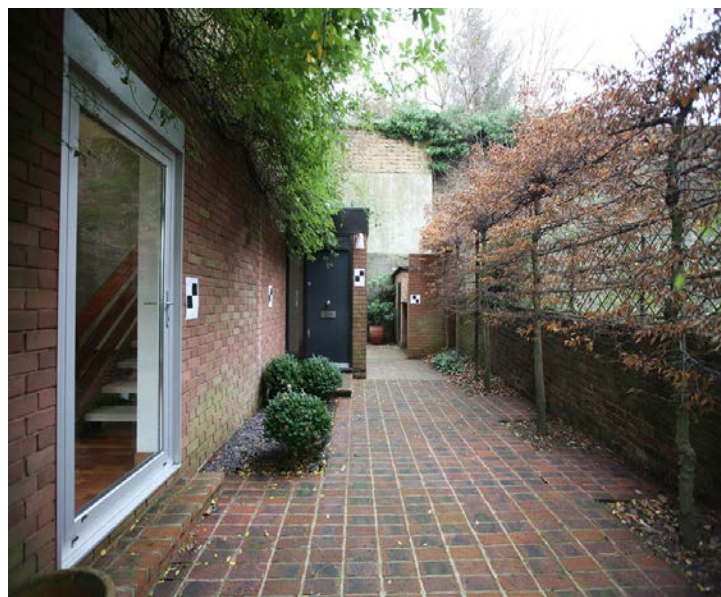
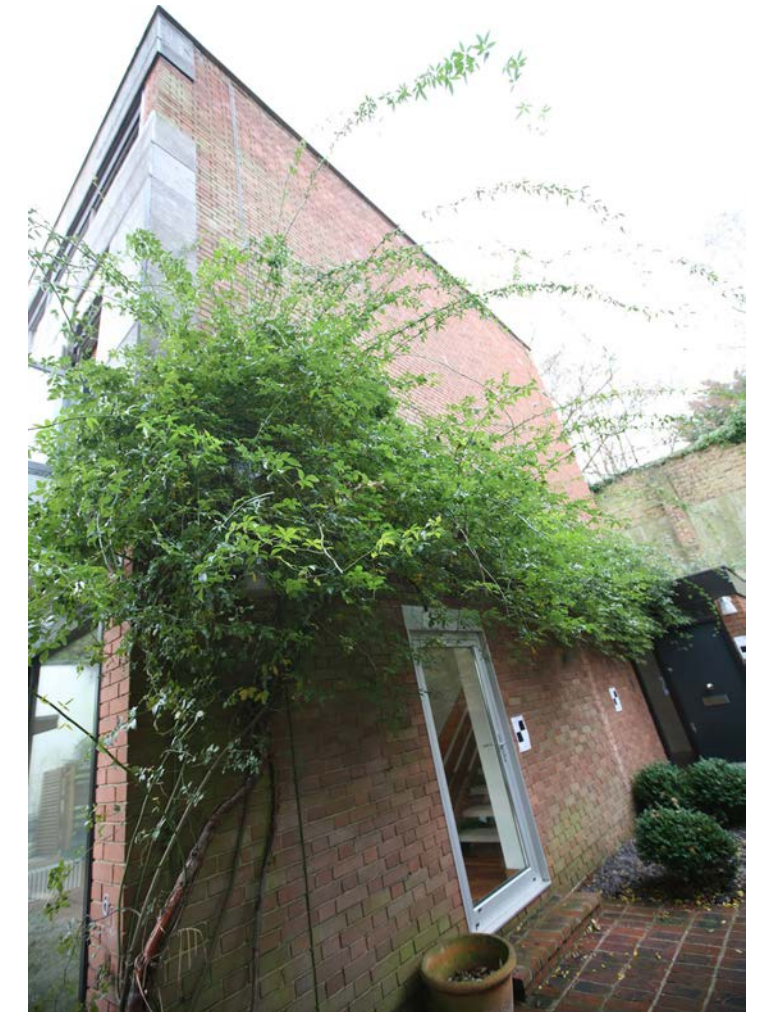


The above two photos show how concealed from view Oak Hill Park Mews is. On the estate, the mews can only be seen from within the mews itself.

**Photographic record** - document 176/P1701  
Document dated 22nd March 2018

5-6 Oak Hill Park Mews, Hampstead, London NW3 7LH  
For Matt Lyons



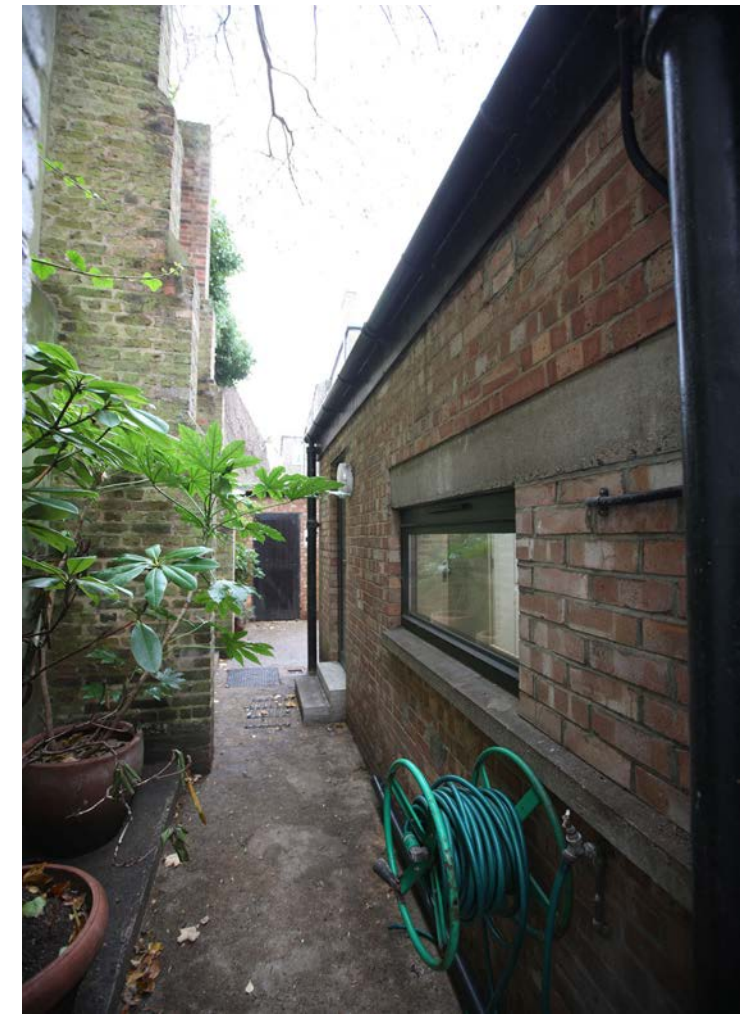


These photos show in greater detail the differences already apparent between the glazing of no.4, no.5 and no.5 and also how well hidden no.4 is from anywhere other than the upper part of the mews.

**Photographic record** - document 176/P1701  
Document dated 22nd March 2018

5-6 Oak Hill Park Mews, Hampstead, London NW3 7LH  
For Matt Lyons





Photographic record - document 176/P1701  
Document dated 22nd March 2018

5-6 Oak Hill Park Mews, Hampstead, London NW3 7LH  
For Matt Lyons