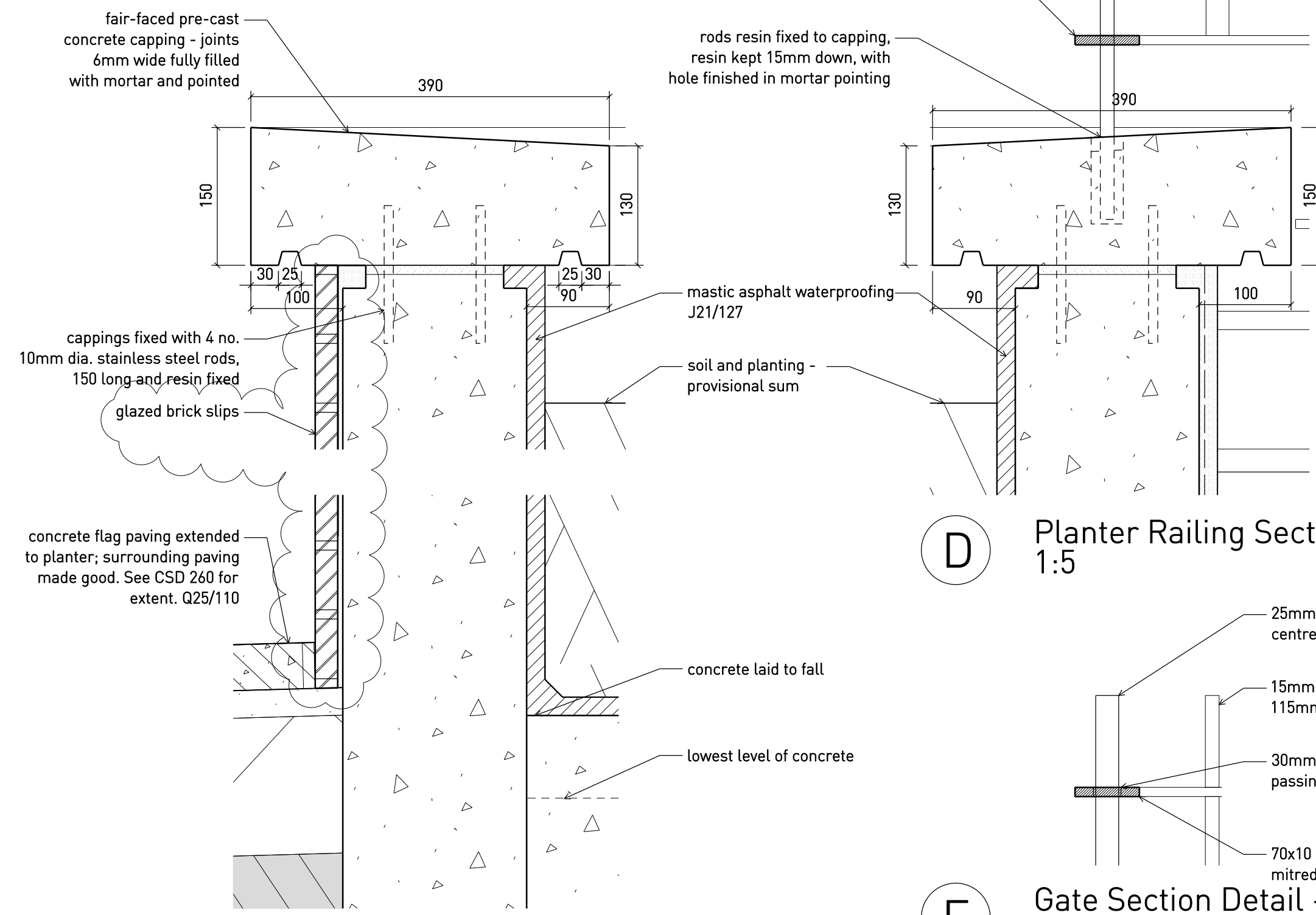
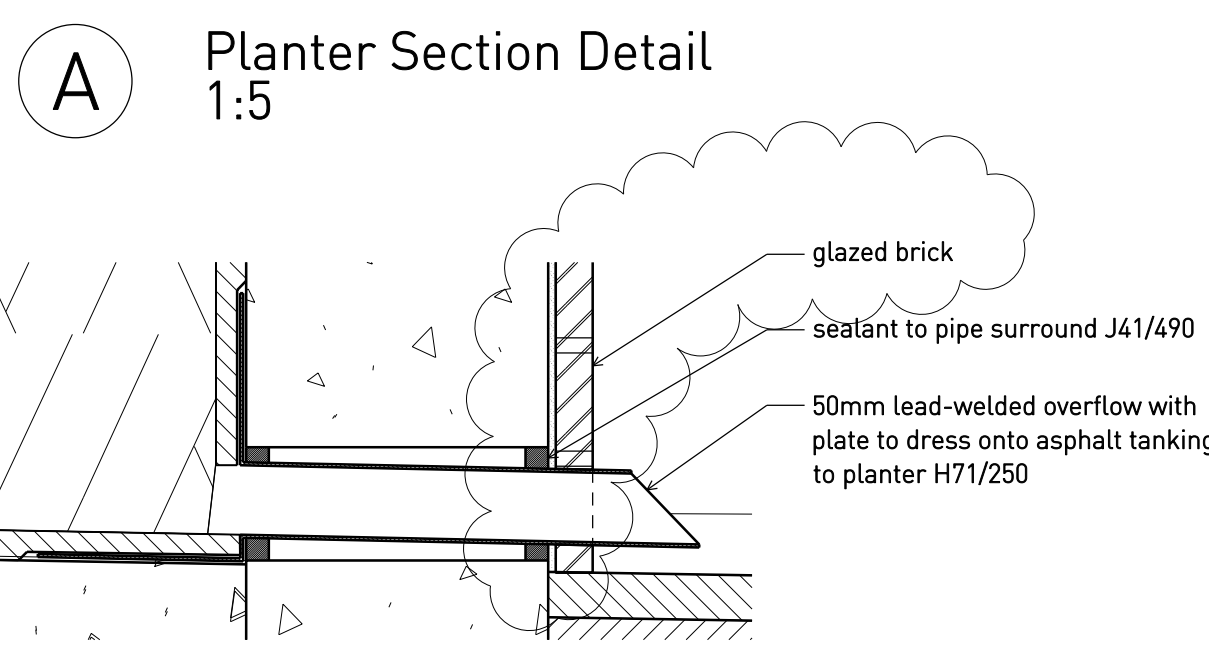


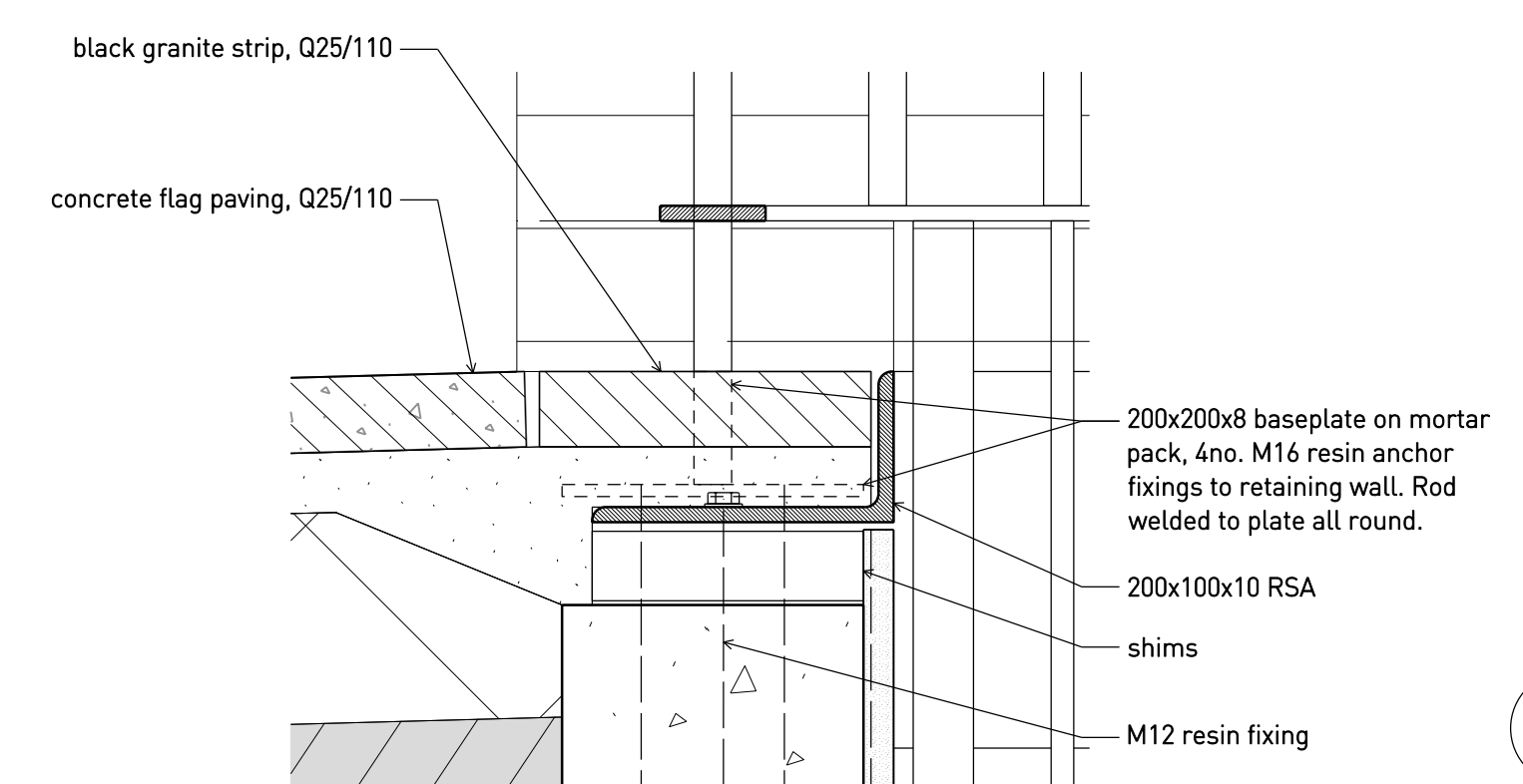
V Retaining Wall Section Detail 1:5



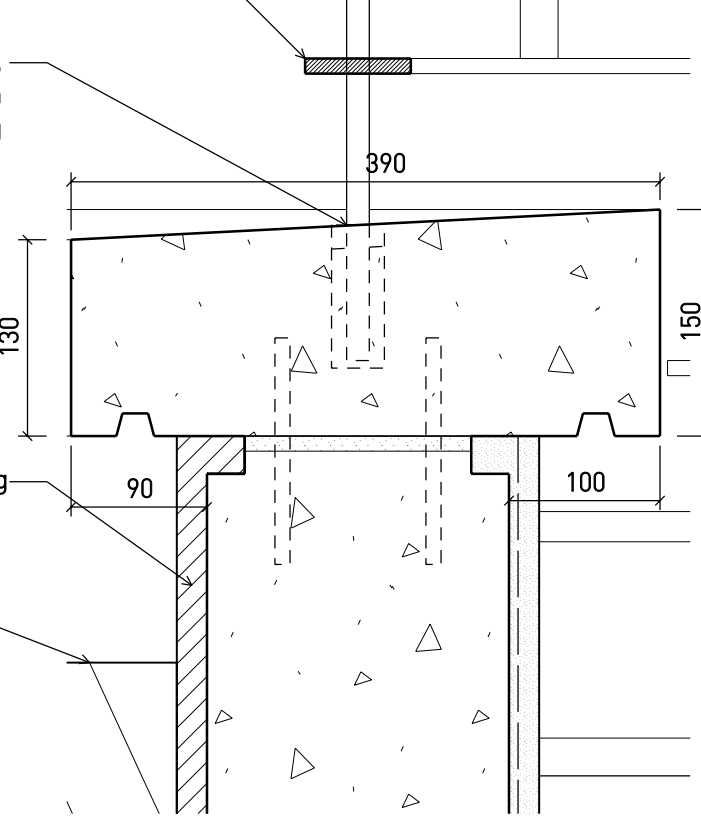
D Planter Railing Section Detail 1:5



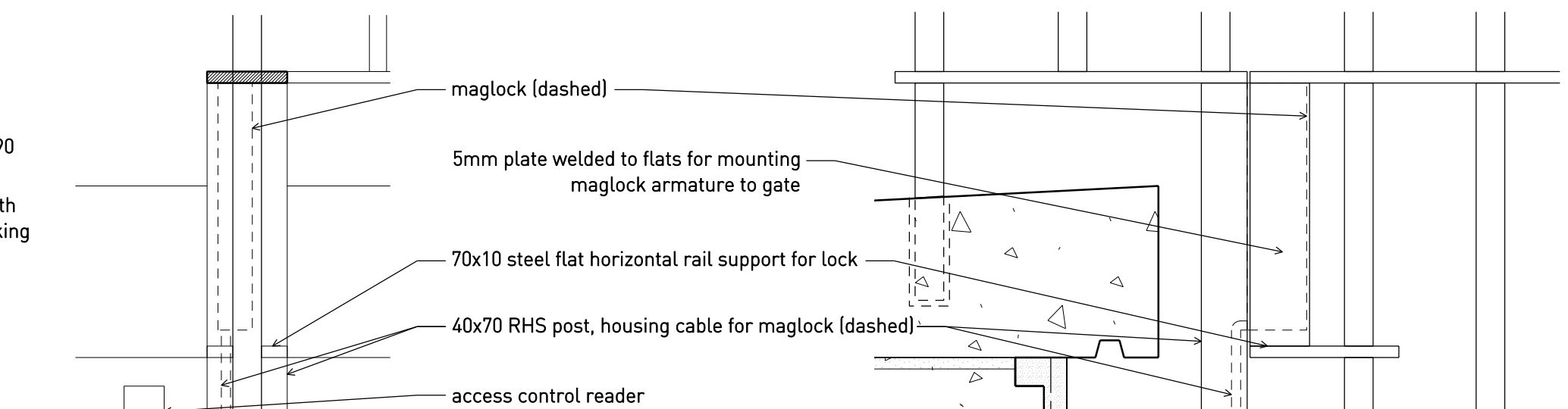
B Planter Drainage Section Detail 1:5



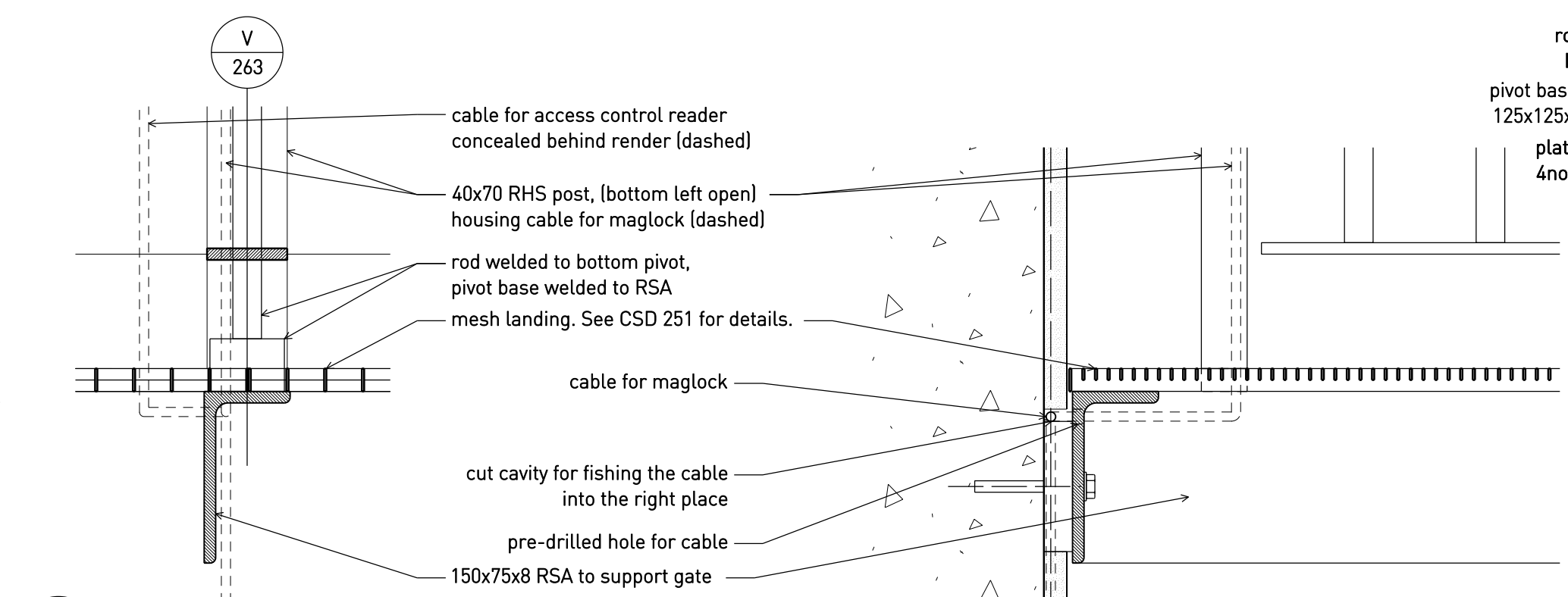
C Void Edge Section Detail 1:5



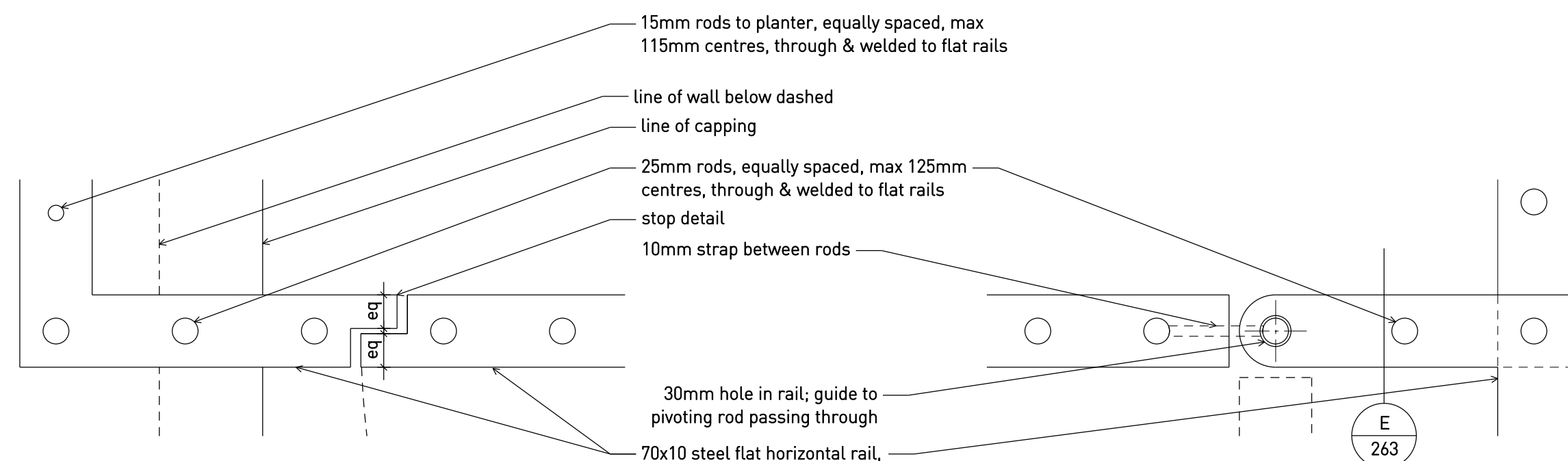
E Gate Section Detail - High 1:5



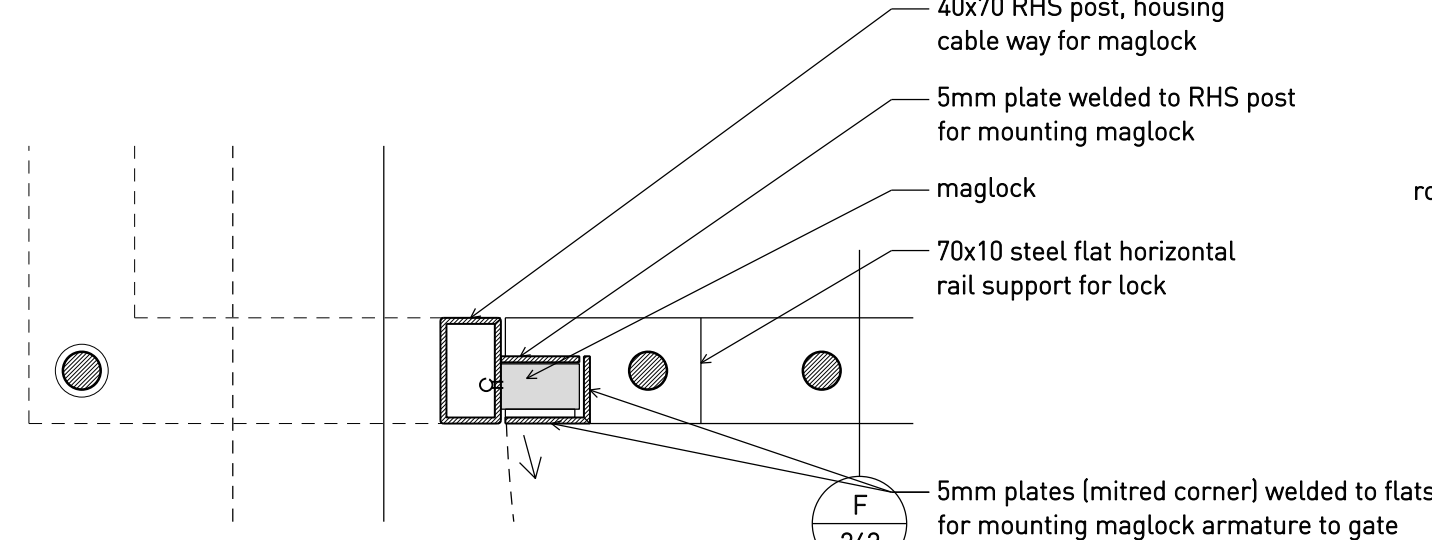
F Gate Section Detail - Mid 1:5



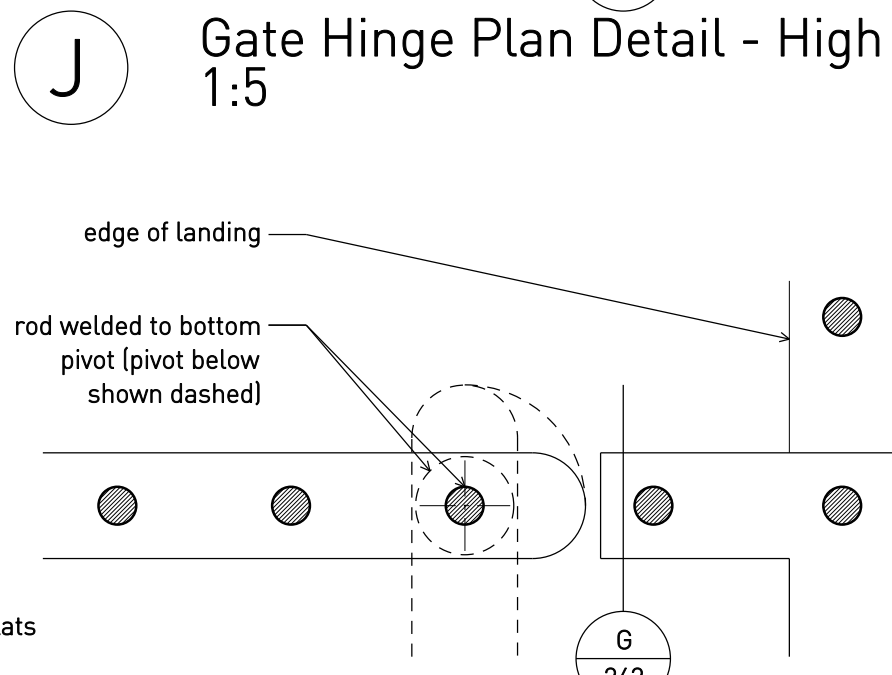
G Gate Section Detail - Low 1:5



H Gate Jamb Plan Detail - High 1:5

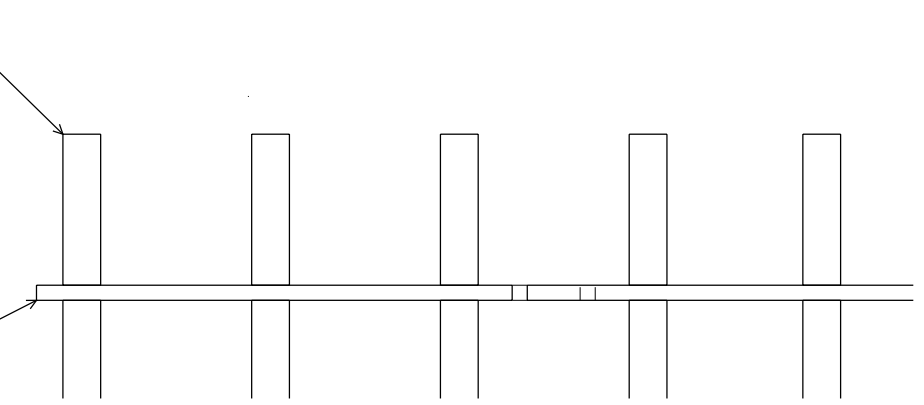


K Gate Jamb Plan Detail - Through Lock 1:5 (As detail H unless otherwise noted)

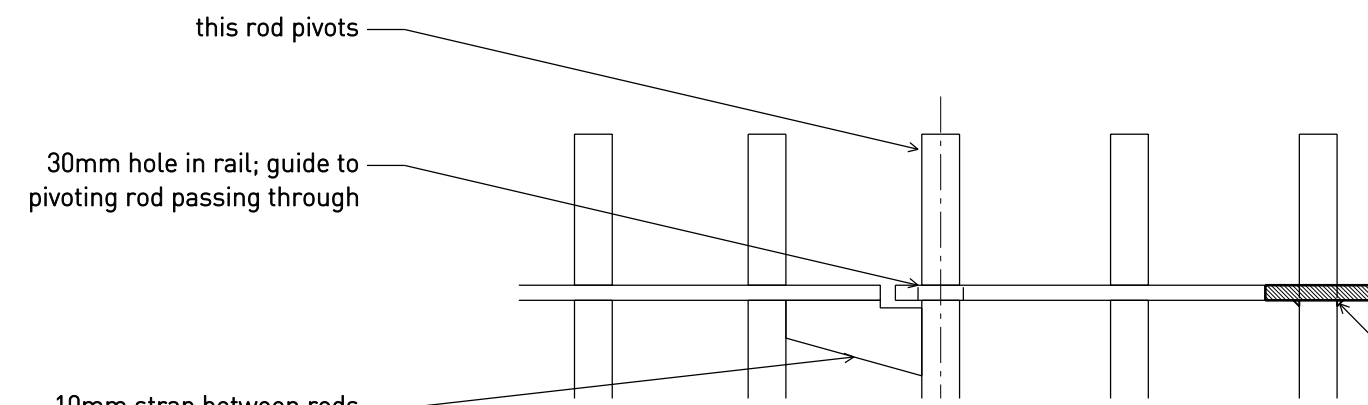


J Gate Hinge Plan Detail - High 1:5

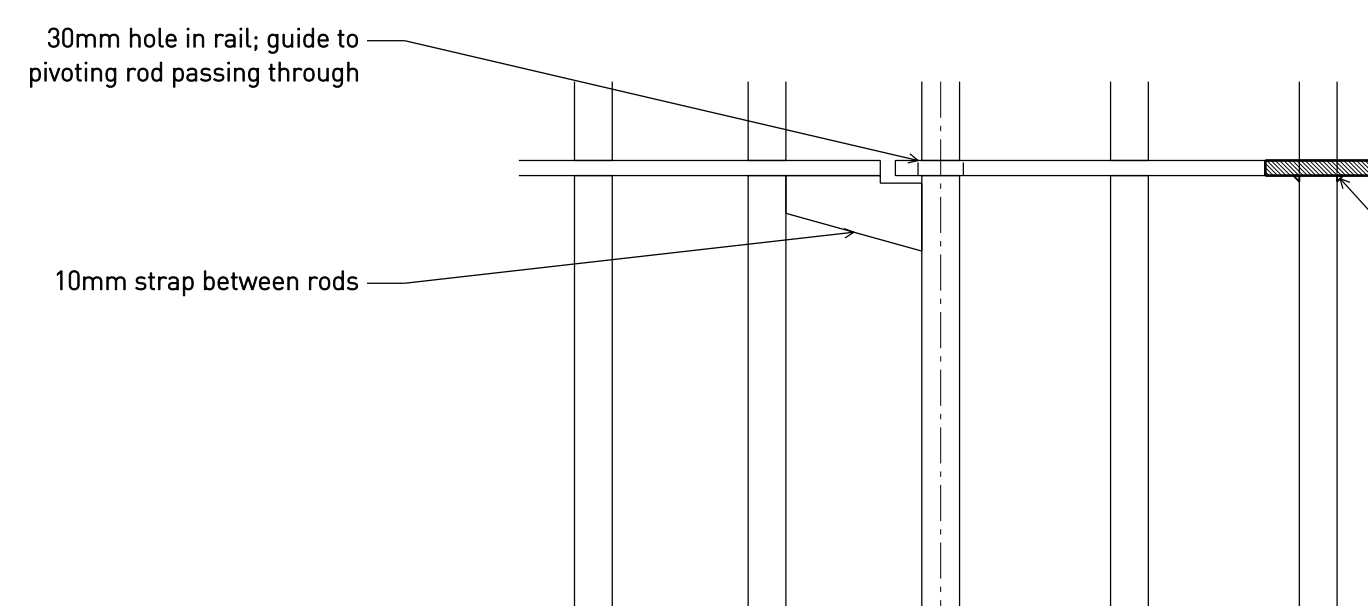
L Gate Hinge Plan Detail - Low 1:5 (As detail J unless otherwise noted)



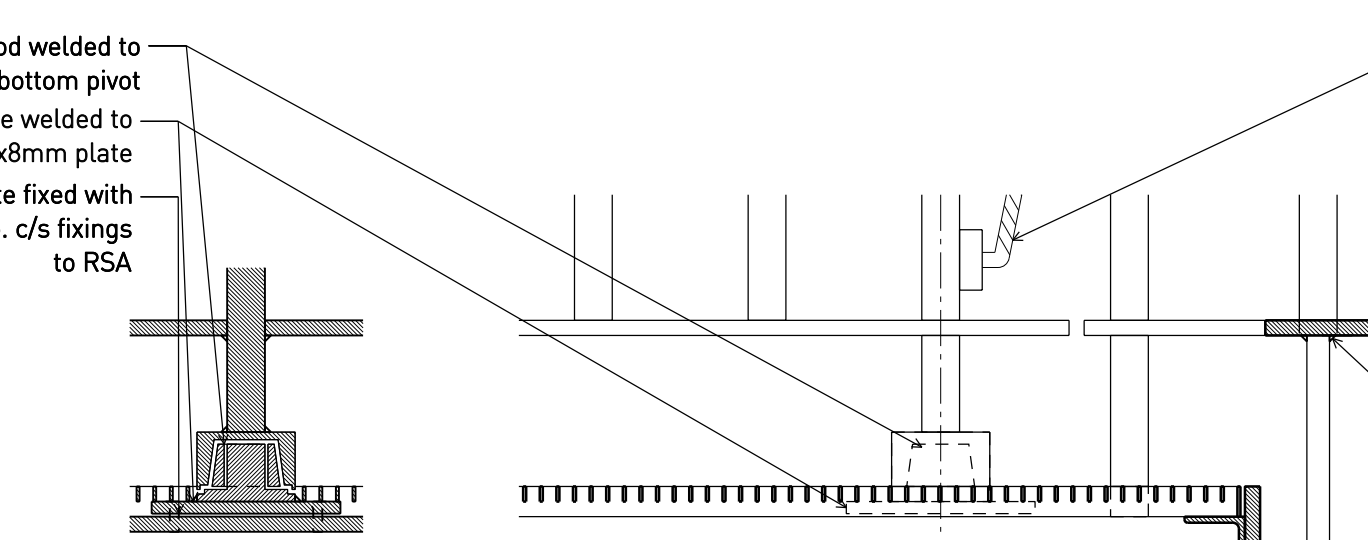
M Gate Jamb Elevation Detail - High 1:5



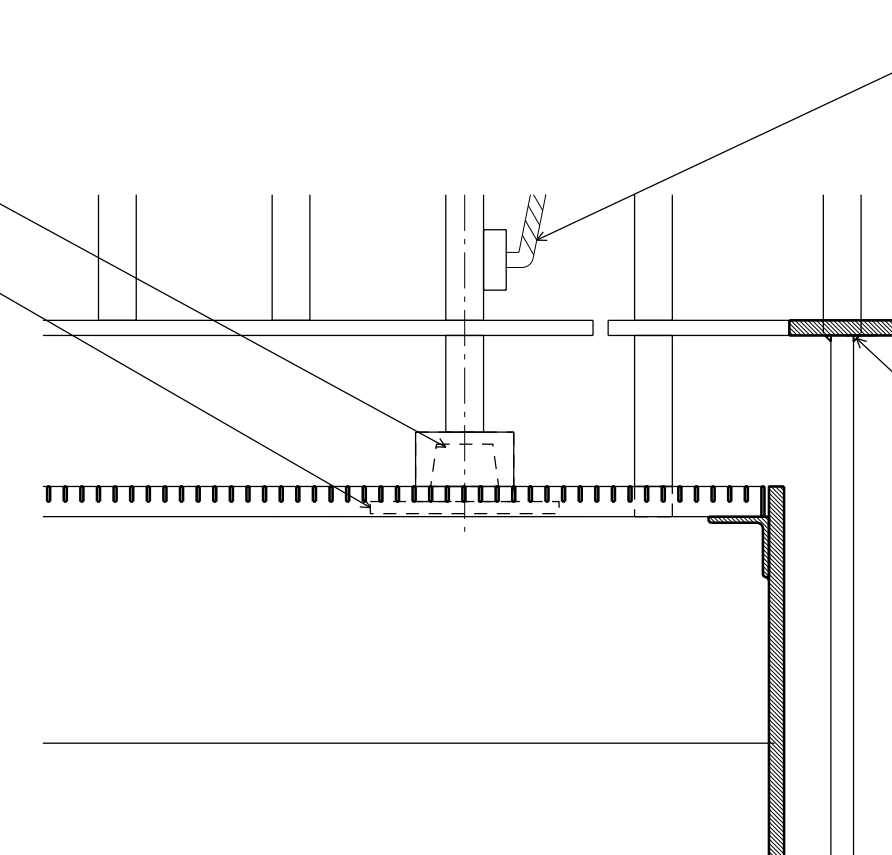
N Gate Hinge Elevation Detail - High 1:5



Q Gate Hinge Elevation Detail - Mid 1:5



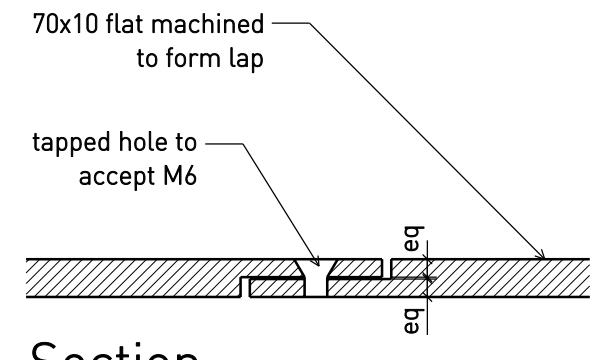
V Gate Pivot Detail 1:5



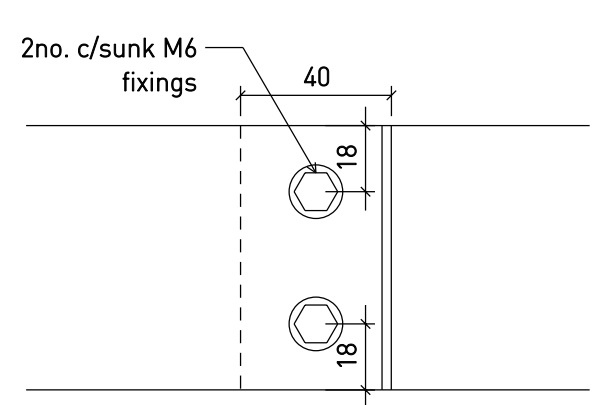
S Gate Hinge Elevation Detail - Low 1:5

R Gate Jamb Elevation Detail - Low 1:5

NOTES:
Specification of railings: L30/268

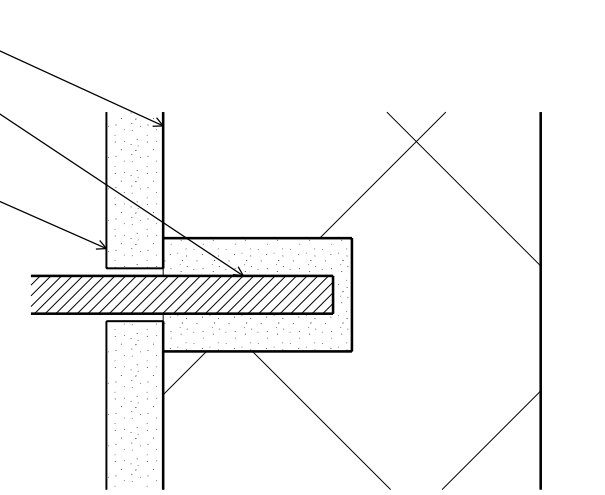


Section



Plan

T Railing Connection Detail - Typical 1:2 (Positions to be agreed with architect)



U Railing to Wall Section Detail 1:2

C	27.11.17	Issued for CONSTRUCTION; revised as clouded
B	18.08.16	Issued for CONSTRUCTION
A	7.10.15	Issued for TENDER
*	28.08.15	Billing issue
Rev	Date	Status/Notes

Tim Ronalds Architects

108 Weston Street . London SE1 3QB
tel: 020 7490 7704
office@timronalds.co.uk

Royal Central School of Speech & Drama - Phase 5

Buckland Crescent, Swiss Cottage

External Works- Details

Sheet 3- Railing

Scale (at A1)	Drawn	Checked
1:2, 1:5	GK	AG

CSD 263 C