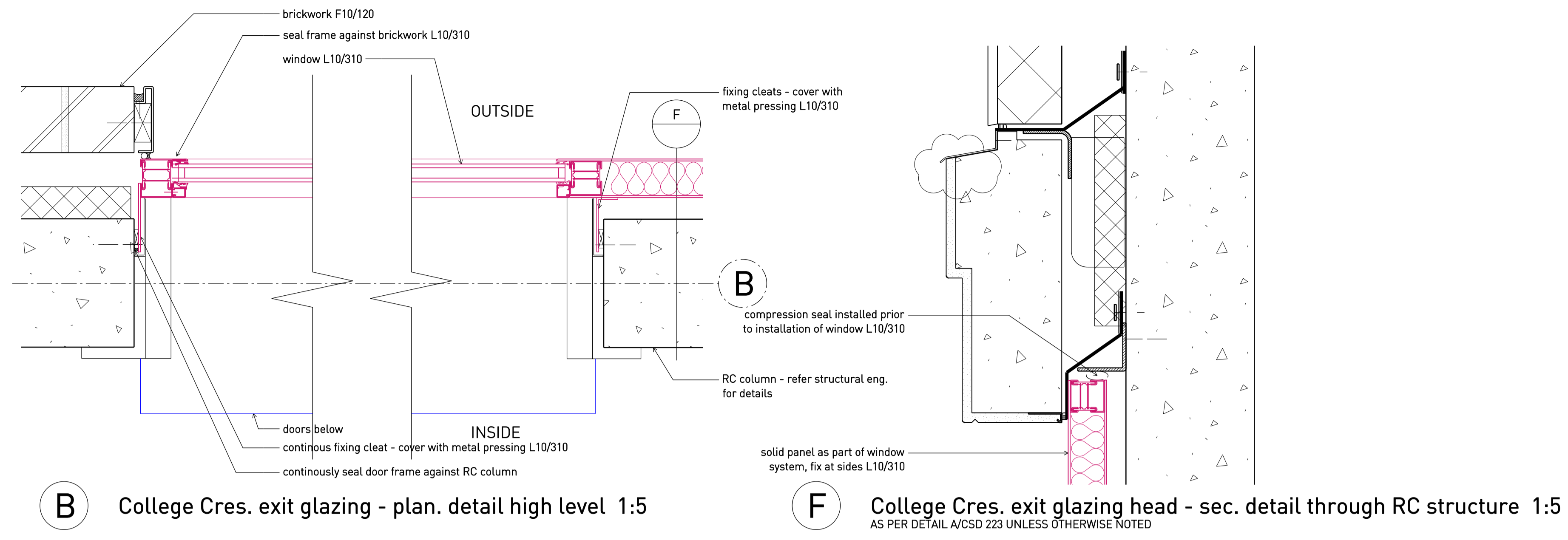
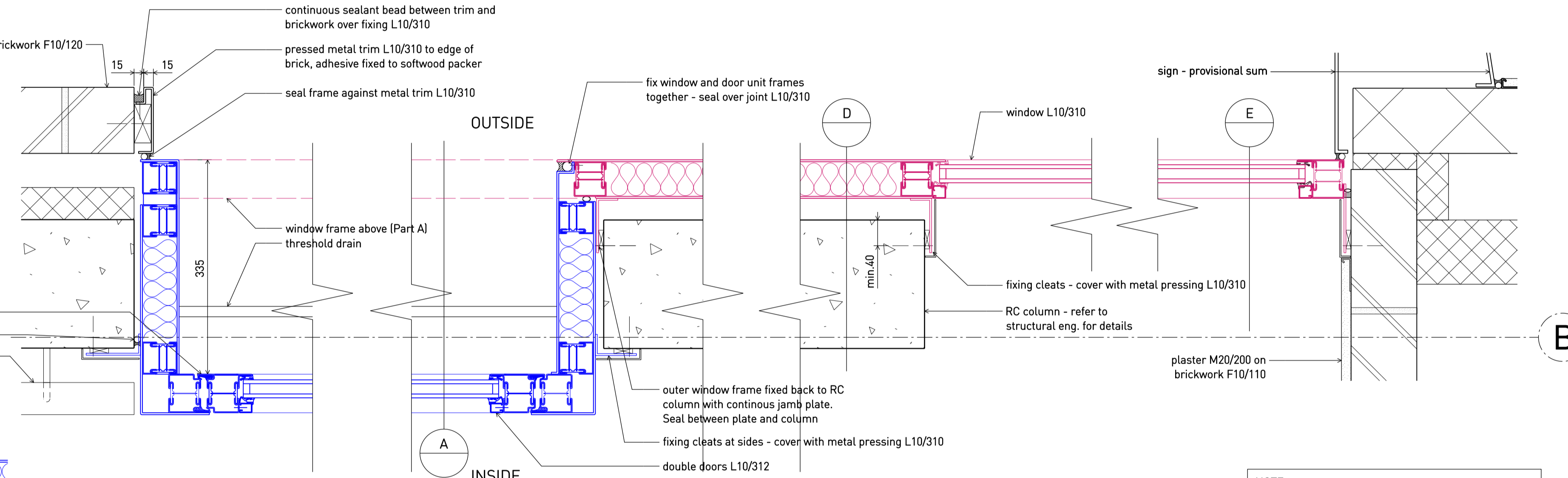


A College Cres. exit glazing - sec. detail through door 1:5 at A1

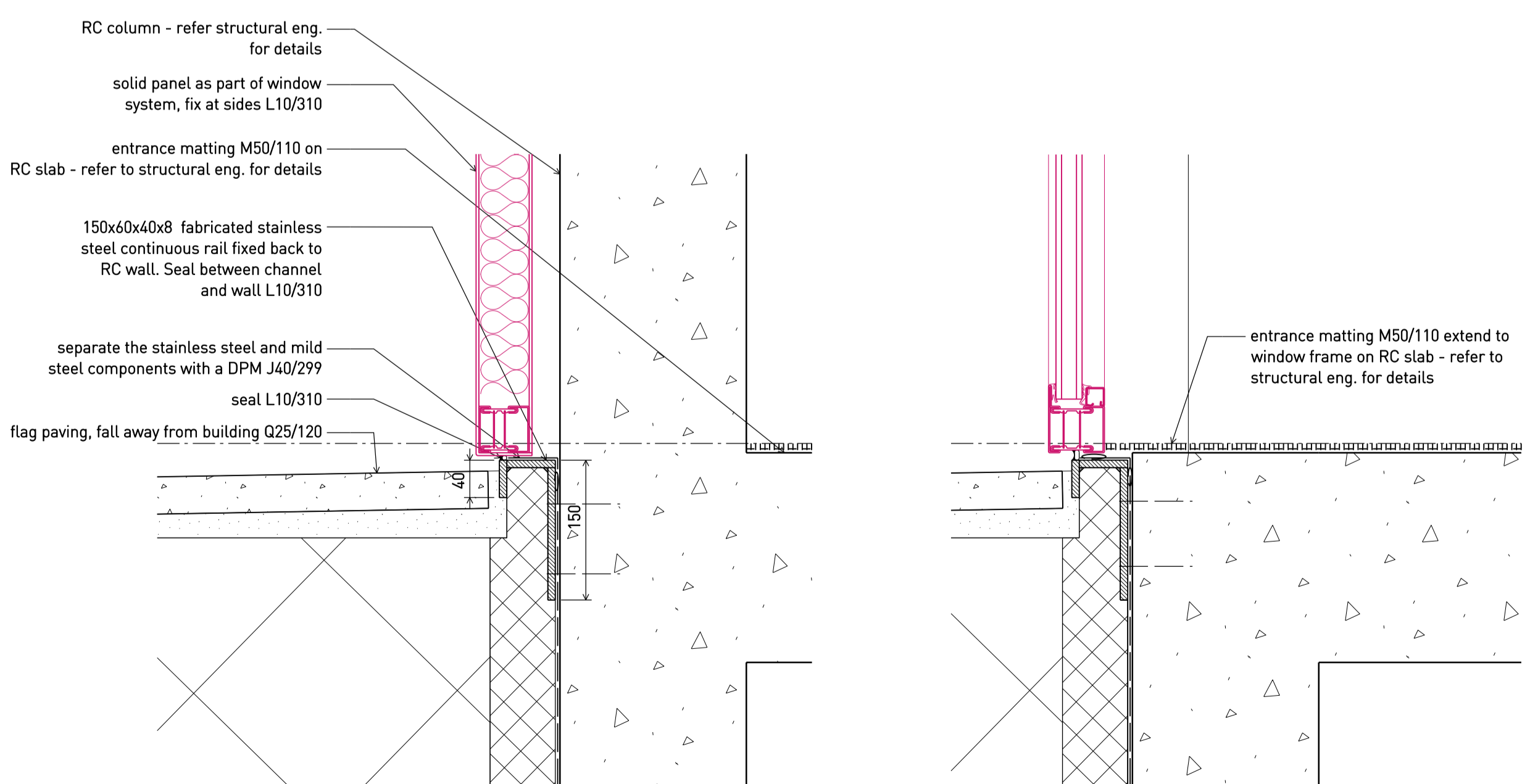


B College Cres. exit glazing - plan. detail high level 1:5

F College Cres. exit glazing head - sec. detail through RC structure 1:5 AS PER DETAIL A/CSD 223 UNLESS OTHERWISE NOTED



C College Cres. exit glazing - plan. detail through door 1:5



D College Cres. exit glazing cill - sec. detail through RC structure 1:5

E College Cres. exit glazing cill - sec. detail 1:5 AS PER DETAIL D/CSD 223 UNLESS OTHERWISE NOTED

H Threshold drain plan detail 1:20

G College Cres. exit glazing cill - sec. detail 1:5 AS PER DETAIL D/CSD 223 UNLESS OTHERWISE NOTED

NOTE:
All window and door framing and associated panelling forming part of the College Crescent entrance glazing unit to be mild steel
This drawing is to be read in COLOUR. Pink and blue lines have been used to denote the separate fabricated components of the finished assembly

D	27.11.17	Issued for CONSTRUCTION; revised as clouded
C	11.07.16	Issued for CONSTRUCTION; revised as clouded
B	03.06.15	Issued for revised TENDER; revised as clouded
A	2.10.15	Issued for TENDER
Rev	27.08.15	Billing issue
Date		Status/Notes

Tim Ronalds Architects
108 Weston Street . London SE1 3QB
tel: 020 7490 7704
office@timronalds.co.uk

Royal Central School of Speech & Drama - Phase 5
Buckland Crescent, Swiss Cottage
College Cres. entrance glazing details

Scale (at A1)	Drawn	Checked
1:5	MW	AG

CSD 223 D