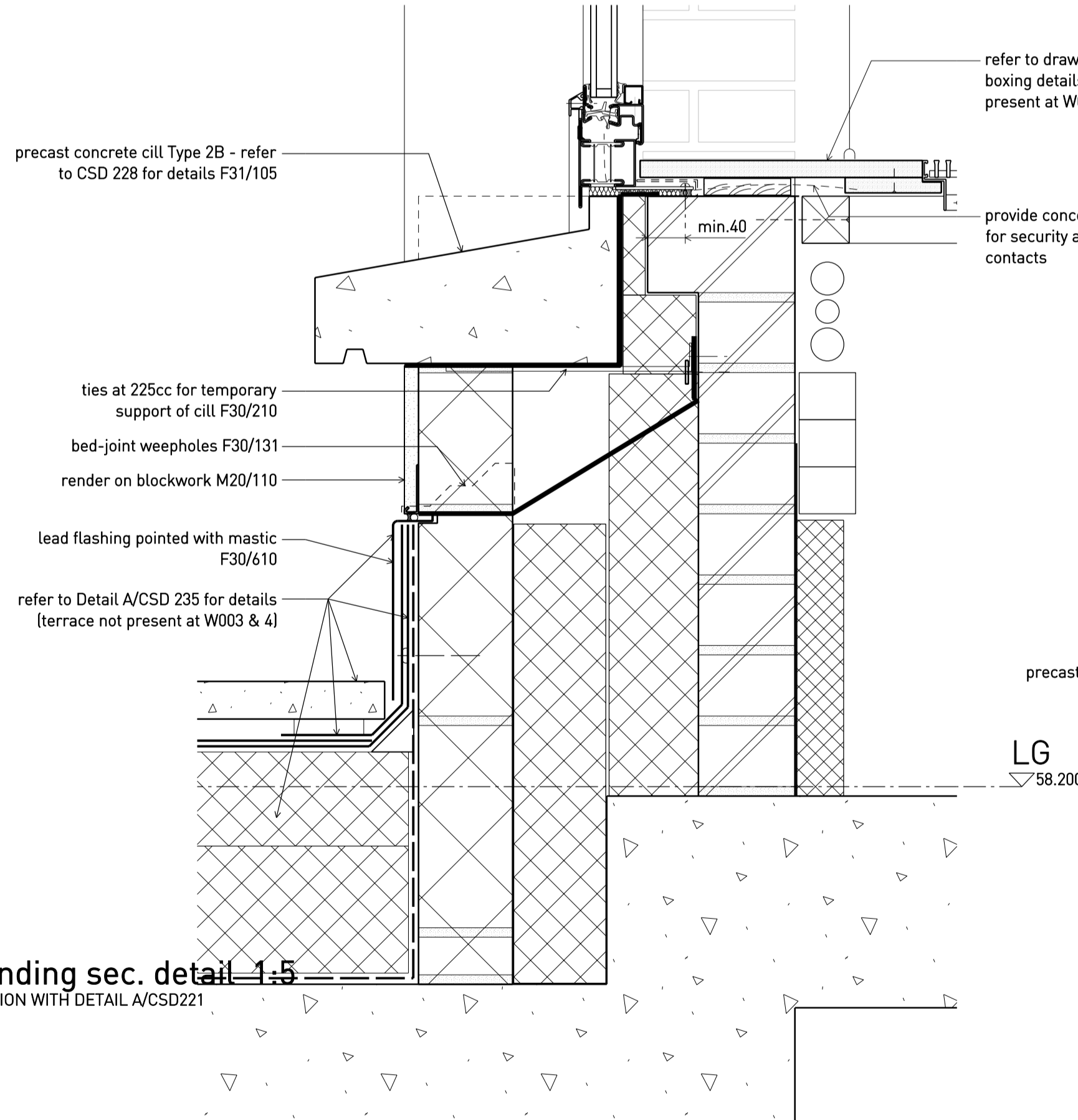
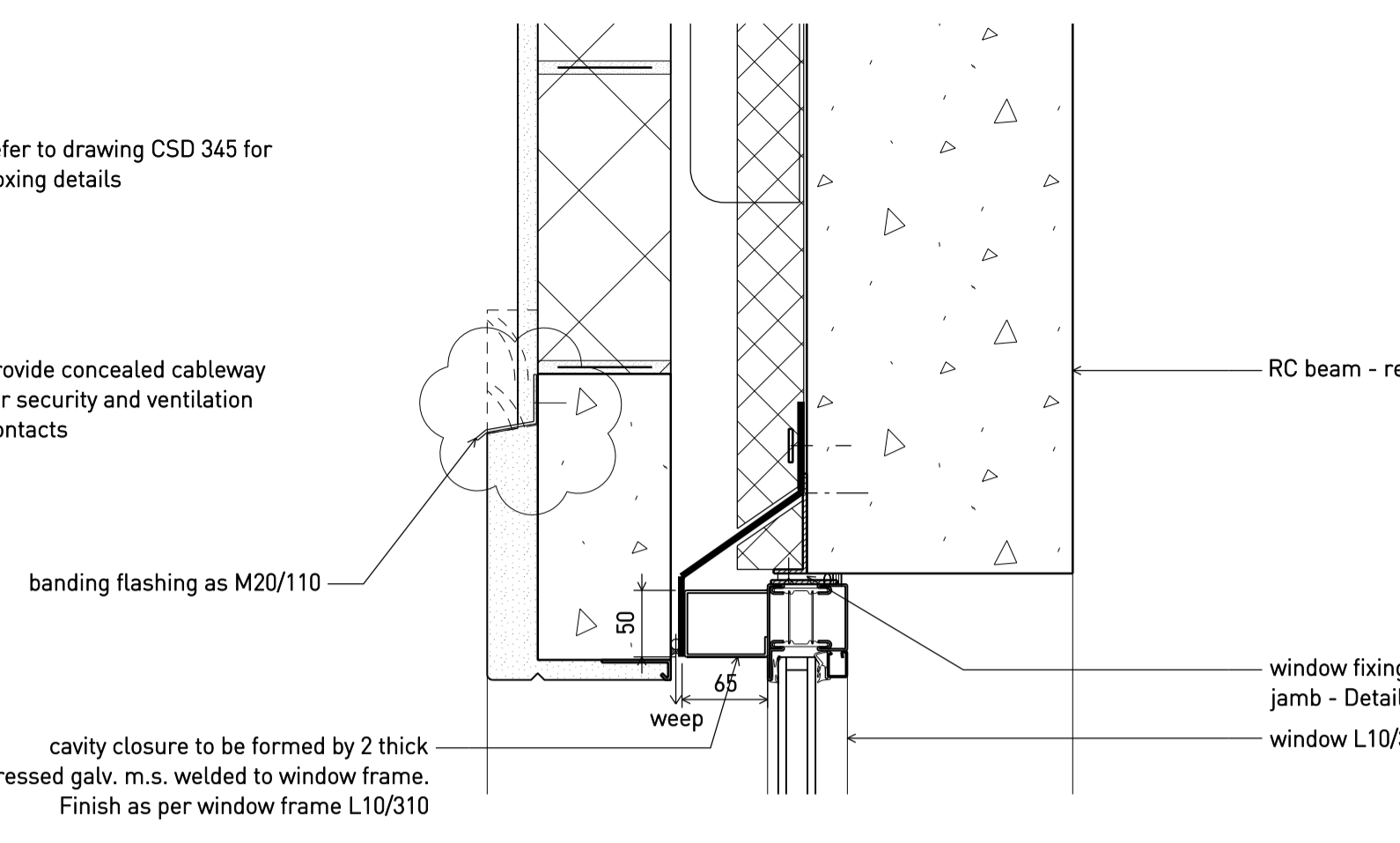


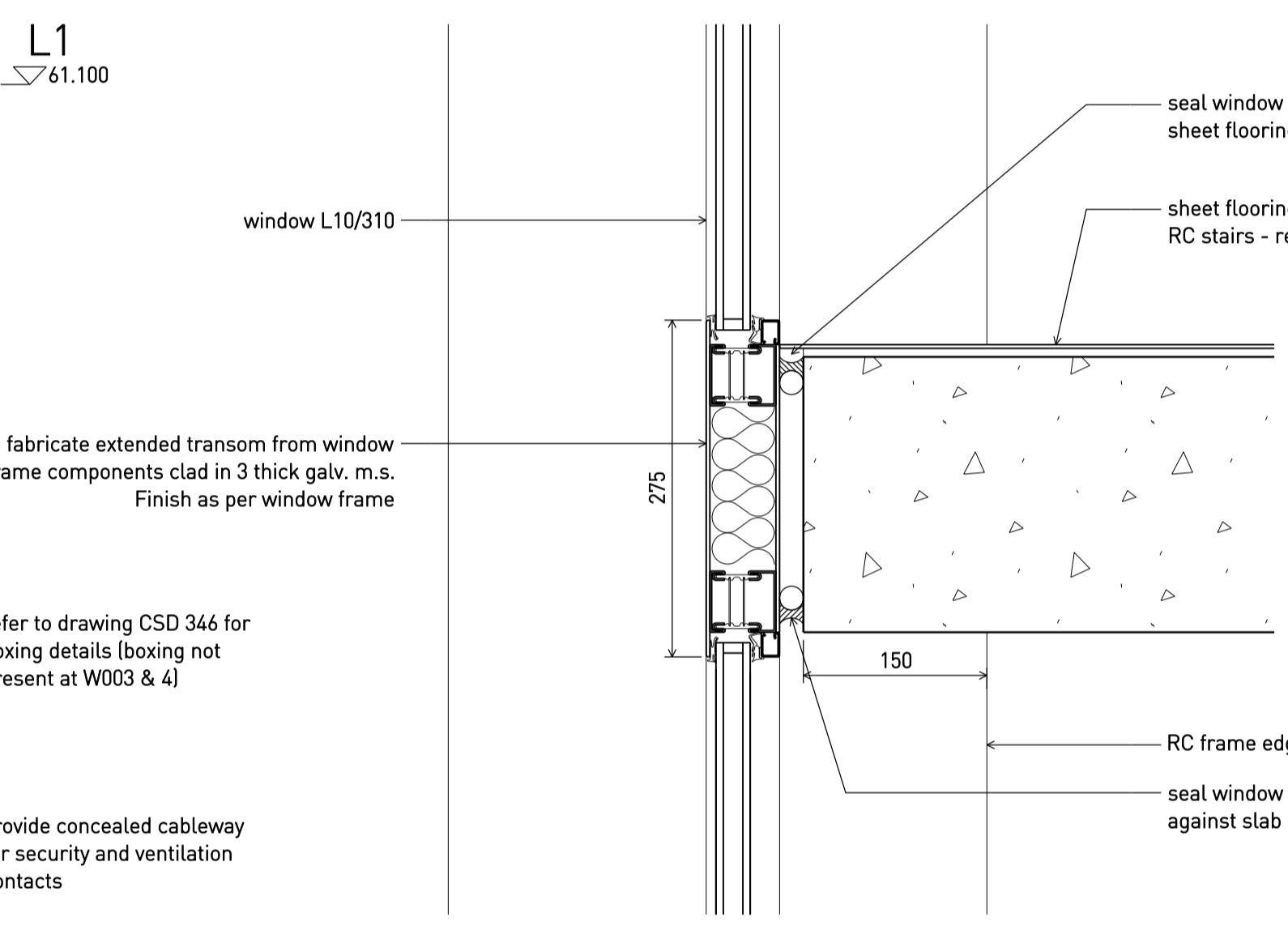
A Typical window sec. detail - L1 1:5
AS PER CSD 221, DETAIL A UNLESS OTHERWISE NOTED



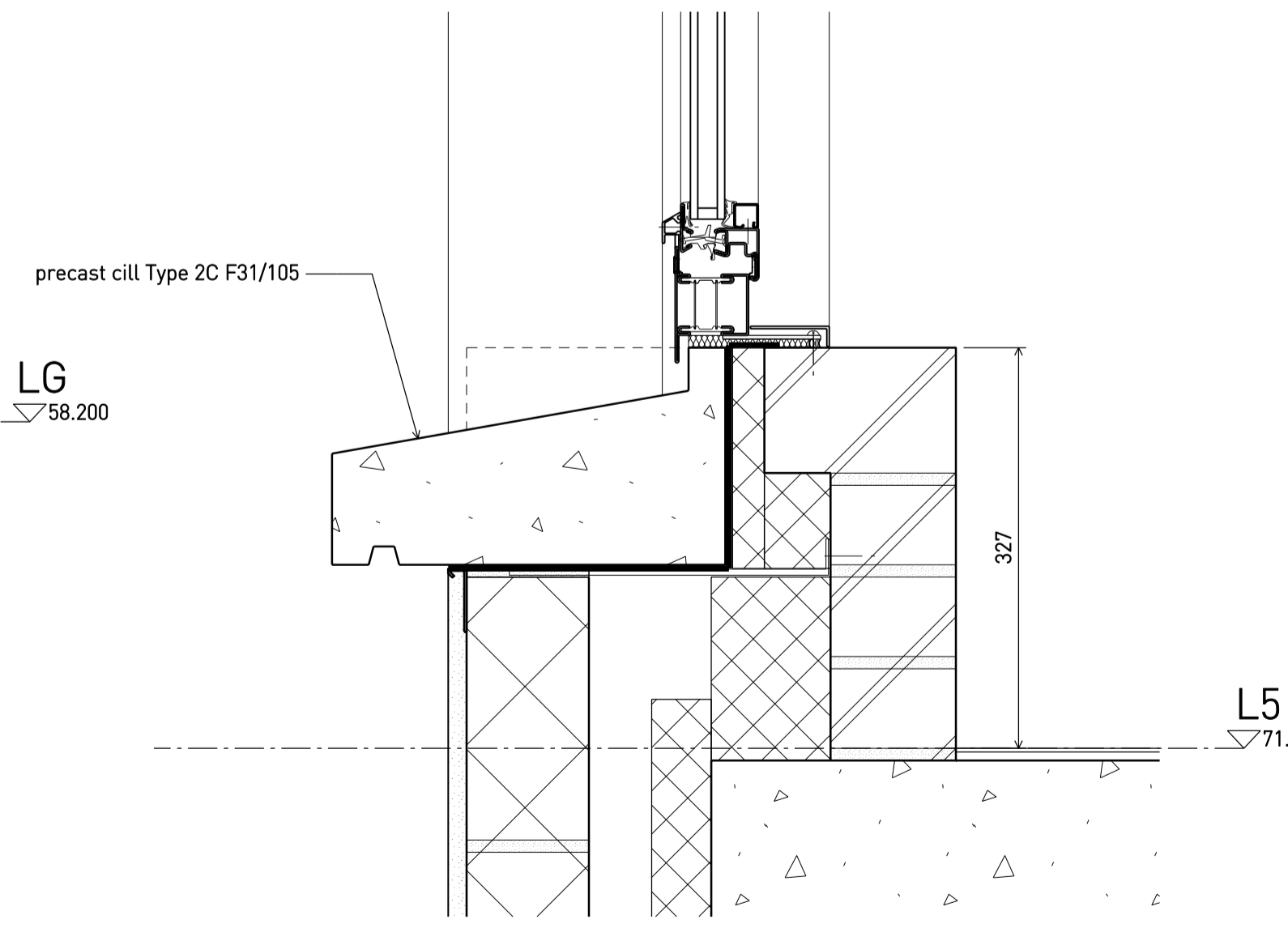
B Typical window sec. detail - LG 1:5
AS PER CSD 221, DETAIL A UNLESS OTHERWISE NOTED



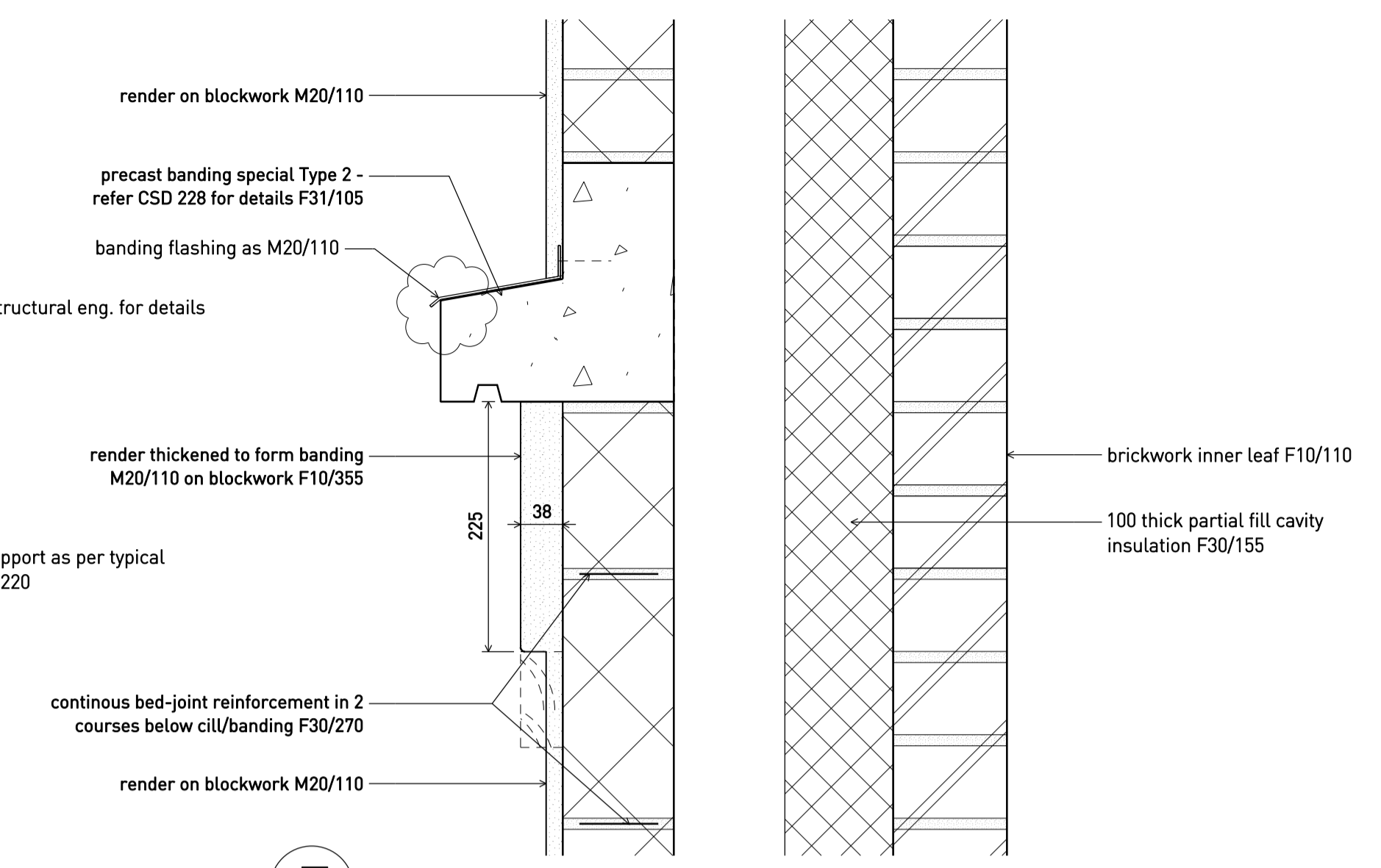
C Stair window head sec. detail 1:5
AS PER CSD 221, DETAIL E UNLESS OTHERWISE NOTED



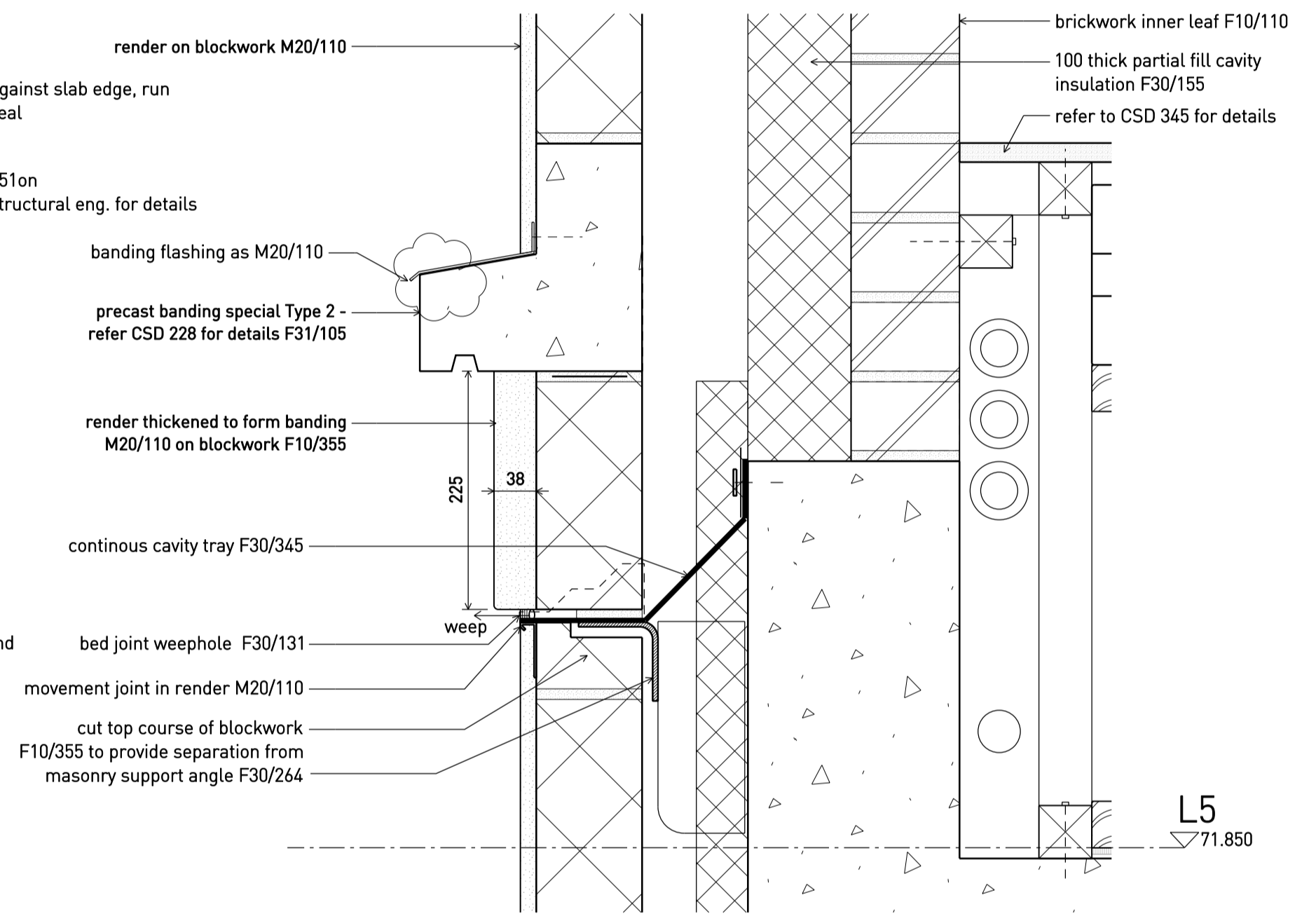
D Stair window transom sec. detail 1:5



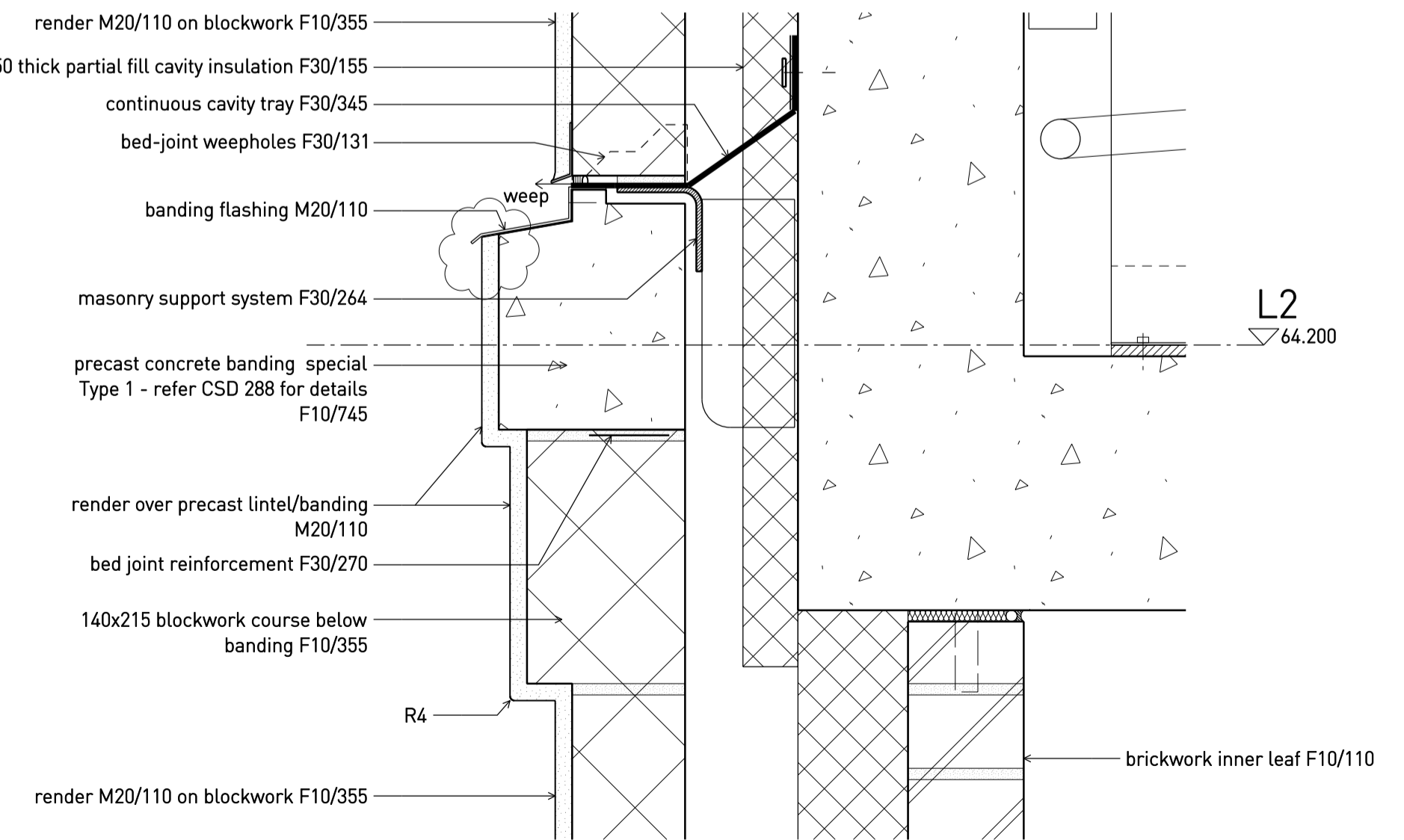
E Changing room window cill sec. detail 1:5
AS PER CSD 221, DETAIL D UNLESS OTHERWISE NOTED



F L6 wall banding sec. detail 1:5
READ IN CONJUNCTION WITH DETAIL D/CSD221



G L5 wall banding sec. detail 1:5
READ IN CONJUNCTION WITH DETAIL C/CSD221



H

C	27.11.17	Issued for CONSTRUCTION; revised as clouded
B	17.08.14	Issued for CONSTRUCTION
A	2.10.15	Issued for TENDER
*	26.08.15	Billing issue
Rev	Date	Status/Notes

Tim Ronalds Architects
108 Weston Street . London SE1 3QB
tel: 020 7490 7704
office@timronalds.co.uk

Royal Central School of
Speech & Drama - Phase 5
Buckland Crescent, Swiss Cottage
North facade ext. window &
wall banding - sec. details

Scale (at A1)	Drawn	Checked
1:5	MW	AG

CSD 222 C