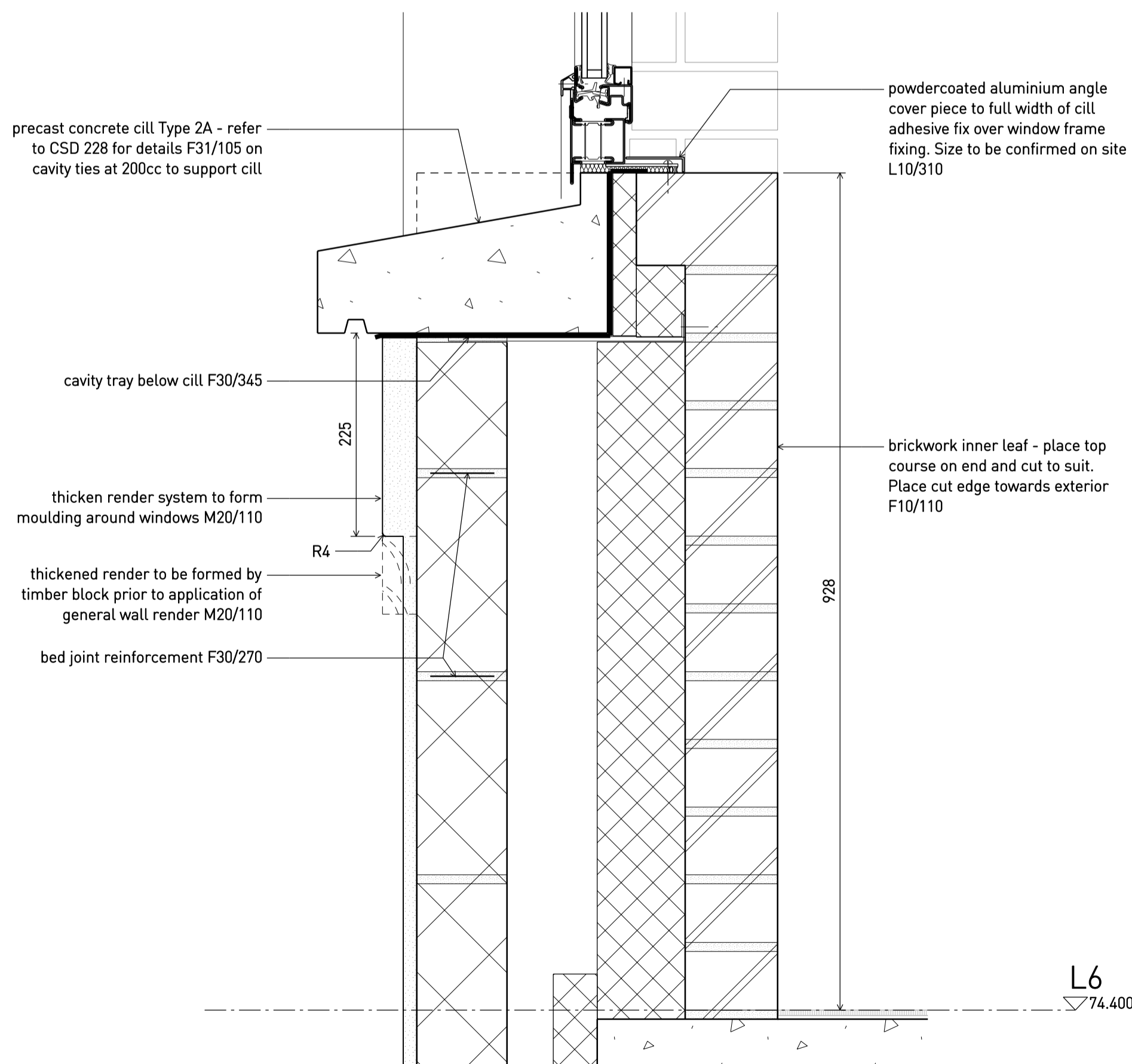
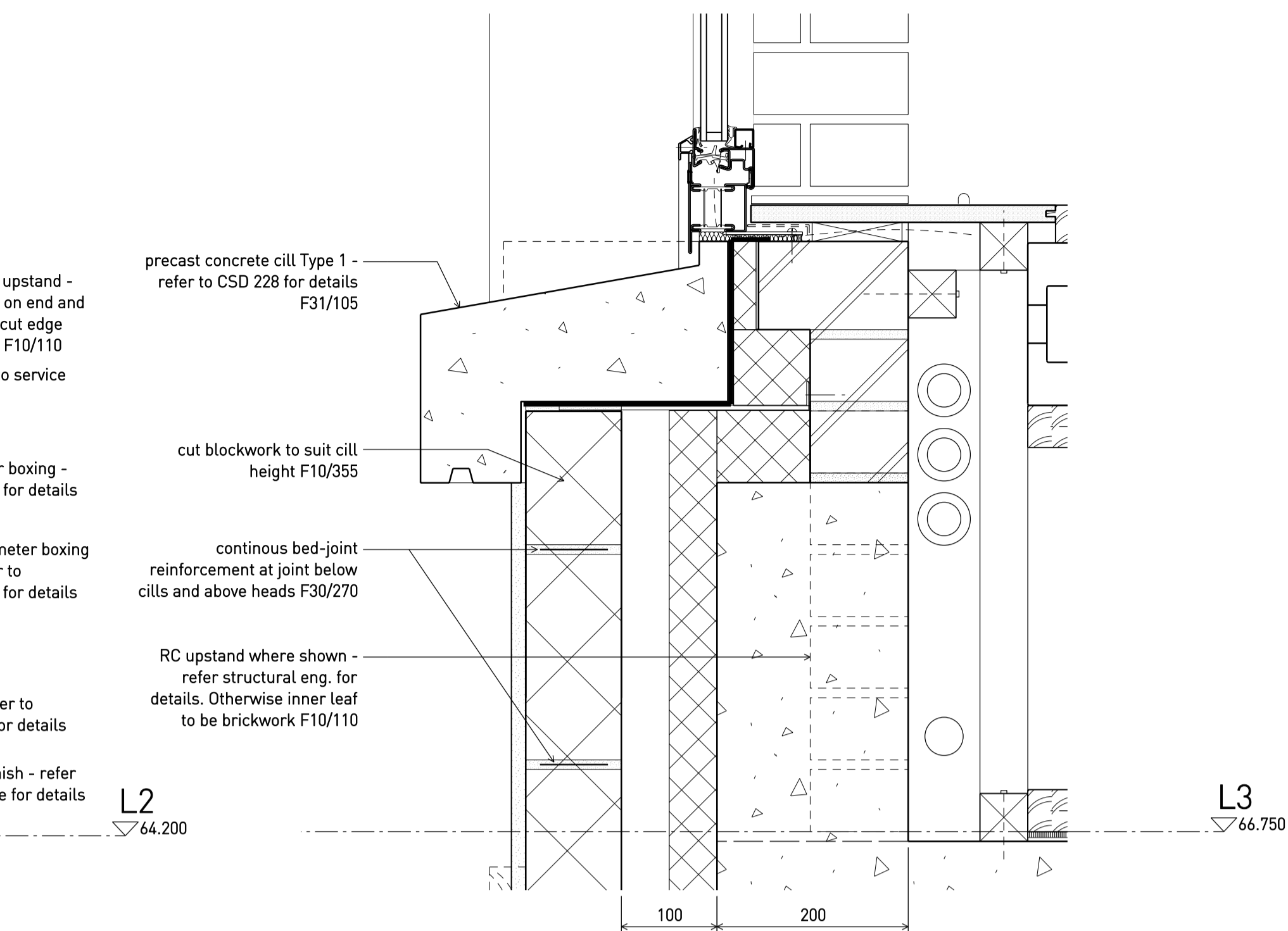


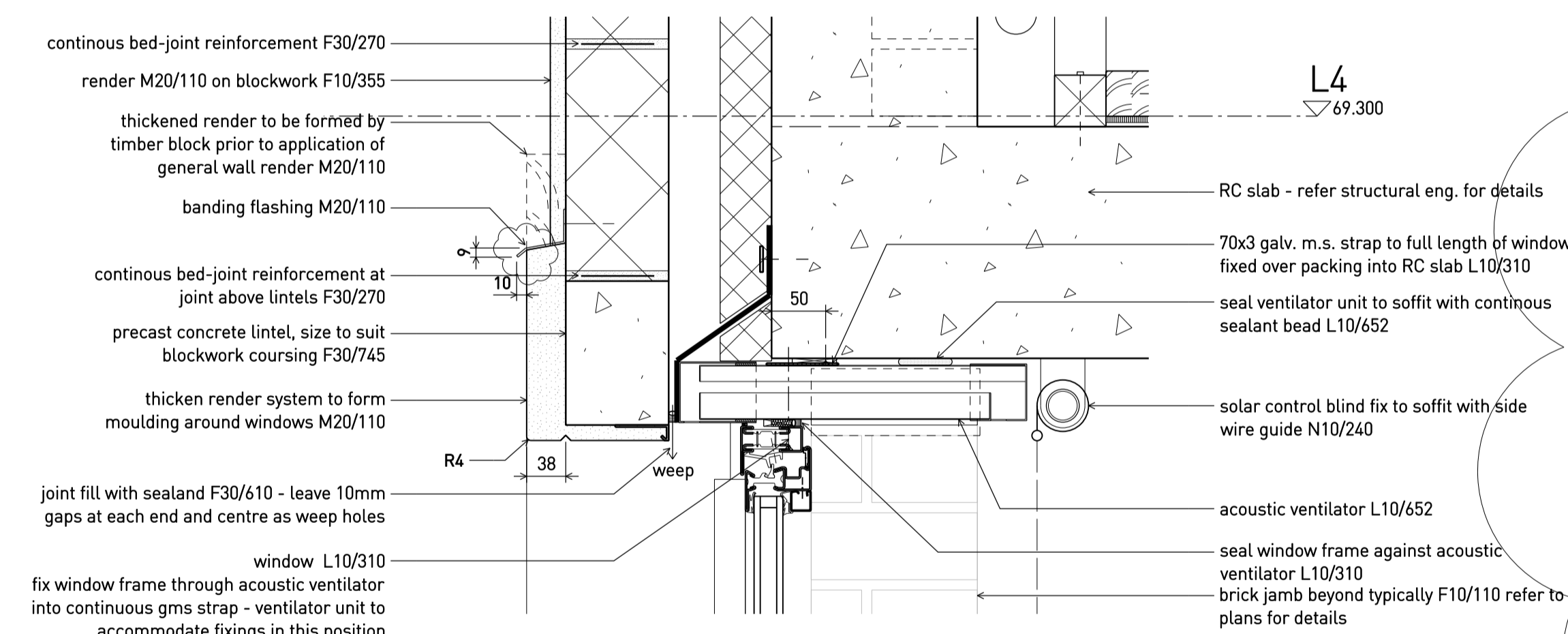
A Typical window sec. detail - L2 1:5



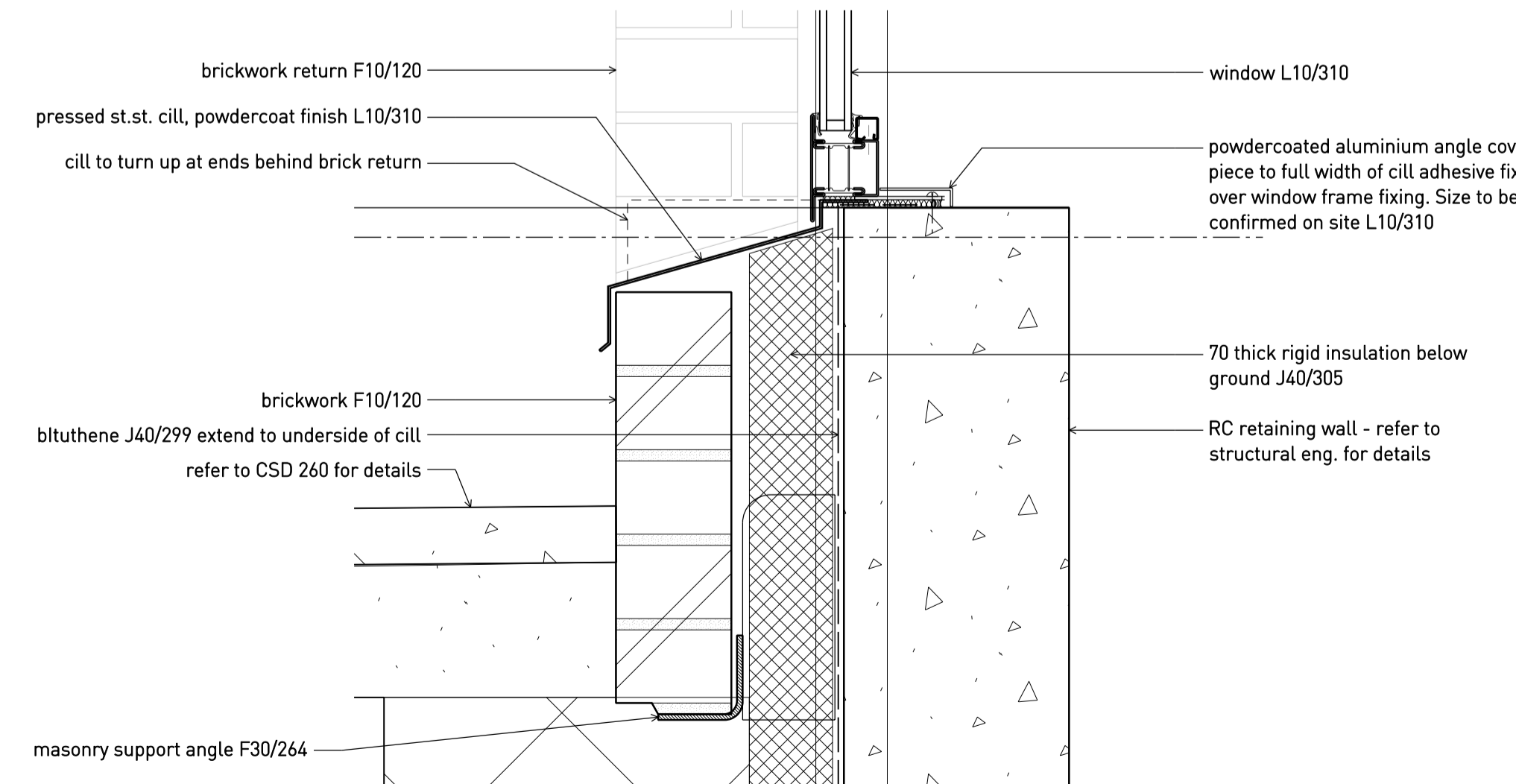
D Typical window cill sec. detail - L6 1:5
AS PER CSD 221, DETAIL A UNLESS OTHERWISE NOTED



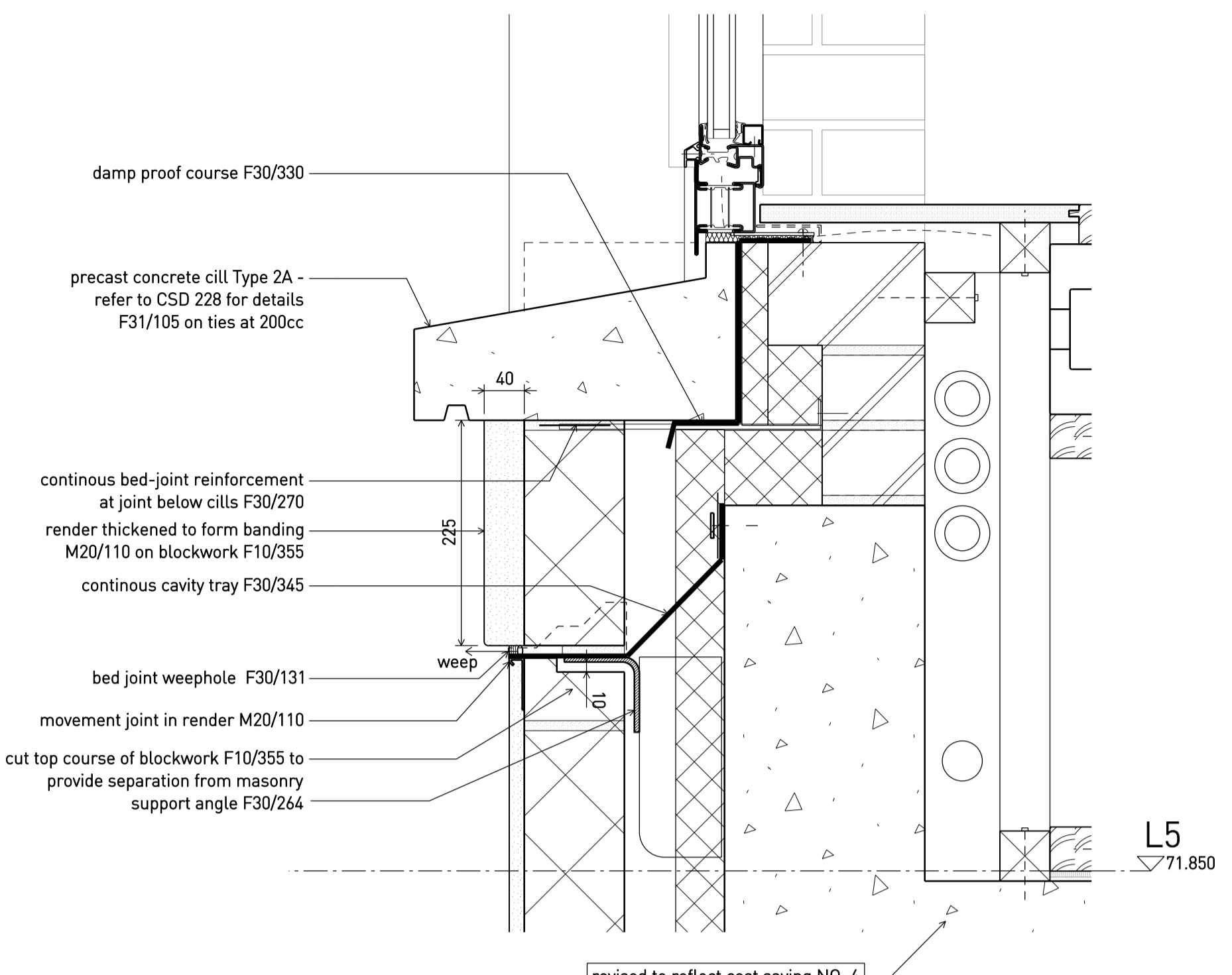
B Typical window cill sec. detail - L3 & L4 1:5
AS PER CSD 221, DETAIL A UNLESS OTHERWISE NOTED



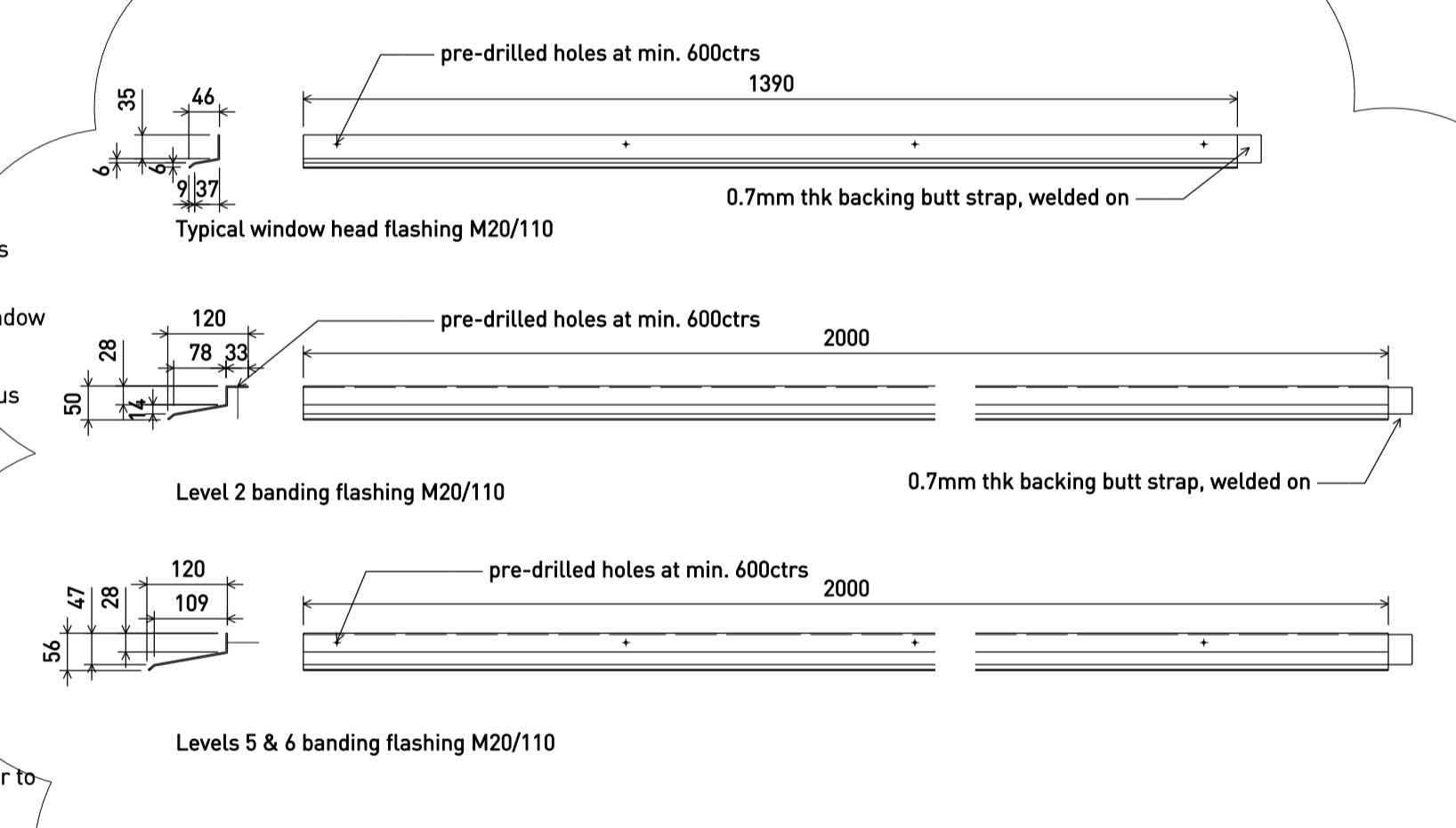
E Typical window sec. detail - L3, L4 & L5 (L1 & L6 similar) 1:5



F College Cres. street level window cill - sec. detail 1:5



C Typical window cill sec. detail - L5 1:5
AS PER CSD 221, DETAIL A UNLESS OTHERWISE NOTED



G Flashing components 1:10

Rev	Date	Status/Notes
D	27.11.17	Issued for CONSTRUCTION; revised as clouded
C	17.08.16	Issued for CONSTRUCTION
B	2.10.15	Issued for TENDER
A	04.09.15	Billing issue 4
*	07.08.15	Billing issue 1

Tim Ronalds Architects
108 Weston Street . London SE1 3QB
tel: 020 7490 7704
office@timronalds.co.uk

Royal Central School of
Speech & Drama - Phase 5
Buckland Crescent, Swiss Cottage

Typical ext. window -
section details

Scale (at A1)	Drawn	Checked
1:5	MW	AG

CSD 221 D