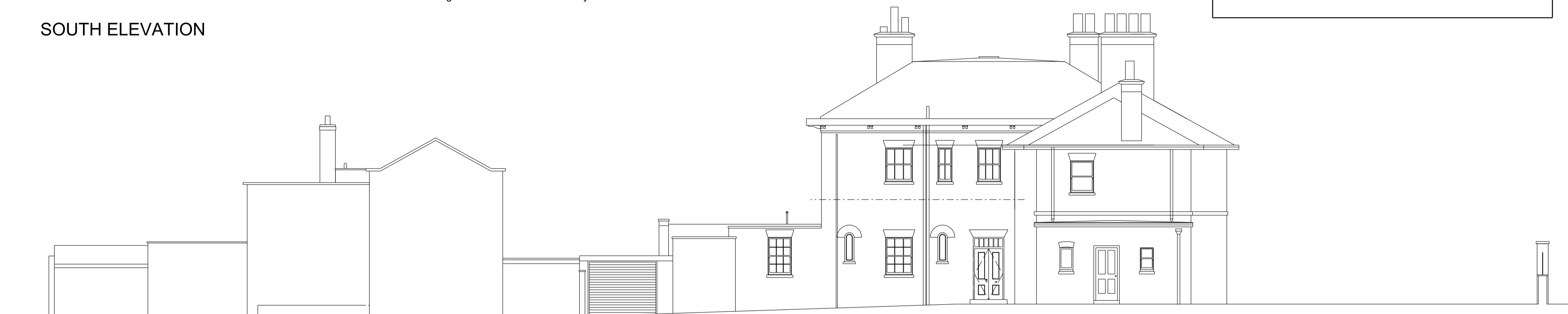


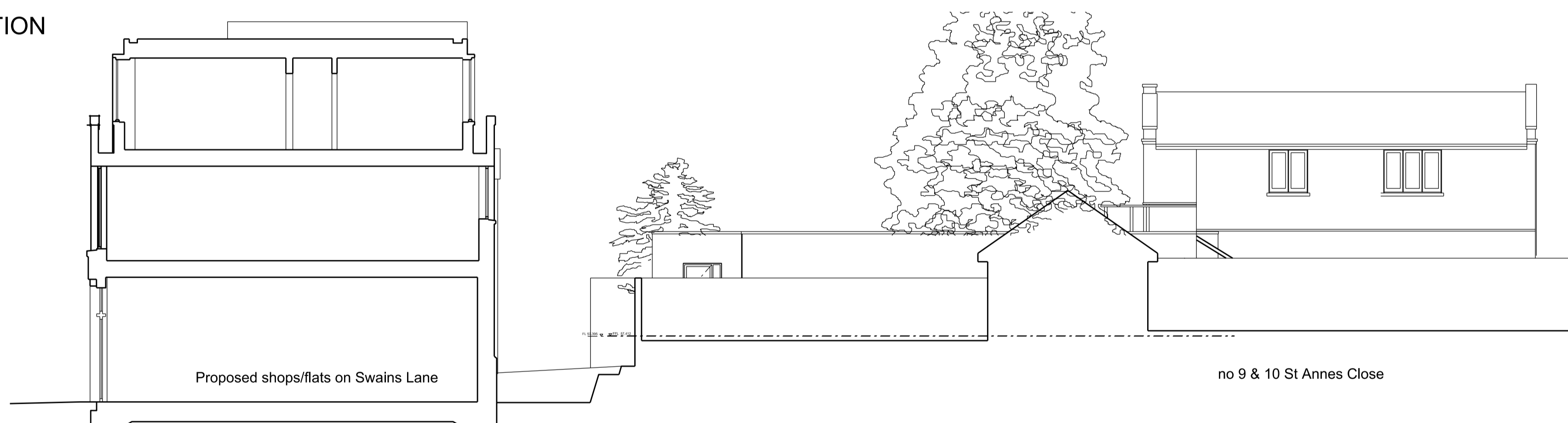


Foreground trees omitted for clarity

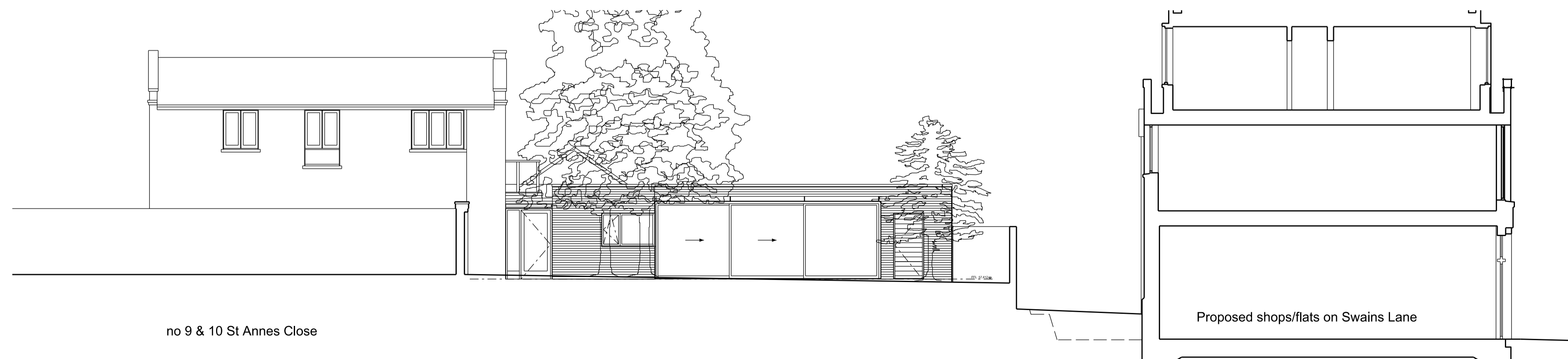
SOUTH ELEVATION



NORTH ELEVATION



EAST ELEVATION



WEST ELEVATION

PROPOSED MATERIALS

- WALLS - Facing brick to match existing houses on site.
- WINDOWS /SLIDING DOORS - Colour coated aluminium framed d.g. units. Colour TBA.
- DOORS - Solid oak vertically boarded. Finish light oak Cetol system.
- ROOF - Sedum planted roof with minimum falls to internal gutters and downpipes.
- FASCIAS - Colour coated aluminium trim to cap brickwork.



PLANNING APPLICATION

DWG NO	BBH.12.PL04B
SCALE	1:100 @ A1
DATE	DEC 2017
DRN	
CHKD	
REVISIONS	B 08.10.17 Elevations updated
PROJECT	A 08.01.13 Tree locations corrected
TITLE	NEW BUNGALOW AT BROOKFIELD HOUSE HIGHGATE
	PROPOSED ELEVATIONS



ARCHITECTS  
INTERIOR  
+ URBAN  
DESIGNERS  
DAVID RICHMOND  
AND PARTNERS LTD  
The Studio  
1 Southwood  
Lawn Road  
London N6 5SD  
T 07803 084 788  
E david@dr-p.co.uk  
THIS DRAWING  
IS COPYRIGHT  
ALL DIMENSIONS TO  
BE CHECKED ON SITE  
DO NOT SCALE